

GRANT COUNTY CERTIFIED U.S. PUBLIC LAND SURVEY MONUMENT RECORD

GRANT COUNTY COORDINATES (WISCRS)
BASIS OF BEARINGS AND ORIENTATION: NAD 83 (2011)
MEASUREMENTS BASED UPON GPS OBSERVATION

NORTHING:

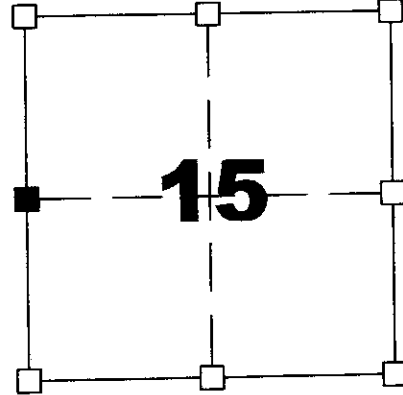
EASTING:

INSTRUCTIONS: THIS RECORD SHALL SHOW THE LOCATION OF THE CORNER AND SHALL INCLUDE ALL OF THE FOLLOWING ELEMENTS (A-1)

(A) IDENTIFY THE CORNER BY REFERENCE TO THE U.S. PUBLIC LAND SURVEY SYSTEM

WEST QUARTER CORNER SECTION 15, T8N, R2W

TOWN OF WATTERSTOWN T8N R2W



SECTION 15, TOWN 8 NORTH, RANGE 2 WEST

TOWN OF WATTERSTOWN, GRANT COUNTY, WISCONSIN

- ⊕ = CORNER MONUMENT RECOVERED - 3/4" DIA REBAR MONUMENT FOUND
- WITNESSES TO CORNER LOCATION
- 1) SEAN M. WALSH
- 2) NOLAN WALSH

(B) A DESCRIPTION OF ANY RECORD EVIDENCE, MONUMENT EVIDENCE, OCCUPATIONAL EVIDENCE, TESTIMONIAL EVIDENCE OR ANY OTHER MATERIAL EVIDENCE CONSIDERED BY THE PROFESSIONAL LAND SURVEYOR AND WHETHER THE MONUMENT WAS FOUND OR PLACED.

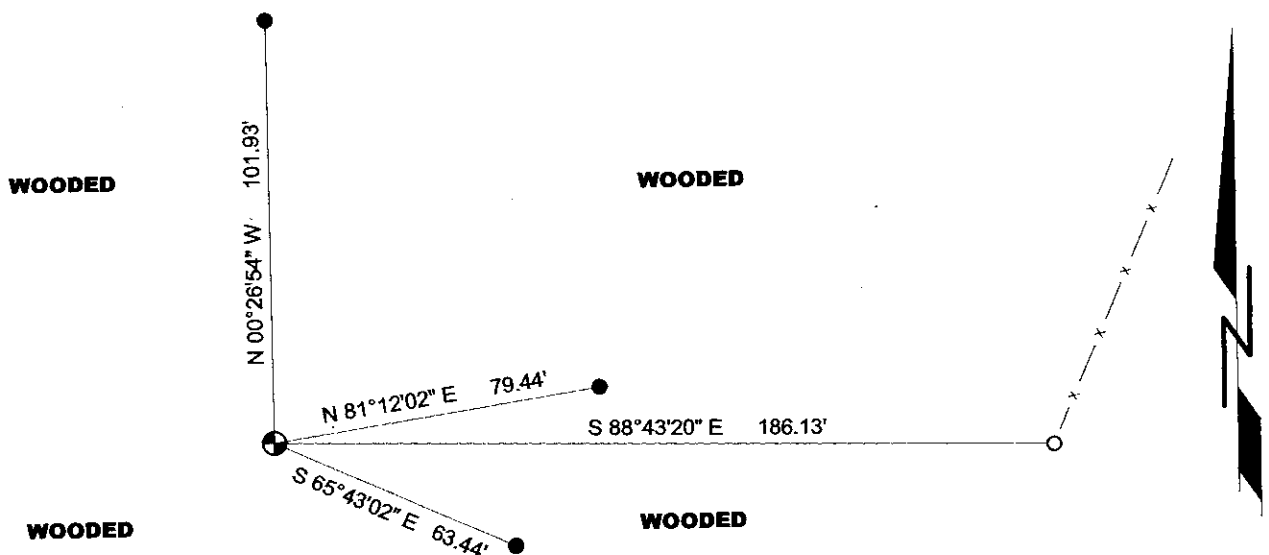
IN DECEMBER 2019, IN CONJUNCTION WITH A PRIVATE SURVEY FOR MIKE BARTELS, I FOUND A 3/4 INCH MONUMENT AT THIS LOCATION. PREVIOUS TIES WERE DISTURBED OR MISSING. I LOCATED A NEARBY DNR REBAR FOR VERIFICATION AND I SET THE NEW TIES TO PERPETUATE AS SHOWN BELOW.

(C) IN THE PLAN VIEW DRAWING BELOW, PROVIDE REFERENCE TIES TO AT LEAST 4 WITNESS MONUMENTS. (WITNESS MONUMENTS SHALL BE MADE OF CONCRETE, NATURAL STONE, IRON OR OTHER EQUALLY DURABLE MATERIAL) DESCRIBE WITNESS MONUMENTS

DRAWING NOT TO SCALE

LEGEND

- ⊕ Found 3/4" dia rebar
- 3/4" dia x 18" iron rebar set as tie
- 3/4" rebar found
- x - Existing fence line



ROMPORTL CORNER No. _____

GRANT COUNTY INDEX CORNER No. 82057

GRANT COUNTY
CERTIFIED U.S. PUBLIC LAND SURVEY MONUMENT RECORD

RECOVERY PROCEDURES:

(E) A DESCRIPTION OF ANY RECORD EVIDENCE, MONUMENT EVIDENCE, OCCUPATIONAL EVIDENCE, TESTIMONIAL EVIDENCE OR ANY OTHER MATERIAL EVIDENCE CONSIDERED BY THE SURVEYOR, AND WHETHER THE MONUMENT WAS FOUND OR PLACED;

*IN DECEMBER 2019, IN CONJUNCTION WITH A PRIVATE SURVEY FOR MIKE BARTELS, I FOUND A 3/4" REBAR MONUMENT AT THIS LOCATION. PREVIOUS TIES WERE DISTURBED OR MISSING. I LOCATED A DNR REBAR FOR VERIFICATION AND I SET THE NEW TIES TO PERPETUATE AS SHOWN ON THE PREVIOUS PAGE.
THIS CORNER WAS LAST DOCUMENTED BY MYSELF IN 1995.*

(F) WHETHER THE CORNER WAS RESTORED THROUGH ACCEPTANCE OF AN OBLITERATED EVIDENCE LOCATION OR A FOUND PERPETUATED LOCATION; A FOUND PERPETUATED LOCATION

(G) WHETHER THE CORNER WAS REESTABLISHED THROUGH LOST-CORNER PROPORTIONATE METHODS;
IF SO, SHOW THE DIRECTIONS AND DISTANCES TO OTHER PUBLIC LAND SURVEY CORNERS WHICH WERE USED AS EVIDENCE OR USED FOR PROPORTIONING IN DETERMINING THE CORNER LOCATION;

N/A

7.08 (3) (h)

N/A

SURVEYOR'S CERTIFICATE: CHAPTER 7.08 (3) (I)

THE UNDERSIGNED HEREBY CERTIFIES THAT THE U.S. PUBLIC LAND SURVEY MONUMENT RECORD SHOWN WAS DETERMINED BY THEM OR UNDER THEIR DIRECTION AND IS CORRECT AND COMPLETE TO THE BEST OF THEIR KNOWLEDGE AND BELIEF.



Sean M. Walsh 1/13/2020

DATE CERTIFIED

RECEIVED

COPY

APR 25 1995

GOVERNMENT CORNER RECORD

WEST 1/4 CORNER, SECTION 15, TOWNSHIP 8 NORTH, RANGE 2 EAST - WEST,

TOWN, CITY OR VILLAGE OF WATTERSTOWN

TYPE OF MONUMENT: 3/4" IRON ROD ELEVATION - M.S.L. DATUM _____

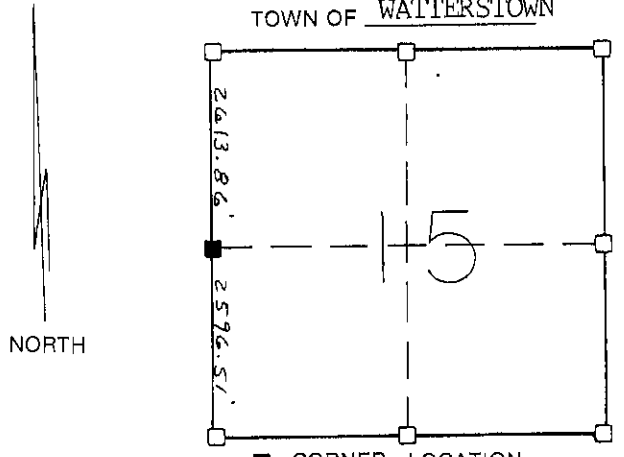
WITNESSES TO CORNER LOCATION

Christopher G. Reedy

Curtis J. Cumber

SECTION 15, T. 8 N, R. 2 W

TOWN OF WATTERSTOWN

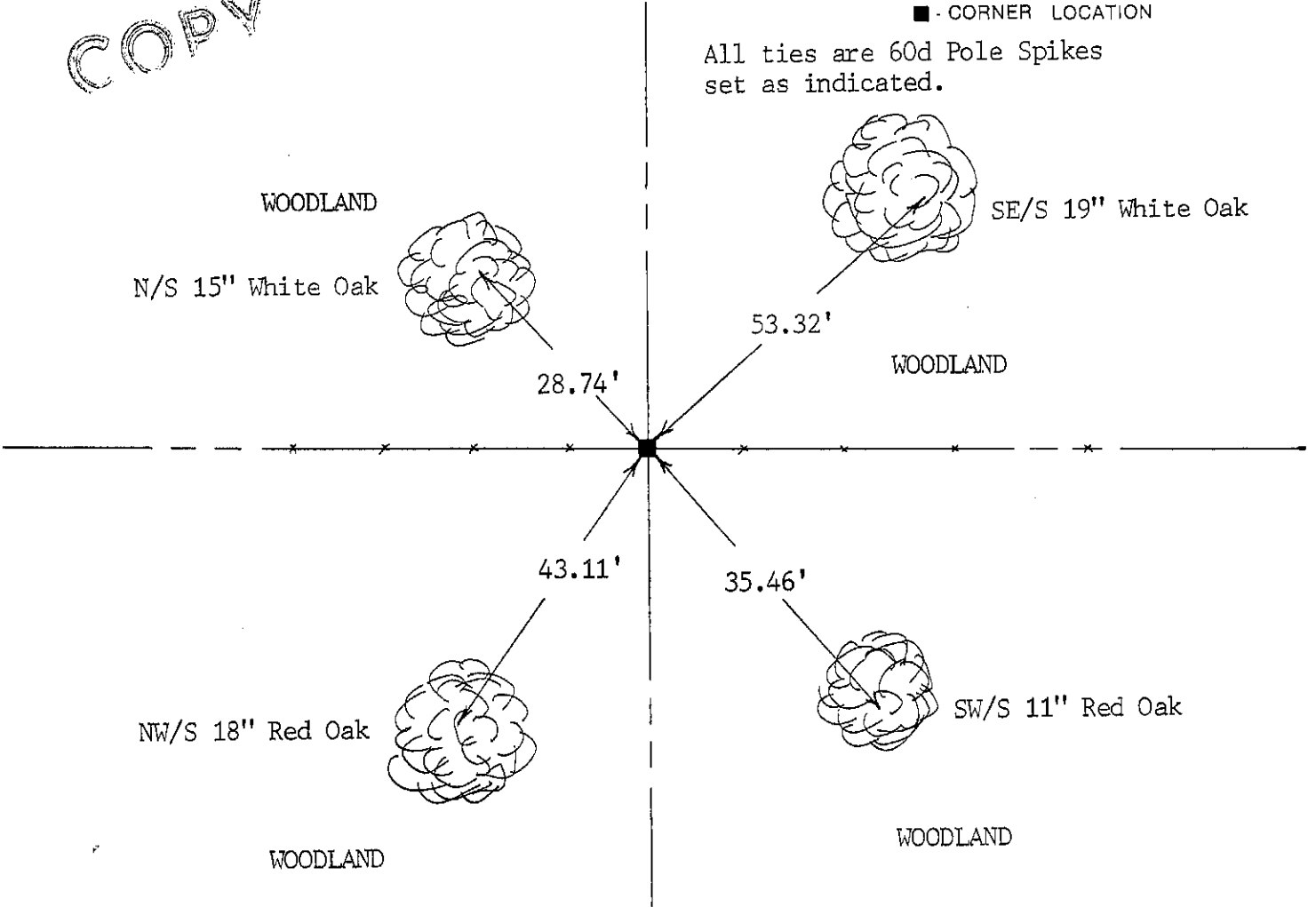


■ - CORNER LOCATION

All ties are 60d Pole Spikes set as indicated.

TIE SKETCH (SHOW ALL HELPFUL FEATURES)

COPY



SURVEYOR'S CERTIFICATE

SEAL S. 2016

I, Sean M. Walsh DO HEREBY CERTIFY THAT I have re-established
this corner at the point where a straight line between the Northwest
and Southwest corners of the Section intersect the occupied East/West
quarter line, as there is no other evidence available. This information
is correct and true to the best of my knowledge and belief.



DATED THIS 17 DAY OF April, 19 95

Sean M. Walsh
 REGISTERED LAND SURVEYOR