

COPY

RECORDED

GOVERNMENT CORNER RECORD

CENTER 1/4 CORNER, SECTION 16, TOWNSHIP 8 NORTH, RANGE 2 EAST, WEST, APR 25 1995

TOWN, CITY OR VILLAGE OF WATERSTOWN

TYPE OF MONUMENT: AXLE ROD ELEVATION - M.S.L. DATUM

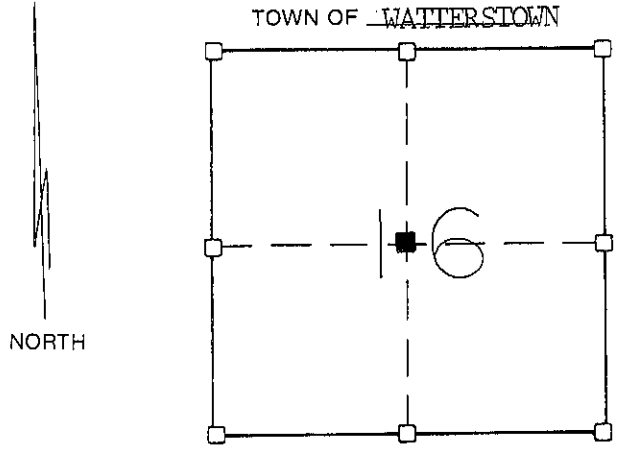
WITNESSES TO CORNER LOCATION

Christopher G. Reedy

Curtis J. Cumber

SECTION 16, T 8 N, R 2 EW

TOWN OF WATERSTOWN

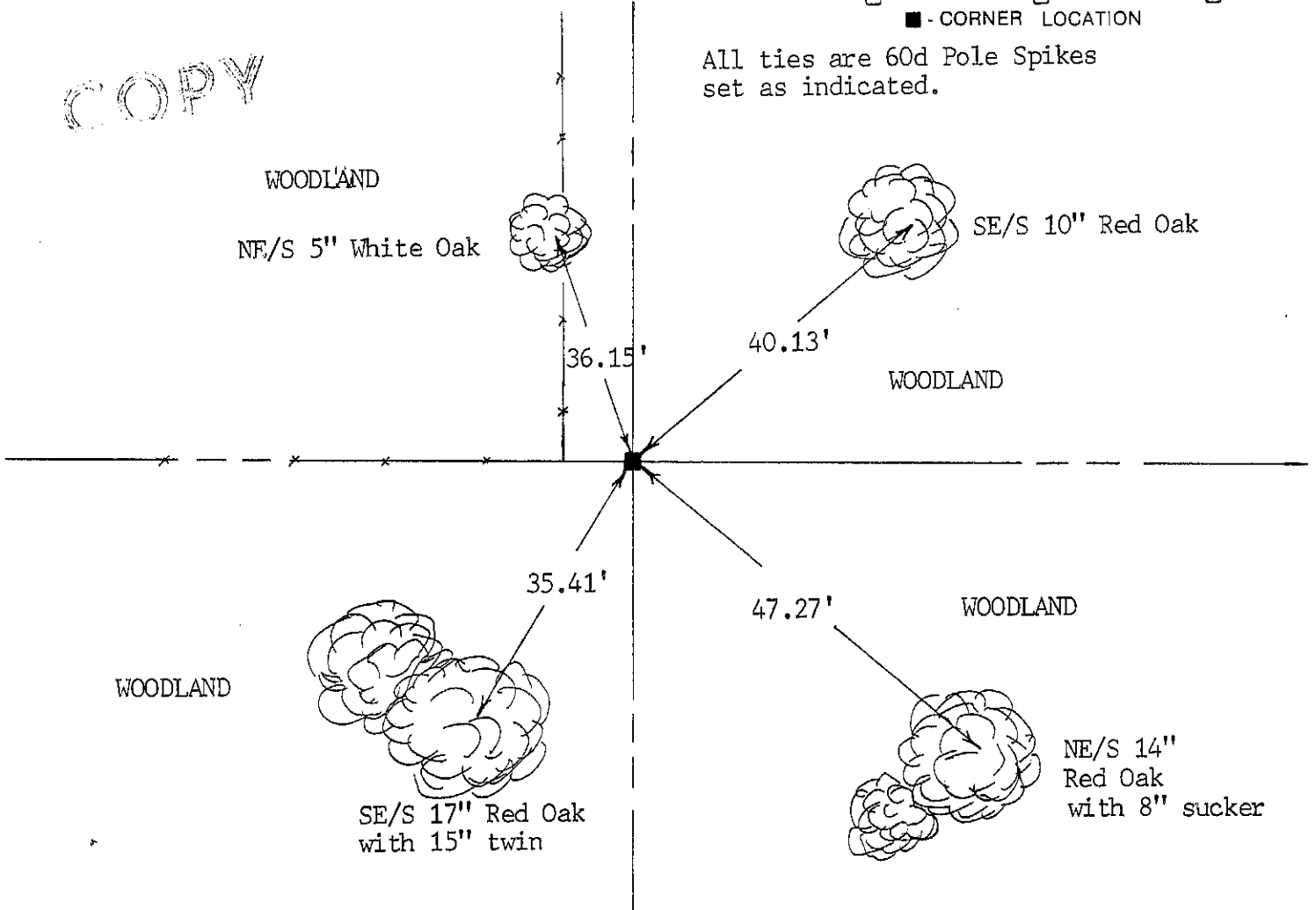


■ - CORNER LOCATION

All ties are 60d Pole Spikes set as indicated.

TIE SKETCH (SHOW ALL HELPFUL FEATURES)

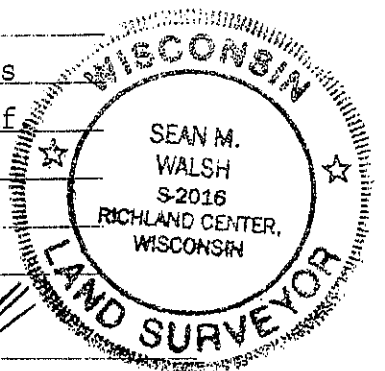
COPY



SURVEYOR'S CERTIFICATE

SEAL S. 2016

I, Sean M. Walsh, DO HEREBY CERTIFY THAT I have accepted and perpetuated this corner as shown hereon and that this information is correct and true to the best of my information, knowledge and belief. I located an axle rod at this location and accepted it as the best available evidence as it is near the occupied location for the corner.



DATED THIS 17 DAY OF April, 19 95

Sean M. Walsh
REGISTERED LAND SURVEYOR