

CERTIFIED LAND CORNER

STATE OF WISCONSIN )  
 COUNTY OF GRANT ) s.s.

CERTIFICATE

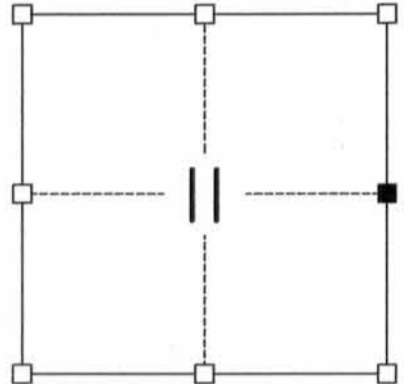
I, Jay P. Adams, do hereby certify that on the 14 th day of October, 2009 I found (evidence)(~~no evidence~~) of the East Quarter Corner of Section 11, T. 8 N., R. 2 W. of the Fourth Principal Meridian, and I re-established said corner according to the Wisconsin Statutes as shown and described hereon.

Dated this 27<sup>th</sup> day of OCTOBER, 2009.

Jay P. Adams  
 Registered Land Surveyor S-2879



Seal



■ = CORNER LOCATION  
 T 8 N R 2 W  
 Town of Watterstown

History of original corner establishment:

ORIGINAL GOVERNMENT SURVEY PERFORMED BY HARVEY PARKE IN THE FIRST QUARTER OF 1833. NUMEROUS PLATS OF SURVEY, CSM'S, SUBDIVISION AND RIGHT-OF-WAY PLATS REFERENCE THIS CORNER. MOST RECENTLY, A TIE SHEET FILED BY LAURENCE E. SCHMIT DATED 7, FEBRUARY, 1995 NOTES A 3/4" IRON ROD MONUMENT SET AT THE CORNER.

Description of corner evidence found:

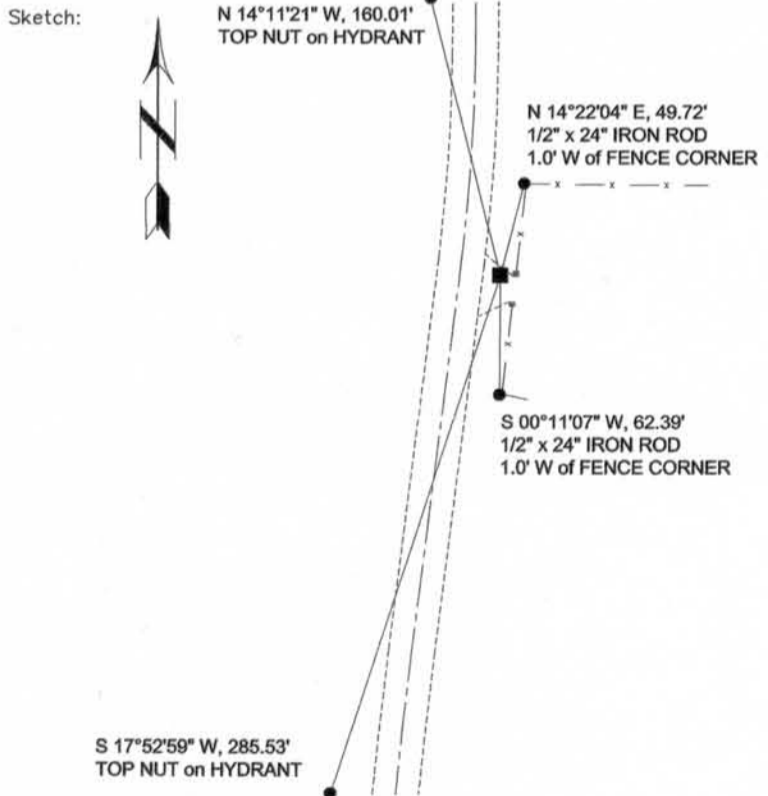
NO MONUMENT WAS RECOVERED AT THE CORNER. RECENT ROAD CONSTRUCTION OF COUNTY HIGHWAY "T" HAS LIKELY DESTROYED THE MONUMENT SET BY SCHMIT. I SET A PK NAIL IN AN ASPHALT FIELD ENTRANCE AFTER CONSIDERING: COUNTY COORDINATES REFERENCED ON RIGHT-OF-WAY PLAT 5919-00-00 DATED 10 AUGUST, 2006, EXISTING RIGHT-OF-WAY MONUMENTS AND PREVIOUS TIES BY SCHMIT.

Description of corner and witness monuments, references and accessories used to perpetuate the original or re-established location of this corner:

Witnesses to corner location:

Jay P. Adams  
Jeremy F. Krachey

Sketch:



- PK NAIL SET
- ACCESSORY TIE (SEE DESCRIPTION)

SURVEY CONTROL ORDER

Horizontal	-
Vertical	-

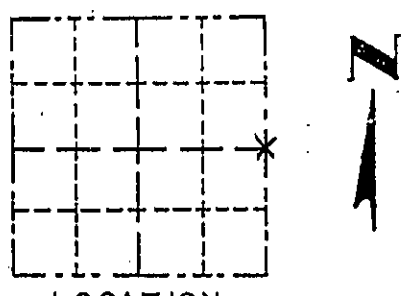
GRANT COUNTY COORDINATE SYSTEM

Corner	North (Y)	East (X)	Elevation (Z)	Zone
E 1/4 COR (PK NAIL)	646,118.81	857,124.08	-	

Survey Monument Record

CORNER NO. 39  
 SECTION 11  
 TOWN 8N  
 RANGE 2W

TYPE OF MONUMENT 3/4" rebar  
 STATE PLANE COORDINATES: N \_\_\_\_\_  
 E \_\_\_\_\_  
 ELEVATION — M.S.L. DATUM: \_\_\_\_\_  
 THETA ANGLE: \_\_\_\_\_  
 FIELD BOOK: 95-1  
 PAGE 68



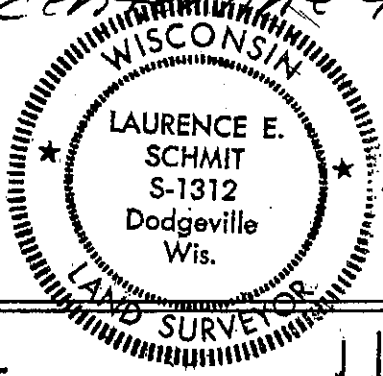
LOCATION  
(Indicated by "X")

BASIS FOR MONUMENT LOCATION

(Use reverse side if necessary)  
 Show info such as: History of corner, with reference to Vol. and pg., dates, surveyor; exact description of monument replaced; if location computed, by taped or EDM traverse; landowner, remarks, etc.

SEAL:

A 3/4" rebar was placed at the record location of a railroad spike according to the Plat of A 1<sup>st</sup> Addition to Homewood's Addition in the Village of Blue River. R.R. spike was removed during road construction. It fits fence lines and occupied 40 corners to west and road centerline to north well.



CERTIFIED CORRECT  
*Laurence E. Schmit*  
 Registered Land Surveyor  
 DATE: 9-7-95

TIE SKETCH

Show at least three (4) ties and monument

Legend

\*\*\* Fence

