

# GRANT COUNTY CERTIFIED U.S. PUBLIC LAND SURVEY MONUMENT RECORD

DATUM: NAD 83 (2011)	GRANT COUNTY COORDINATES	
CONTROL: COMBINATION OF GPS AND CONVENTIONAL FIELD CONTROL	NORTH	646,158.23'
	EAST	849,088.88'

*THE CENTER OF SECTION 10, TOWN 8 NORTH,  
RANGE 2 WEST, TOWN OF WATTERSTOWN,  
GRANT COUNTY, WISCONSIN.*

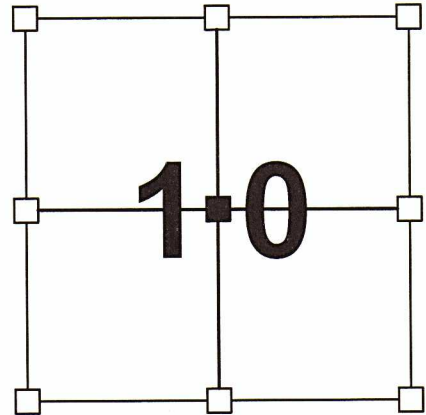
(A) IDENTIFY THE CORNER BY REFERENCE TO THE U.S. PUBLIC LAND SURVEY SYSTEM

■ = CORNER MONUMENT RESTORED

WITNESS TO CORNER LOCATION:

TODD T. RUMMLER

GAIGE DILLEY



SECTION 10  
TOWN 8 NORTH  
RANGE 2 WEST

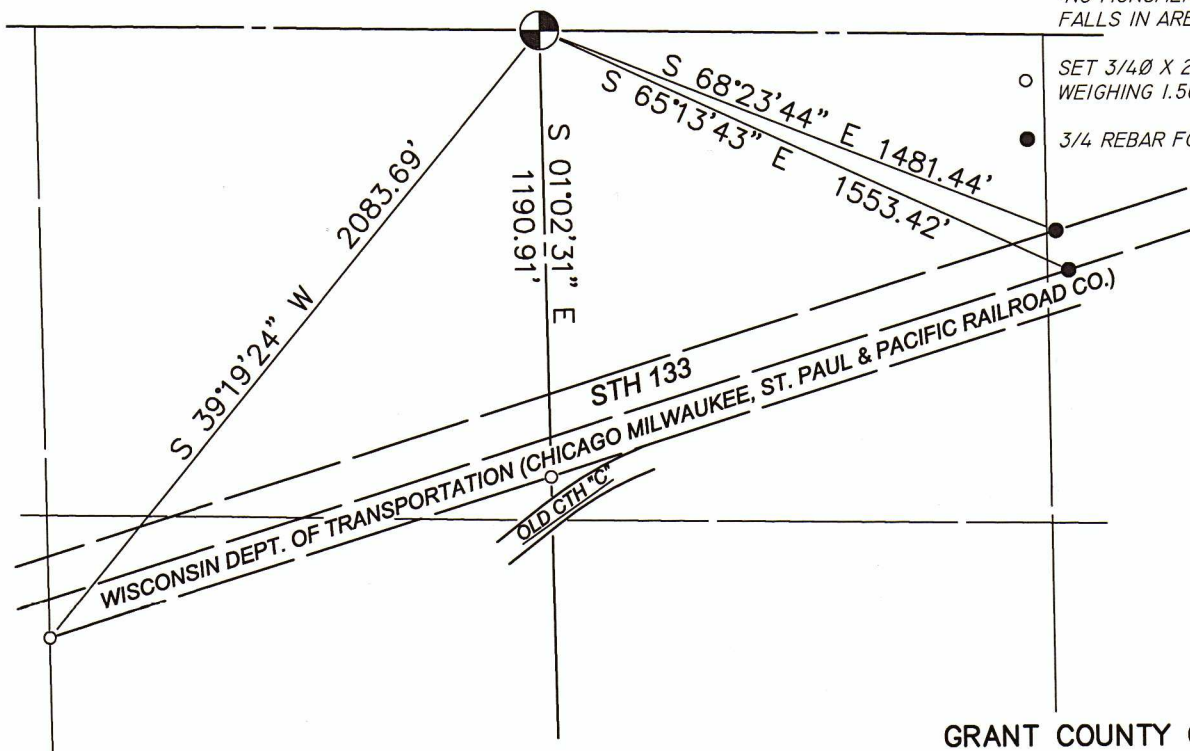
(B) DESCRIBE ANY RECORD EVIDENCE, MONUMENT EVIDENCE, OCCUPATIONAL EVIDENCE, TESTIMONIAL EVIDENCE OR ANY OTHER MATERIAL EVIDENCE YOU CONSIDERED, AND WHETHER THE MONUMENT WAS FOUND OR PLACED.

LARRY AUSTIN, S-1903 SHOWS THAT HE SET A No. 8 REBAR WITH ALUMINUM CAP AND REFERENCE TIES ON HIS TIE SHEET DATED AUGUST 1, 2001. AT THE TIME I WENT SEARCHING FOR THIS CORNER MONUMENT (EARLY APRIL, 2021), THE ENTIRE AREA WAS UNDER ABOUT 4 FEET OF WATER. I COMPUTED A LOCATION FOR THE CORNER MONUMENT BASED ON THE DATA SHOWN ON THE PLANS FOR WISDOT R/W PROJECT 5616-01-21 DATED FEBRUARY 19, 2002. I THEN WADED OUT INTO THE WATER WITH METAL DETECTOR AND GPS EQUIPMENT AND STAKED OUT TO THE COMPUTED CORNER LOCATION. I WAS UNABLE TO FIND THE MONUMENT EVEN THOUGH I SEARCHED A WIDE AREA AROUND THE COMPUTED CORNER LOCATION. IN ADDITION TO THE AREA BEING UNDER 4 FEET OF WATER, THE BOTTOM IS SOFT ORGANIC MUCK AND THE SEARCH WAS VERY DIFFICULT TO CONDUCT. SINCE I WAS UNABLE TO LOCATE THE ACTUAL CORNER MONUMENT OR THE REFERENCE TIES, I ACCEPTED THE COMPUTED LOCATION OF THE CORNER MONUMENT AND ESTABLISHED NEW REFERENCE TIES TO PERPETUATE THE COMPUTED LOCATION AS SHOWN BELOW.

(C) IN THE PLAN VIEW DRAWING BELOW, PROVIDE REFERENCE TIES TO AT LEAST 4 WITNESS MONUMENTS OR, IF THE LOCATION IS WITHIN A MUNICIPALITY, TO AT LEAST 2 WITNESS MONUMENTS. (WITNESS MONUMENTS SHALL BE MADE ON CONCRETE, NATURAL STONE, IRON, OR OTHER EQUALLY DURABLE MATERIAL.) DESCRIBE WITNESS MONUMENTS.

### LEGEND

- CENTER OF SECTION 10, T8N, R2W  
COMPUTED CORNER LOCATION  
-NO MONUMENT FOUND OR SET-  
FALLS IN AREA OF OPEN WATER
- SET 3/4" X 24" LONG REBAR  
WEIGHING 1.502 LB./FT.
- 3/4" REBAR FOUND



NOT TO SCALE

- (D) DESCRIBE ANY MATERIAL DISCREPANCY BETWEEN THE LOCATION OF THE CORNER AS RESTORED OR REESTABLISHED AND THE LOCATION OF THAT CORNER AS PREVIOUSLY RESTORED OR REESTABLISHED BY DISTANCE AND DIRECTION. SHOW THE DISCREPANCY ON THE PLAN VIEW DRAWING UNDER (C), ABOVE. SHOW THE DISTANCES BETWEEN THE CORNER AS PREVIOUSLY RESTORED OR REESTABLISHED AND (1) THE CORNER AS RESTORED OR REESTABLISHED, AND (2) TO AT LEAST 2 OF THE WITNESS MONUMENTS AS SHOWN ON THE DRAWING IN (C), ABOVE.

NONE

- (E) WAS THE CORNER RESTORED THROUGH ACCEPTANCE OF (1) AN OBLITERATED EVIDENCE LOCATION, OR (2) A FOUND PERPETUATED LOCATION?

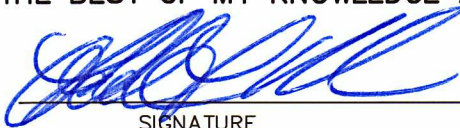
2.) A FOUND PERPETUATED LOCATION

- (F & G) WAS THE CORNER REESTABLISHED THROUGH LOST CORNER PROPORTIONATE METHODS? IF SO SHOW THE METHOD, INCLUDING THE DIRECTION AND DISTANCED TO OTHER PUBLIC LAND SURVEY CORNERS USED AS EVIDENCE OR USED FOR PROPORTIONING IN DETERMINING THE CORNER LOCATION.

NO.

AFFIX LAND SURVEYOR SEAL

- (H) I, TODD T. RUMMLER, RLS-2443 CERTIFY THAT THE CORNER LOCATION SHOWN ON THIS RECORD WAS DETERMINED BY ME OR UNDER MY DIRECTION AND CONTROL AND THAT THIS U.S. PUBLIC LAND SURVEY MONUMENT RECORD IS CORRECT AND COMPLETE TO THE BEST OF MY KNOWLEDGE AND BELIEF.



SIGNATURE

10/28/2021

DATE



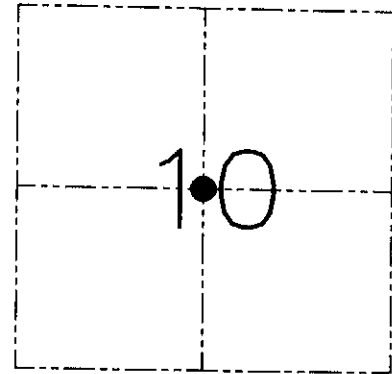
**U.S. PUBLIC LAND SURVEY MONUMENT RECORD - GRANT COUNTY, WI**  
 Section 10, Town 8 North Range 2 West, Town of Watterstown

**CERTIFICATE**

I, Larry L. Austin, do hereby certify that the corner location on this record was determined by me and/or under my direct supervision and that this U.S. public land survey monument record is correct and complete to the best of my knowledge and belief.

Dated this 1st day of August, 2001

*Larry L. Austin*  
 Larry L. Austin S-1903



● = CORNER LOCATION

**HISTORY OF CORNER ESTABLISHMENT**

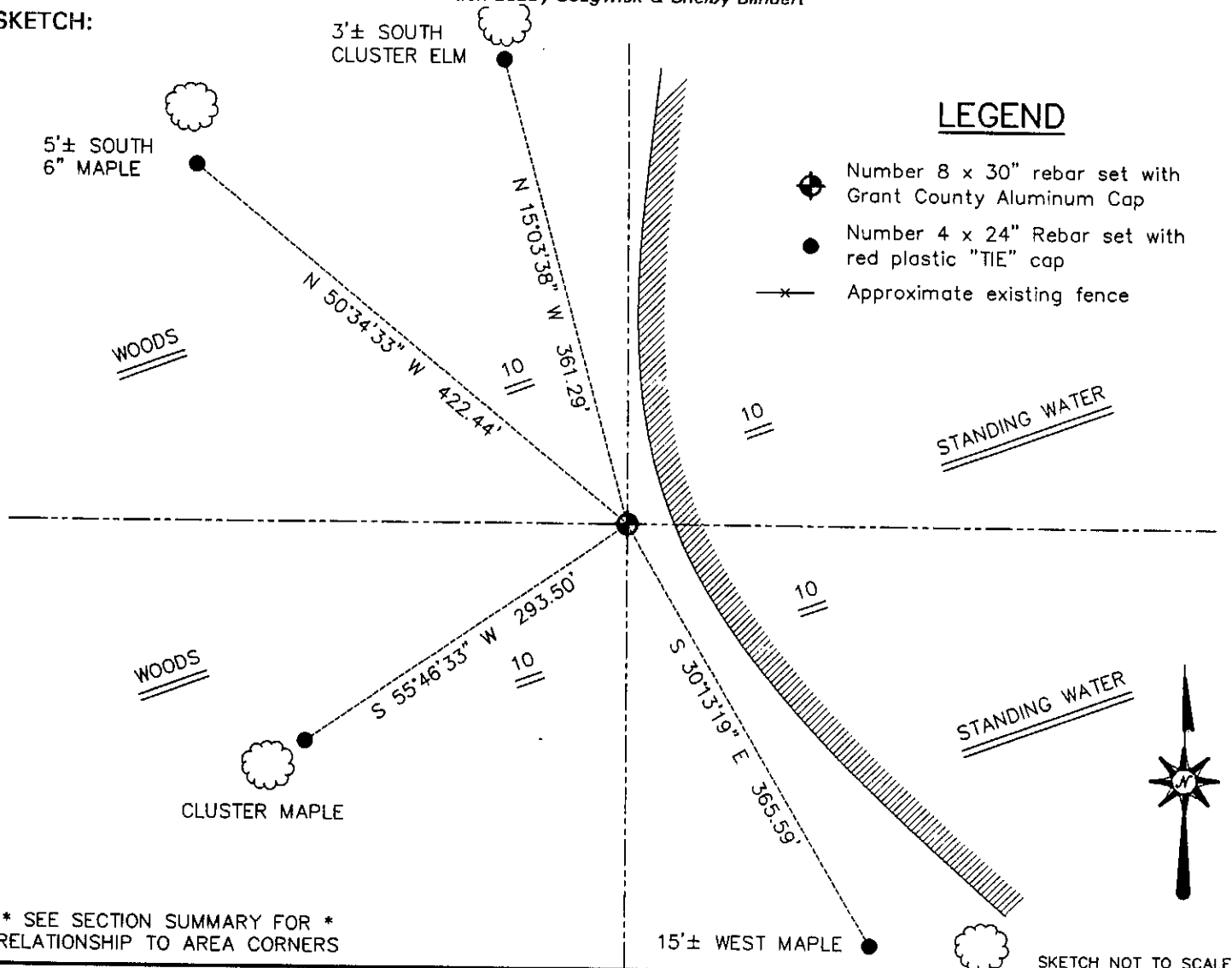
Corner was never originally set.  
 In 1888 Goald set a post at this location.

**DESCRIPTION OF CORNER EVIDENCE FOUND**

I was unable to locate the post. I reset the corner based on measurements to adjoining corners on the East-West Quarter line. Verified this location using EDM & GPS methods.

**DESCRIPTION OF CORNER AND WITNESS MONUMENTS, references and accessories used to perpetuate the original or re-established location of this corner. Witnesses to the corner location Bobby Sedgwick & Shelby Blindert**

**SKETCH:**



**LEGEND**

- ◆ Number 8 x 30" rebar set with Grant County Aluminum Cap
- Number 4 x 24" Rebar set with red plastic "TIE" cap
- x— Approximate existing fence

\* SEE SECTION SUMMARY FOR \*  
 RELATIONSHIP TO AREA CORNERS

SKETCH NOT TO SCALE

**AUSTIN ENGINEERING, LLC**

4211 HWY 81 EAST, LANCASTER, WI 53813  
 PHONE 608-723-6363 FAX 608-723-6702

FIELDBOOK: SDR33  
 G: \T8NR2W\HWY133  
 C: \SWA\TIE\T8NR2W\375  
 CREW: BS-SB-SA-TF

DRAWN BY: SW AUSTIN  
 APPROVED: LL AUSTIN

**CORNER NUMBER 37.5**