

Wattersbown

AUG. 1988
RECEIVED

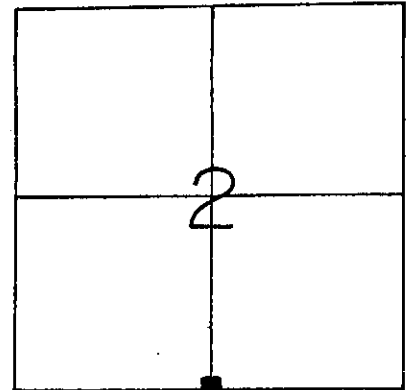
U. S. PUBLIC LAND SURVEY MONUMENT RECORD

GRANT County, Wisconsin.

Basis for monument location.

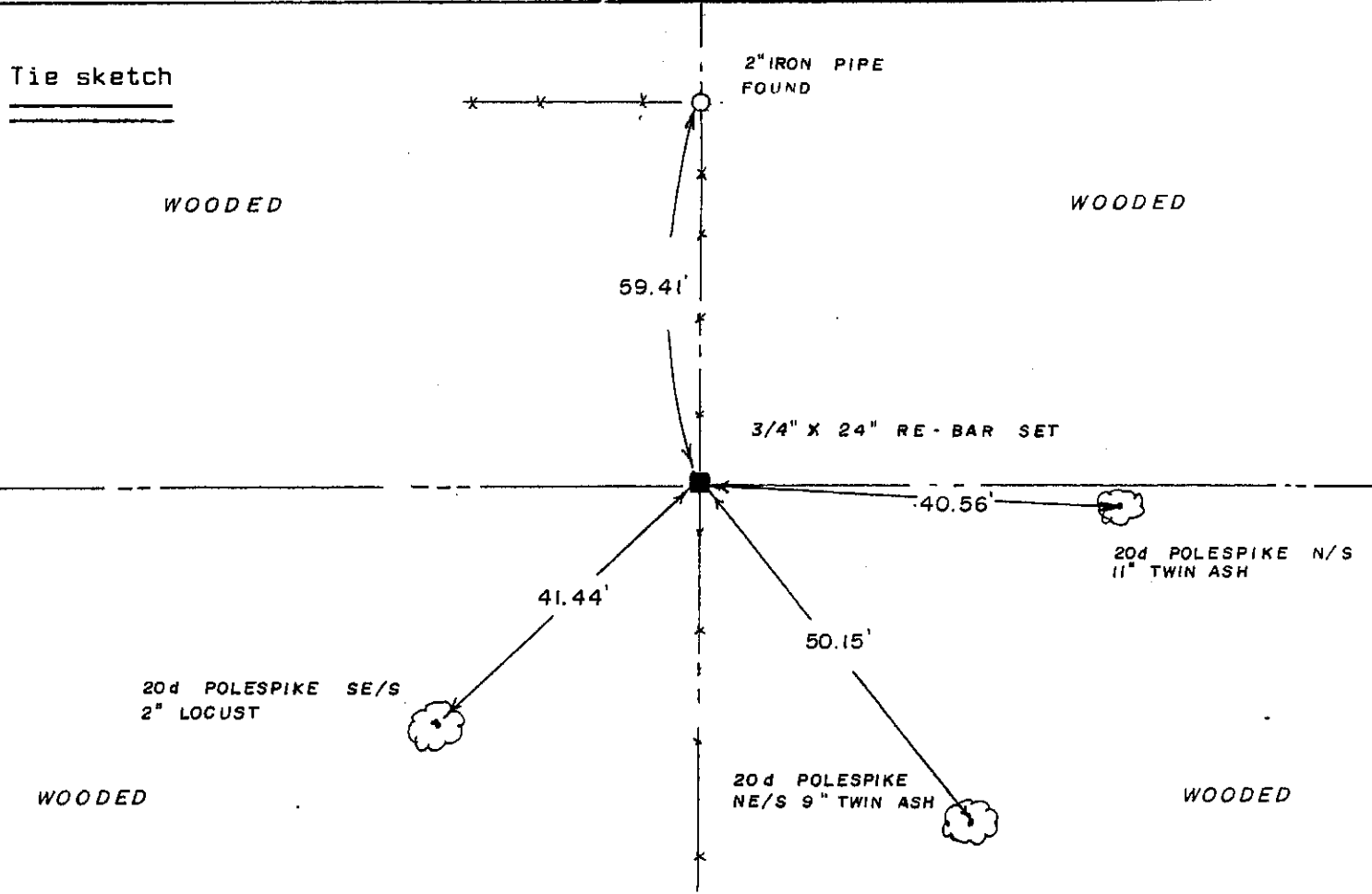
This corner was last used by P. Brashaw in 1983. He located a 2" iron pipe and used it as the corner. Upon retracing the platted areas of Blue River I found that I did not agree with his location. I re-established the North One-quarter on the extension of the platted North line of Blue River with the existing North-South fence line. This location falls 59.41 feet South the the Brashaw corner. I monumented and referenced this location as shown hereon.

Section 2, T8N, R2W



Corner Location
(Indicate by - ■)

Tie sketch



I, Matthew J. Janiak Certify that the corner location shown hereon this record was determined by me or under my direction and control and that this U. S. Public Land Survey Monument Record is correct and complete to the best of my knowledge and belief.

8/18/88
Date

[Handwritten Signature]
Registered Land Surveyor



P
[Handwritten initials]