

U.S. PUBLIC LAND SURVEY MONUMENT RECORD - GRANT COUNTY, WI

Section 11, Town 8 North Range 2 West, Town of Watterstown(a)

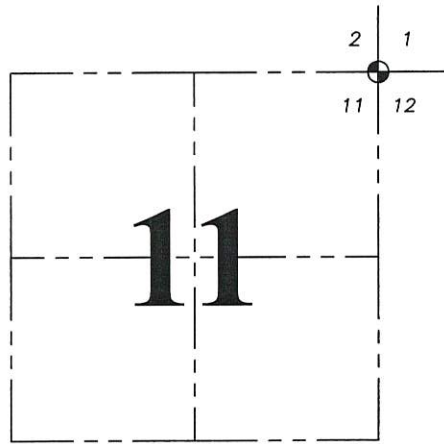
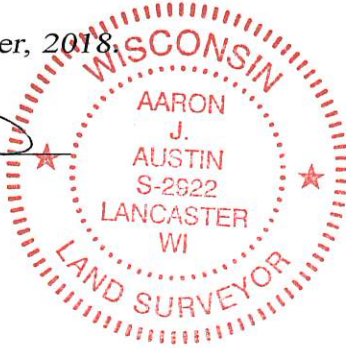
NOTE: This form is intended and designed to fulfill all requirements of the Wisconsin Administrative Code Chapter A-E 7.08, U.S. Public Land Survey Monument Record (3) (a) (b) (c) (d) (e) (f) (g) (h) (i).

CERTIFICATE: (i)

I, Aaron J. Austin, Wisconsin Professional Land Surveyor, do hereby certify that the corner location on this record was determined by me and/or under my direct supervision and that this U.S. Public Land Survey Monument Record is correct and complete to the best of my knowledge and belief.

Dated this 22nd day of September, 2018.

Aaron J. Austin
Aaron J. Austin, S-2922



⊙ = CORNER LOCATION

Grant County Coordinates:
NAD 83 (2011)
Northing: 648,762.68
Easting: 857,116.41

HISTORY OF CORNER ESTABLISHMENT:

Harvey Parke set the original corner in 1833. Matthew Janiak found a railroad spike at the corner and prepared a Survey Monument Record dated 8-19-1988. Pat Dederich found Janiak's witness corners and set a 3/4" at the corner and prepared a Survey Monument Record dated 4-6-1999.

DESCRIPTION OF CORNER EVIDENCE FOUND: (b) (f) (g) (h)

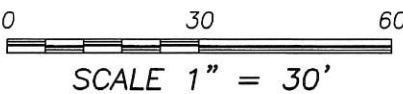
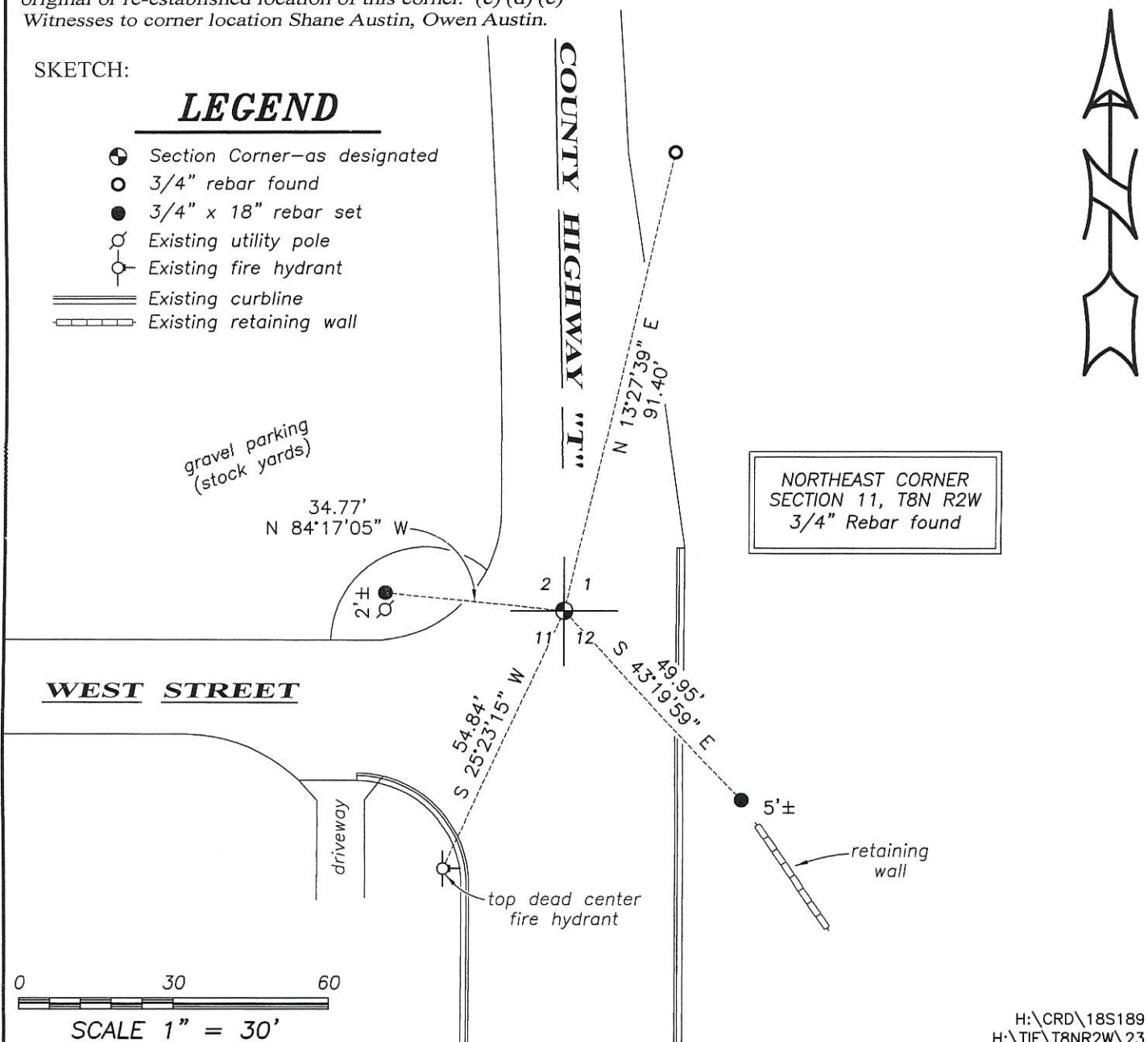
I found the 3/4" rebar as set by Dederich and one witness corner. I established three new witness corners after I verified the monuments location with E.D.M. and G.P.S. methods.

DESCRIPTION OF CORNER AND WITNESS MONUMENTS, references and accessories used to perpetuate the original or re-established location of this corner. (c) (d) (e)
Witnesses to corner location Shane Austin, Owen Austin.

SKETCH:

LEGEND

- ⊙ Section Corner—as designated
- 3/4" rebar found
- 3/4" x 18" rebar set
- ⊕ Existing utility pole
- ⊖ Existing fire hydrant
- ==== Existing curbline
- ▤ Existing retaining wall



CERTIFIED U. S. PUBLIC LAND SURVEY MONUMENT RECORD

INSTRUCTIONS: THIS RECORD SHALL SHOW THE LOCATION OF THE CORNER AND SHALL INCLUDE ALL OF THE FOLLOWING NINE ELEMENTS (A THROUGH I)

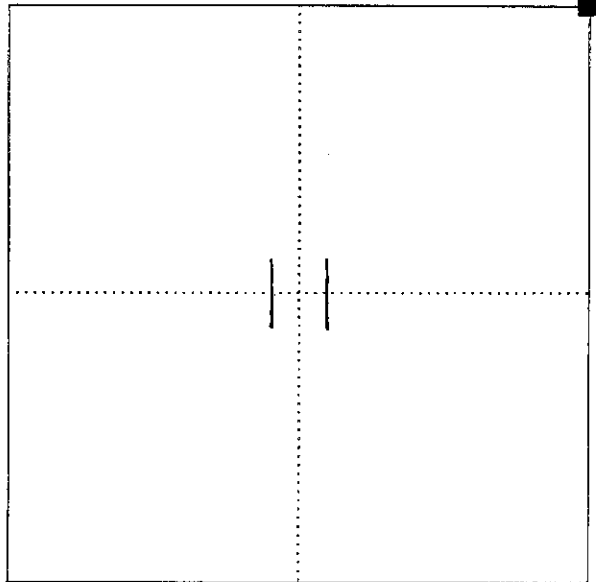
(A) IDENTIFY THE CORNER BY REFERENCE TO THE U. S. PUBLIC LAND SURVEY SYSTEM

■ = CORNER MONUMENT RESTORED

Witnesses to Corner Location:

Christopher G. Reedy

Dale D. Tydrich



SECTION 11 T 8 N, R 2 W

STATE PLANE COORDINATES (WISCONSIN SOUTH ZONE)

NORTHING:

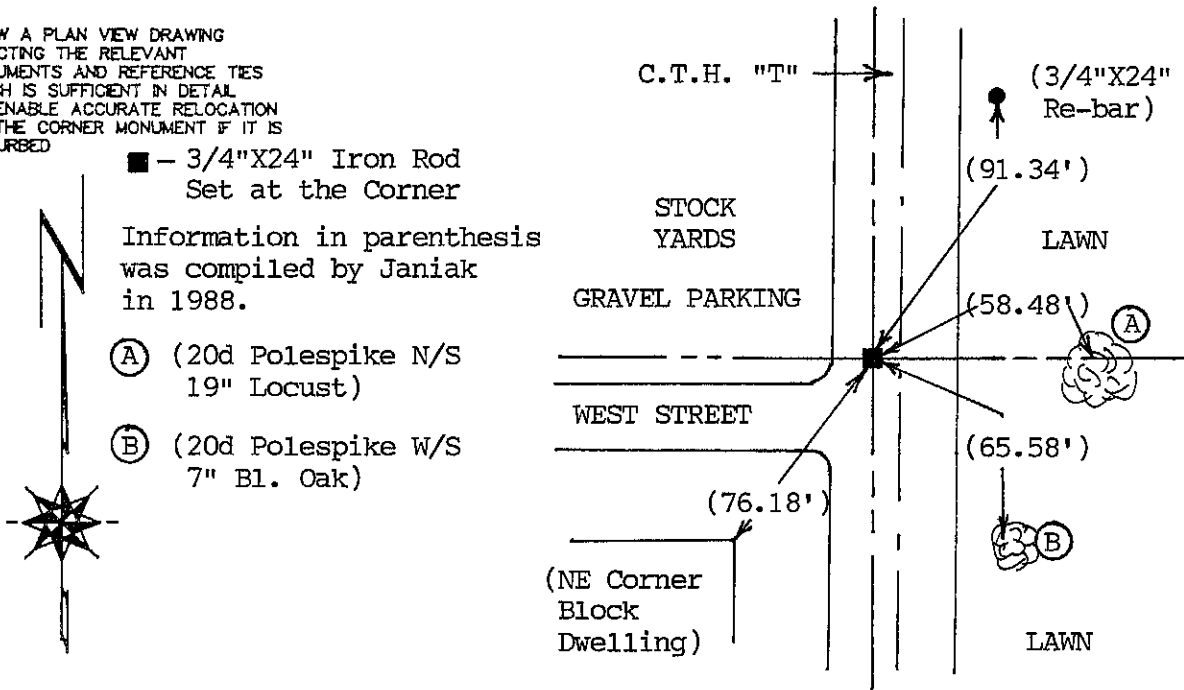
EASTING:

(B) DESCRIBE ANY RECORD EVIDENCE, MONUMENT EVIDENCE, OCCUPATIONAL EVIDENCE, TESTIMONIAL EVIDENCE OR ANY OTHER MATERIAL EVIDENCE YOU CONSIDERED, AND WHETHER THE MONUMENT WAS FOUND OR PLACED

In 1988 Matthew J. Janiak found a railroad spike at this corner and set four ties to perpetuate it. The railroad spike was lost in the reconstruction of Highway "T" but the ties remained undisturbed. The corner was re-established from the ties and a 3/4" X 24" iron rod was set at the location.

(C) IN THE PLAN VIEW DRAWING BELOW, PROVIDE REFERENCE TIES TO AT LEAST 4 WITNESS MONUMENTS, OR, IF THE LOCATION IS WITHIN A MUNICIPALITY, TO AT LEAST 2 WITNESS MONUMENTS, (WITNESS MONUMENTS SHALL BE MADE OF CONCRETE, NATURAL STONE, IRON OR OTHER EQUALLY DURABLE MATERIAL). DESCRIBE WITNESS MONUMENTS.

(D) SHOW A PLAN VIEW DRAWING DEPICTING THE RELEVANT MONUMENTS AND REFERENCE TIES WHICH IS SUFFICIENT IN DETAIL TO ENABLE ACCURATE RELOCATION OF THE CORNER MONUMENT IF IT IS DISTURBED



■ - 3/4"X24" Iron Rod Set at the Corner

Information in parenthesis was compiled by Janiak in 1988.

(A) (20d Polespike N/S 19" Locust)

(B) (20d Polespike W/S 7" Bl. Oak)



(E) DESCRIBE ANY MATERIAL DISCREPANCY BETWEEN THE LOCATION OF THE CORNER AS RESTORED OR REESTABLISHED AND THE LOCATION OF THAT CORNER AS PREVIOUSLY RESTORED OR REESTABLISHED BY DISTANCE AND DIRECTION. SHOW THE DISCREPANCY ON THE PLAN VIEW DRAWING UNDER (D), ABOVE. SHOW THE DISTANCES BETWEEN THE CORNER AS PREVIOUSLY RESTORED OR RE-ESTABLISHED AND (1) THE CORNER AS RESTORED OR REESTABLISHED, AND (2) TO AT LEAST 2 OF THE WITNESS MONUMENTS SHOWN ON THE DRAWING IN (D), ABOVE.

No discrepancies.

(F) WAS THE CORNER RESTORED THROUGH ACCEPTANCE OF (1) AN OBLITERATED EVIDENCE LOCATION, OR, (2) A FOUND PERPETUATED LOCATION?

A found perpetuated location.

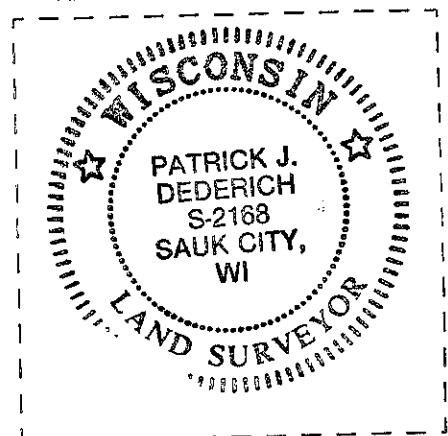
(G & H) WAS THE CORNER REESTABLISHED THROUGH LOST CORNER PROPORTIONATE METHODS? IF SO SHOW THE METHOD, INCLUDING THE DIRECTIONS AND DISTANCES TO OTHER PUBLIC LAND SURVEY CORNERS USED AS EVIDENCE OR USED FOR PROPORTIONING IN DETERMINING THE CORNER LOCATION.

No.

(I) I, Patrick J. Dederich
CERTIFY THAT THE CORNER LOCATION SHOWN
ON THIS RECORD WAS DETERMINED BY ME OR UNDER MY DIRECTION AND
CONTROL AND THAT THIS U. S. PUBLIC LAND SURVEY MONUMENT RECORD IS
CORRECT AND COMPLETE TO THE BEST OF MY KNOWLEDGE AND BELIEF.

Patrick J. Dederich 4/6/99
SIGNATURE DATE

AFFIX LAND SURVEYOR SEAL



Watterstown

AUG

RECEIVED

U. S. PUBLIC LAND SURVEY MONUMENT RECORD

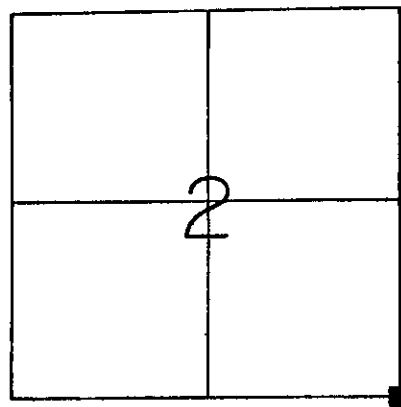
GRANT County, Wisconsin.

Basis for monument location.

Located a railroad spike at the corner which is 3'+- West of the centerline of C. T. H. "T". This corner has been referenced in the Grant County Survey Records. I accepted this spike as the corner and referenced it as shown hereon to perpetuate its location.

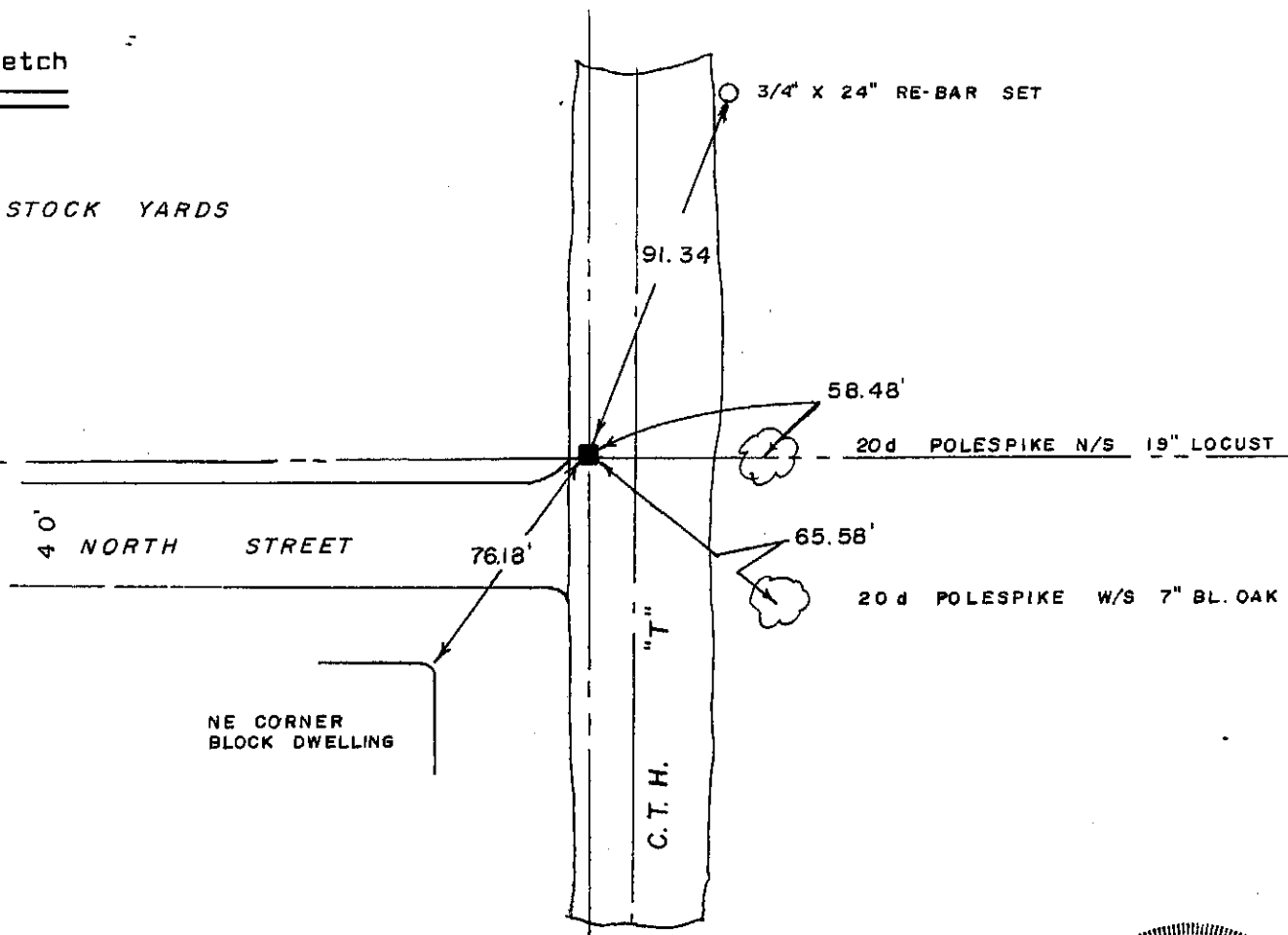


Section 2, T8N, R2W



Corner Location (Indicate by - ■)

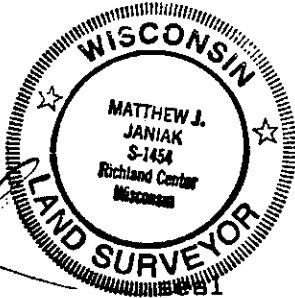
Tie sketch



I, Matthew J. Janiak Certify that the corner location shown hereon this record was determined by me or under my direction and control and that this U. S. Public Land Survey Monument Record is correct and complete to the best of my knowledge and belief.

8/19/88
Date

Registered Land Surveyor



881
P