

U.S. PUBLIC LAND SURVEY MONUMENT RECORD – GRANT COUNTY, WI

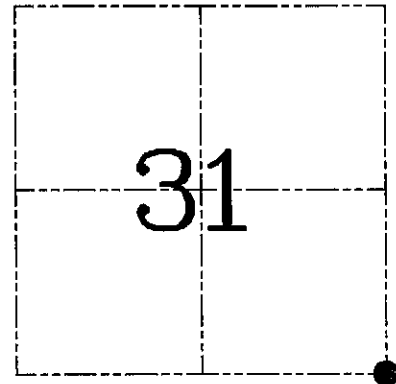
Section 31, Town 8 North Range 1 West, Town of Muscoda

CERTIFICATE

I, Larry L. Austin, do hereby certify that the corner location on this record was determined by me and/or under my direct supervision and that this U.S. public land survey monument record is correct and complete to the best of my knowledge and belief.

Dated this 28th day of March 2006

Larry L. Austin
Larry L. Austin S-1903



● = CORNER LOCATION

HISTORY OF CORNER ESTABLISHMENT

Corner was originally set by Lyon.
No other record of the corner was found.

DESCRIPTION OF CORNER EVIDENCE FOUND

I reset the corner at the recorded offset from the existing Northeast corner of Section 6, T7N R1W. Verified this location using EDM & GPS methods.

DESCRIPTION OF CORNER AND WITNESS MONUMENTS, references and accessories used to perpetuate the original or re-established location of this corner. Witnesses to corner location Brad Digman & Shane Austin

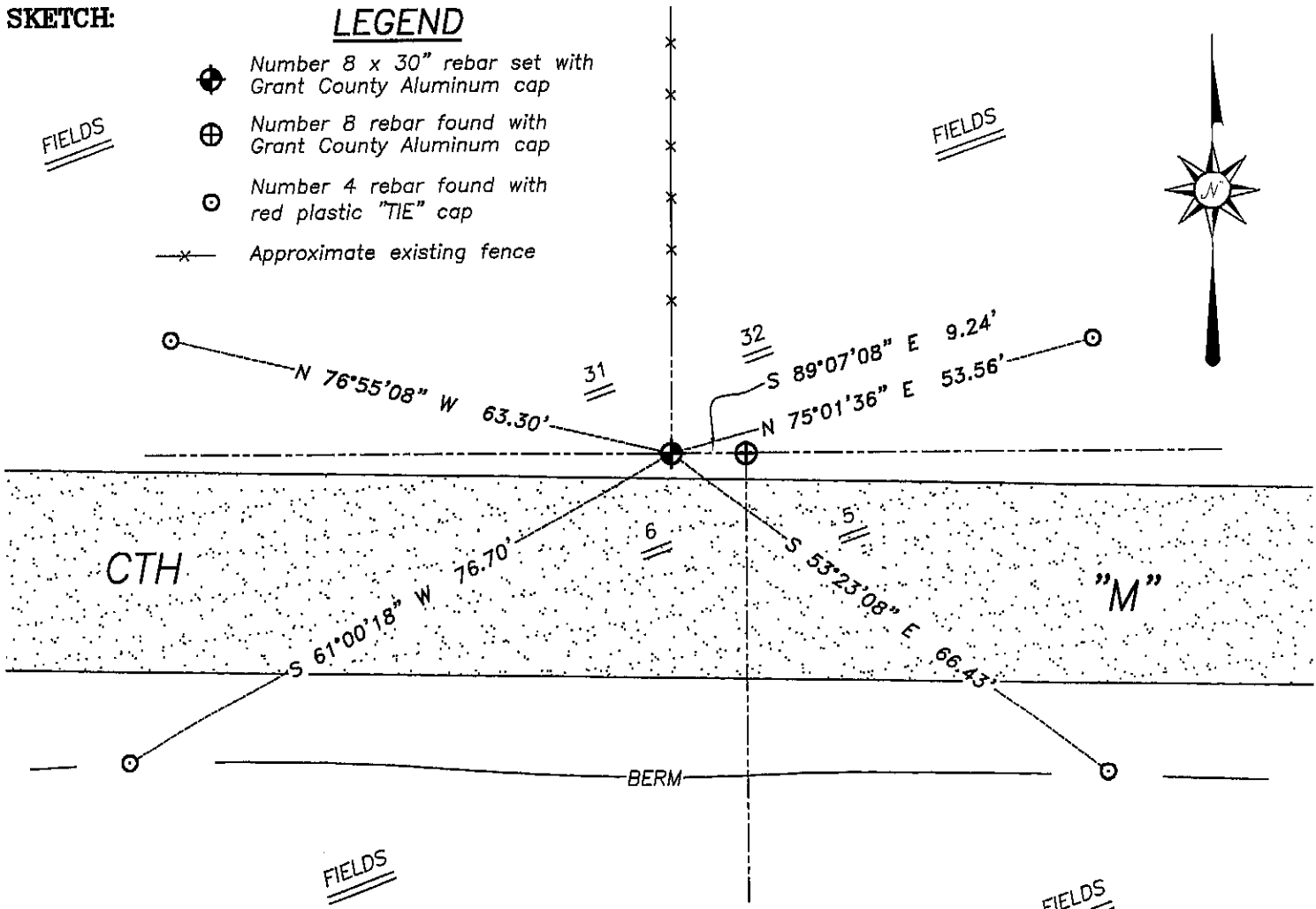
SKETCH:

LEGEND

- ⊕ Number 8 x 30" rebar set with Grant County Aluminum cap
- ⊕ Number 8 rebar found with Grant County Aluminum cap
- ⊙ Number 4 rebar found with red plastic "TIE" cap
- x- Approximate existing fence

FIELDS

FIELDS



* SEE SECTION SUMMARY FOR *
RELATIONSHIP TO AREA CORNERS

SKETCH NOT TO SCALE



Austin Engineering LLC

4211 HWY 81 E, LANCASTER, WI 53813
PHONE 608-723-6363 FAX 608-723-6702

JOB NUMBER 06S067
FIELDBOOK: TDSR, 2515
G:\T7NR1W\06
H:\TIE\T8NR1W\131

DRAWN BY: SW AUSTIN
APPROVED: LL AUSTIN