

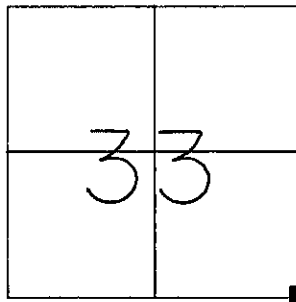
GRANT COUNTY

U.S. PUBLIC LAND SURVEY MONUMENT RECORD

TYPE OF MONUMENT: 1" Iron Pipe
TIES ARE AS INDICATED ON SKETCH

WITNESSES TO CORNER LOCATION

Sean M. Walsh
Christopher G. Reedy



CORNER LOCATION
Southeast Corner
Section 33, T8N, R1W
Town of Muscoda

BASIS FOR MONUMENT LOCATION

Subsequent to Original Government survey, this corner was used by Joel Barber in 1880 in conjunction with a survey to subdivide the Southeast One-quarter of Section 33. No mention of monumentation or ties.

This corner was used by Terry Cornell in February of 1993, at which time he indicated having set a 1" iron pipe.

This corner was used again in March of 1995 by Terry Cornell, at which time he indicated having located a 1" iron pipe.

I located a 1" iron pipe at this location which fits well with the information previously documented by Mr. Cornell.

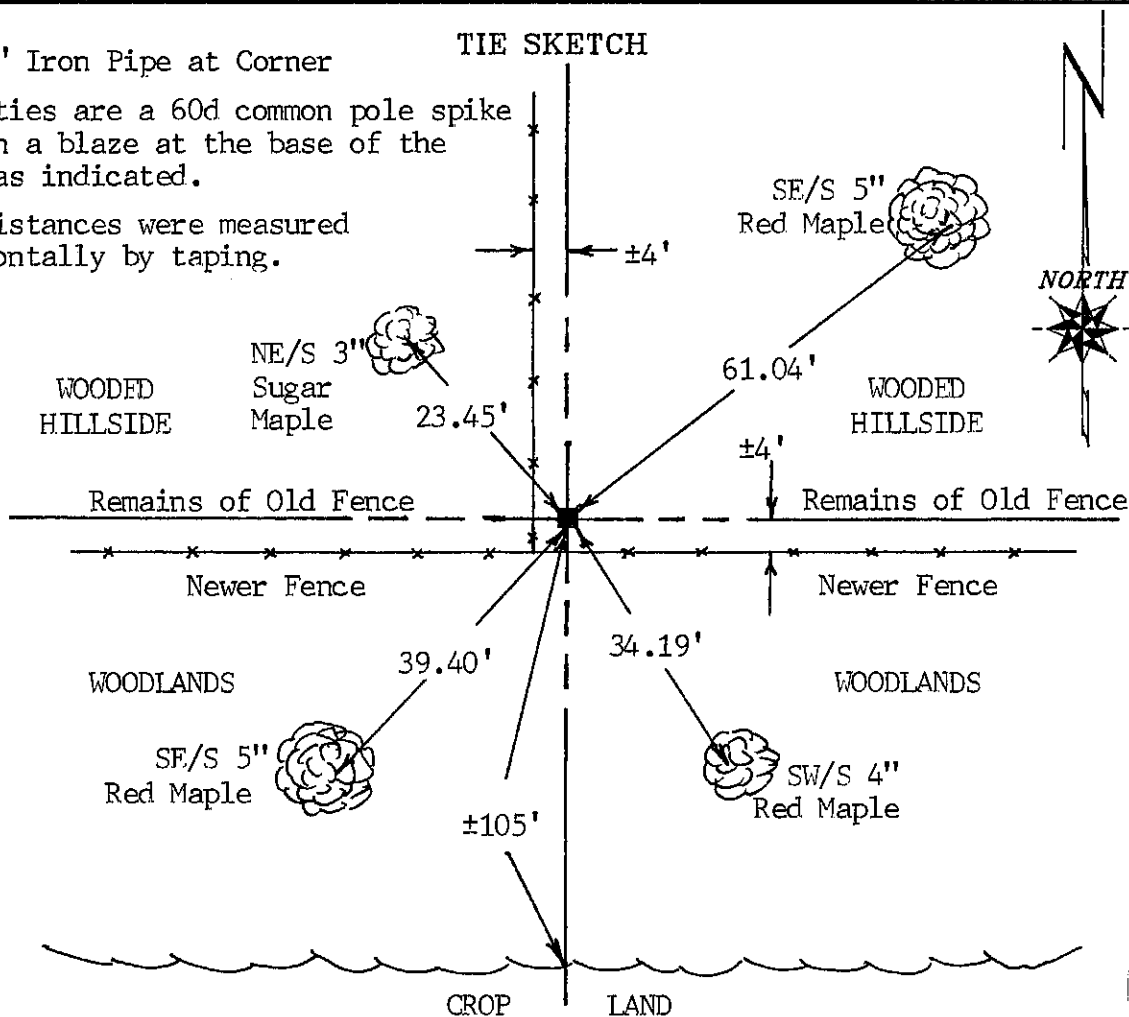
I have accepted and perpetuated this corner in accordance with the information contained hereon and do hereby certify that this information is correct to the best of my knowledge and belief.

■ - 1" Iron Pipe at Corner

Tree ties are a 60d common pole spike set in a blaze at the base of the tree as indicated.

Tie distances were measured horizontally by taping.

TIE SKETCH



127