

U.S. PUBLIC LAND SURVEY MONUMENT RECORD - GRANT COUNTY, WI

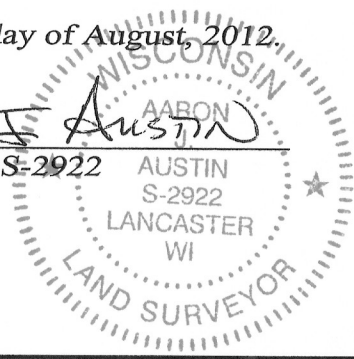
Section 31, Town 8 North Range 1 West, Town of Muscodora

CERTIFICATE:

I, Aaron J. Austin, do hereby certify that the corner location on this record was determined by me and/or under my direct supervision and that this U.S. Public Land Survey Monument Record is correct and complete to the best of my knowledge and belief.

Dated this 30th day of August, 2012.

Aaron J. Austin
 Aaron J. Austin, S-2922



● = CORNER LOCATION

HISTORY OF CORNER ESTABLISHMENT:

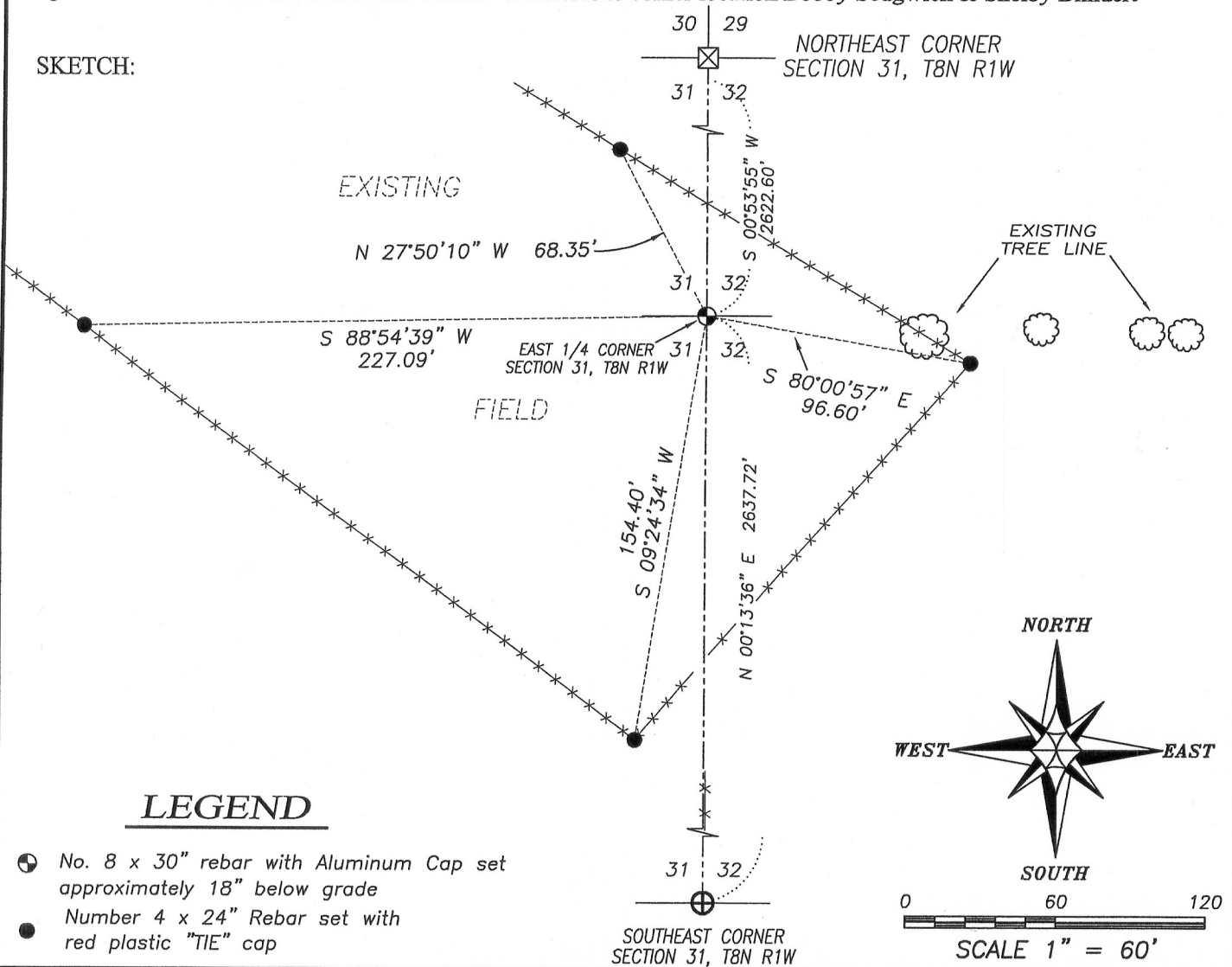
Corner was originally set in March of 1833 by Sylvester Sibley.
 No records were found for this corner.

DESCRIPTION OF CORNER EVIDENCE FOUND:

No evidence of the original corner was found. Corner was reset at a projection of a tree line from the East and a fence line to the South. This corner was occupied in 1940 based upon an aerial photo of the area. I verified it's location with E.D.M. and G.P.S. methods.

DESCRIPTION OF CORNER AND WITNESS MONUMENTS, references and accessories used to perpetuate the original or re-established location of this corner. Witnesses to corner location Bobby Sedgwick & Shelby Blindert

SKETCH:



LEGEND

- No. 8 x 30" rebar with Aluminum Cap set approximately 18" below grade
- Number 4 x 24" Rebar set with red plastic "TIE" cap



4211 HWY 81 E, LANCASTER, WI 53813
 PHONE: 608-723-6363 FAX: 608-723-6702

JOB NO: 12s153
 G:\T8NR2W\27
 H:\TIE\T8NR1W\115

FIELDBOOK: TDSR
 DRAWN BY: AJ AUSTIN
 CREW: BS-SB