

**U.S. PUBLIC LAND SURVEY MONUMENT RECORD - GRANT COUNTY, WI**

Section 31, Town 8 North Range 1 West, Town of Muscodia

**CERTIFICATE:**

I, Aaron J. Austin, do hereby certify that the corner location on this record was determined by me and/or under my direct supervision and that this U.S. Public Land Survey Monument Record is correct and complete to the best of my knowledge and belief.

Dated this 30th day of August, 2012.

*Aaron J. Austin*  
 Aaron J. Austin, S-2922



● = CORNER LOCATION

HISTORY OF CORNER ESTABLISHMENT:

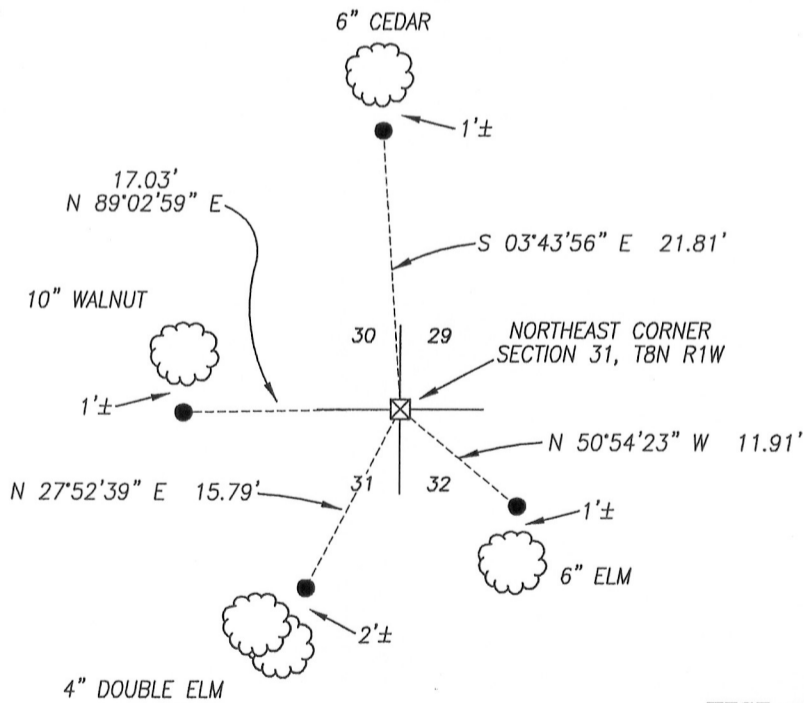
Corner was originally set in March of 1833 by Sylvester Sibley. In May of 1901, Charles Sampson found an original bearing tree and set a Stone at the corner. No other records were found for this corner.

DESCRIPTION OF CORNER EVIDENCE FOUND:

Charles Sampson set several stones as noted on surveys filed in Pages 289, 291 and 292 of Book "D", Grant County Tax Lister's Office. I found 5 other stones set in conjunction with said surveys. I also found a Stone at this location and verified it's location with E.D.M. and G.P.S. methods.

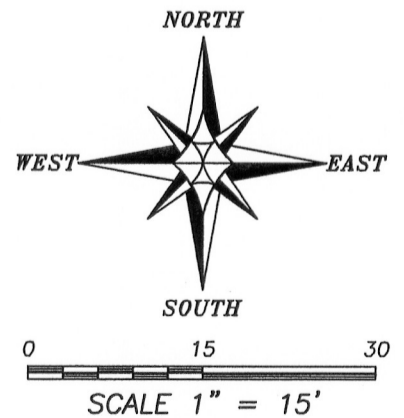
DESCRIPTION OF CORNER AND WITNESS MONUMENTS, references and accessories used to perpetuate the original or re-established location of this corner. Witnesses to corner location Bobby Sedgwick & Shelby Blindert

SKETCH:



**LEGEND**

- ⊗ Stone monument found
- Number 4 x 24" Rebar set with red plastic "TIE" cap



**Austin Engineering LLC**  
 austinengineeringllc.com

4211 HWY 81 E, LANCASTER, WI 53813  
 PHONE: 608-723-6363 FAX: 608-723-6702

JOB NO: 12s153  
 G:\TBNR2W\27  
 H:\TIE\TBNR1W\111

FIELDBOOK: TDSR  
 DRAWN BY: AJ AUSTIN  
 CREW: BS-SB