

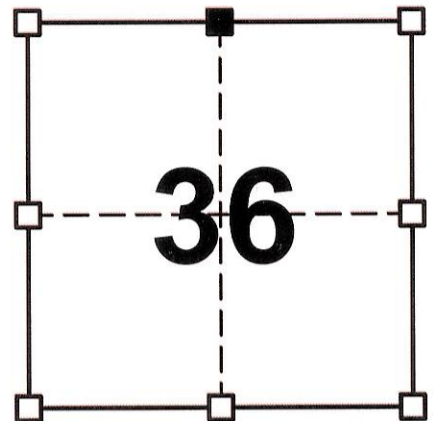
GRANT COUNTY CERTIFIED U.S. PUBLIC LAND SURVEY MONUMENT RECORD

DATUM: NAD 83 (2011) WISCRS	GRANT COUNTY COORDINATES	
CONTROL: COMBINATION OF GPS AND CONVENTIONAL FIELD CONTROL	NORTH	627,643.13'
	EAST	891,164.68'

THE NORTH QUARTER CORNER OF SECTION 36, TOWN 8 NORTH, RANGE 1 WEST, TOWN OF MUSCODA, GRANT COUNTY, WISCONSIN.

(A) IDENTIFY THE CORNER BY REFERENCE TO THE U.S. PUBLIC LAND SURVEY SYSTEM

■ = CORNER MONUMENT RESTORED



SECTION 36
TOWN 8 NORTH
RANGE 1 WEST

WITNESS TO CORNER LOCATION:

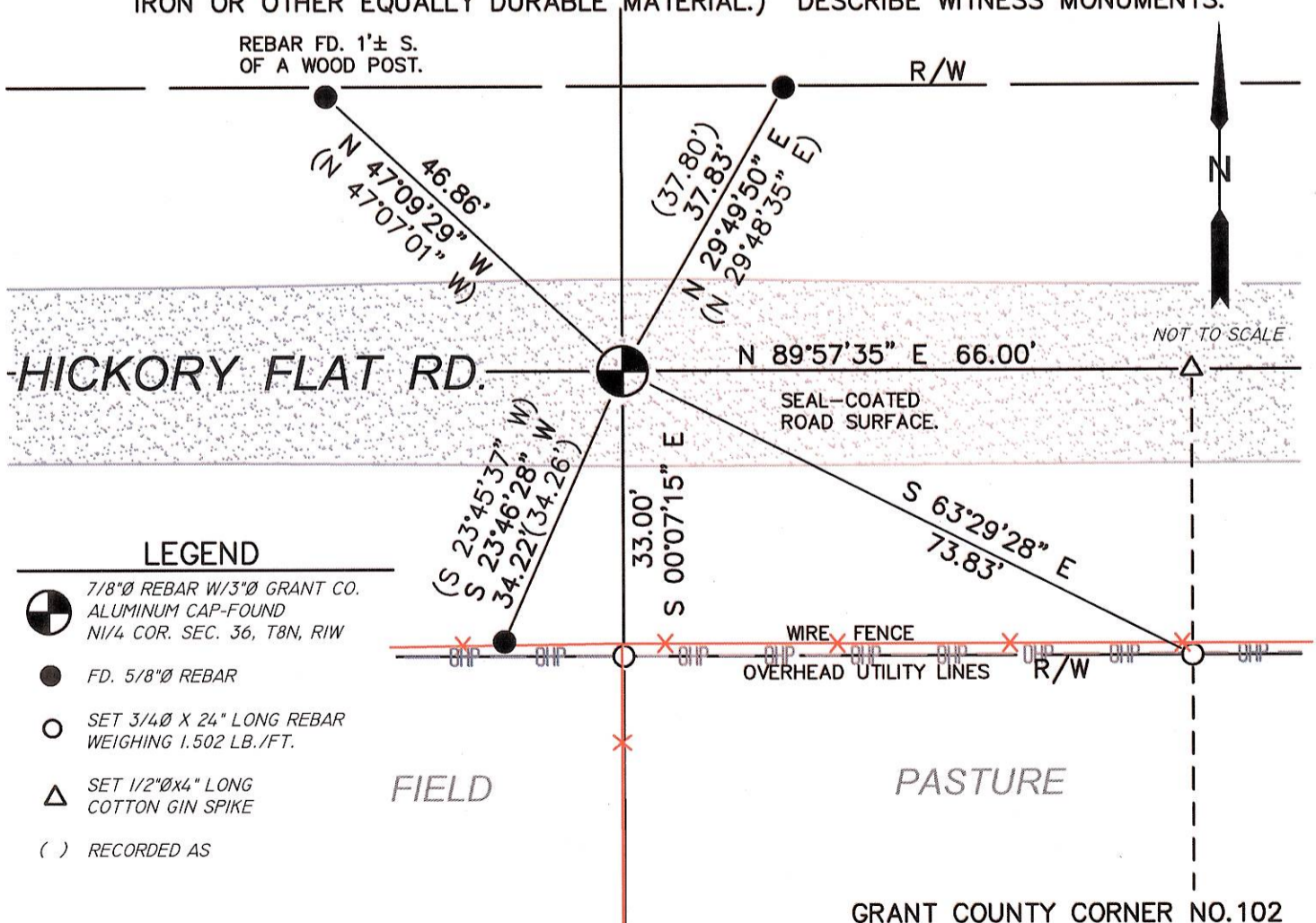
TODD T. RUMMLER

MARK A. MAHONEY

(B) DESCRIBE ANY RECORD EVIDENCE, MONUMENT EVIDENCE, OCCUPATIONAL EVIDENCE, TESTIMONIAL EVIDENCE OR ANY OTHER MATERIAL EVIDENCE YOU CONSIDERED, AND WHETHER THE MONUMENT WAS FOUND OR PLACED.

I FOUND THE 7/8" DIAMETER REBAR WITH 3" DIAMETER GRANT COUNTY ALUMINUM CAP AS SHOWN ON THE TIE SHEET BY LAURENCE E. SCHMIT S-1312 DATED APRIL 4, 2000. I ALSO FOUND THE THREE 5/8" DIA. REBAR REFERENCE MONUMENTS AS SET BY MR. SCHMIT. THE OTHER TWO REFERENCE MONUMENTS WERE JUST NAILS, SO I DID NOT BOTHER LOOKING FOR THOSE. I ACCEPTED THE REBAR WITH ALUMINUM CAP AS THE CORNER, MEASURED TO THE THREE EXISTING REBAR REFERENCE MONUMENTS AND ESTABLISHED ADDITIONAL REFERENCE MONUMENTS AS SHOWN BELOW TO PERPETUATE THE CORNER LOCATION.

(C & D) IN THE PLAN VIEW DRAWING BELOW, PROVIDE REFERENCE TIES TO AT LEAST 4 WITNESS MONUMENTS. (WITNESS MONUMENTS SHALL BE CONCRETE, NATURAL STONE, IRON OR OTHER EQUALLY DURABLE MATERIAL.) DESCRIBE WITNESS MONUMENTS.



LEGEND

- 7/8"Ø REBAR W/3"Ø GRANT CO. ALUMINUM CAP-FOUND N1/4 COR. SEC. 36, T8N, R1W
- FD. 5/8"Ø REBAR
- SET 3/4" X 24" LONG REBAR WEIGHING 1.502 LB./FT.
- SET 1/2"ØX4" LONG COTTON GIN SPIKE
- () RECORDED AS

GRANT COUNTY CORNER NO.102

(E) DESCRIBE ANY MATERIAL DISCREPANCY BETWEEN THE LOCATION OF THE CORNER AS RESTORED OR REESTABLISHED AND THE LOCATION OF THAT CORNER AS PREVIOUSLY RESTORED OR REESTABLISHED BY DISTANCE AND DIRECTION. SHOW THE DISCREPANCY ON THE PLAN VIEW DRAWING UNDER (C), ABOVE. SHOW THE DISTANCES BETWEEN THE CORNER AS PREVIOUSLY RESTORED OR REESTABLISHED AND (1) THE CORNER AS RESTORED OR REESTABLISHED, AND (2) TO AT LEAST 2 OF THE WITNESS MONUMENTS AS SHOWN ON THE DRAWING IN (C), ABOVE.

NONE

(F) WAS THE CORNER RESTORED THROUGH ACCEPTANCE OF (1) AN OBLITERATED EVIDENCE LOCATION, OR (2) A FOUND PERPETUATED LOCATION?

2.) A FOUND PERPETUATED LOCATION

(G & H) WAS THE CORNER REESTABLISHED THROUGH LOST CORNER PROPORTIONATE METHODS? IF SO SHOW THE METHOD, INCLUDING THE DIRECTION AND DISTANCED TO OTHER PUBLIC LAND SURVEY CORNERS USED AS EVIDENCE OR USED FOR PROPORTIONING IN DETERMINING THE CORNER LOCATION.

NO.

AFFIX LAND SURVEYOR SEAL

(I) I, TODD T. RUMMLER, RLS-2443 CERTIFY THAT THE CORNER LOCATION SHOWN ON THIS RECORD WAS DETERMINED BY ME OR UNDER MY DIRECTION AND CONTROL AND THAT THIS U.S. PUBLIC LAND SURVEY MONUMENT RECORD IS CORRECT AND COMPLETE TO THE BEST OF MY KNOWLEDGE AND BELIEF.



OCTOBER 25, 2016

SIGNATURE

DATE

U.S. PUBLIC LAND SURVEY MONUMENT RECORD

(As Required By s. A-E 7.08, WI Adm. Code)

History of original corner establishment and subsequent restorations and description of any record, monument, occupational, testimonial or other evidence considered:

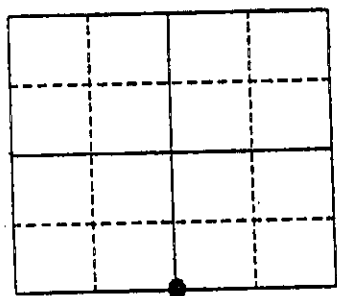
HISTORY #S 6R16. GOVT SURVEY. FOUND RINGSHANK NAILS OF UNKNOWN ORIGIN, \perp OF RIDGE ROAD; \perp FENCE LINE SOUTH IN VICINITY OF CORNER AS OCCUPATIONAL EVIDENCE. SET CORNER LOCATION ON STRAIGHT LINE BETWEEN SW & SE SECTION CORNER ADJUSTED TO MEET RING SHANK NAIL & FENCE SOUTH AFTER EDM & GPS TRAVERSE OF SECTION 25 & OTHER ADJACENT SECTIONS FOR PHYSICAL EVIDENCE
 Corner was: (Check All That Apply)

- Restored through acceptance of an obliterated evidence location
- Restored through acceptance of a found perpetuated location
- Considered a lost corner and reestablished through lost corner proportionate methods (include a plan view drawing showing distances and directions to other Public Land Survey Corners used for proportioning and determining the corner location)
- Restored or reestablished in a location that differs from a previous restoration or reestablishment (include a plan view drawing and indicate what was set and/or found)

Describe the monument and accessories used to perpetuate the location of this corner. (Include a plan view drawing and indicate what was set and/or found)

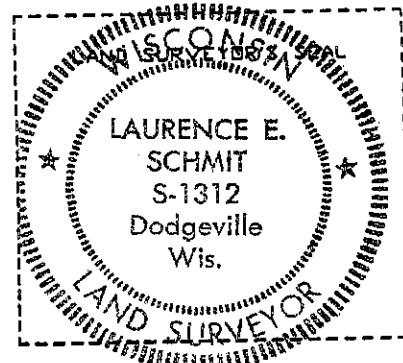
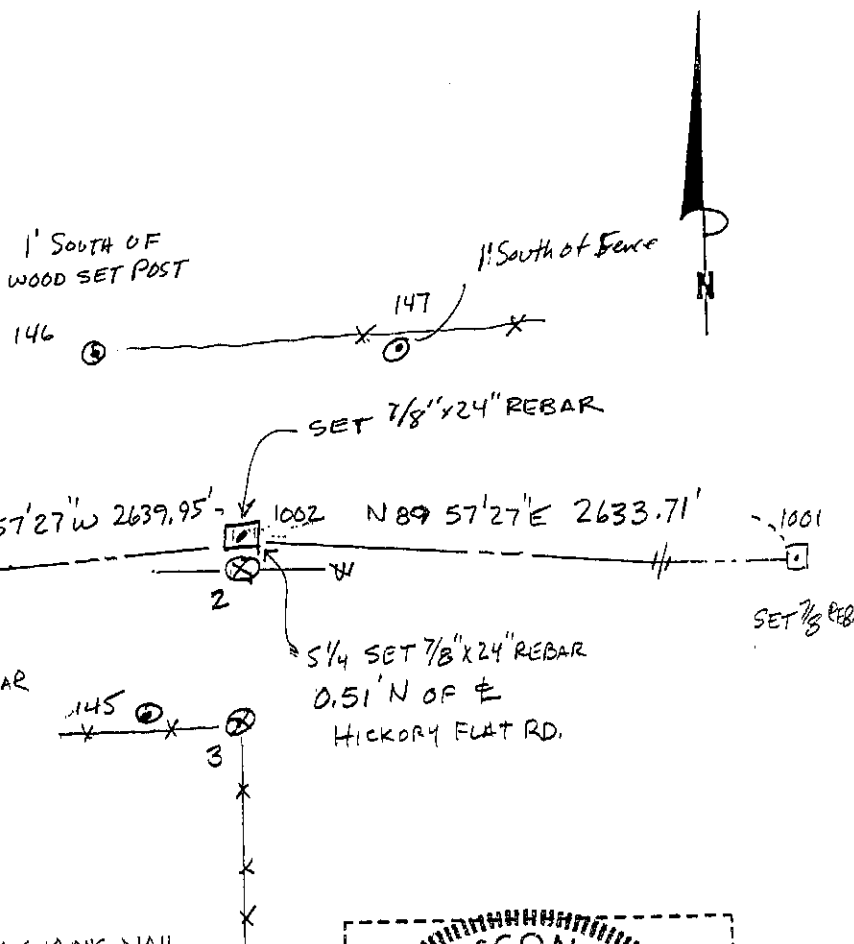
1002-2 S0°07'E 0.51'
 1002-3 S0°07'07"E 31.49'
 1002-145 S23°45'37"W 34.26'
 1002-146 N47°07'11"W 46.86'
 1002-147 N29°48'35"E 37.80'

The S1/4
 corner of Section 25
 T. 8 N., R. 1W E.,
GRANT County, Wisconsin
 Job ID: 99S-118
 Book # 99-4 p. 33



● = Location of Corner

- LEGEND
- ⊗ FOUND RINGSHANK NAIL
 - SECTION CORNER AS DESCRIBED
 - FENCE
 - ⊙ SET 5/8" REBAR TIE



I, LAURENCE E. SCHMIT
 (Type or print name) certify that the corner location shown on this record was determined by me or under my direction and control and that this U.S. Public Land Survey Monument Record is correct and complete to the best of my knowledge and belief.

Laurence E. Schmit 4-4-2002

Signature

Date

Index No. 102