

U.S. PUBLIC LAND SURVEY MONUMENT RECORD – GRANT COUNTY, WI

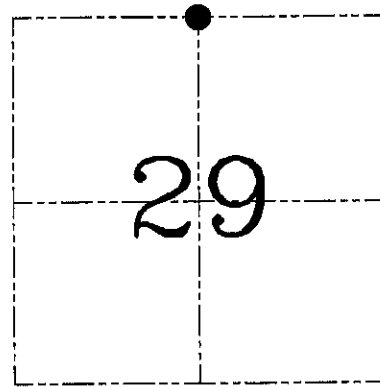
Section 29, Town 8 North Range 1 West, Town of Muscoda

CERTIFICATE

I, Larry L. Austin, do hereby certify that the corner location on this record was determined by me and/or under my direct supervision and that this U.S. public land survey monument record is correct and complete to the best of my knowledge and belief.

Dated this 10th day of June, 2004

Larry L. Austin
 Larry L. Austin S-1903



● = CORNER LOCATION

HISTORY OF CORNER ESTABLISHMENT

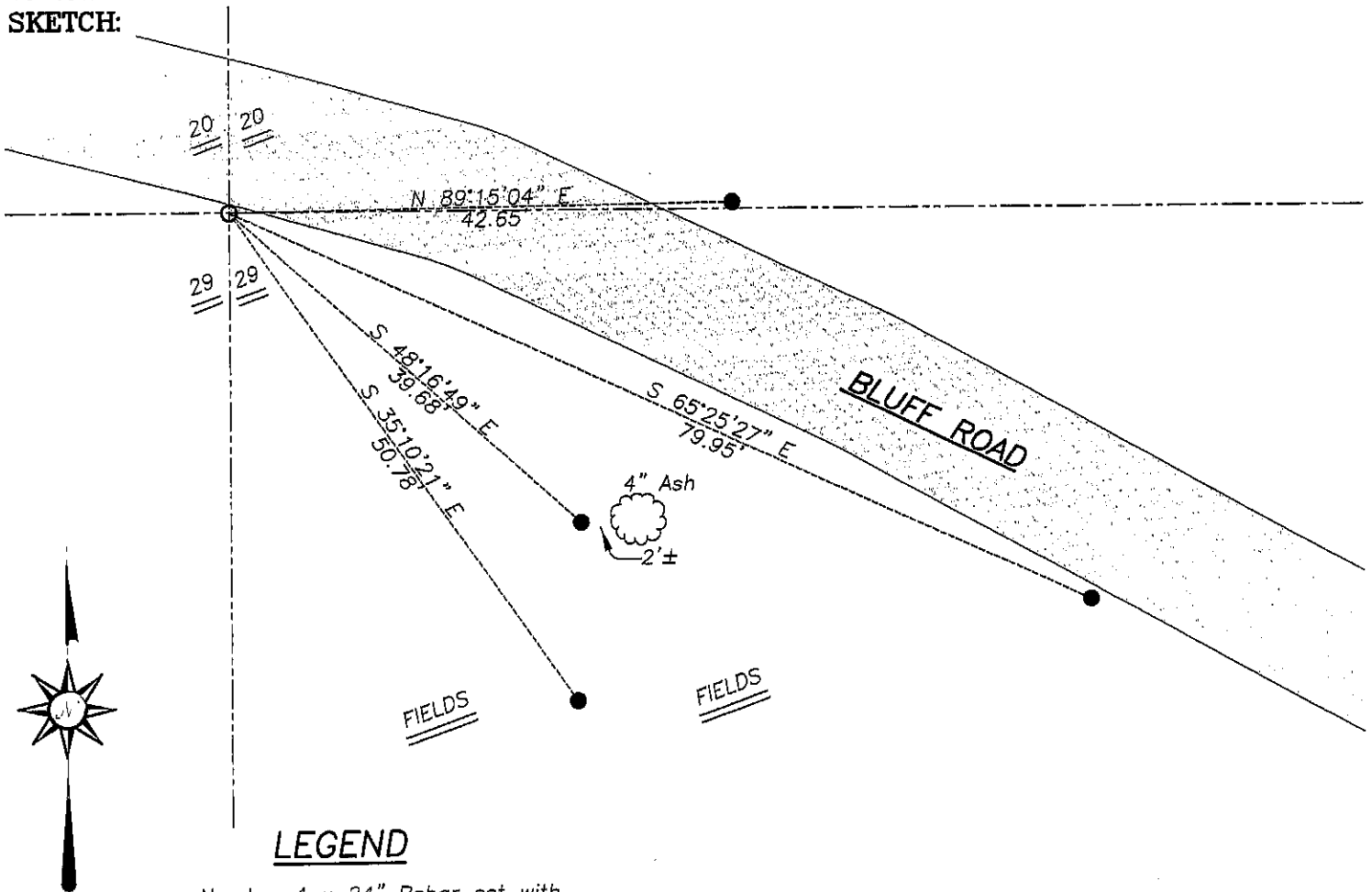
Corner was originally set in 1833 by Sibley.
 No other records of the corner were found.

DESCRIPTION OF CORNER EVIDENCE FOUND

I found a #6 Iron Bar at this location and accepted it after and EDM/GPS traverse of the area.

DESCRIPTION OF CORNER AND WITNESS MONUMENTS, references and accessories used to perpetuate the original or re-established location of this corner. Witnesses to corner location Bobby Sedgwick & Shane Austin & Brad Hazen

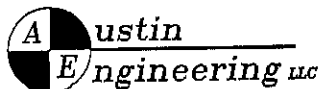
SKETCH:



LEGEND

- Number 4 x 24" Rebar set with red plastic "TIE" cap
- No. 6 rebar found

SKETCH NOT TO SCALE



4211 HWY 81 E, LANCASTER, WI 53813
 PHONE 608-723-6363 FAX 608-723-6702

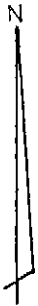
JOB NUMBER 04S024
 FIELDBOOK: TSDR, 2332
 G:\T8NR1W\29
 H:\TIE\T8NR1W\90

DRAWN BY: BJ HAZEN
 APPROVED: LL AUSTIN

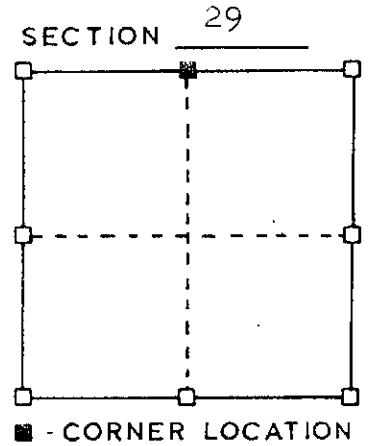
Muscoda T.

RECORD OF CORNER MONUMENTATION TIE SHEET

NORTH $\frac{1}{4}$ CORNER, SECTION 29, T. 8 N., R. 1 W
GRANT COUNTY, WISCONSIN



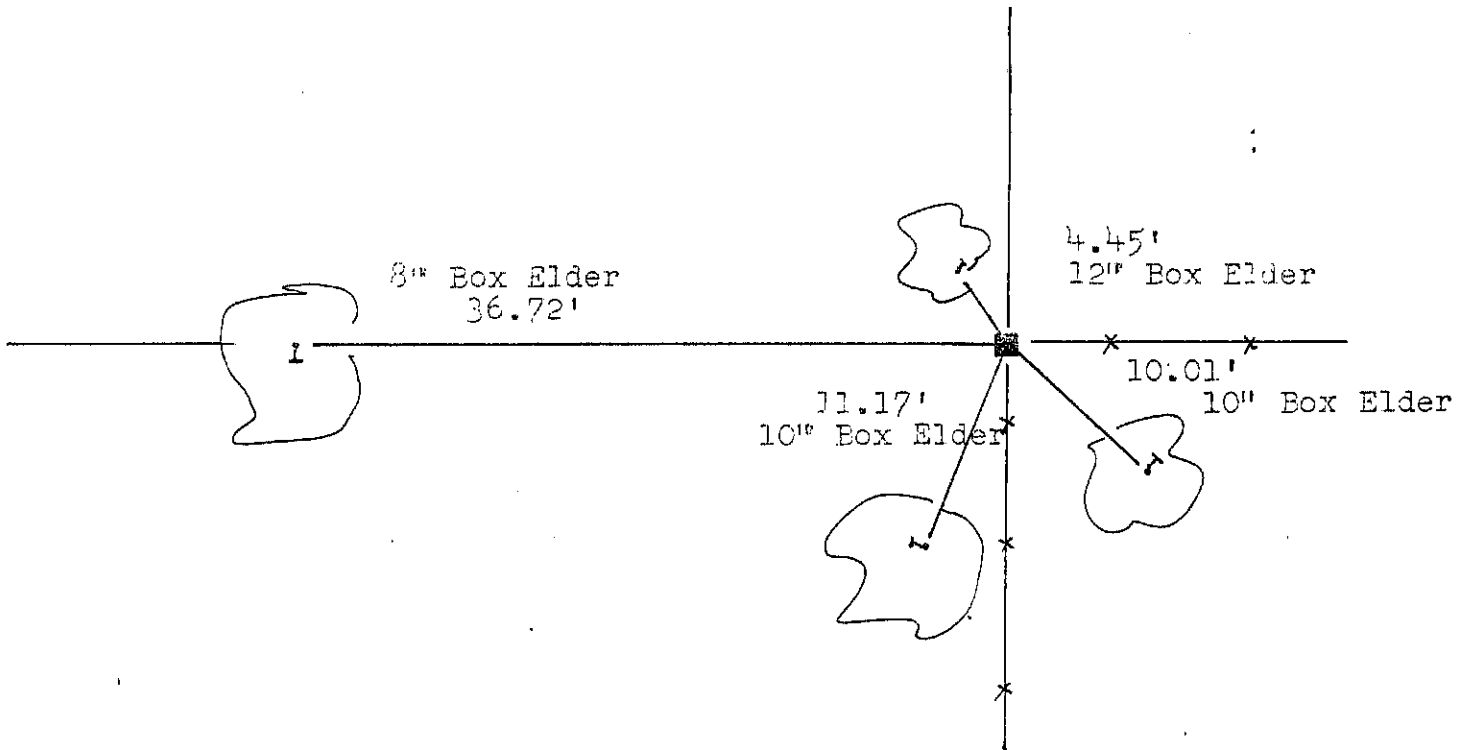
SKETCH OF CORNER
REFERENCE TIES



TYPE OF MONUMENT:

1" iron pipe located

Trees referenced with 60 penny spikes

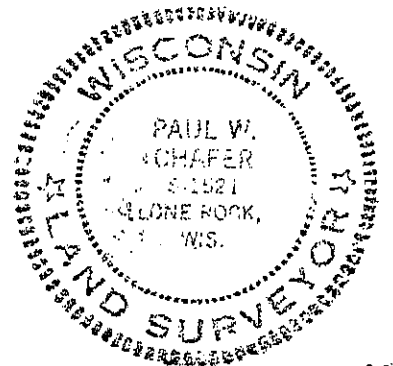


SURVEYOR'S CERTIFICATE
STATE OF WISCONSIN)
Grant County)

I HEREBY CERTIFY THAT while doing survey work in the NW $\frac{1}{4}$ of section 29, I did locate a 1" iron pipe located at the junction of existing fence lines. With the survey work done in the northwest quarter, this location fit well and I accepted this to be the corner to the best of knowledge and belief to be correct.

DATED THIS 1986 DAY OF

Paul W. Chafer
REGISTERED LAND SURVEYOR
S-1321



P-910