

GRANT COUNTY

CERTIFIED U.S. PUBLIC LAND SURVEY MONUMENT RECORD

DATUM: NAD 83 (2007) WISCRS	GRANT COUNTY COORDINATES	
CONTROL: COMBINATION OF GPS AND CONVENTIONAL FIELD CONTROL	NORTH	632921.00'
	EAST	872744.30'

*THE SOUTHWEST CORNER OF SECTION 21,
TOWN 8 NORTH, RANGE 1 WEST, TOWN OF
MUSCODA, GRANT COUNTY, WISCONSIN.*

(A) IDENTIFY THE CORNER BY REFERENCE
TO THE U.S. PUBLIC LAND SURVEY SYSTEM

■ = CORNER MONUMENT RESTORED

WITNESS TO CORNER LOCATION:

TODD T. RUMMLER



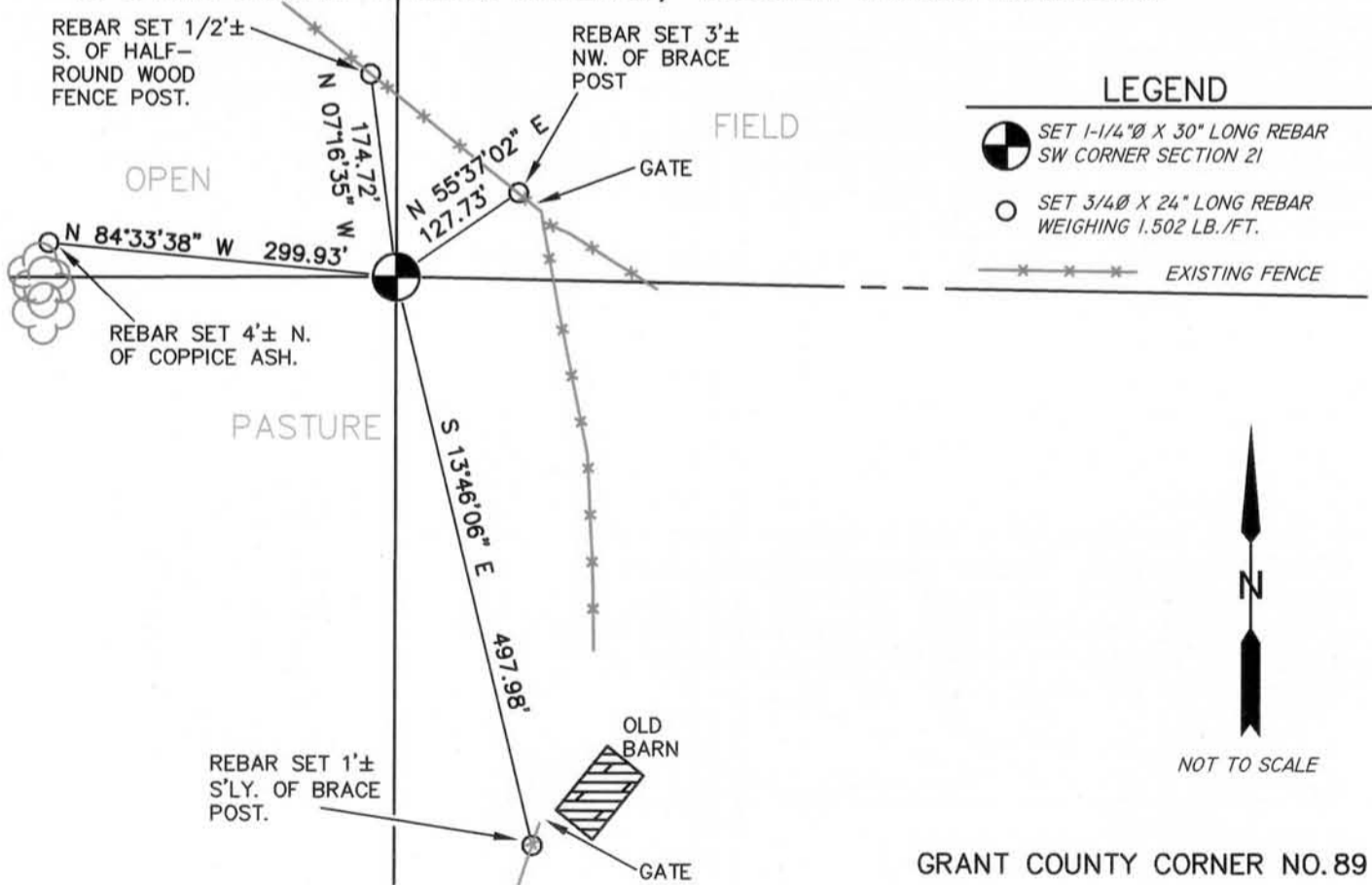
SECTION 21
TOWN 8 NORTH
RANGE 1 WEST

(B) DESCRIBE ANY RECORD EVIDENCE, MONUMENT EVIDENCE, OCCUPATIONAL EVIDENCE,
TESTIMONIAL EVIDENCE OR ANY OTHER MATERIAL EVIDENCE YOU CONSIDERED, AND
WHETHER THE MONUMENT WAS FOUND OR PLACED.

*CHARLES SAMPSON WORKED IN SECTIONS 21 AND 28 IN APRIL, 1892 AND THIS WORK IS
DOCUMENTED IN SURVEY BOOK D, PAGES 207 AND 208. SAMPSON NOTES A "ROCK ESTABLISHED
FROM FOUR NEAREST ADJACENT CORNERS" AT THE SW CORNER OF SECTION 21. SAMPSON ALSO
TOOK BEARING TREES AT THE W 1/16TH OF THE NW1/4 OF SECTION 28 (BURR OAK 12", S73°E, 22
LINKS & BURR OAK 10" N84-1/2°W, 26-1/2 LINKS). THE SECOND TREE STILL EXISTS AND IS NOW
ABOUT 30" IN DIAMETER. I DETERMINED THE LOCATION OF THE W1/16TH OF THE NW1/4 FROM
THIS TREE AND DOUBLED UP FROM THE STONE AT THE W 1/4 CORNER AND COMPUTED A
LOCATION FOR THE SW CORNER OF SECTION 21. I THEN LOOKED FOR THE BEARING TREE
SAMPSON NOTES*

*[** CONTINUED ON SHEET 2**]*

(C) IN THE PLAN VIEW DRAWING BELOW, PROVIDE REFERENCE TIES TO AT LEAST 4 WITNESS
MONUMENTS OR, IF THE LOCATION IS WITHIN A MUNICIPALITY, TO AT LEAST 2 WITNESS
MONUMENTS. (WITNESS MONUMENTS SHALL BE MADE ON CONCRETE, NATURAL STONE, IRON,
OR OTHER EQUALLY DURABLE MATERIAL.) DESCRIBE WITNESS MONUMENTS.



GRANT COUNTY CORNER NO. 89

MAR 2 1 2013

- (D) DESCRIBE ANY MATERIAL DISCREPANCY BETWEEN THE LOCATION OF THE CORNER AS RESTORED OR REESTABLISHED AND THE LOCATION OF THAT CORNER AS PREVIOUSLY RESTORED OR REESTABLISHED BY DISTANCE AND DIRECTION. SHOW THE DISCREPANCY ON THE PLAN VIEW DRAWING UNDER (C), ABOVE. SHOW THE DISTANCES BETWEEN THE CORNER AS PREVIOUSLY RESTORED OR REESTABLISHED AND (1) THE CORNER AS RESTORED OR REESTABLISHED, AND (2) TO AT LEAST 2 OF THE WITNESS MONUMENTS AS SHOWN ON THE DRAWING IN (C), ABOVE.

NONE

- (E) WAS THE CORNER RESTORED THROUGH ACCEPTANCE OF (1) AN OBLITERATED EVIDENCE LOCATION, OR (2) A FOUND PERPETUATED LOCATION?

2.) A FOUND PERPETUATED LOCATION

- (F & G) WAS THE CORNER REESTABLISHED THROUGH LOST CORNER PROPORTIONATE METHODS? IF SO SHOW THE METHOD, INCLUDING THE DIRECTION AND DISTANCED TO OTHER PUBLIC LAND SURVEY CORNERS USED AS EVIDENCE OR USED FOR PROPORTIONING IN DETERMINING THE CORNER LOCATION.

NO.

[**CONTINUED FROM SHEET 1**]

AT THE S1/8TH OF THE SW1/4 OF SECTION 21 (BURR OAK 12", WEST 8 LINKS). THIS TREE ALSO STILL EXISTS AND IS NOW ABOUT 20" IN DIAMETER. I DETERMINED A LOCATION FOR THE S 1/8TH FROM THIS TREE. I THEN DOUBLED UP FROM THE REBAR AT THE S1/4 CORNER OF SECTION 21 AND COMPUTED ANOTHER LOCATION FOR THE SW CORNER. THE TWO LOCATIONS FOR THE SW CORNER THUSLY COMPUTED WERE ONLY ABOUT 1' APART, SO I AVERAGED THE TWO LOCATIONS. I THEN STAKED OUT TO THIS LOCATION AND PROBED AROUND LOOKING FOR SAMPSONS "ROCK". THIS LOCATION FALLS IN AN OPEN PASTURE, THE AREA APPEARS TO HAVE BEEN CONTINUOUSLY FARMED IN THE PAST, AND THE SAME FAMILY HAS OWNED ON ALL SIDES OF THE CORNER FOR A LONG PERIOD OF TIME. I DID NOT FIND ANY ADDITIONAL PHYSICAL EVIDENCE OF THE CORNER, SO I DROVE A 1-1/4" X 30" REBAR AT THE COMPUTED LOCATION AND SET REFERENCE TIES TO PERPETUATE THE CORNER LOCATION.

AFFIX LAND SURVEYOR SEAL

- (H) I, TODD T. RUMMLER, RLS-2443 CERTIFY THAT THE CORNER LOCATION SHOWN ON THIS RECORD WAS DETERMINED BY ME OR UNDER MY DIRECTION AND CONTROL AND THAT THIS U.S. PUBLIC LAND SURVEY MONUMENT RECORD IS CORRECT AND COMPLETE TO THE BEST OF MY KNOWLEDGE AND BELIEF.



SIGNATURE

MARCH 19, 2013

DATE

