

# U.S. PUBLIC LAND SURVEY MONUMENT RECORD

(AS REQUIRED BY s.A-E 7.08, WI. ADM. CODE)

HISTORY OF ORIGINAL CORNER ESTABLISHMENT AND SUBSEQUENT RESTORATIONS AND DESCRIPTION OF ANY RECORD, MONUMENT, OCCUPATION, TESTIMONIAL OR OTHER EVIDENCE CONSIDERED

NO RECORD FOUND ON FILE. I SET A 7/8" REBAR AT A FENCE CORNER.

BEARING REFERENCE IS GRANT COUNTY COORDINATE SYSTEM NAD 83(91)

CORNER WAS: (CHECK ALL THAT APPLY)

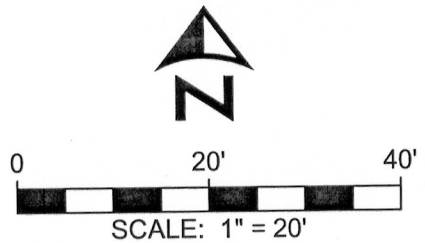
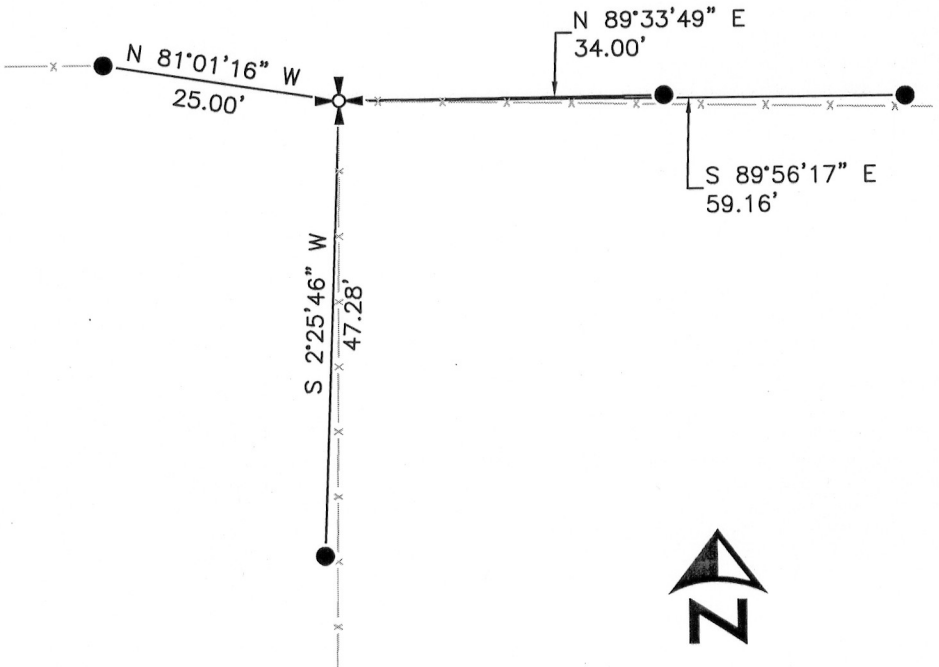
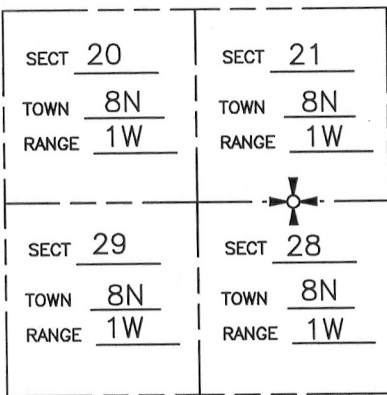
- RESTORED THROUGH ACCEPTANCE OF AN OBLITERATED EVIDENCE LOCATION
  - RESTORED THROUGH ACCEPTANCE OF A FOUND PERPETUATED LOCATION
  - CONSIDERED A LOST CORNER AND REESTABLISHED THROUGH LOST CORNER PROPORTIONATE METHODS (INCLUDE A PLAN VIEW DRAWING SHOWING BEARING & DISTANCE TO OTHER PUBLIC LAND SURVEY CORNERS USED FOR PROPORTIONING AND DETERMINING THE CORNER LOCATION)
  - RESTORED OR REESTABLISHED IN A LOCATION THAT DIFFERS FROM A PREVIOUS RESTORATION OR REESTABLISHMENT (INCLUDE A PLAN VIEW DRAWING AND INDICATE WHAT WAS SET AND/OR FOUND)
- Describe the monument and accessories used to perpetuate the location of the corner. (include a plan view drawing and indicated what was set and/or found)

**LEGEND:**

● 70D NAIL SET

⊕ SECTION CORNER  
7/8" REBAR SET

—x— EXISTING FENCELINE



● = LOCATION OF CORNER

THE S1/4 COR. OF SECT 21 T 8N , R 1W

THE \_\_\_\_\_ COR. OF SECT 20 T 8N , R 1W

THE N1/4 COR. OF SECT 28 T 8N , R 1W

THE \_\_\_\_\_ COR. OF SECT 29 T 8N , R 1W

\_\_\_\_\_ COUNTY, WISCONSIN

JOB ID: 1204101B

I, MICHAEL G. ROCHON, CERTIFY THAT THE CORNER LOCATION SHOWN ON THIS RECORD WAS DETERMINED BY ME OR UNDER MY DIRECTION AND CONTROL AND THAT THIS U.S. PUBLIC LAND SURVEY MONUMENT RECORD IS CORRECT AND COMPLETE TO THE BEST OF MY KNOWLEDGE AND BELIEF.



LAND SURVEYORS SEAL

*Michael G. Rochon*  
\_\_\_\_\_  
SIGNATURE

8/9/12  
\_\_\_\_\_  
DATE:

INDEX NUMBER 88

SEP 14 2012