

81080

GRANT COUNTY

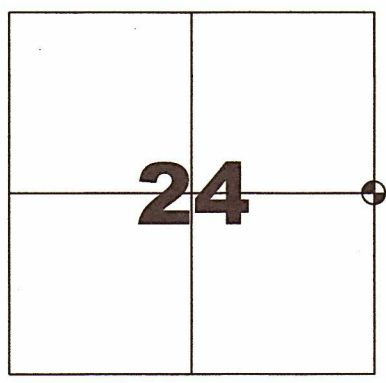
CERTIFIED U.S. PUBLIC LAND SURVEY MONUMENT RECORD

INSTRUCTIONS: THIS RECORD SHALL SHOW THE LOCATION OF THE CORNER AND SHALL INCLUDE ALL OF THE FOLLOWING ELEMENTS (A-1)

(A) IDENTIFY THE CORNER BY REFERENCE TO THE U.S. PUBLIC LAND SURVEY SYSTEM

EAST QUARTER CORNER SECTION 24, T8N, R1W

⊕ = CORNER MONUMENT RECOVERED -
3/4" Dia. Iron Rebar found
WITNESSES TO CORNER LOCATION
1) SEAN M. WALSH



EAST QUARTER CORNER

SECTION 24, TOWN 8 NORTH, RANGE 1 WEST

TOWN OF MUSCODA, GRANT COUNTY, WISCONSIN

MEASUREMENTS BASED UPON TRADITIONAL TOTAL STATION
MEASUREMENTS FROM GPS CONTROL

BASIS OF BEARINGS AND ORIENTAITON
WCCRS GRANT COUNTY, NAD 83(2011)

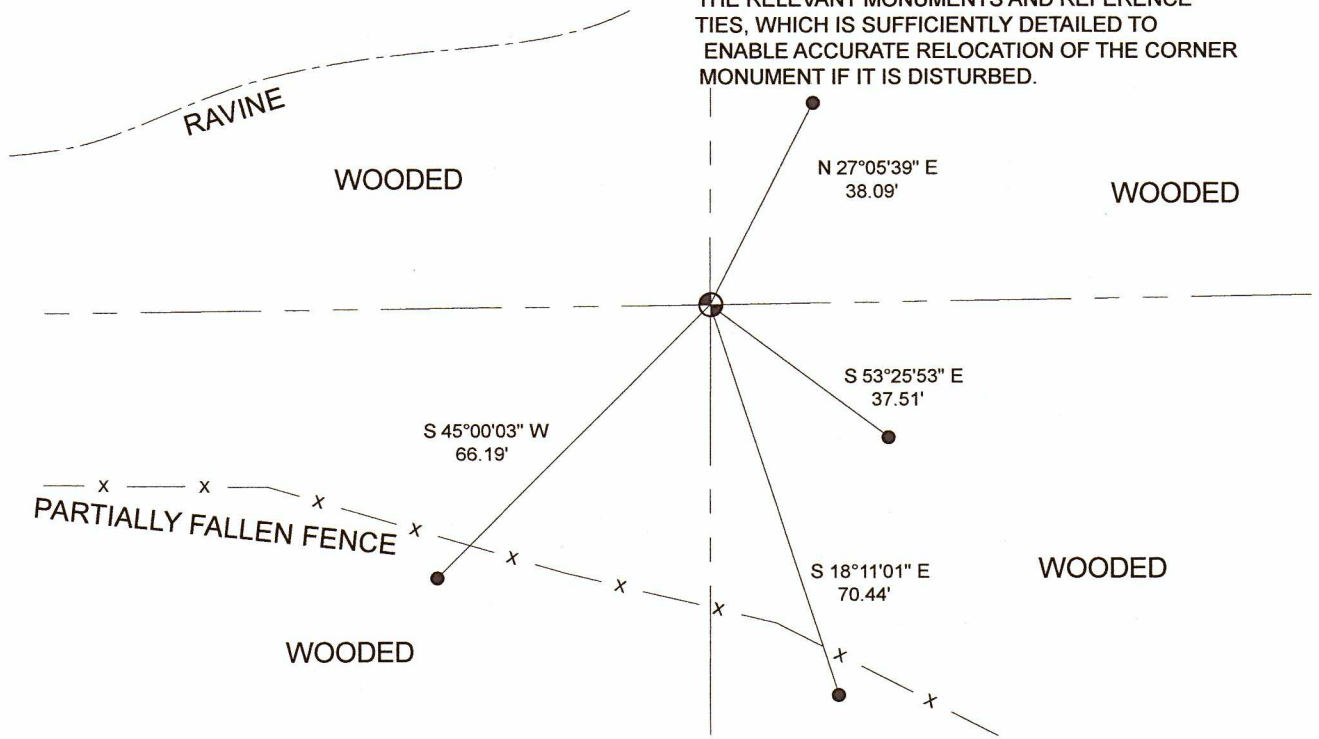
(B) A DESCRIPTION OF ANY RECORD EVIDENCE, MONUMENT EVIDENCE, OCCUPATIONAL EVIDENCE, TESTIMONIAL EVIDENCE OR ANY OTHER MATERIAL EVIDENCE CONSIDERED BY THE PROFESSIONAL LAND SURVEYOR AND WHETHER THE MONUMENT WAS FOUND OR PLACED.

ON APRIL 20, 2022, IN CONJUNCTION WITH A PRIVATE SURVEY FOR AMEEN TALEB, LOCATED IN PART OF SECTION 24, T8N, R1W, TOWN OF MUSCODA, I LOCATED A 3/4" DIAMETER IRON REBAR AT THIS LOCATION. THE REBAR WAS PREVIOUSLY SET BY JOHN HALVERSON AND MOST RECENTLY PERPETUATED BY STANLEY KING PER GOVERNMENT CORNER RECORD FILED IN IOWA COUNTY. THE WITNESS TIES SHOWN ON THE GOV'T CORNER RECORD PREPARED BY MR. KING WERE FOUND TO BE DISTURBED OR AT QUITE LONG DISTANCES AWAY. I ACCEPTED THE CORNER LOCATION AS THE BEST AVAILABLE EVIDENCE AND ADDED THE WITNESS TIES SHOWN BELOW TO PERPETUATE THE CORNER LOCATION.

(C) IN THE PLAN VIEW DRAWING BELOW, PROVIDE REFERENCE TO AT LEAST 4 WITNESS MONUMENTS OR, IF THE LOCATION IS WITHIN A MUNICIPALITY, TO AT LEAST 2 WITNESS MONUMENTS. (WITNESS MONUMENTS SHALL BE MADE OF CONCRETE, NATURAL STONE, IRON OR OTHER EQUALLY DURABLE MATERIAL) DESCRIBE WITNESS MONUMENTS

DRAWING NOT TO SCALE

(D) SHOW A PLAN VIEW DRAWING, DEPICTING THE RELEVANT MONUMENTS AND REFERENCE TIES, WHICH IS SUFFICIENTLY DETAILED TO ENABLE ACCURATE RELOCATION OF THE CORNER MONUMENT IF IT IS DISTURBED.



LEGEND

- ⊕ Found 3/4" dia. iron rebar
- 3/4" dia x 18" iron rebar set as witness tie
- x - Existing fence line

81080

GRANT COUNTY
CERTIFIED U.S. PUBLIC LAND SURVEY MONUMENT RECORD

RECOVERY PROCEDURES:

(E) A DESCRIPTION OF ANY RECORD EVIDENCE, MONUMENT EVIDENCE, OCCUPATIONAL EVIDENCE, TESTIMONIAL EVIDENCE OR ANY OTHER MATERIAL EVIDENCE CONSIDERED BY THE SURVEYOR, AND WHETHER THE MONUMENT WAS FOUND OR PLACED;

SEE OPPOSITE SIDE

(F) WHETHER THE CORNER WAS RESTORED THROUGH ACCEPTANCE OF AN OBLITERATED EVIDENCE LOCATION OR A FOUND PERPETUATED LOCATION; A FOUND PERPETUATED LOCATION

(G) WHETHER THE CORNER WAS REESTABLISHED THROUGH LOST-CORNER PROPORTIONATE METHODS; IF SO, SHOW THE DIRECTIONS AND DISTANCES TO OTHER PUBLIC LAND SURVEY CORNERS WHICH WERE USED AS EVIDENCE OR USED FOR PROPORTIONING IN DETERMINING THE CORNER LOCATION;

N/A

7.08 (3) (h)

N/A

SURVEYOR'S CERTIFICATE: CHAPTER 7.08 (3) (I)

THE UNDERSIGNED HEREBY CERTIFIES THAT THE U.S. PUBLIC LAND SURVEY MONUMENT RECORD SHOWN WAS DETERMINED BY THEM OR UNDER THEIR DIRECTION AND IS CORRECT AND COMPLETE TO THE BEST OF THEIR KNOWLEDGE AND BELIEF.



[Handwritten Signature]

6/2/2022

DATE CERTIFIED