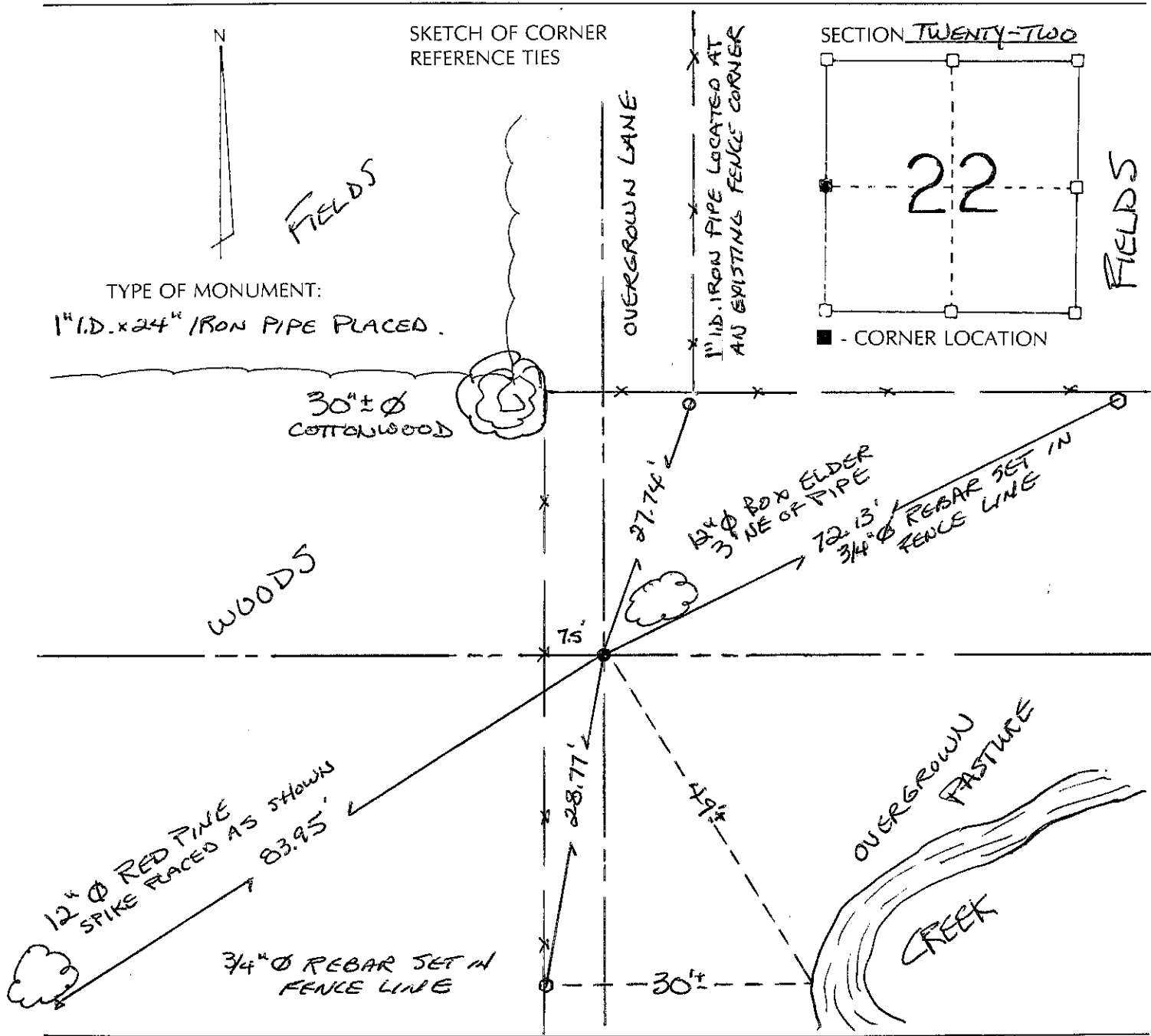


RECORD OF CORNER MONUMENTATION

WY4 CORNER SECTION 22 TOWNSHIP 8 N RANGE 1 WEST
GRANT COUNTY, WISCONSIN

STATE PLANE COORDINATES OF _____
(Y) NORTH _____ ELEVATION _____
(X) EAST _____

HORIZONTAL DATUM: WISCONSIN STATE PLANE COORDINATE SYSTEM, SOUTH ZONE



SURVEYOR'S CERTIFICATE (STATE OF WISCONSIN)

I HEREBY CERTIFY THAT DURING THE PERFORMANCE OF A SURVEY FOR THOMAS MALMGREN ON OR ABOUT JUNE 16, 2003, WE VIA GPS AND TOTAL STATION DID DETERMINE THE LOCATION OF THE WY4 CORNER AND SET SAID CORNER ON LINE AND EQUIDISTANT OF THE NW AND SW CORNERS, TIED AS SHOWN FOR PERPETUATION.

DATED THIS 15th DAY OF January 2004.

Terry L. Cornell
REGISTERED LAND SURVEYOR
S-1905

