

GRANT COUNTY CERTIFIED U.S. PUBLIC LAND SURVEY MONUMENT RECORD

DATUM: NAD 83 (2007) WISCRS	GRANT COUNTY COORDINATES	
CONTROL: COMBINATION OF GPS AND CONVENTIONAL FIELD CONTROL	NORTH	635542.80'
	EAST	872755.24'

*THE WEST QUARTER CORNER OF SECTION 21,
TOWN 8 NORTH, RANGE 1 WEST, TOWN OF
MUSCODA, GRANT COUNTY, WISCONSIN.*

(A) IDENTIFY THE CORNER BY REFERENCE
TO THE U.S. PUBLIC LAND SURVEY SYSTEM

■ = CORNER MONUMENT RESTORED

WITNESS TO CORNER LOCATION:

TODD T. RUMMLER

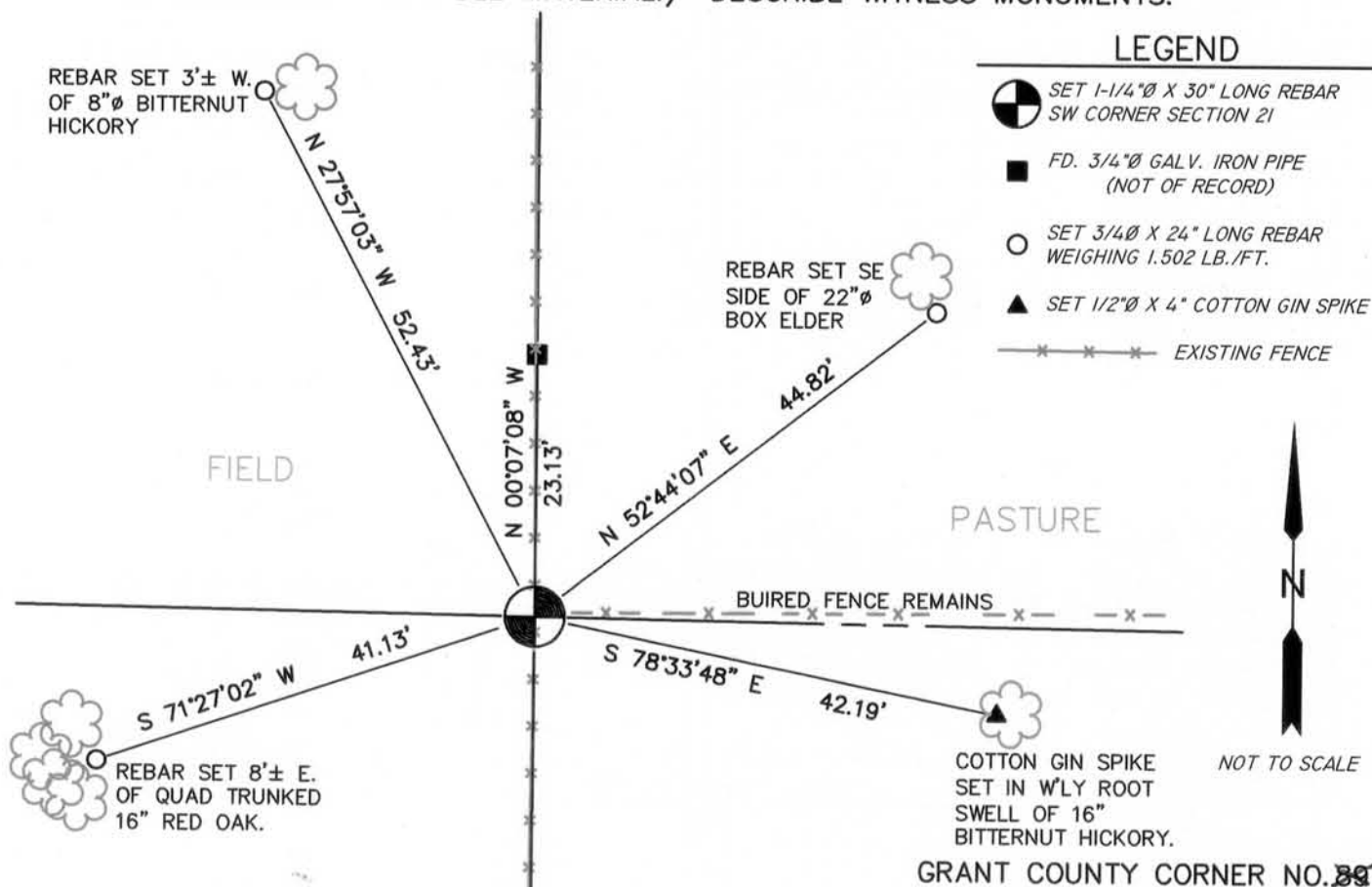


SECTION 21
TOWN 8 NORTH
RANGE 1 WEST

(B) DESCRIBE ANY RECORD EVIDENCE, MONUMENT EVIDENCE, OCCUPATIONAL EVIDENCE,
TESTIMONIAL EVIDENCE OR ANY OTHER MATERIAL EVIDENCE YOU CONSIDERED, AND
WHETHER THE MONUMENT WAS FOUND OR PLACED.

CHARLES SAMPSON WORKED IN SECTIONS 21 AND 28 IN APRIL, 1892 AND THIS WORK IS DOCUMENTED IN SURVEY BOOK D, PAGES 207 AND 208. SAMPSON NOTES "ESTABLISHED FROM SURVEY OF WHOLE SECTION" AT THIS CORNER. SAMPSON ALSO TOOK TWO BEARING TREES AT THIS CORNER (DOUBLE BLACK OAK 10", S40°E, 3.31-1/2 CHAINS & BLACK OAK 12", S27-1/2°E, 3.57 CHAINS). I SEARCHED FOR THESE TREES BUT THEY NO LONGER EXIST. SAMPSON APPARENTLY PLACED THIS CORNER AT THE MID-POINT OF A LINE BETWEEN THE SOUTHWEST AND NORTHWEST CORNERS OF THE SECTION. NEAREST AND BEST PHYSICAL EVIDENCE OF THE CORNER LOCATION IS A LONG-STANDING FENCE LINE RUNNING NORTH AND SOUTH AND BURIED FENCE REMAINS GOING EAST. I SET THE CORNER MONUMENT AT THE INTERSECTION OF THE FENCE LINE AND FENCE REMAINS AND SET REFERENCE TIES TO PERPETUATE THE CORNER LOCATION AS SHOWN BELOW.

(C) IN THE PLAN VIEW DRAWING BELOW, PROVIDE REFERENCE TIES TO AT LEAST 4 WITNESS
MONUMENTS OR, IF THE LOCATION IS WITHIN A MUNICIPALITY, TO AT LEAST 2 WITNESS
MONUMENTS. (WITNESS MONUMENTS SHALL BE MADE ON CONCRETE, NATURAL STONE, IRON,
OR OTHER EQUALLY DURABLE MATERIAL.) DESCRIBE WITNESS MONUMENTS.



GRANT COUNTY CORNER NO. 39

76

MAR 2 1 2013

- (D) DESCRIBE ANY MATERIAL DISCREPANCY BETWEEN THE LOCATION OF THE CORNER AS RESTORED OR REESTABLISHED AND THE LOCATION OF THAT CORNER AS PREVIOUSLY RESTORED OR REESTABLISHED BY DISTANCE AND DIRECTION. SHOW THE DISCREPANCY ON THE PLAN VIEW DRAWING UNDER (C), ABOVE. SHOW THE DISTANCES BETWEEN THE CORNER AS PREVIOUSLY RESTORED OR REESTABLISHED AND (1) THE CORNER AS RESTORED OR REESTABLISHED, AND (2) TO AT LEAST 2 OF THE WITNESS MONUMENTS AS SHOWN ON THE DRAWING IN (C), ABOVE.

NONE

- (E) WAS THE CORNER RESTORED THROUGH ACCEPTANCE OF (1) AN OBLITERATED EVIDENCE LOCATION, OR (2) A FOUND PERPETUATED LOCATION?

2.) A FOUND PERPETUATED LOCATION

- (F & G) WAS THE CORNER REESTABLISHED THROUGH LOST CORNER PROPORTIONATE METHODS? IF SO SHOW THE METHOD, INCLUDING THE DIRECTION AND DISTANCED TO OTHER PUBLIC LAND SURVEY CORNERS USED AS EVIDENCE OR USED FOR PROPORTIONING IN DETERMINING THE CORNER LOCATION.

NO.

AFFIX LAND SURVEYOR SEAL

- (H) I, TODD T. RUMMLER, RLS-2443 CERTIFY THAT THE CORNER LOCATION SHOWN ON THIS RECORD WAS DETERMINED BY ME OR UNDER MY DIRECTION AND CONTROL AND THAT THIS U.S. PUBLIC LAND SURVEY MONUMENT RECORD IS CORRECT AND COMPLETE TO THE BEST OF MY KNOWLEDGE AND BELIEF.



SIGNATURE

MARCH 19, 2013

DATE

