

GRANT COUNTY CERTIFIED U.S. PUBLIC LAND SURVEY MONUMENT RECORD

DATUM: NAD 83 (2007) WISCRS	GRANT COUNTY COORDINATES	
CONTROL: COMBINATION OF GPS AND CONVENTIONAL FIELD CONTROL	NORTH	635505.78'
	EAST	875406.09'

THE CENTER OF SECTION 21, TOWN 8 NORTH,
RANGE 1 WEST, TOWN OF MUSCODA, GRANT
COUNTY, WISCONSIN.

(A) IDENTIFY THE CORNER BY REFERENCE
TO THE U.S. PUBLIC LAND SURVEY SYSTEM

■ = CORNER MONUMENT RESTORED

WITNESS TO CORNER LOCATION:

TODD T. RUMMLER

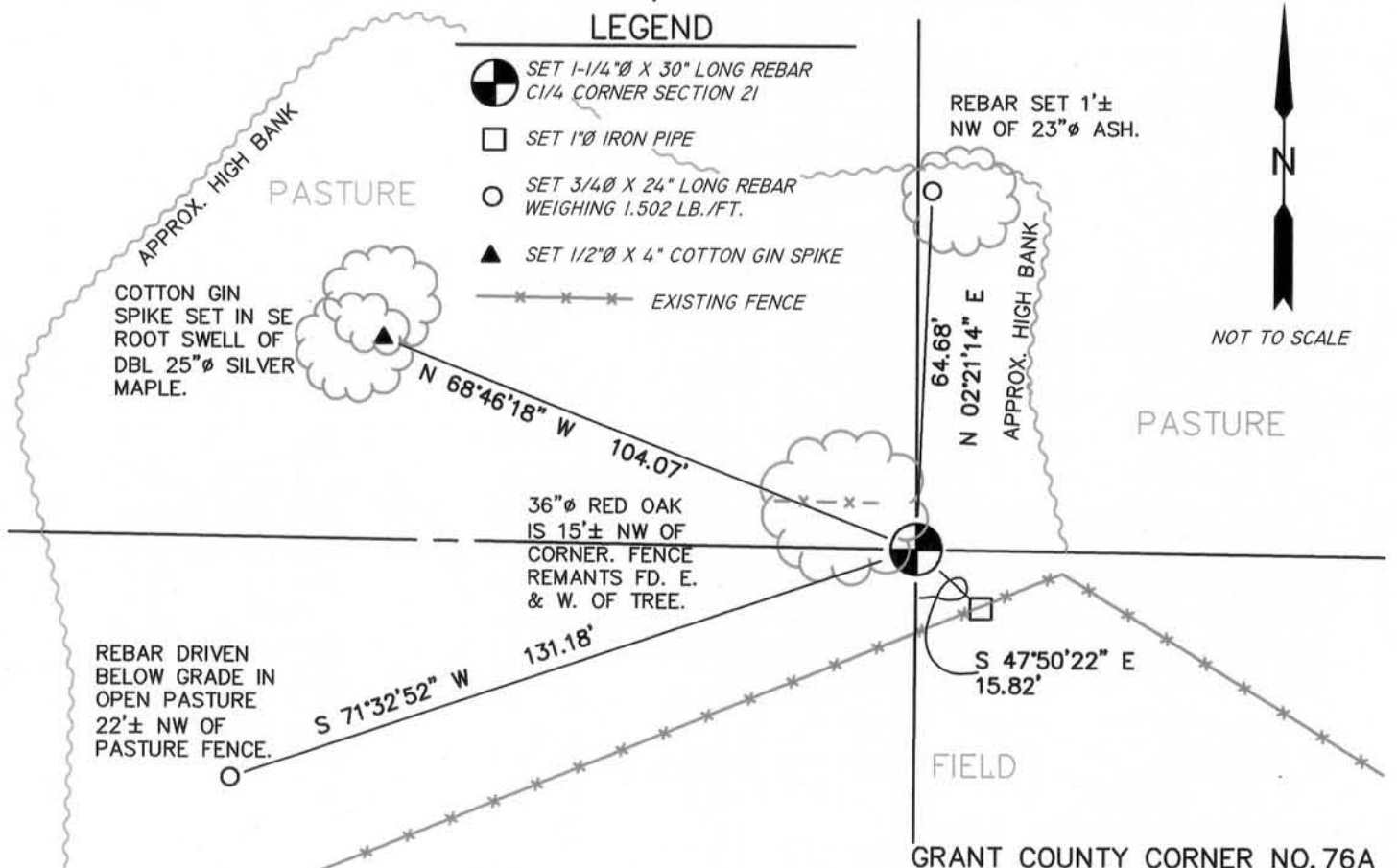


SECTION 21
TOWN 8 NORTH
RANGE 1 WEST

(B) DESCRIBE ANY RECORD EVIDENCE, MONUMENT EVIDENCE, OCCUPATIONAL EVIDENCE,
TESTIMONIAL EVIDENCE OR ANY OTHER MATERIAL EVIDENCE YOU CONSIDERED, AND
WHETHER THE MONUMENT WAS FOUND OR PLACED.

CHARLES SAMPSON WORKED IN SECTIONS 21 AND 28 IN APRIL, 1892 AND THIS WORK IS DOCUMENTED IN SURVEY BOOK D, PAGES 207 AND 208. SAMPSON NOTES THAT HE TOOK TWO BEARING TREES AT THIS CORNER (BLACK OAK 8", N7-1/2°E, 82 LINKS & BLACK OAK 8", S89°E, 70 LINKS). I SEARCHED FOR BOTH OF THESE TREES, AND THERE IS A 36" DIAMETER RED OAK LOCATED IN THE VICINITY OF THE CORNER. HOWEVER, THIS TREE DOES NOT FIT SAMPSON'S SURVEY INFORMATION NOR DOES IT FIT WITH OTHER OCCUPATIONAL EVIDENCE PRESENT IN THE SECTION THAT PROBABLY DEVELOPED AS A RESULT OF SAMPSON'S SURVEY. I SET THIS CORNER ON A STRAIGHT LINE BETWEEN THE EAST AND WEST QUARTER CORNERS OF THE SECTION, AND PRO-RATED THIS DISTANCE AGAINST SAMPSON'S MEASUREMENTS ALONG THIS QUARTER LINE. THIS LOCATION FITS WELL WITH THE LONG-STANDING EAST/WEST FENCE LOCATED EAST OF THE CORNER, AND FITS THE FENCE LINE RUNNING NORTH AT THE OCCUPIED S 1/8TH OF THE NE1/4.

(C) IN THE PLAN VIEW DRAWING BELOW, PROVIDE REFERENCE TIES TO AT LEAST 4 WITNESS
MONUMENTS OR, IF THE LOCATION IS WITHIN A MUNICIPALITY, TO AT LEAST 2 WITNESS
MONUMENTS. (WITNESS MONUMENTS SHALL BE MADE ON CONCRETE, NATURAL STONE, IRON,
OR OTHER EQUALLY DURABLE MATERIAL.) DESCRIBE WITNESS MONUMENTS.



MAR 21 2013

- (D) DESCRIBE ANY MATERIAL DISCREPANCY BETWEEN THE LOCATION OF THE CORNER AS RESTORED OR REESTABLISHED AND THE LOCATION OF THAT CORNER AS PREVIOUSLY RESTORED OR REESTABLISHED BY DISTANCE AND DIRECTION. SHOW THE DISCREPANCY ON THE PLAN VIEW DRAWING UNDER (C), ABOVE. SHOW THE DISTANCES BETWEEN THE CORNER AS PREVIOUSLY RESTORED OR REESTABLISHED AND (1) THE CORNER AS RESTORED OR REESTABLISHED, AND (2) TO AT LEAST 2 OF THE WITNESS MONUMENTS AS SHOWN ON THE DRAWING IN (C), ABOVE.

NONE

- (E) WAS THE CORNER RESTORED THROUGH ACCEPTANCE OF (1) AN OBLITERATED EVIDENCE LOCATION, OR (2) A FOUND PERPETUATED LOCATION?

2.) A FOUND PERPETUATED LOCATION

- (F & G) WAS THE CORNER REESTABLISHED THROUGH LOST CORNER PROPORTIONATE METHODS? IF SO SHOW THE METHOD, INCLUDING THE DIRECTION AND DISTANCED TO OTHER PUBLIC LAND SURVEY CORNERS USED AS EVIDENCE OR USED FOR PROPORTIONING IN DETERMINING THE CORNER LOCATION.

NO.

AFFIX LAND SURVEYOR SEAL

- (H) I, TODD T. RUMMLER, RLS-2443 CERTIFY THAT THE CORNER LOCATION SHOWN ON THIS RECORD WAS DETERMINED BY ME OR UNDER MY DIRECTION AND CONTROL AND THAT THIS U.S. PUBLIC LAND SURVEY MONUMENT RECORD IS CORRECT AND COMPLETE TO THE BEST OF MY KNOWLEDGE AND BELIEF.



MARCH 19, 2013

SIGNATURE

DATE

