

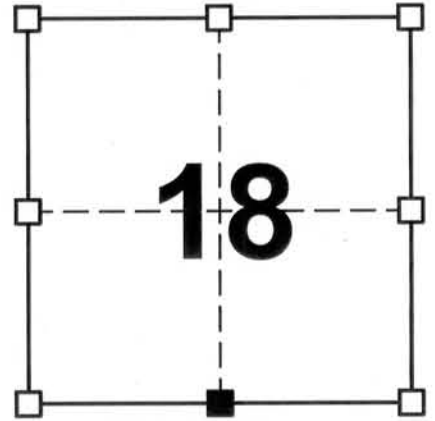
GRANT COUNTY CERTIFIED U.S. PUBLIC LAND SURVEY MONUMENT RECORD

DATUM: NAD 83 (2007)	GRANT COUNTY COORDINATES	
CONTROL: COMBINATION OF GPS AND CONVENTIONAL FIELD CONTROL	NORTH	638,194.47'
	EAST	864,820.58'

*THE SOUTH QUARTER CORNER OF SECTION
18, TOWN 8 NORTH, RANGE 1 WEST, TOWN OF
MUSCODA, GRANT COUNTY, WISCONSIN.*

(A) IDENTIFY THE CORNER BY REFERENCE
TO THE U.S. PUBLIC LAND SURVEY SYSTEM

■ = CORNER MONUMENT RESTORED



SECTION 18
TOWN 8 NORTH
RANGE 1 WEST

WITNESS TO CORNER LOCATION:

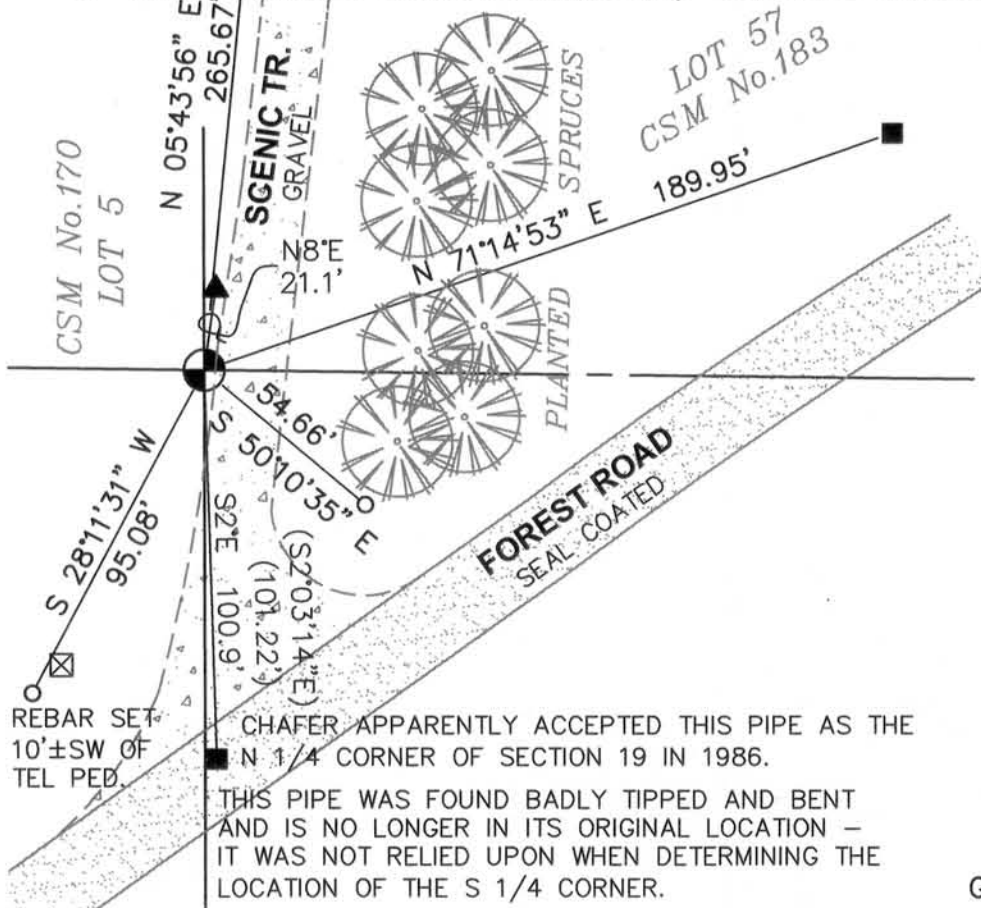
TODD T. RUMMLER

MARK A. MAHONEY

(B) DESCRIBE ANY RECORD EVIDENCE, MONUMENT EVIDENCE, OCCUPATIONAL EVIDENCE, TESTIMONIAL EVIDENCE OR ANY OTHER MATERIAL EVIDENCE YOU CONSIDERED, AND WHETHER THE MONUMENT WAS FOUND OR PLACED.

ROBERT LAMPMAN, R.L.S. 1296 NOTES A 1 1/4" DIAMETER IRON PIPE AT THIS CORNER ON VARIOUS CSM'S IN THE AREA. IN 1986, PAUL CHAFER, R.L.S. 4521 FOUND ONE OF LAMPMAN'S CSM LOT CORNER MONUMENTS IN THE CENTER OF FOREST ROAD AND MISTAKENLY ACCEPTED IT AS THE SOUTH QUARTER CORNER, SET REFERENCE TIES AND PREPARED A TIE SHEET. MIKE R. FISCHER, R.L.S. 2518 SUBDIVIDED SECTION 18 IN MARCH, 2001 ACCORDING TO HIS PLAT OF SURVEY DATED JANUARY 21, 2002 AND FILED IN BOOK 10 OF SURVEYS ON PAGE 22. IT APPEARS THAT HE COMPUTED A LOCATION FOR THE SOUTH QUARTER CORNER FROM EXISTING MONUMENTATION FROM CSM No. 183, HOWEVER HIS PLAT DOES NOT STATE THAT HE ACTUALLY SET A MONUMENT AT THIS CORNER TO PERPETUATE HIS COMPUTED LOCATION, NOR DID MY FIELD SEARCH OF THE AREA RECOVER A MONUMENT AT THE CORNER LOCATION. I COMPUTED A LOCATION FOR THE CORNER BY RECOVERING THE NEAREST AND BEST EXISTING MONUMENTATION FROM CSM No. 183 AND RE-ESTABLISHING THE CORNER FROM THE RECORDED INFORMATION CONTAINED ON CSM No. 183. THIS LOCATION FALLS IN THE WESTERLY ROAD DITCH OF SCENIC TRAIL.

(C) IN THE PLAN VIEW DRAWING BELOW, PROVIDE REFERENCE TIES TO AT LEAST 4 WITNESS MONUMENTS OR, IF THE LOCATION IS WITHIN A MUNICIPALITY, TO AT LEAST 2 WITNESS MONUMENTS. (WITNESS MONUMENTS SHALL BE MADE ON CONCRETE, NATURAL STONE, IRON, OR OTHER EQUALLY DURABLE MATERIAL.) DESCRIBE WITNESS MONUMENTS.



LEGEND

- SET-1"Ø X 36" SMOOTH IRON ROD -S 1/4 COR. SEC.18, T8N,RIW
- SET 3/4Ø X 24" LONG REBAR WEIGHING 1.502 LB./FT.
- 1 1/4"Ø IRON PIPE-FD.
- ▲ 1 1/2"Ø BROKEN OFF IRON PIPE-FD.



NOT TO SCALE

- (D) DESCRIBE ANY MATERIAL DISCREPANCY BETWEEN THE LOCATION OF THE CORNER AS RESTORED OR REESTABLISHED AND THE LOCATION OF THAT CORNER AS PREVIOUSLY RESTORED OR REESTABLISHED BY DISTANCE AND DIRECTION. SHOW THE DISCREPANCY ON THE PLAN VIEW DRAWING UNDER (C), ABOVE. SHOW THE DISTANCES BETWEEN THE CORNER AS PREVIOUSLY RESTORED OR REESTABLISHED AND (1) THE CORNER AS RESTORED OR REESTABLISHED, AND (2) TO AT LEAST 2 OF THE WITNESS MONUMENTS AS SHOWN ON THE DRAWING IN (C), ABOVE.

I HAVE RE-ESTABLISHED LAMPMAN'S SOUTH QUARTER CORNER LOCATION FROM TIES TO EXISTING MONUMENTATION FROM CSM. No. 183. CHAFER ACCEPTED THE SOUTHWEST CORNER OF LOT 57 OF CSM No. 183 AS THE S 1/4 CORNER, BUT THIS LOCATION IS S2°03'14"E, 101.22' FROM LAMPMAN'S SOUTH QUARTER CORNER LOCATION. FISCHER'S COMPUTED LOCATION OF THE SOUTH QUARTER CORNER IS LOCATED N32°52'21" E, 0.87' FROM THE SOUTH QUARTER CORNER LOCATION THAT I HAVE RE-ESTABLISHED AND MONUMENTED.

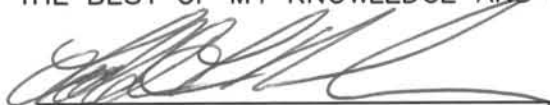
- (E) WAS THE CORNER RESTORED THROUGH ACCEPTANCE OF (1) AN OBLITERATED EVIDENCE LOCATION, OR (2) A FOUND PERPETUATED LOCATION?

2.) A FOUND PERPETUATED LOCATION

- (F & G) WAS THE CORNER REESTABLISHED THROUGH LOST CORNER PROPORTIONATE METHODS? IF SO SHOW THE METHOD, INCLUDING THE DIRECTION AND DISTANCED TO OTHER PUBLIC LAND SURVEY CORNERS USED AS EVIDENCE OR USED FOR PROPORTIONING IN DETERMINING THE CORNER LOCATION.

NO.

- (H) I, TODD T. RUMMLER, RLS-2443 CERTIFY THAT THE CORNER LOCATION SHOWN ON THIS RECORD WAS DETERMINED BY ME OR UNDER MY DIRECTION AND CONTROL AND THAT THIS U.S. PUBLIC LAND SURVEY MONUMENT RECORD IS CORRECT AND COMPLETE TO THE BEST OF MY KNOWLEDGE AND BELIEF.



SIGNATURE

JUNE 27, 2012

DATE

AFFIX LAND SURVEYOR SEAL

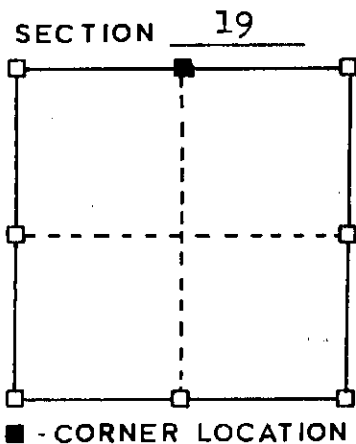


RECORD OF CORNER MONUMENTATION TIE SHEET

N $\frac{1}{4}$ CORNER, SECTION 19, T. 8 N., R. 1 W
GRANT COUNTY, WISCONSIN

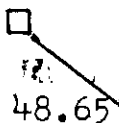


SKETCH OF CORNER
REFERENCE TIES



- TYPE OF MONUMENT:
- 1" iron pipe located
 - ⊙ 1" X 24" iron pipe placed
 - * Existing fence line
 - 60 Penny spikes used to reference trees

Telephone Co.
pedestal box



Forest Rd.

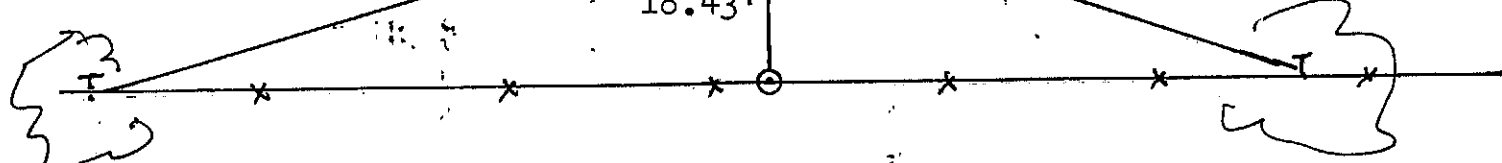
3" Elm Tree

71.92'

18.43'

58.55'

4" Hackberry Tree



SURVEYOR'S CERTIFICATE
STATE OF WISCONSIN)
GRANT COUNTY)

I HEREBY CERTIFY THAT I made the above described reference ties to 1" iron pipe located at the N $\frac{1}{4}$ corner of Section 19. This to the best of my knowledge and belief is correct.

DATED THIS 20 DAY OF October 1986

Paul W. Chafer
REGISTERED LAND SURVEYOR
S-1521

