

GRANT COUNTY

CERTIFIED U.S. PUBLIC LAND SURVEY MONUMENT RECORD

DATUM: NAD 83 (2007)	GRANT COUNTY COORDINATES	
CONTROL: COMBINATION OF GPS AND CONVENTIONAL FIELD CONTROL	NORTH	638,162.00'
	EAST	867,451.86'

*THE SOUTHEAST CORNER OF SECTION 18,
TOWN 8 NORTH, RANGE 1 WEST, TOWN OF
MUSCODA, GRANT COUNTY, WISCONSIN.*

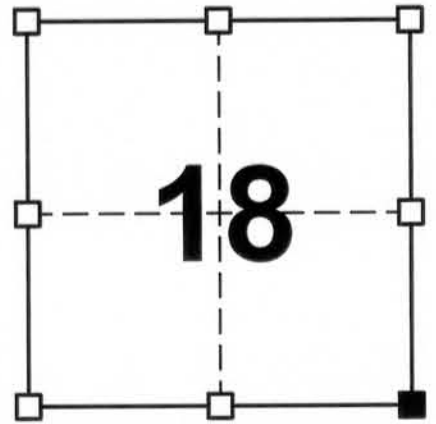
(A) IDENTIFY THE CORNER BY REFERENCE TO THE U.S. PUBLIC LAND SURVEY SYSTEM

■ = CORNER MONUMENT RESTORED

WITNESS TO CORNER LOCATION:

TODD T. RUMMLER

MARK A. MAHONEY

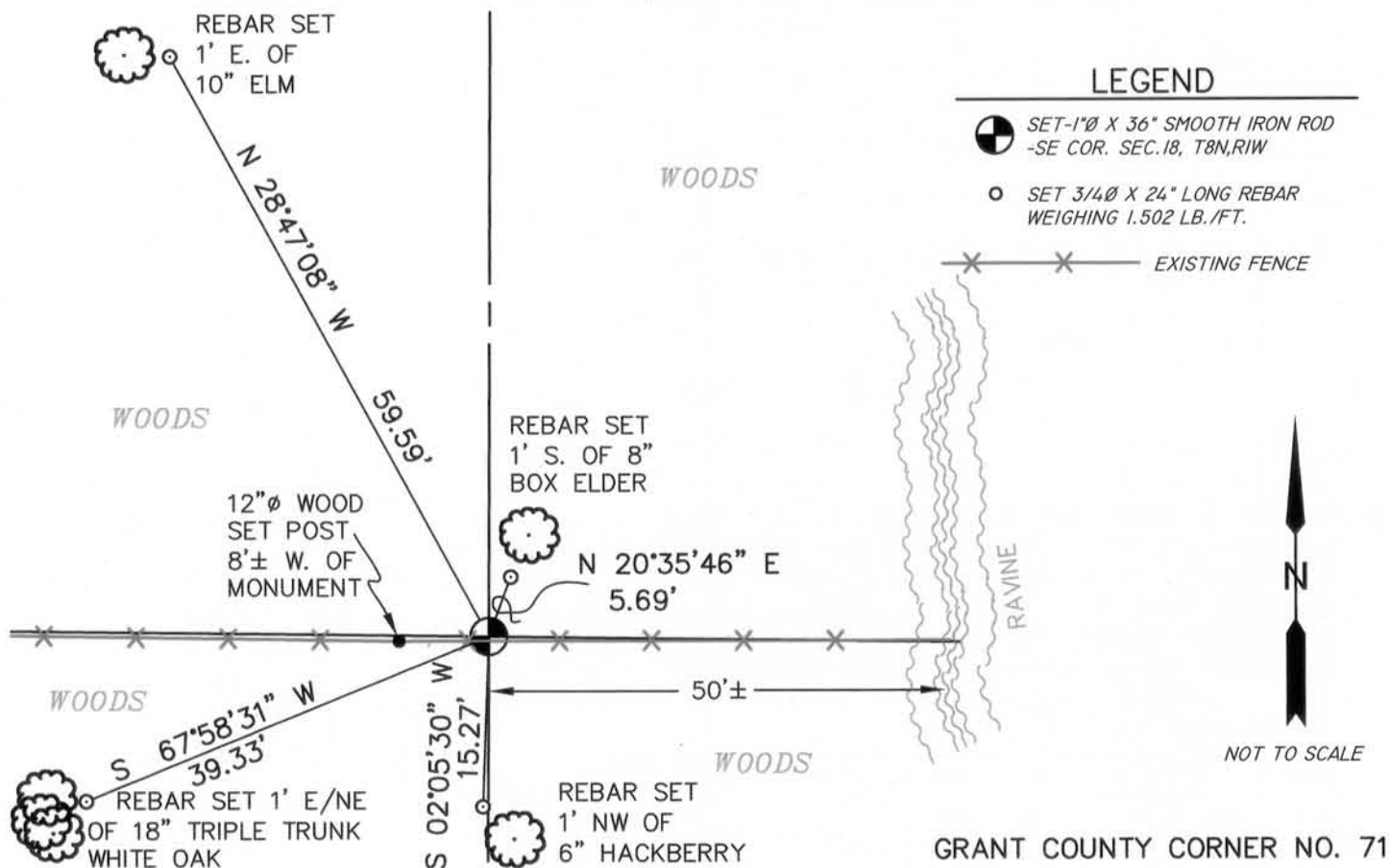


SECTION 18
TOWN 8 NORTH
RANGE 1 WEST

(B) DESCRIBE ANY RECORD EVIDENCE, MONUMENT EVIDENCE, OCCUPATIONAL EVIDENCE, TESTIMONIAL EVIDENCE OR ANY OTHER MATERIAL EVIDENCE YOU CONSIDERED, AND WHETHER THE MONUMENT WAS FOUND OR PLACED.

MIKE R. FISCHER, R.L.S. 2518 SUBDIVIDED SECTION 18 IN MARCH, 2001 ACCORDING TO HIS PLAT OF SURVEY DATED JANUARY 21, 2002 AND FILED IN BOOK 10 OF SURVEYS ON PAGE 22. IT APPEARS THAT HE BASED HIS SUBDIVISION OF THE SECTION ON EXISTING MONUMENTATION FROM PREVIOUS CSM'S IN THE WEST HALF OF THE SECTION. IT WOULD ALSO APPEAR THAT HE COMPUTED A LOCATION FOR THIS CORNER BY FIRST DETERMINING A LOCATION FOR THE NE CORNER OF THE SE1/4-SE1/4 FROM EXISTING MONUMENTATION TO THE WEST THEREOF, AND FROM RECORD LEGAL DESCRIPTIONS. HE THEN APPARENTLY PROJECTED A LINE SOUTH FROM THE EAST QUARTER CORNER, THROUGH HIS LOCATION OF THE NE CORNER OF THE SE1/4-SE1/4, TO INTERSECT THE LONG-STANDING EAST/WEST FENCELINE. HIS PLAT DOES NOT STATE THAT HE ACTUALLY SET A MONUMENT AT THIS CORNER TO PERPETUATE HIS COMPUTED LOCATION, NOR DID MY FIELD SEARCH OF THE AREA RECOVER ANY EVIDENCE OF ANY MONUMENTATION. I COMPUTED A LOCATION FOR THE CORNER BY RECOVERING EXISTING MONUMENTATION AND RETRACING FISCHER'S SUBDIVISION OF THE SE1/4. THE RESULTING LOCATION FALLS ON THE EAST/WEST FENCE LINE. ALTHOUGH IT APPEARS THAT FISCHER DID NOT MONUMENT THIS CORNER LOCATION, I HAVE ACCEPTED HIS COMPUTED LOCATION AS IT KEEPS THE CONVEYANCES THAT HAVE RESULTED FROM HIS 2002 PLAT OF SURVEY INTACT.

(C) IN THE PLAN VIEW DRAWING BELOW, PROVIDE REFERENCE TIES TO AT LEAST 4 WITNESS MONUMENTS OR, IF THE LOCATION IS WITHIN A MUNICIPALITY, TO AT LEAST 2 WITNESS MONUMENTS. (WITNESS MONUMENTS SHALL BE MADE ON CONCRETE, NATURAL STONE, IRON, OR OTHER EQUALLY DURABLE MATERIAL.) DESCRIBE WITNESS MONUMENTS.



(D) DESCRIBE ANY MATERIAL DISCREPANCY BETWEEN THE LOCATION OF THE CORNER AS RESTORED OR REESTABLISHED AND THE LOCATION OF THAT CORNER AS PREVIOUSLY RESTORED OR REESTABLISHED BY DISTANCE AND DIRECTION. SHOW THE DISCREPANCY ON THE PLAN VIEW DRAWING UNDER (C), ABOVE. SHOW THE DISTANCES BETWEEN THE CORNER AS PREVIOUSLY RESTORED OR REESTABLISHED AND (1) THE CORNER AS RESTORED OR REESTABLISHED, AND (2) TO AT LEAST 2 OF THE WITNESS MONUMENTS AS SHOWN ON THE DRAWING IN (C), ABOVE.

NONE

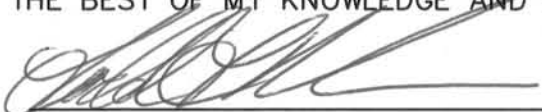
(E) WAS THE CORNER RESTORED THROUGH ACCEPTANCE OF (1) AN OBLITERATED EVIDENCE LOCATION, OR (2) A FOUND PERPETUATED LOCATION?

2.) A FOUND PERPETUATED LOCATION

(F & G) WAS THE CORNER REESTABLISHED THROUGH LOST CORNER PROPORTIONATE METHODS? IF SO SHOW THE METHOD, INCLUDING THE DIRECTION AND DISTANCED TO OTHER PUBLIC LAND SURVEY CORNERS USED AS EVIDENCE OR USED FOR PROPORTIONING IN DETERMINING THE CORNER LOCATION.

NO.

(H) I, TODD T. RUMMLER, RLS-2443 CERTIFY THAT THE CORNER LOCATION SHOWN ON THIS RECORD WAS DETERMINED BY ME OR UNDER MY DIRECTION AND CONTROL AND THAT THIS U.S. PUBLIC LAND SURVEY MONUMENT RECORD IS CORRECT AND COMPLETE TO THE BEST OF MY KNOWLEDGE AND BELIEF.



SIGNATURE

JUNE 27, 2012

DATE

AFFIX LAND SURVEYOR SEAL

