

81063

GRANT COUNTY

CERTIFIED U.S. PUBLIC LAND SURVEY MONUMENT RECORD

INSTRUCTIONS: THIS RECORD SHALL SHOW THE LOCATION OF THE CORNER AND SHALL INCLUDE ALL OF THE FOLLOWING ELEMENTS (A-1)

(A) IDENTIFY THE CORNER BY REFERENCE TO THE U.S. PUBLIC LAND SURVEY SYSTEM
NORTHWEST CORNER SECTION 24, T8N, R1W



NORTHWEST CORNER

SECTION 24, TOWN 8 NORTH, RANGE 1 WEST

TOWN OF MUSCODA, GRANT COUNTY, WISCONSIN



⊕ = CORNER MONUMENT RECOVERED -
STONE MONUMENT, ALUMINUM CAPPED REBAR WITNESS MONUMENT
WITNESSES TO CORNER LOCATION
1) SEAN M. WALSH

MEASUREMENTS BASED UPON TRADITIONAL TOTAL STATION
MEASUREMENTS FROM GPS CONTROL

BASIS OF BEARINGS AND ORIENTAITON
WCCRS GRANT COUNTY, NAD 83(2011)

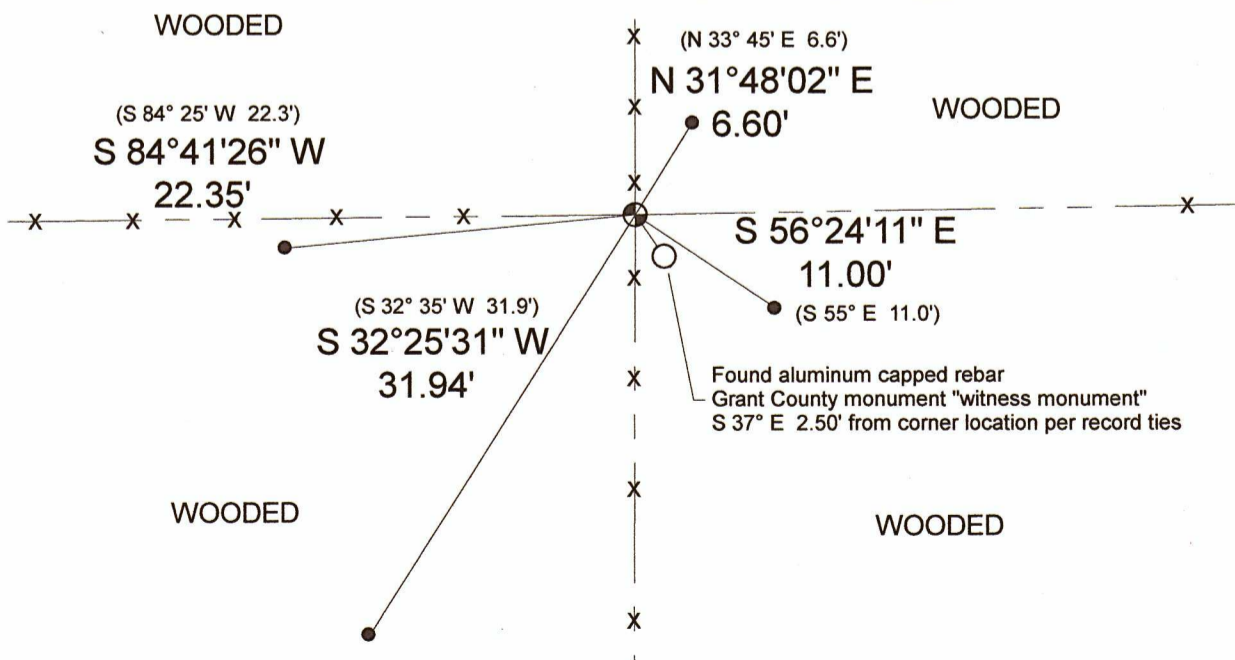
(B) A DESCRIPTION OF ANY RECORD EVIDENCE, MONUMENT EVIDENCE, OCCUPATIONAL EVIDENCE, TESTIMONIAL EVIDENCE OR ANY OTHER MATERIAL EVIDENCE CONSIDERED BY THE PROFESSIONAL LAND SURVEYOR AND WHETHER THE MONUMENT WAS FOUND OR PLACED.

ON APRIL 20, 2022, IN CONJUNCTION WITH A PRIVATE SURVEY FOR AMEEN TALEB, LOCATED IN PART OF SECTION 24, T8N, R1W, TOWN OF MUSCODA, I FOUND THE STONE MONUMENT PREVIOUSLY DOCUMENTED BY BRUCE BOWDEN IN 1998. I ALSO LOCATED THE 4 WITNESS TIES DOCUMENTED BY MR. BOWDEN. THE STONE WAS LEANING NORTHERLY AND THE LOCATION FROM THE BOWDEN WITNESS TIES FELL ON THE SIDE OF THE STONE. THE STONE APPEARED TO BE GROWN INTO THE ROOTS OF A LARGE RED OAK TREE SOUTHWEST OF THE CORNER. I ALSO LOCATED AN ALUMINUM CAPPED REBAR SOUTHEAST OF THE STONE. THE CAPPED REBAR DOES NOT AGREE WITH THE FORMER BOWDEN LOCATION PER EXISTING WITNESS TIES. I ACCEPTED A LOCATION AS PERPETUATED BY THE BOWDEN WITNESS TIES. I ALSO ACCEPTED THE ALUMINUM CAPPED REBAR AS A WITNESS MONUMENT TO THE ORIGINAL CORNER LOCATION AS SHOWN BELOW. THE LOCATION BASED ON BOWDENS PERPETUATION OF THE CORNER LOCATION AGREES WELL WITHIN REASONABLE PROXIMITY OF DIMENSIONS PREVIOUSLY DOCUMENTED BY LAWRENCE SCHMIT ON A SECTION SUMMARY SHEET DATED 4/4/2000.

(C) IN THE PLAN VIEW DRAWING BELOW, PROVIDE REFERENCE TO AT LEAST 4 WITNESS MONUMENTS OR, IF THE LOCATION IS WITHIN A MUNICIPALITY, TO AT LEAST 2 WITNESS MONUMENTS. (WITNESS MONUMENTS SHALL BE MADE OF CONCRETE, NATURAL STONE, IRON OR OTHER EQUALLY DURABLE MATERIAL) DESCRIBE WITNESS MONUMENTS

DRAWING NOT TO SCALE

(D) SHOW A PLAN VIEW DRAWING, DEPICTING THE RELEVANT MONUMENTS AND REFERENCE TIES, WHICH IS SUFFICIENTLY DETAILED TO ENABLE ACCURATE RELOCATION OF THE CORNER MONUMENT IF IT IS DISTURBED.



LEGEND

- ⊕ Found 8" x 8" Stone monument leaning northerly, corner location from witness ties falls on side of stone
- 3/4" dia x 18" iron rebar found per Bowden 1998 record.
- x - Existing fence line

81063

GRANT COUNTY
CERTIFIED U.S. PUBLIC LAND SURVEY MONUMENT RECORD

RECOVERY PROCEDURES:

(E) A DESCRIPTION OF ANY RECORD EVIDENCE, MONUMENT EVIDENCE, OCCUPATIONAL EVIDENCE, TESTIMONIAL EVIDENCE OR ANY OTHER MATERIAL EVIDENCE CONSIDERED BY THE SURVEYOR, AND WHETHER THE MONUMENT WAS FOUND OR PLACED;

SEE OPPOSITE SIDE

(F) WHETHER THE CORNER WAS RESTORED THROUGH ACCEPTANCE OF AN OBLITERATED EVIDENCE LOCATION OR A FOUND PERPETUATED LOCATION; A FOUND PERPETUATED LOCATION

(G) WHETHER THE CORNER WAS REESTABLISHED THROUGH LOST-CORNER PROPORTIONATE METHODS; IF SO, SHOW THE DIRECTIONS AND DISTANCES TO OTHER PUBLIC LAND SURVEY CORNERS WHICH WERE USED AS EVIDENCE OR USED FOR PROPORTIONING IN DETERMINING THE CORNER LOCATION;

N/A

7.08 (3) (h)

N/A

SURVEYOR'S CERTIFICATE: CHAPTER 7.08 (3) (I)

THE UNDERSIGNED HEREBY CERTIFIES THAT THE U.S. PUBLIC LAND SURVEY MONUMENT RECORD SHOWN WAS DETERMINED BY THEM OR UNDER THEIR DIRECTION AND IS CORRECT AND COMPLETE TO THE BEST OF THEIR KNOWLEDGE AND BELIEF.



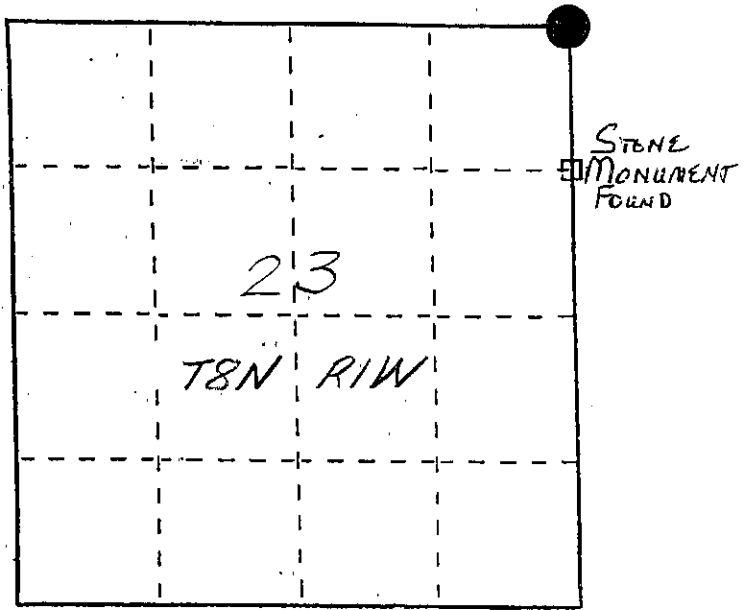
Sean M. Walsh 6/2/2022

DATE CERTIFIED

U. S. PUBLIC LAND SURVEY MONUMENT RECORD

INSTRUCTIONS: This record shall show the location of the corner and shall include all of the following nine elements (a through i).

- (a) Identify the corner by reference to the U.S. public land survey system.
- = Corner monument restored.



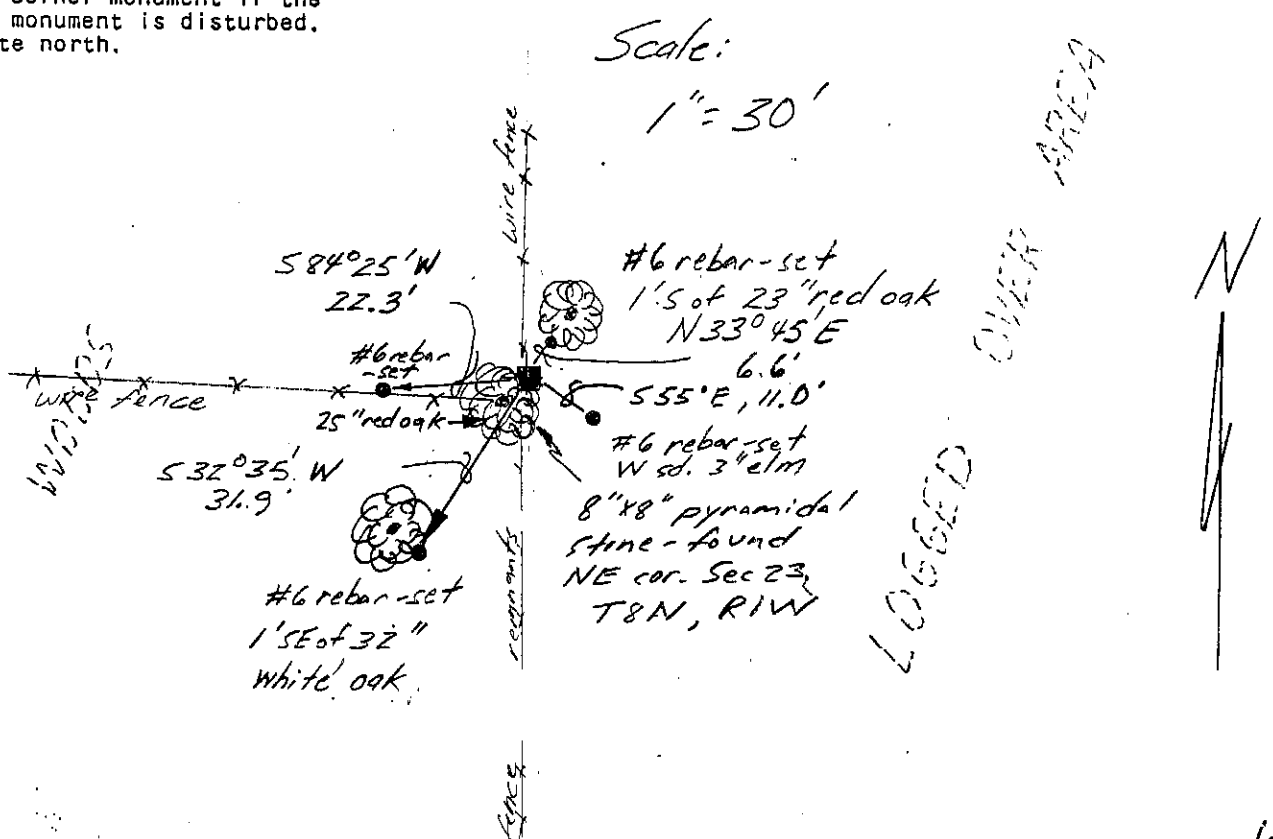
The Northeast corner of
Section 23, Town 8 North,
Range 1 West, Muscoda
Township, Grant County,
Wisconsin

- (b) Describe any record evidence, monument evidence, occupational evidence, testimonial evidence or any other material evidence you considered, and whether the monument was found or placed.

An 8" x 8" pyramidal stone was found at a fence intersection and was accepted as the corner following verification by proportionate measurements from a GPS and EDM survey of the area.

- (c) In the plan view drawing below, provide reference ties to at least 4 witness monuments, or, if the location is within a municipality, to at least 2 witness monuments. (Witness monuments shall be made of concrete, natural stone, iron or other equally durable material, ~~except wood.~~) Describe witness monuments.

- (d) Show a plan view drawing depicting the relevant monuments and reference ties which is sufficient in detail to enable accurate relocation of the corner monument if the corner monument is disturbed. Indicate north.



(e) Describe any material discrepancy between the location of the corner as restored or reestablished and the location of that corner as previously restored or reestablished by distance and direction. Show the discrepancy on the plan view drawing under (d), above. Show the distances between the corner as previously restored or reestablished and (1) the corner as restored or reestablished, and (2) to at least 2 of the witness monuments shown on the drawing in (d), above.

None.

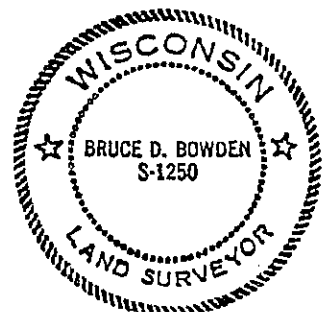
(f) Was the corner restored through acceptance of (1) an obliterated evidence location, or, (2) a found perpetuated location?

2.) A found perpetuated location.

(g&h) Was the corner reestablished through lost corner proportionate methods? If so, show the method, including the directions and distances to other public land survey corners used as evidence or used for proportioning in determining the corner location?

No

Affix Land Surveyor Seal



(i) I, BRUCE D. BOWDEN,

(type or print name) certify that the corner location shown on this record was determined by me or under my direction and control and that this U.S. Public Land Survey Monument Record is correct and complete to the best of my knowledge and belief.

Bruce D. Bowden
Signature

July 24, 1998
Date