

**U.S. PUBLIC LAND SURVEY MONUMENT RECORD**

(As Required By s. A-E 7.08, WI Adm. Code)

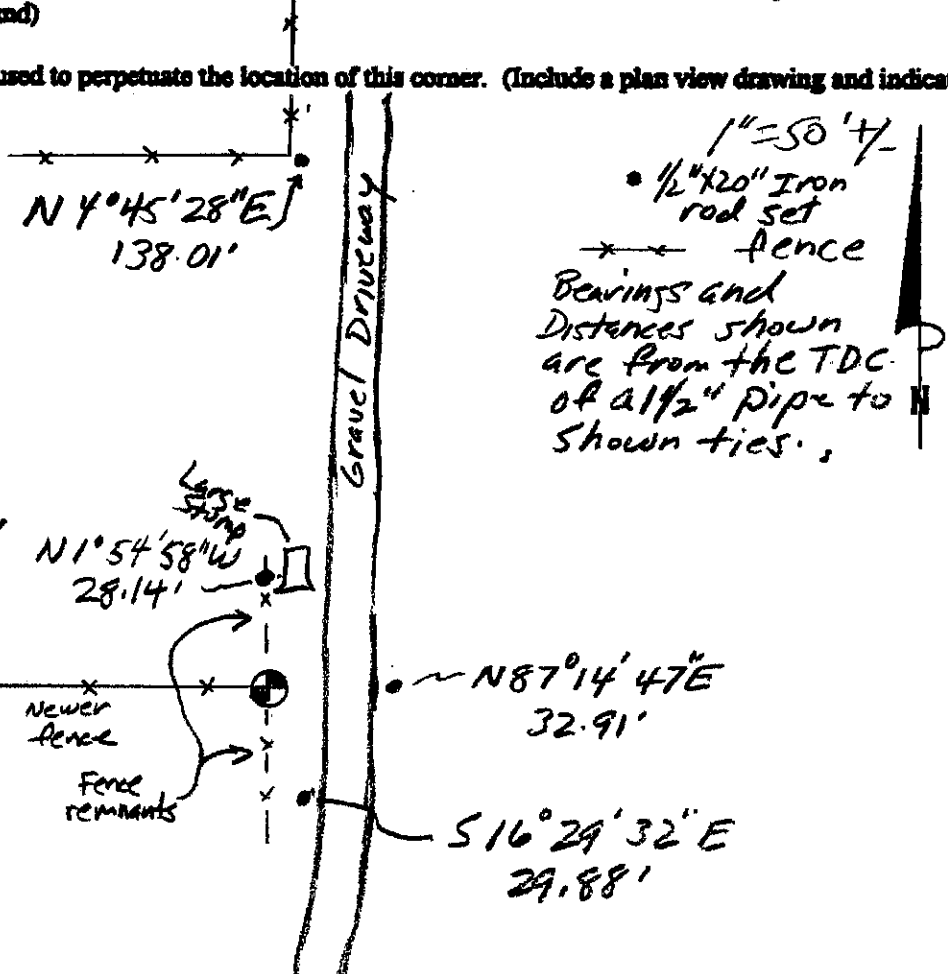
History of original corner establishment and subsequent restorations and description of any record, monument, occupational, testimonial or other evidence considered:

*A 1 1/2" iron pipe was found at the corner as noted in several surveys and summary sheets on file at the courthouse. Ties were set as shown. The corner fits well with the SW and SE corners.*

Corner was: (Check All That Apply)

- Restored through acceptance of an obliterated evidence location
- Restored through acceptance of a found perpetuated location
- Considered a lost corner and reestablished through lost corner proportionate methods (include a plan view drawing showing distances and directions to other Public Land Survey Corners used for proportioning and determining the corner location)
- Restored or reestablished in a location that differs from a previous restoration or reestablishment (include a plan view drawing and indicate what was set and/or found)

Describe the monument and accessories used to perpetuate the location of this corner. (Include a plan view drawing and indicate what was set and/or found)



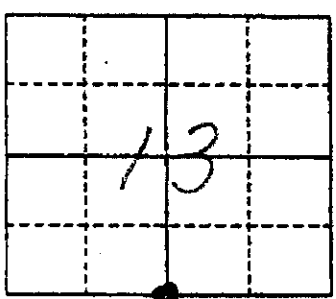
The 5 1/4

corner of Section 13

T. 8 N., R. 1 W  
Grant County, Wisconsin

Job ID: 2001-51

Book # \_\_\_\_\_



● = Location of Corner

Michael R. LaRosa

Type or print name certify that the corner location shown on this record was determined by me or under my direction and control and that this U.S. Public Land Survey Monument Record is correct and complete to the best of my knowledge and belief.

Michael R. LaRosa 11/13/2001  
Signature Date



Index No. \_\_\_\_\_

GRANT COUNTY CLERK  
RECEIVED

FORM NO. 985-A

H.C. Miller Company

62

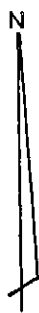
APR 26 1985

# RECORD OF CORNER MONUMENTATION

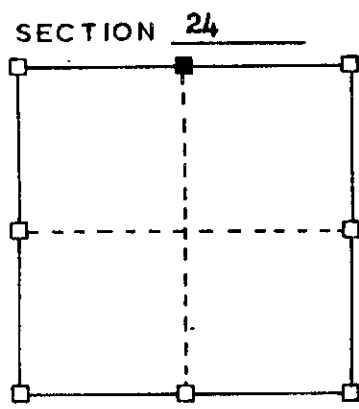
NORTH  $\frac{1}{4}$  CORNER, SECTION 24 TOWNSHIP 8 N., RANGE 1 W.  
GRANT COUNTY, WISCONSIN.

STATE PLANE COORDINATES OF \_\_\_\_\_  
(Y) NORTH \_\_\_\_\_ ELEVATION \_\_\_\_\_  
(X) EAST \_\_\_\_\_

HORIZONTAL DATUM: WISCONSIN STATE PLANE COORDINATE SYSTEM, SOUTH ZONE



SKETCH OF CORNER REFERENCE TIES



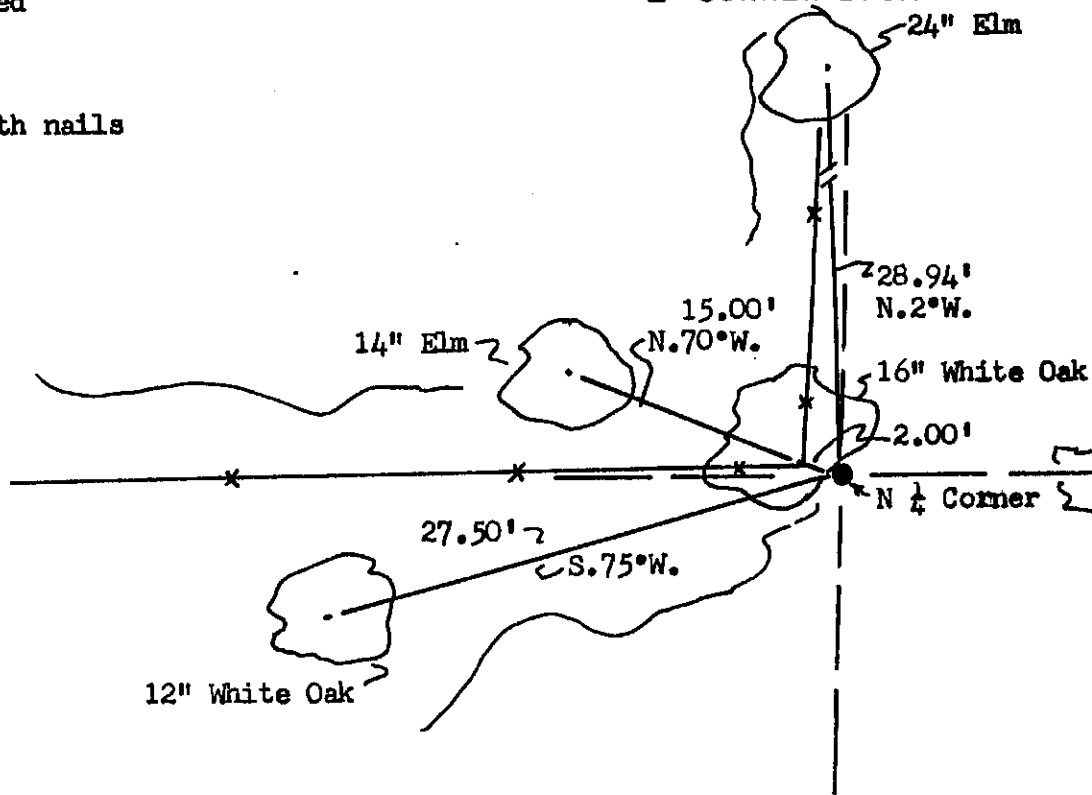
■ - CORNER LOCATION

TYPE OF MONUMENT:

- 1 1/4" iron pipe located
- X— Existing fence line
- ☁ Trees referenced with nails

Magnetic Bearings

Scale 1"=10'



SURVEYOR'S CERTIFICATE  
(STATE OF WISCONSIN)

Grant County)

I HEREBY CERTIFY THAT during the month of March while doing a survey I did have reason to reference the North Quarter Corner which had been established by K. A. Kerst, July 1981. This location is to the best of my knowledge and belief correct.

DATED THIS 23 DAY OF  
March 1985

*Paul W. Chafer*  
REGISTERED LAND SURVEYOR  
S- 1521

