

U.S. PUBLIC LAND SURVEY MONUMENT RECORD

(As Required By s. A-E 7.08, WI Adm. Code)

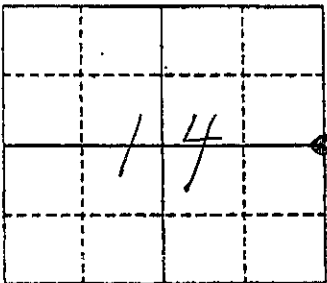
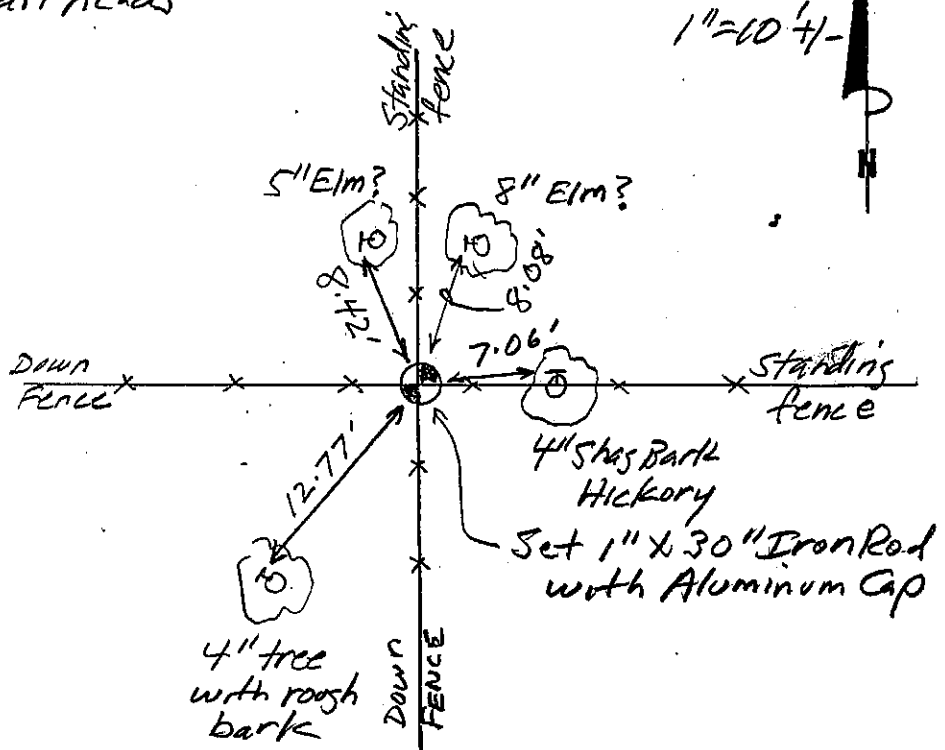
History of original corner establishment and subsequent restorations and description of any record, monument, occupational, testimonial or other evidence considered: *The only survey records that I found of this corner are a group of surveys from 1856. These surveys indicate that the original corner was in place and that there was 4 way ownership at the corner. I searched the area and accepted an ancient 4 way fence intersection as the corner location. It was nearly on line with corners north & south and only 8' from the computed 1/2 way point. Considering the terrain this was extremely close. See sections summary sheet for relationships.*

- Restored through acceptance of an obliterated evidence location
- Restored through acceptance of a found perpetuated location
- Considered a lost corner and reestablished through lost corner proportionate methods (include a plan view drawing showing distances and directions to other Public Land Survey Corners used for proportioning and determining the corner location)
- Restored or reestablished in a location that differs from a previous restoration or reestablishment (include a plan view drawing and indicate what was set and /or found)

Describe the monument and accessories used to perpetuate the location of this corner. (Include a plan view drawing and indicate what was set and/or found) *NOTE: All ties are ring shank nails in trees as shown. Ties were set on 2/18/02 and no leaves were on trees to properly identify the types. measurements are to nail heads*

Grant Co. Coords
 (N) 640710.99
 (E) 888552.56

The E 1/4
 corner of Section 14
 T. 8 N., R. 1 W.
Grant County, Wisconsin
 Job ID: 2002-6
 Book # 3 P72



● = Location of Corner

Michael R. LaRosa
 Type or print name) certify that the corner location shown on this record was determined by me or under my direction and control and that this U.S. Public Land Survey Monument Record is correct and complete to the best of my knowledge and belief.

Michael R. LaRosa 2/18/2002
 Signature Date



Index No. _____