

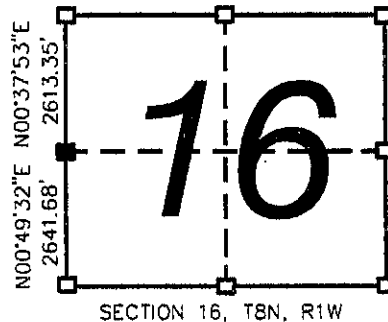
GRANT COUNTY CERTIFIED U.S. PUBLIC LAND SURVEY MONUMENT RECORD

INSTRUCTIONS: THIS RECORD SHALL SHOW THE LOCATION OF THE CORNER AND SHALL INCLUDE ALL OF THE FOLLOWING NINE ELEMENTS (A THROUGH I)

- (A) IDENTIFY THE CORNER BY REFERENCE TO THE U.S. PUBLIC LAND SURVEY SYSTEM
 ■ = CORNER MONUMENT RESTORED

WITNESSES TO CORNER LOCATION:
 ANDREW J. NEEFE
 KEITH D. WERTHWEIN

STATE PLANE COORDINATES (WISCONSIN SOUTH ZONE)
 NORTHING:
 EASTING:



- (B) DESCRIBE ANY RECORD EVIDENCE, MONUMENT EVIDENCE, OCCUPATIONAL EVIDENCE, TESTIMONIAL EVIDENCE, OR ANY OTHER MATERIAL EVIDENCE YOU CONSIDERED, AND WHETHER THE MONUMENT WAS FOUND OR PLACED.

BARBER NOTES "NE BEARING GOOD" WHEN HE WENT TO THIS CORNER IN JUNE, 1880. SAMPSON NOTES HE "FOUND REMAINS OF BOTH ORIGINAL TREES" AND ESTABLISHED 2 NEW BEARING TREES IN MAY, 1897. I FOUND THE BROKEN SNAG REMAINS OF SAMPSON'S 8" BLACK OAK BEARING TREE AND PLACED THE WEST QUARTER CORNER USING SAMPSON'S RECORDED TIE TO THIS TREE.

- (C) IN THE PLAN VIEW DRAWING BELOW, PROVIDE REFERENCE TIES TO AT LEAST 4 WITNESS MONUMENTS, OR, IF THE LOCATION IS WITHIN A MUNICIPALITY, TO AT LEAST 2 WITNESS MONUMENTS, (WITNESS MONUMENTS SHALL BE MADE OF CONCRETE, NATURAL STONE, IRON OR OTHER EQUALLY DURABLE MATERIAL). DESCRIBE WITNESS MONUMENTS.

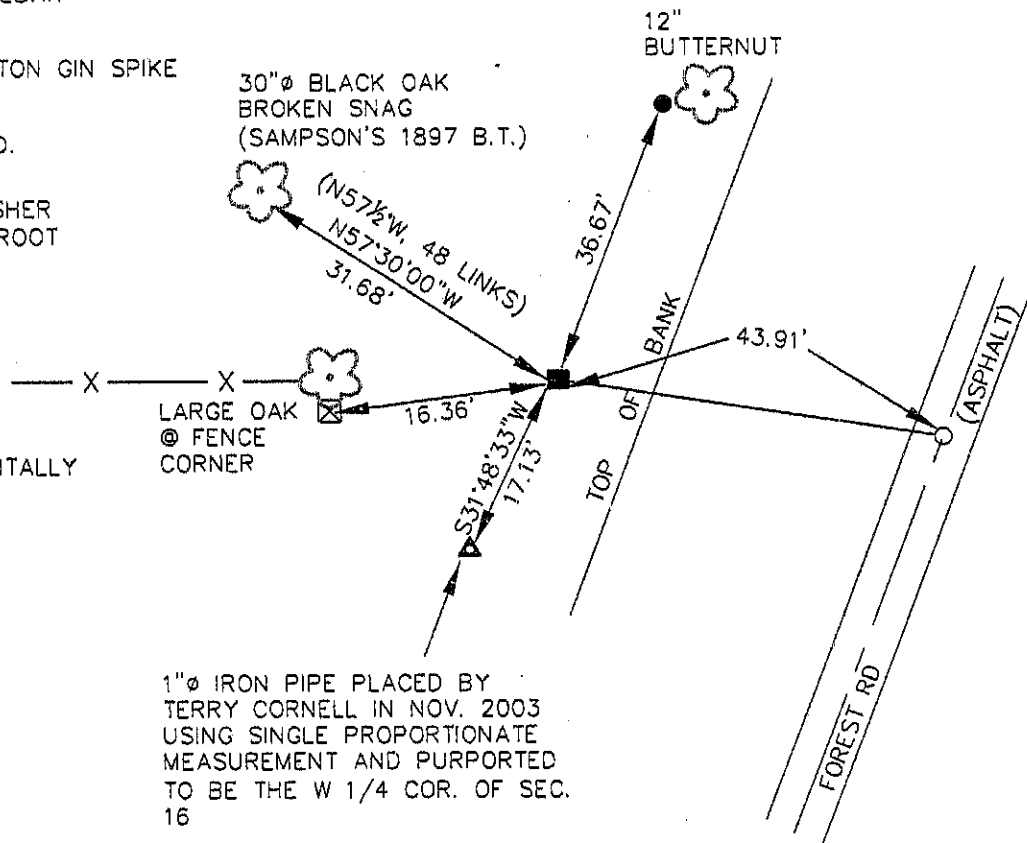
- (D) SHOW A PLAN VIEW DRAWING DEPICTING THE RELEVANT MONUMENTS AND REFERENCE TIES WHICH IS SUFFICIENT IN DETAIL TO ENABLE ACCURATE RELOCATION OF THE CORNER MONUMENT IF IT IS DISTURBED.



LEGEND

- W 1/4 CORNER SEC. 16
1 1/4"Ø X 30" REBAR SET
- 3/4"Ø X 24" REBAR SET AS TIE
- 1/2"Ø X 6" COTTON GIN SPIKE SET AS TIE
- ▲ 1"Ø IRON PIPE FD.
- ⊗ PK NAIL W/ WASHER IN LARGE TREE ROOT
- () RECORDED AS

DISTANCES TO TIES MEASURED HORIZONTALLY BY EDM.



CORNER NO. 56

(E) DESCRIBE ANY MATERIAL DISCREPANCY BETWEEN THE LOCATION OF THE CORNER AS RESTORED OR REESTABLISHED AND THE LOCATION OF THAT CORNER AS PREVIOUSLY RESTORED OR REESTABLISHED BY DISTANCE AND DIRECTION. SHOW THE DISCREPANCY ON THE PLAN VIEW DRAWING UNDER (D), ABOVE. SHOW THE DISTANCES BETWEEN THE CORNER AS PREVIOUSLY RESTORED OR REESTABLISHED AND (1) THE CORNER AS RESTORED OR REESTABLISHED, AND (2) TO AT LEAST 2 OF THE WITNESS MONUMENTS SHOWN ON THE DRAWING IN (D) ABOVE.

FROM THE CORNER AS PLACED BY ME FROM THE TIE TO SAMPSON'S BEARING TREE TO THE 1" PIPE PLACED BY TERRY CORNELL BY SINGLE PROPORTIONATE MEASUREMENT IS S31°48'33"W, 17.13'.

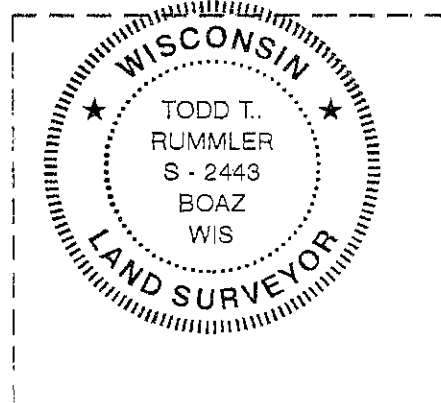
(F) WAS THE CORNER RESTORED THROUGH ACCEPTANCE OF (1) AN OBLITERATED EVIDENCE LOCATION, OR, (2) A FOUND PERPETUATED LOCATION?

(2) A FOUND PERPETUATED LOCATION.

(G&H) WAS THE CORNER REESTABLISHED THROUGH LOST CORNER PROPORTIONATE METHODS? IF SO, SHOW THE METHOD, INCLUDING THE DIRECTIONS AND DISTANCES TO OTHER PUBLIC LAND SURVEY CORNERS USED AS EVIDENCE OR USED FOR PROPORTIONING IN DETERMINING THE CORNER LOCATION.

NO

AFFIX LAND SURVEYOR SEAL



(I) I, TODD T. RUMMLER, RLS- 2443,
CERTIFY THAT THE CORNER LOCATION SHOWN ON
THIS RECORD WAS DETERMINED BY ME OR UNDER MY
DIRECTION AND CONTROL AND THAT THIS U.S. PUBLIC LAND
SURVEY MONUMENT RECORD IS CORRECT AND COMPLETE
TO THE BEST OF MY KNOWLEDGE AND BELIEF.


SIGNATURE

4/1/05
DATE



Handwritten notes in the center of the image:
Handwritten
W. 1000
a good place

Handwritten notes in the bottom left corner:
R.L.S. 1905

Handwritten notes on the right edge of the image:
dia
m
p
10
N3
17.
1

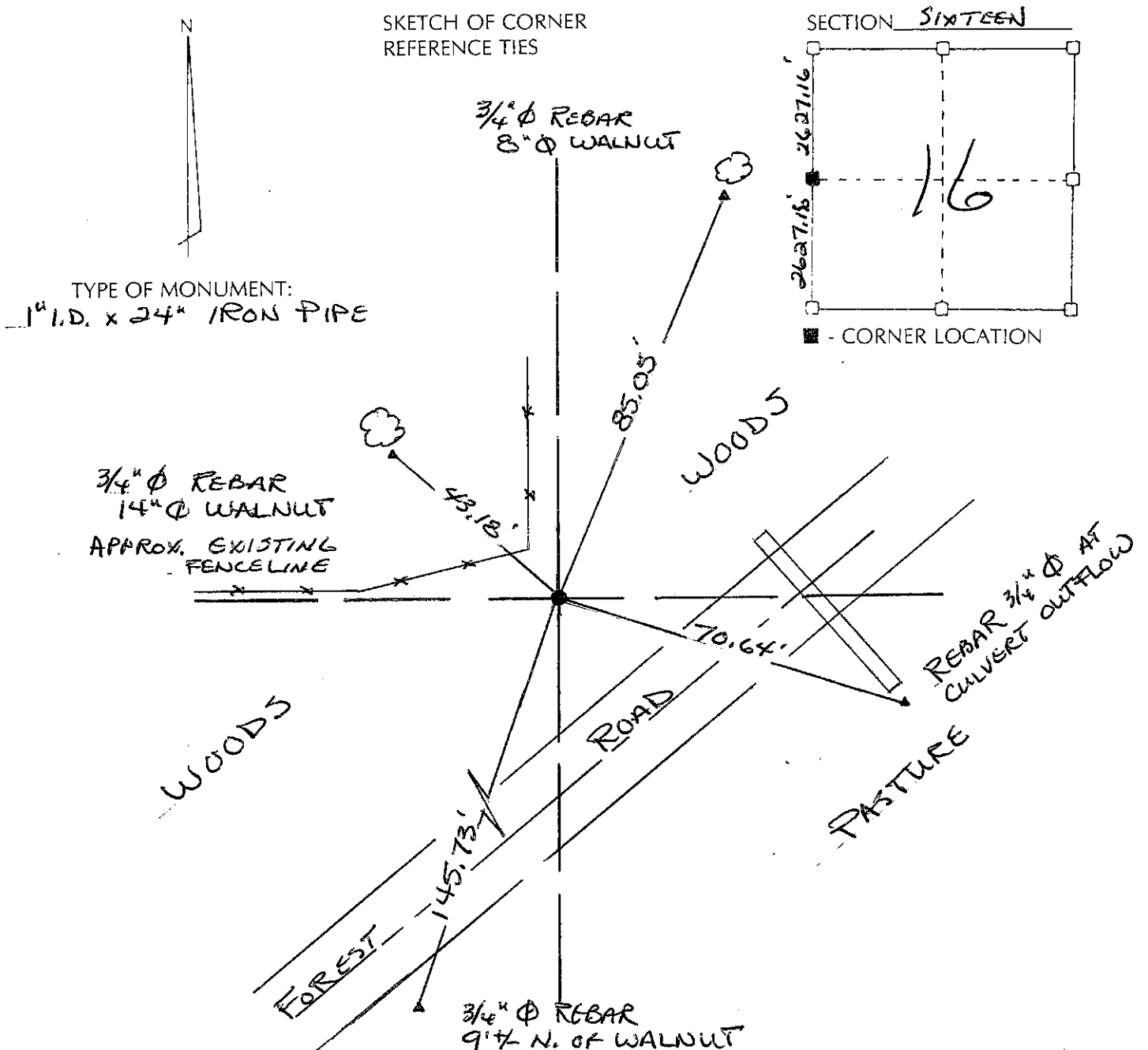
RECORD OF CORNER MONUMENTATION

W 1/4 CORNER SECTION 16 TOWNSHIP 8 N RANGE 1W
GRANT COUNTY, WISCONSIN

STATE PLANE COORDINATES OF _____
(Y) NORTH _____
(X) EAST _____

ELEVATION _____

HORIZONTAL DATUM: WISCONSIN STATE PLANE COORDINATE SYSTEM, SOUTH ZONE



SURVEYOR'S CERTIFICATE
(STATE OF WISCONSIN)

I HEREBY CERTIFY THAT ON OR ABOUT NOVEMBER 6, 2003 WE DID TRAVERSE THE WEST LINE OF SECTION 16 USING GPS AND TOTAL STATION. WE SET THIS CORNER ON LINE BETWEEN THE NW AND SW CORNERS AT EQUAL DISTANCES. THE TIES SHOWN ABOVE WERE SET TO PERPETUATE THIS CORNER.

DATED THIS 13th DAY OF
November, 2003

Terry L. Cornell
REGISTERED LAND SURVEYOR
S-1905

