

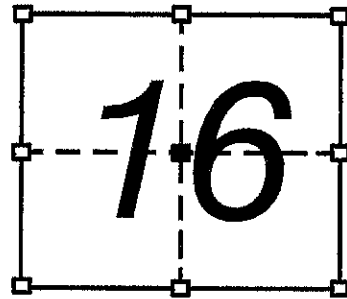
GRANT COUNTY CERTIFIED U.S. PUBLIC LAND SURVEY MONUMENT RECORD

INSTRUCTIONS: THIS RECORD SHALL SHOW THE LOCATION OF THE CORNER AND SHALL INCLUDE ALL OF THE FOLLOWING NINE ELEMENTS (A THROUGH I)

- (A) IDENTIFY THE CORNER BY REFERENCE TO THE U.S. PUBLIC LAND SURVEY SYSTEM
 ■ = CORNER MONUMENT RESTORED

WITNESSES TO CORNER LOCATION:
 ANDREW J. NEEFE
 KEITH D. WERTHWEIN

STATE PLANE COORDINATES (WISCONSIN SOUTH ZONE)
 NORTHING:
 EASTING:



SECTION 16, T8N, R1W

- (B) DESCRIBE ANY RECORD EVIDENCE, MONUMENT EVIDENCE, OCCUPATIONAL EVIDENCE, TESTIMONIAL EVIDENCE, OR ANY OTHER MATERIAL EVIDENCE YOU CONSIDERED, AND WHETHER THE MONUMENT WAS FOUND OR PLACED.

BARBER NOTES 2 BEARING TREES IN JUNE, 1880. BARBER ALSO ESTABLISHED A REFERENCE TIE TO "CENTRE FACE OF ROCK 2 FEET HIGH N31 1/2°W, 69 1/2 LINKS." I FOUND BARBER'S REFERENCE ROCK AND PLACED THE CORNER USING HIS RECORDED TIE INFORMATION. I ALSO FOUND A 1" PIPE WHICH FIT THE FENCES BETTER THAN SAMPSON'S LOCATION, BUT FOUND NO RECORD OF THE PIPE IN THE GRANT COUNTY SURVEY RECORDS.

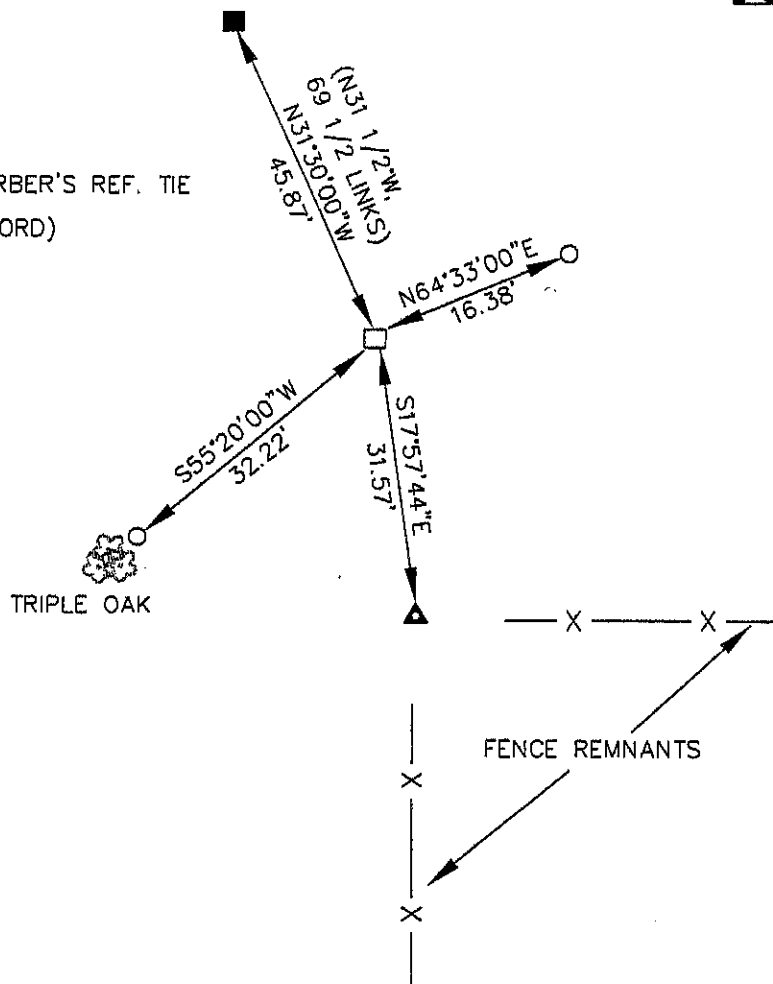
- (C) IN THE PLAN VIEW DRAWING BELOW, PROVIDE REFERENCE TIES TO AT LEAST 4 WITNESS MONUMENTS, OR, IF THE LOCATION IS WITHIN A MUNICIPALITY, TO AT LEAST 2 WITNESS MONUMENTS, (WITNESS MONUMENTS SHALL BE MADE OF CONCRETE, NATURAL STONE, IRON OR OTHER EQUALLY DURABLE MATERIAL). DESCRIBE WITNESS MONUMENTS.

- (D) SHOW A PLAN VIEW DRAWING DEPICTING THE RELEVANT MONUMENTS AND REFERENCE TIES WHICH IS SUFFICIENT IN DETAIL TO ENABLE ACCURATE RELOCATION OF THE CORNER MONUMENT IF IT IS DISTURBED.

LEGEND

- C 1/4 COR. SEC. 16
- 1 1/4" IRON REBAR SET
- 3/4"Ø X 24" REBAR SET AS TIE
- FACE OF 2' HIGH STONE - BARBER'S REF. TIE
- ▲ 1" IRON PIPE FD. (NOT OF RECORD)
- () RECORDED AS

DISTANCES TO TIES MEASURED HORIZONTALLY BY EDM.



CORNER NO. 56A

(E) DESCRIBE ANY MATERIAL DISCREPANCY BETWEEN THE LOCATION OF THE CORNER AS RESTORED OR REESTABLISHED AND THE LOCATION OF THAT CORNER AS PREVIOUSLY RESTORED OR REESTABLISHED BY DISTANCE AND DIRECTION. SHOW THE DISCREPANCY ON THE PLAN VIEW DRAWING UNDER (D), ABOVE. SHOW THE DISTANCES BETWEEN THE CORNER AS PREVIOUSLY RESTORED OR REESTABLISHED AND (1) THE CORNER AS RESTORED OR REESTABLISHED, AND (2) TO AT LEAST 2 OF THE WITNESS MONUMENTS SHOWN ON THE DRAWING IN (D) ABOVE.

NO DISCREPANCIES.

(F) WAS THE CORNER RESTORED THROUGH ACCEPTANCE OF (1) AN OBLITERATED EVIDENCE LOCATION, OR, (2) A FOUND PERPETUATED LOCATION?

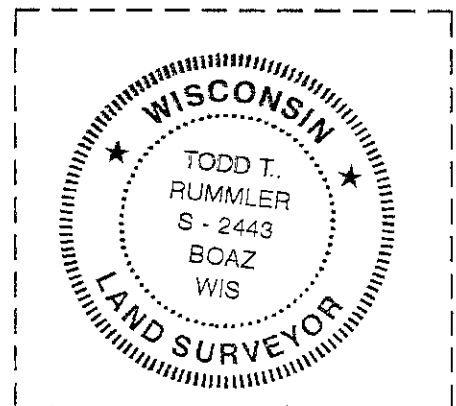
(2) A FOUND PERPETUATED LOCATION.

(G&H) WAS THE CORNER REESTABLISHED THROUGH LOST CORNER PROPORTIONATE METHODS? IF SO, SHOW THE METHOD, INCLUDING THE DIRECTIONS AND DISTANCES TO OTHER PUBLIC LAND SURVEY CORNERS USED AS EVIDENCE OR USED FOR PROPORTIONING IN DETERMINING THE CORNER LOCATION.

NO

AFFIX LAND SURVEYOR SEAL

(I) I, TODD T. RUMMLER, RLS- 2443,
CERTIFY THAT THE CORNER LOCATION SHOWN ON
THIS RECORD WAS DETERMINED BY ME OR UNDER MY
DIRECTION AND CONTROL AND THAT THIS U.S. PUBLIC LAND
SURVEY MONUMENT RECORD IS CORRECT AND COMPLETE
TO THE BEST OF MY KNOWLEDGE AND BELIEF.



SIGNATURE

DATE

Book D, Pg. 71

Barber's 1880

reference rock

for C 1/4 Sec. 16

T8N, R1W

"center face of rock

2 feet high"

N 31 1/2° W, 69 1/2 links

