

GRANT COUNTY CERTIFIED LAND CORNER

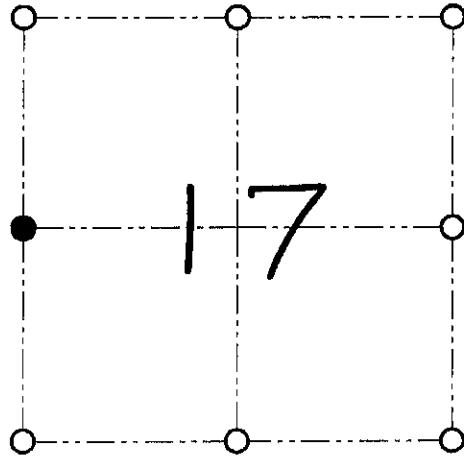
CORNER NUMBER 55

CERTIFICATE:

I, Larry L. Austin, do hereby certify that on the 15th day of February, 2000, I found evidence of the West 1/4 corner of Section 17, Town 8 North, Range 1 West, of the 4th Principal Meridian, and I re-established said corner according to the Wisconsin statutes as shown and described hereon.

Dated this 23rd day of June, 2000

Larry L. Austin
Larry L. Austin S-1903



● = CORNER LOCATION

WEST 1/4 CORNER OF
SECTION 17, T 8 N R 1 W
TOWN OF MUSCODA

HISTORY OF ORIGINAL CORNER ESTABLISHMENT:

Corner was set in 1833 by Harvey Parke.
In 1910 A.W. Appley found evidence of the original bearing trees.

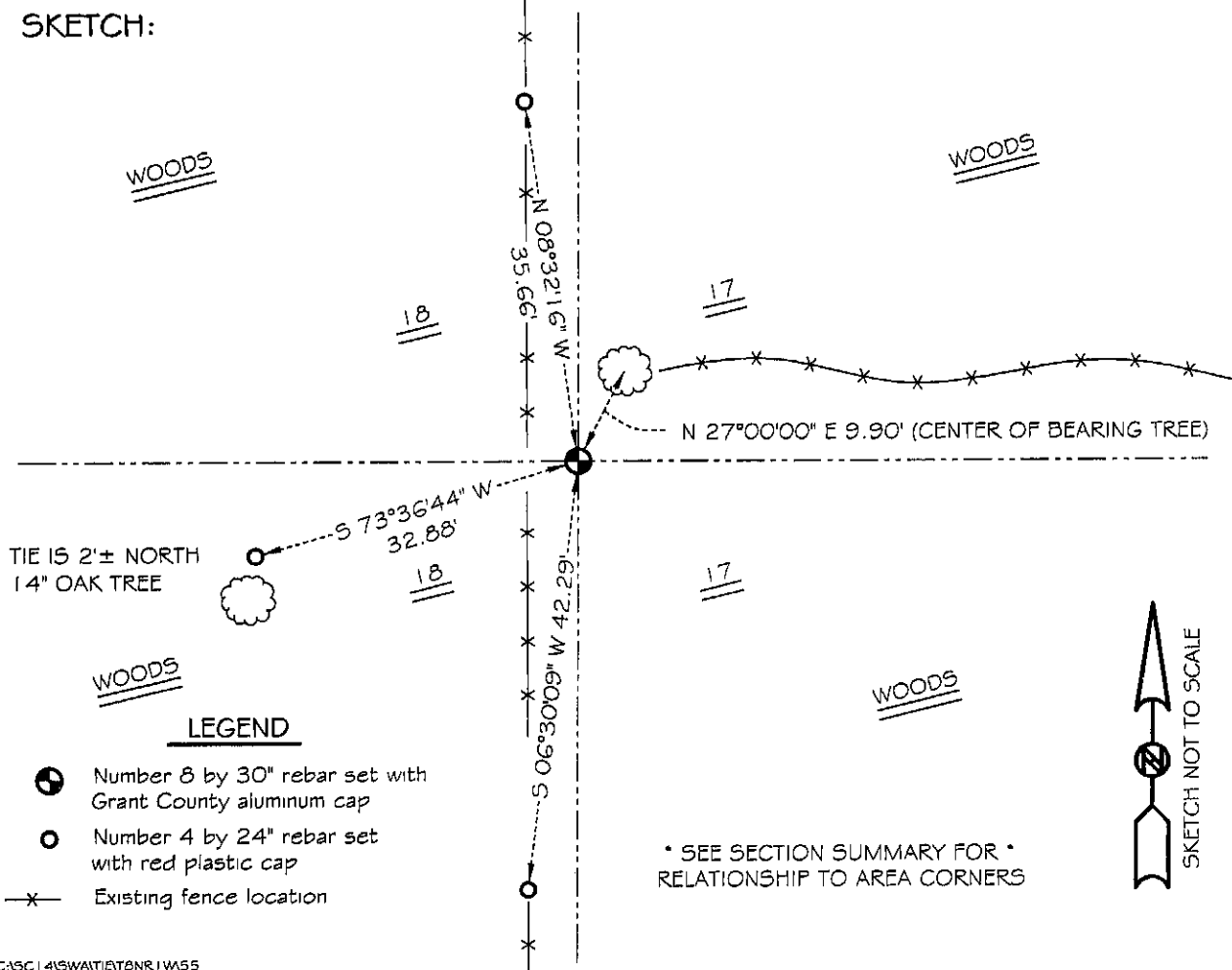
DESCRIPTION OF CORNER EVIDENCE FOUND:

I found an original bearing tree and set the corner at the recorded bearing and distance from the tree. Verified this location using E.D.M. & G.P.S. methods.

DESCRIPTION OF CORNER AND WITNESS MONUMENTS, references and accessories used to perpetuate the original or re-established location of this corner

WITNESS TO THE CORNER LOCATION: SHANE AUSTIN & SHELBY BLINDERT & BOBBY SEDGWICK

SKETCH:



TIE IS 2'± NORTH
14" OAK TREE

LEGEND

- Number 8 by 30" rebar set with Grant County aluminum cap
- Number 4 by 24" rebar set with red plastic cap
- x— Existing fence location

* SEE SECTION SUMMARY FOR *
RELATIONSHIP TO AREA CORNERS

