

GRANT COUNTY CERTIFIED LAND CORNER

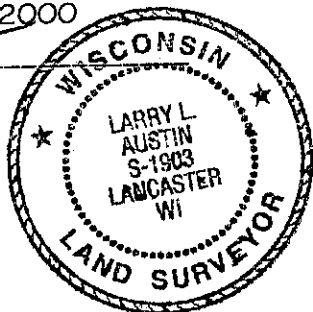
CORNER NUMBER 53

CERTIFICATE:

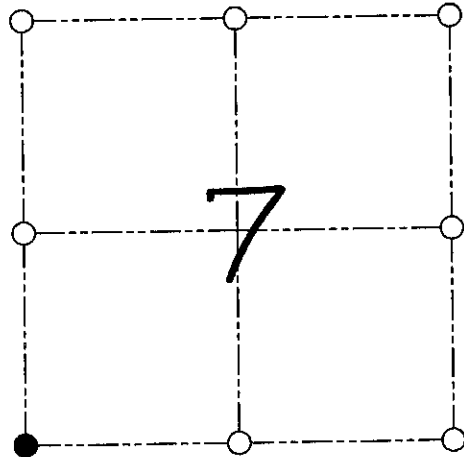
I, Larry L. Austin, do hereby certify that on the 2nd day of February, 2000, I found evidence of the Southwest corner of Section 7, Town 8 North, Range 1 West, of the 4th Principal Meridian, and I re-established said corner according to the Wisconsin statutes as shown and described hereon.

Dated this 23rd day of June, 2000

Larry L. Austin
Larry L. Austin S-1903



SEAL



● = CORNER LOCATION

SOUTHWEST CORNER OF SECTION 7, T 8 N R 1 W TOWN OF MUSCODA

HISTORY OF ORIGINAL CORNER ESTABLISHMENT:

Corner was originally set in 1833 by Sibley. In 1897 Charles Sampson found remains of both bearing trees. In 1981 Robert Lampman located a stone at this location.

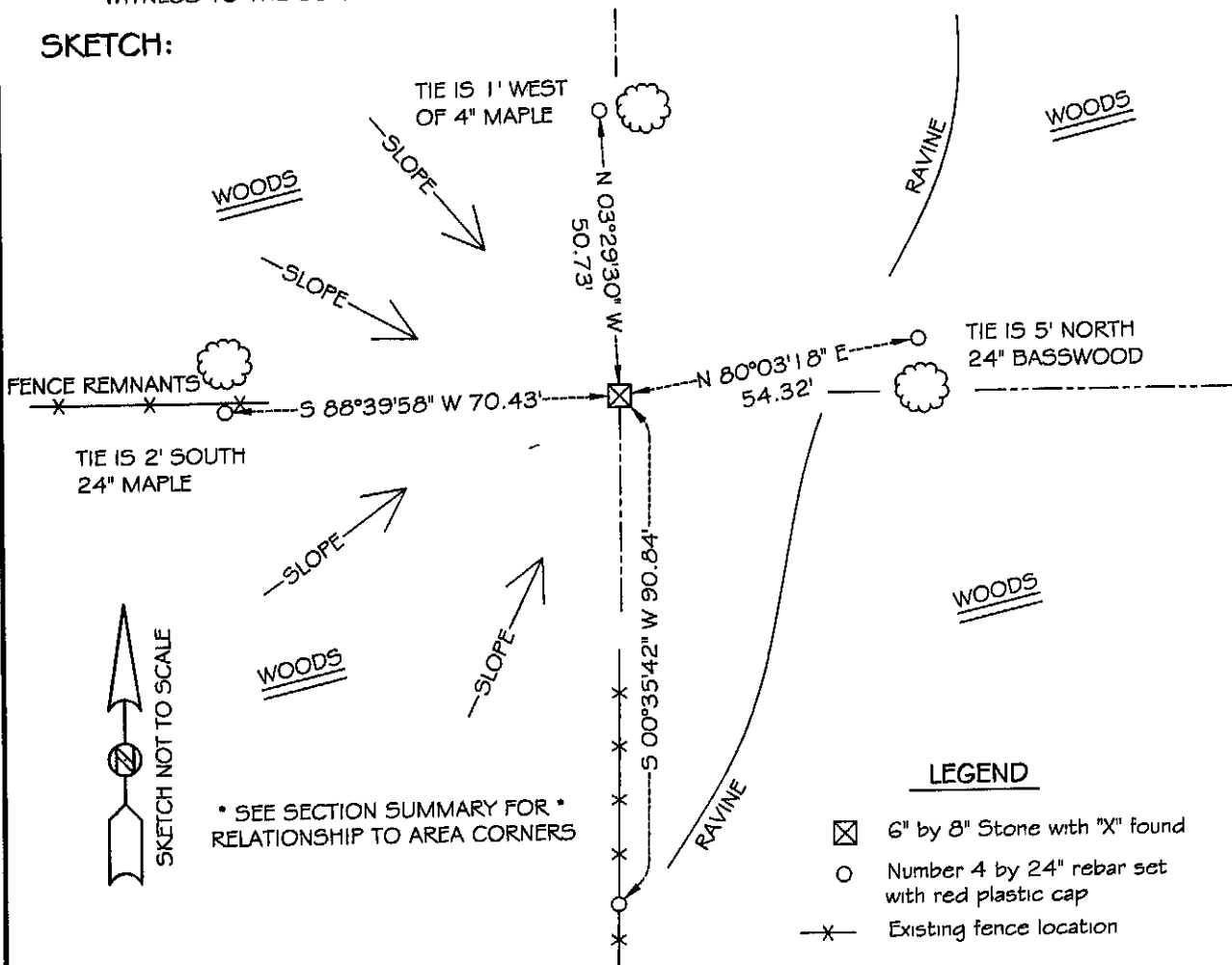
DESCRIPTION OF CORNER EVIDENCE FOUND:

I found the existing stone and accepted its location after an E.D.M. & G.P.S. traverse of the area. The corner fits well with adjoining corners.

DESCRIPTION OF CORNER AND WITNESS MONUMENTS, references and accessories used to perpetuate the original or re-established location of this corner

WITNESS TO THE CORNER LOCATION: SHANE AUSTIN & SHELBY BLINDERT & BOBBY SEDGWICK

SKETCH:



LEGEND

- ⊗ 6" by 8" Stone with "X" found
- Number 4 by 24" rebar set with red plastic cap
- x— Existing fence location