

81051

# GRANT COUNTY CERTIFIED U.S. PUBLIC LAND SURVEY MONUMENT RECORD

INSTRUCTIONS: THIS RECORD SHALL SHOW THE LOCATION OF THE CORNER AND SHALL INCLUDE ALL OF THE FOLLOWING ELEMENTS (A-1)

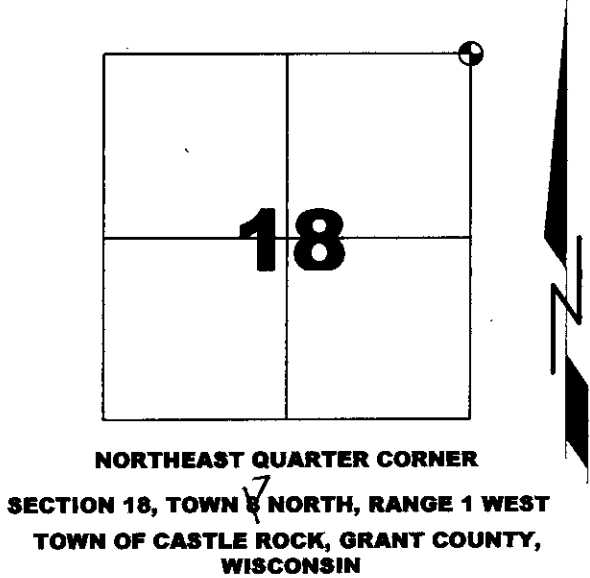
(A) IDENTIFY THE CORNER BY REFERENCE TO THE U.S. PUBLIC LAND SURVEY SYSTEM  
**NORTHEAST QUARTER CORNER SECTION 18, T7N, R1W**

⊕ FOUND 1" X 30" IRON REBAR W/ ALUMINUM CAP

WITNESSES TO CORNER LOCATION

- 1) SEAN M. WALSH
- 2) NOLAN J. WALSH

BASIS OF BEARINGS AND ORIENTAITON  
WISCRS GRANT COUNTY, NAD 83(2011)  
LOCALIZED TO HT. MOD STA. "MOUNT HOPE GPS"  
WITH NAD83 2011 ADJUSTMENT COORDINATE VALUES



(B) A DESCRIPTION OF ANY RECORD EVIDENCE, MONUMENT EVIDENCE, OCCUPATIONAL EVIDENCE, TESTIMONIAL EVIDENCE OR ANY OTHER MATERIAL EVIDENCE CONSIDERED BY THE PROFESSIONAL LAND SURVEYOR AND WHETHER THE MONUMENT WAS FOUND OR PLACED.

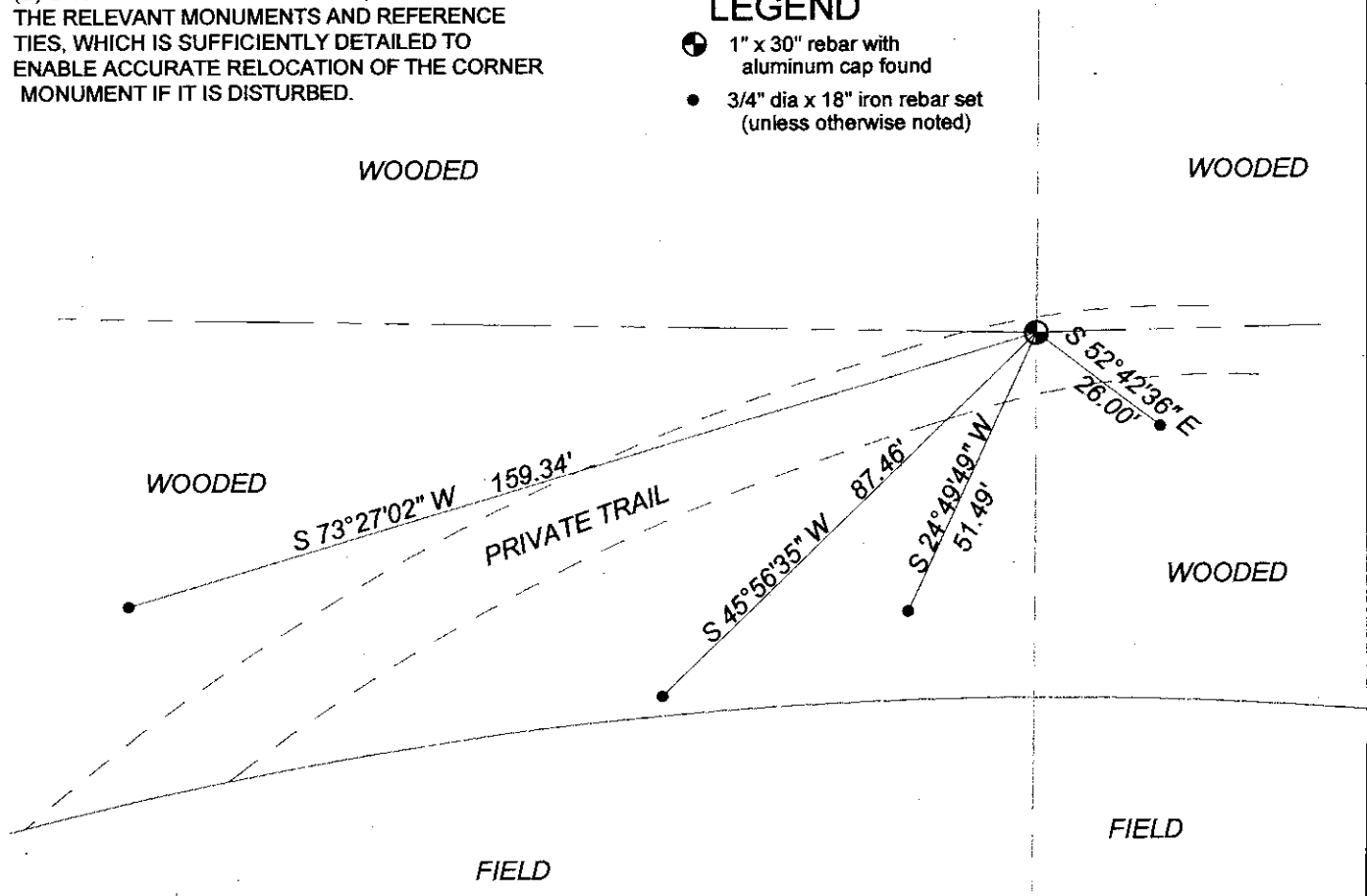
*ON FEBRUARY 14, 2018, IN CONJUNCTION WITH A PRIVATE SURVEY FOR PETE HEIMERMAN, LOCATED IN PART OF SECTION 18, I FOUND A 1" REBAR WITH ALUMINUM CAP IN GOOD CONDITION AT THIS LOCATION. PREVIOUS TIES WERE DISTURBED OR MISSING. I REPLACED THE TIES TO PERPETUATE AS SHOWN BELOW.*

(C) IN THE PLAN VIEW DRAWING BELOW, PROVIDE REFERENCE TO AT LEAST 4 WITNESS MONUMENTS OR, IF THE LOCATION IS WITHIN A MUNICIPALITY, TO AT LEAST 2 WITNESS MONUMENTS. (WITNESS MONUMENTS SHALL BE MADE OF CONCRETE, NATURAL STONE, IRON OR OTHER EQUALLY DURABLE MATERIAL) DESCRIBE WITNESS MONUMENTS

(D) SHOW A PLAN VIEW DRAWING, DEPICTING THE RELEVANT MONUMENTS AND REFERENCE TIES, WHICH IS SUFFICIENTLY DETAILED TO ENABLE ACCURATE RELOCATION OF THE CORNER MONUMENT IF IT IS DISTURBED.

### LEGEND

- ⊕ 1" x 30" rebar with aluminum cap found
- 3/4" dia x 18" iron rebar set (unless otherwise noted)



# GRANT COUNTY CERTIFIED LAND CORNER

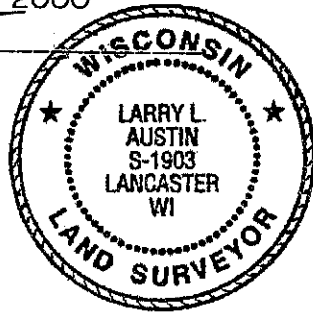
CORNER NUMBER 51

**CERTIFICATE:**

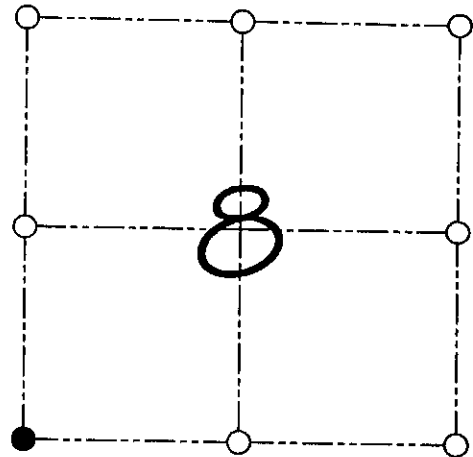
I, Larry L. Austin, do hereby certify that on the 2nd day of December, 1999, I found no evidence of the Southwest corner of Section 8, Town 8 North, Range 1 West, of the 4th Principal Meridian, and I re-established said corner according to the Wisconsin statutes as shown and described hereon.

Dated this 23rd day of June, 2000

*Larry L. Austin*  
Larry L. Austin S-1903



SEAL



● = CORNER LOCATION

SOUTHWEST CORNER OF  
SECTION 8, T 8 N R 1 W  
TOWN OF MUSCODA

**HISTORY OF ORIGINAL CORNER ESTABLISHMENT:**

Corner was originally set in 1833 by Harvey Parke.  
No other record of the corner was found.

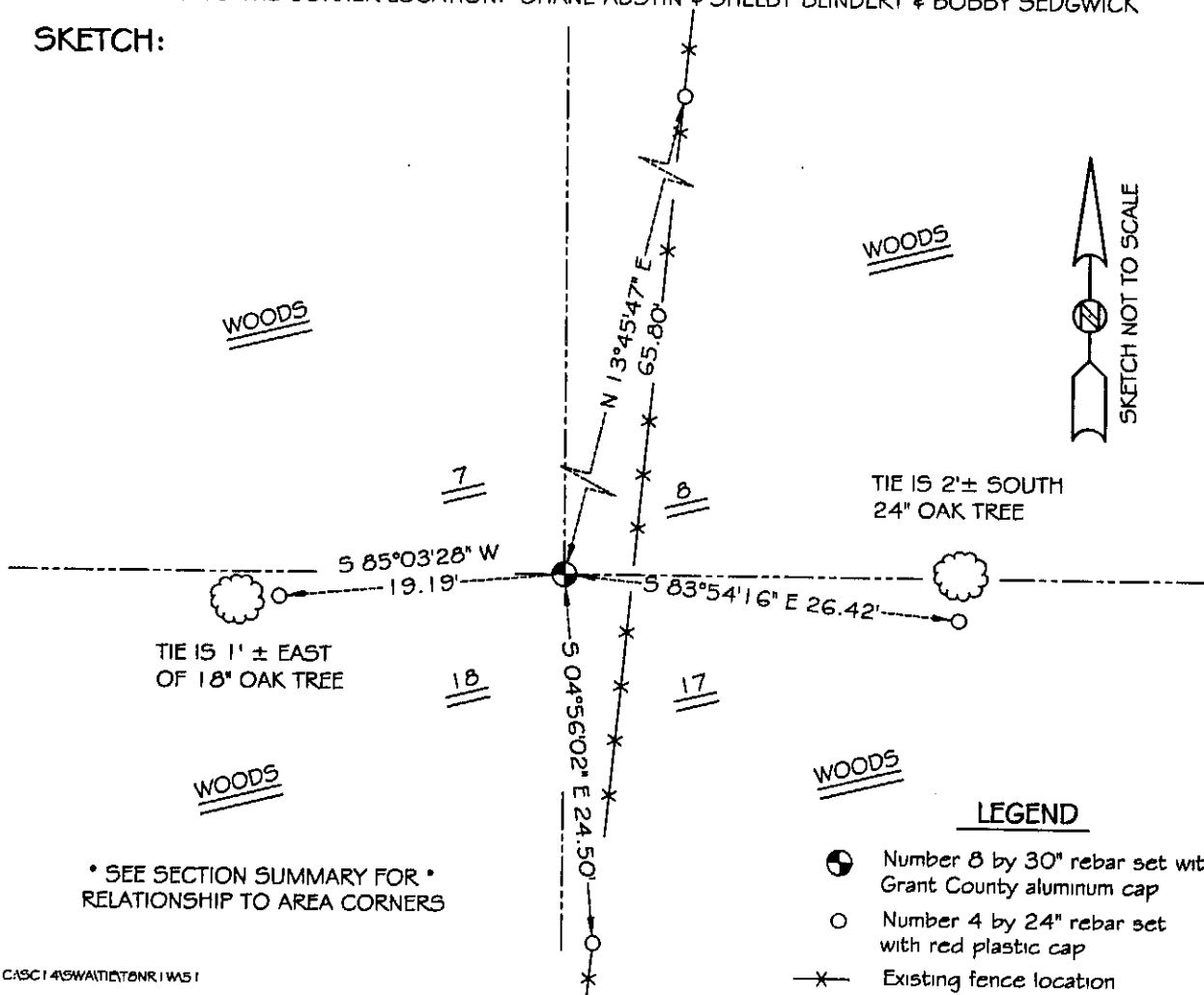
**DESCRIPTION OF CORNER EVIDENCE FOUND:**

I found an existing fence which appeared to go tree to tree and did not accept it. I reset the corner based on proportioning methods along the West line of the Northwest 1/4 of Section 17. Verified this location using E.D.M. & G.P.S. methods.

**DESCRIPTION OF CORNER AND WITNESS MONUMENTS, references and accessories used to perpetuate the original or re-established location of this corner**

WITNESS TO THE CORNER LOCATION: SHANE AUSTIN & SHELBY BLINDERT & BOBBY SEDGWICK

**SKETCH:**



\* SEE SECTION SUMMARY FOR \*  
RELATIONSHIP TO AREA CORNERS

**LEGEND**

- Number 8 by 30" rebar set with Grant County aluminum cap
- Number 4 by 24" rebar set with red plastic cap
- x— Existing fence location