

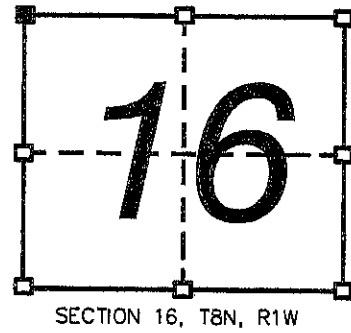
# GRANT COUNTY CERTIFIED U.S. PUBLIC LAND SURVEY MONUMENT RECORD

INSTRUCTIONS: THIS RECORD SHALL SHOW THE LOCATION OF THE CORNER AND SHALL INCLUDE ALL OF THE FOLLOWING NINE ELEMENTS (A THROUGH I)

- (A) IDENTIFY THE CORNER BY REFERENCE TO THE U.S. PUBLIC LAND SURVEY SYSTEM  
 ■ = CORNER MONUMENT RESTORED

WITNESSES TO CORNER LOCATION:  
 ANDREW J. NEEFE  
 TERRY M. PREM

STATE PLANE COORDINATES (WISCONSIN SOUTH ZONE)  
 NORTHING:  
 EASTING:



- (B) DESCRIBE ANY RECORD EVIDENCE, MONUMENT EVIDENCE, OCCUPATIONAL EVIDENCE, TESTIMONIAL EVIDENCE, OR ANY OTHER MATERIAL EVIDENCE YOU CONSIDERED, AND WHETHER THE MONUMENT WAS FOUND OR PLACED.

SAMPSON WENT TO THIS CORNER IN MAY, 1897. HE NOTES "SW ORIGINAL STILL STANDING." MATT JANIAK SET A 3/4" ROD AT THE CORNER AS SHOWN ON HIS TIE SHEET DATED SEPT. 22, 1989. TERRY CORNELL NOTES A 2" PIPE FOUND AT THE CORNER IN NOVEMBER, 2003. I FOUND BOTH JANIAK'S REBAR AND CORNELL'S 2" PIPE. JANIAK MAY HAVE HAD A BAD STAKEOUT WHEN HE SET THE CORNER AS THE REBAR IS LOCATED ABOUT 52' NORTH OF WHERE JANIAK'S OWN SURVEY DATA WOULD PLACE IT. THE 2" PIPE WAS ACCEPTED AS THE CORNER AS THIS ALSO FITS WITH JANIAK'S COMPUTED POSITION FOR THE CORNER.

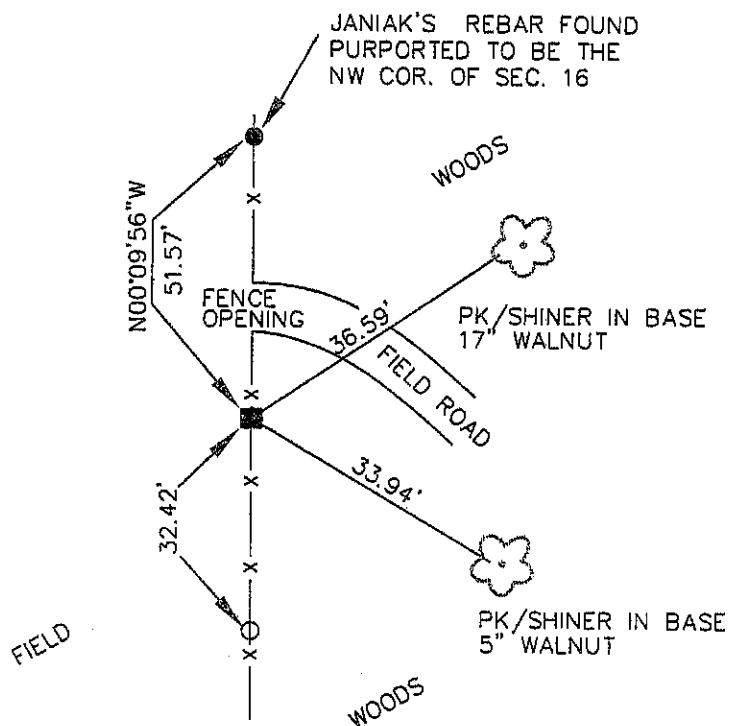
- (C) IN THE PLAN VIEW DRAWING BELOW, PROVIDE REFERENCE TIES TO AT LEAST 4 WITNESS MONUMENTS, OR, IF THE LOCATION IS WITHIN A MUNICIPALITY, TO AT LEAST 2 WITNESS MONUMENTS. (WITNESS MONUMENTS SHALL BE MADE OF CONCRETE, NATURAL STONE, IRON OR OTHER EQUALLY DURABLE MATERIAL). DESCRIBE WITNESS MONUMENTS.

- (D) SHOW A PLAN VIEW DRAWING DEPICTING THE RELEVANT MONUMENTS AND REFERENCE TIES WHICH IS SUFFICIENT IN DETAIL TO ENABLE ACCURATE RELOCATION OF THE CORNER MONUMENT IF IT IS DISTURBED.

### LEGEND

- 2" IRON PIPE FD. NW COR. SEC. 16
- 3/4"Ø REBAR FOUND
- 3/4"Ø X 24" REBAR SET AS TIE

DISTANCES TO TIES TAPED HORIZONTALLY.



CORNER NO. 49

(E) DESCRIBE ANY MATERIAL DISCREPANCY BETWEEN THE LOCATION OF THE CORNER AS RESTORED OR REESTABLISHED AND THE LOCATION OF THAT CORNER AS PREVIOUSLY RESTORED OR REESTABLISHED BY DISTANCE AND DIRECTION. SHOW THE DISCREPANCY ON THE PLAN VIEW DRAWING UNDER (D), ABOVE. SHOW THE DISTANCES BETWEEN THE CORNER AS PREVIOUSLY RESTORED OR REESTABLISHED AND (1) THE CORNER AS RESTORED OR REESTABLISHED, AND (2) TO AT LEAST 2 OF THE WITNESS MONUMENTS SHOWN ON THE DRAWING IN (D) ABOVE.

FROM THE 2" PIPE ACCEPTED AS THE CORNER TO JANIAK'S REBAR PURPORTED TO BE THE CORNER IS N00°09'56"W, 51.57'.

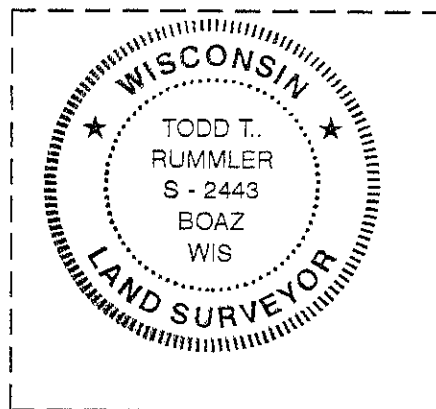
(F) WAS THE CORNER RESTORED THROUGH ACCEPTANCE OF (1) AN OBLITERATED EVIDENCE LOCATION, OR, (2) A FOUND PERPETUATED LOCATION?

(2) A FOUND PERPETUATED LOCATION.


(G&H) WAS THE CORNER REESTABLISHED THROUGH LOST CORNER PROPORTIONATE METHODS? IF SO, SHOW THE METHOD, INCLUDING THE DIRECTIONS AND DISTANCES TO OTHER PUBLIC LAND SURVEY CORNERS USED AS EVIDENCE OR USED FOR PROPORTIONING IN DETERMINING THE CORNER LOCATION.

NO

AFFIX LAND SURVEYOR SEAL



(I) I, TODD T. RUMMLER, RLS- 2443,  
CERTIFY THAT THE CORNER LOCATION SHOWN ON  
THIS RECORD WAS DETERMINED BY ME OR UNDER MY  
DIRECTION AND CONTROL AND THAT THIS U.S. PUBLIC LAND  
SURVEY MONUMENT RECORD IS CORRECT AND COMPLETE  
TO THE BEST OF MY KNOWLEDGE AND BELIEF.

  
SIGNATURE

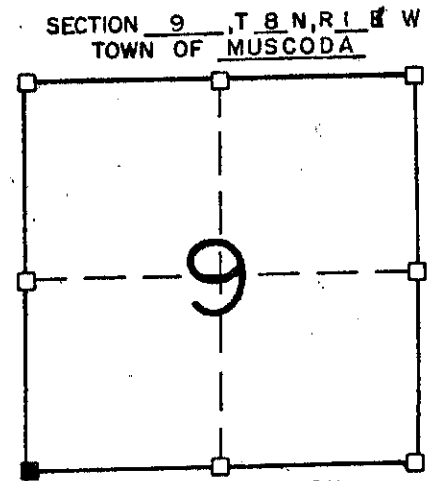
4/1/05  
DATE

# GRANT COUNTY GOVERNMENT CORNER RECORD

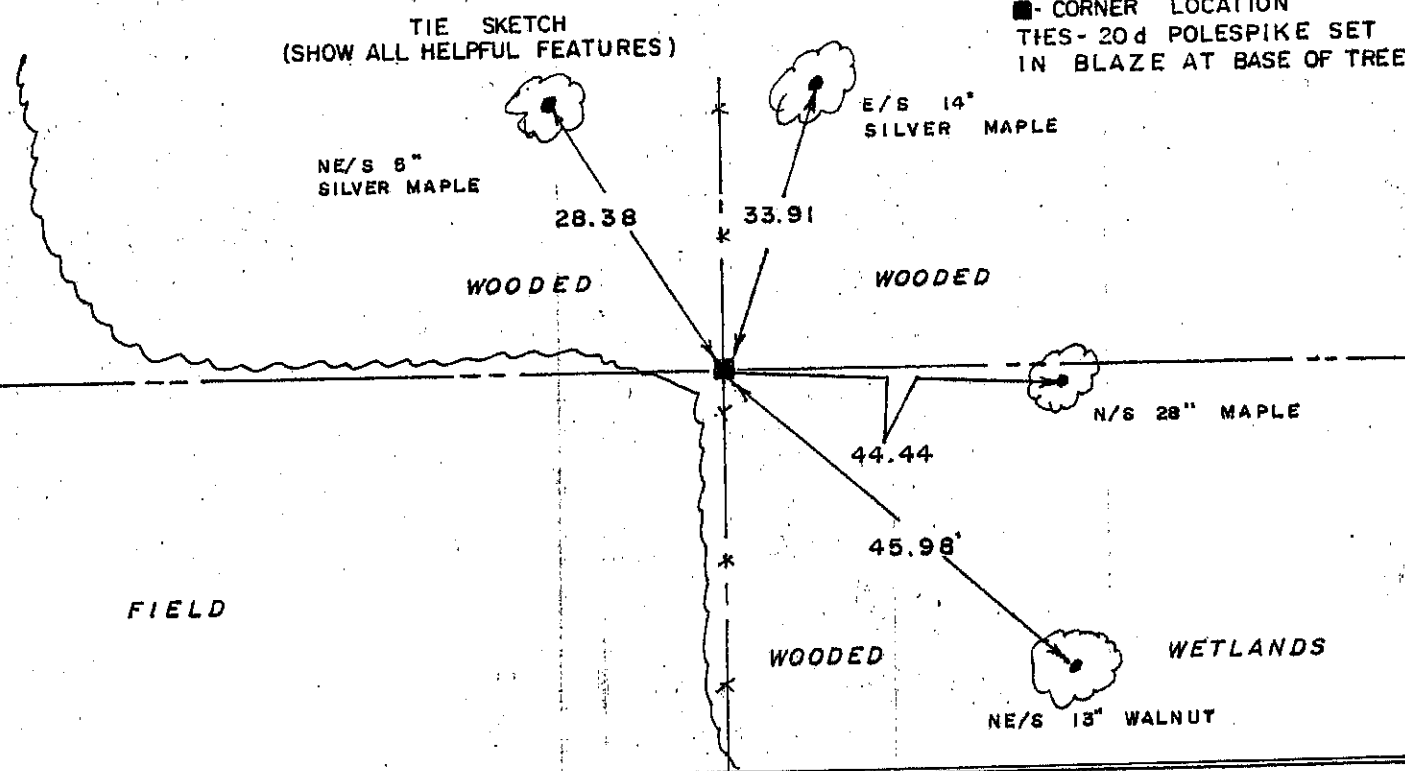
S W CORNER, SECTION 9, TOWNSHIP 8 NORTH, RANGE 1 WEST  
 TOWN, CITY OR VILLAGE OF MUSCODA  
 TYPE OF MONUMENT: 3/4" X 24" IRON ROD SET ELEVATION-M.S.L. DATUM \_\_\_\_\_  
 STATE PLANE COORDINATES: N \_\_\_\_\_  
 WISCONSIN SOUTH ZONE E \_\_\_\_\_

WITNESSES TO CORNER LOCATION

SEAN M. WALSH  
PATRICK J. DEDERICH



■ - CORNER LOCATION  
 TIES - 20d POLESPIKE SET  
 IN BLAZE AT BASE OF TREE



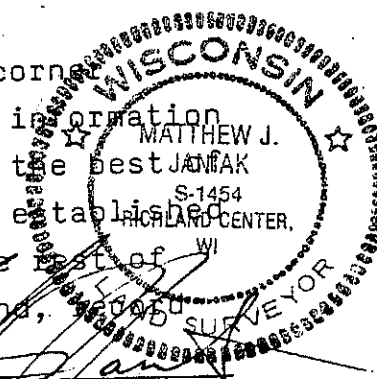
SURVEYOR'S CERTIFICATE  
 STATE OF WISCONSIN )  
 COUNTY ) SS

SEAL S- 1454

I, Matthew J. Janiak, DO HEREBY CERTIFY THAT the above corner  
has been established under my direction according to information  
shown hereon and that this information is correct to the best of  
my information knowledge and belief. this corner was established  
at the occupied location which fit very well with the  
Section 9, no other evidence of its location was found,  
or physical.

DATED THIS 22nd DAY OF Sept, 1989

Matthew J. Janiak  
 REGISTERED LAND SURVEYOR



CORNER CODE