

GRANT COUNTY GOVERNMENT CORNER RECORD

S E CORNER SECTION 9, TOWNSHIP 8 NORTH, RANGE 1 WEST
 TOWN, CITY OR VILLAGE OF MUSCOOTA

TYPE MONUMENT: 3/4" X 24" IRON ROD SET ELEVATION - M.S.L. DATUM _____

STATE PLANE COORDINATES: N _____

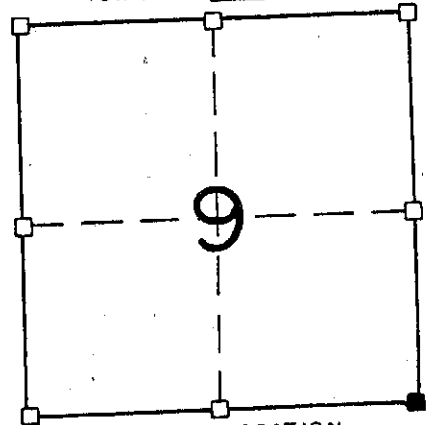
WISCONSIN SOUTH ZONE E _____

WITNESSES TO CORNER LOCATION

SEAN M. WALSH

PATRICK J. DEDICH

SECTION 9, T 8 N, R 1 W
 TOWN OF _____



NORTH

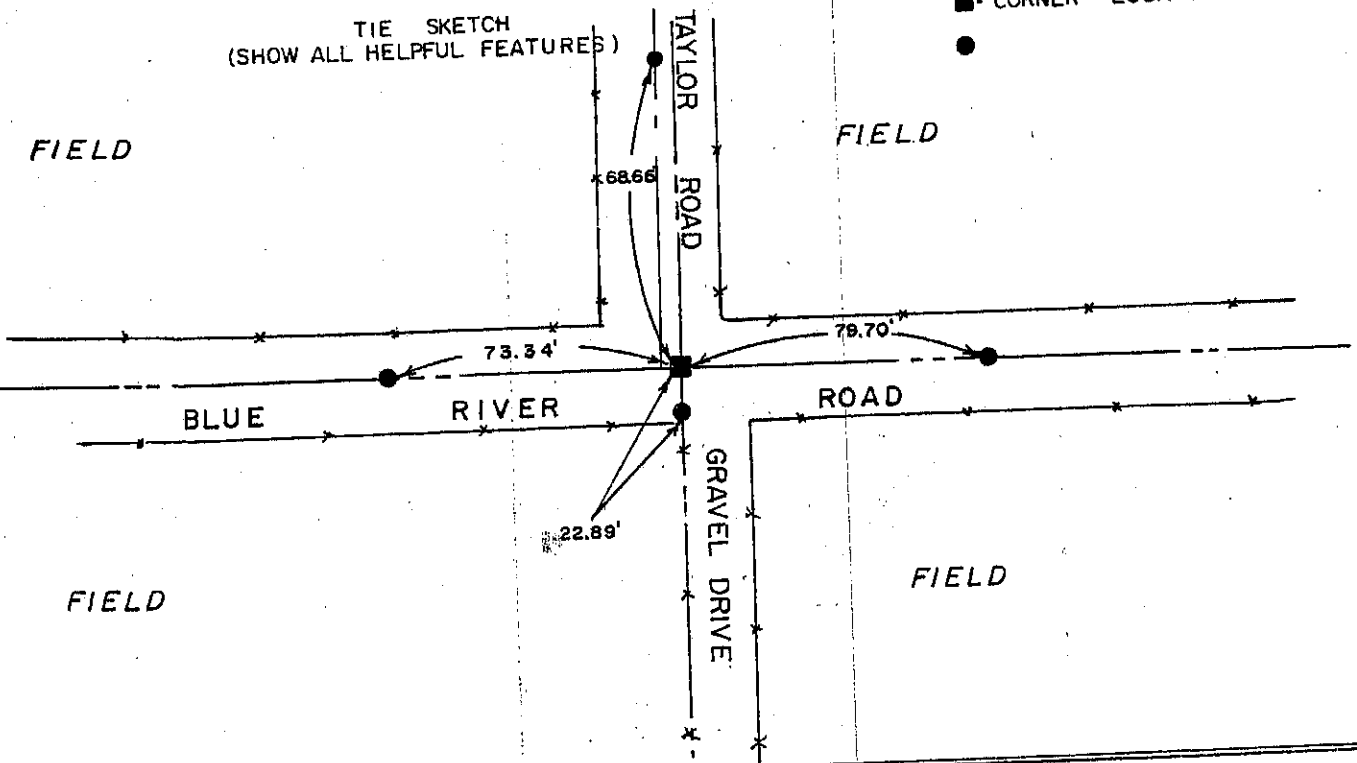
TIE SKETCH
 (SHOW ALL HELPFUL FEATURES)

FIELD

FIELD

FIELD

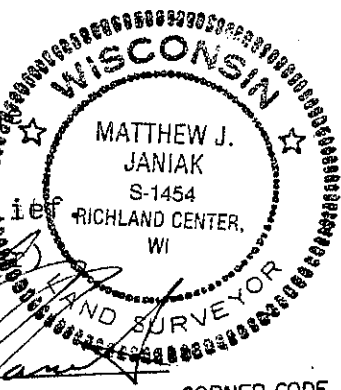
FIELD



SURVEYOR'S CERTIFICATE
 STATE OF WISCONSIN)
 COUNTY) SS

SEAL S-1454

I, Matthew J. Janiak, DO HEREBY CERTIFY THAT the above corner
 has been perpetuated under my direction according to the
 information shown hereon and that such information is
 correct to the best of my information knowledge and belief



DATED THIS 22ND DAY OF SEPT, 19 89

Matthew J. Janiak
 REGISTERED LAND SURVEYOR

CORNER CODE

P.47

(OVER)

This corner was perpetuated at the location of a 3/4" in rod found. The iron rod has been used in other subsequent surveys and fits well with the field measurement of the rest of section.