

GRANT COUNTY CERTIFIED LAND CORNER

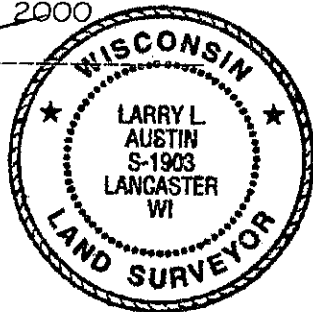
CORNER NUMBER 45

CERTIFICATE:

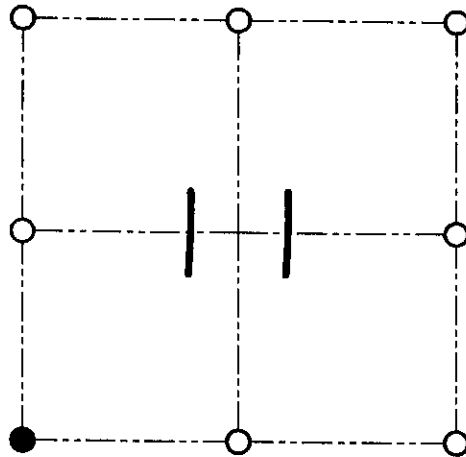
I, Larry L. Austin, do hereby certify that on the 7th day of December, 1999, I found evidence of the Southwest corner of Section 11, Town 8 North, Range 1 West, of the 4th Principal Meridian, and I re-established said corner according to the Wisconsin statutes as shown and described hereon.

Dated this 23rd day of June, 2000

Larry L. Austin
Larry L. Austin S-1903



SEAL



● = CORNER LOCATION

SOUTHWEST CORNER OF
SECTION 11, T 8 N R 1 W
TOWN OF MUSCODA

HISTORY OF ORIGINAL CORNER ESTABLISHMENT:

Corner was originally set in 1833 by Harvey Parke. In 1856 Overton tied to the corner. In 1994 Greg Jewell found a Number 8 iron bar.

DESCRIPTION OF CORNER EVIDENCE FOUND:

I found a Number 6 rebar at this location.
I accepted this location after an E.D.M. & G.P.S. traverse of the area.

DESCRIPTION OF CORNER AND WITNESS MONUMENTS, references and accessories used to perpetuate the original or re-established location of this corner

WITNESS TO THE CORNER LOCATION: SHANE AUSTIN & SHELBY BLINDERT & BOBBY SEDGWICK

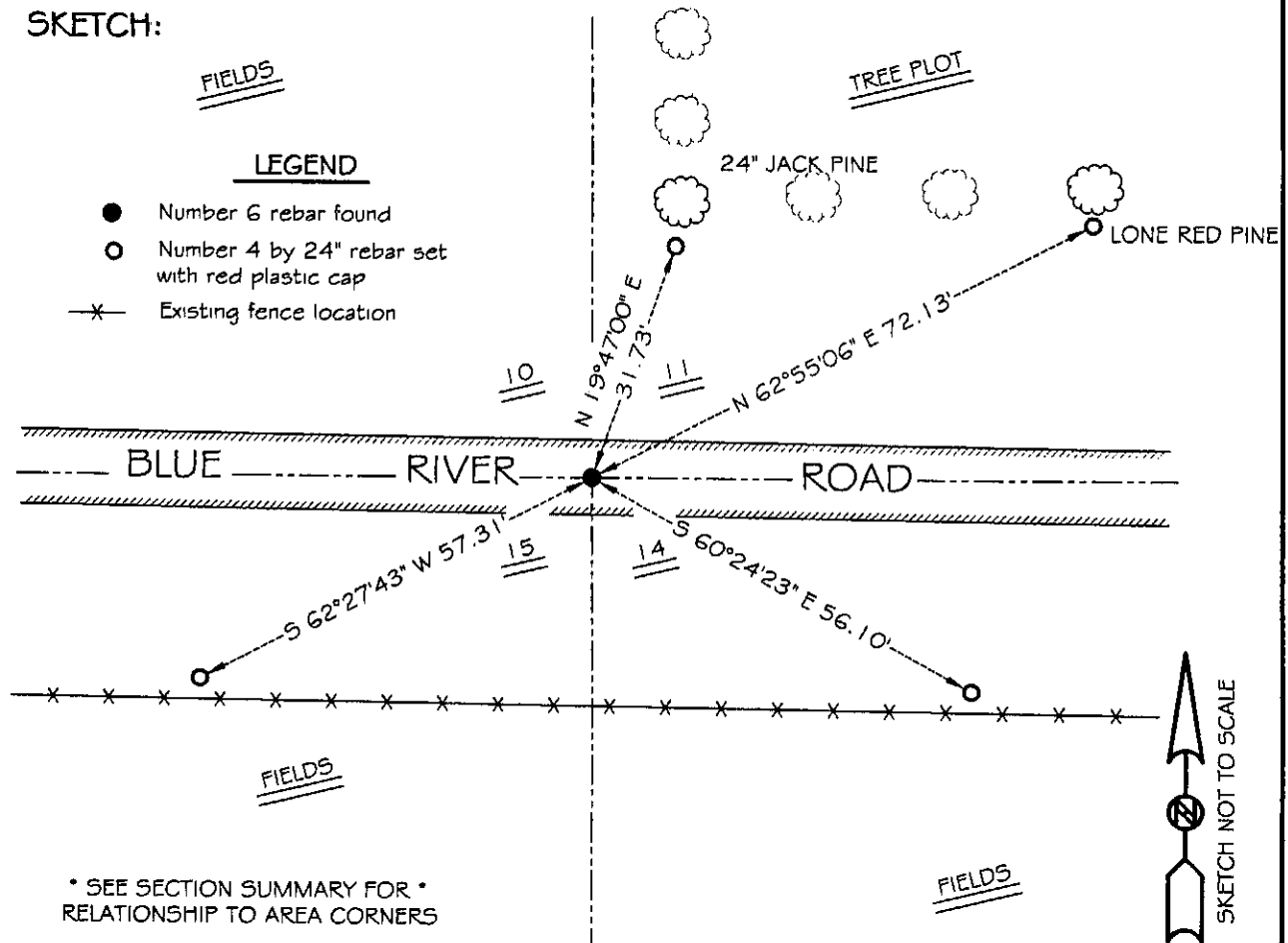
SKETCH:

FIELDS

LEGEND

- Number 6 rebar found
- Number 4 by 24" rebar set with red plastic cap
- x— Existing fence location

TREE PLOT



* SEE SECTION SUMMARY FOR *
RELATIONSHIP TO AREA CORNERS

