

81044

# U.S. PUBLIC LAND SURVEY MONUMENT RECORD - GRANT COUNTY, WI

Section 11, Town 8 North Range 1 West, Town of Muscoda (a)

NOTE: This form is intended and designed to fulfill all requirements of the Wisconsin Administrative Code Chapter A-E 7.08, U.S. Public Land Survey Monument Record (3) (a) (b) (c) (d) (e) (f) (g) (h) (i).

**RECEIVED**

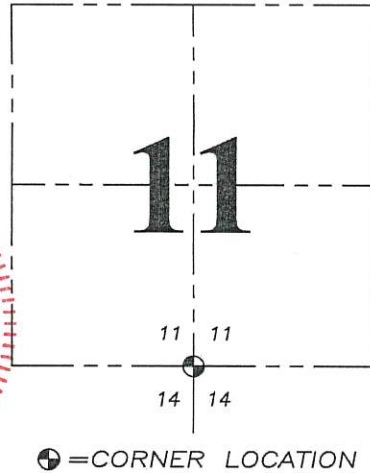
By Land Information Office at 2:47 pm, Sep 16, 2019

CERTIFICATE: (i)

I, Aaron J. Austin, Wisconsin Professional Land Surveyor, do hereby certify that the corner location on this record was determined by me and/or under my direct supervision and that this U.S. Public Land Survey Monument Record is correct and complete to the best of my knowledge and belief.

Dated this 18th day of July, 2019.

*Aaron J. Austin*  
Aaron J. Austin, S-2922



Grant County Coordinates:  
NAD 83 (2011)  
Northing: 643,278.53  
Easting: 885,928.52

HISTORY OF CORNER ESTABLISHMENT:

Original corner was set in 1833 by Sibley.  
Robert Lampman found a stone monument and prepared a Survey Monument Record.

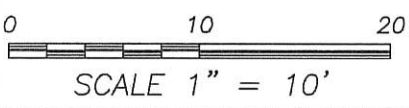
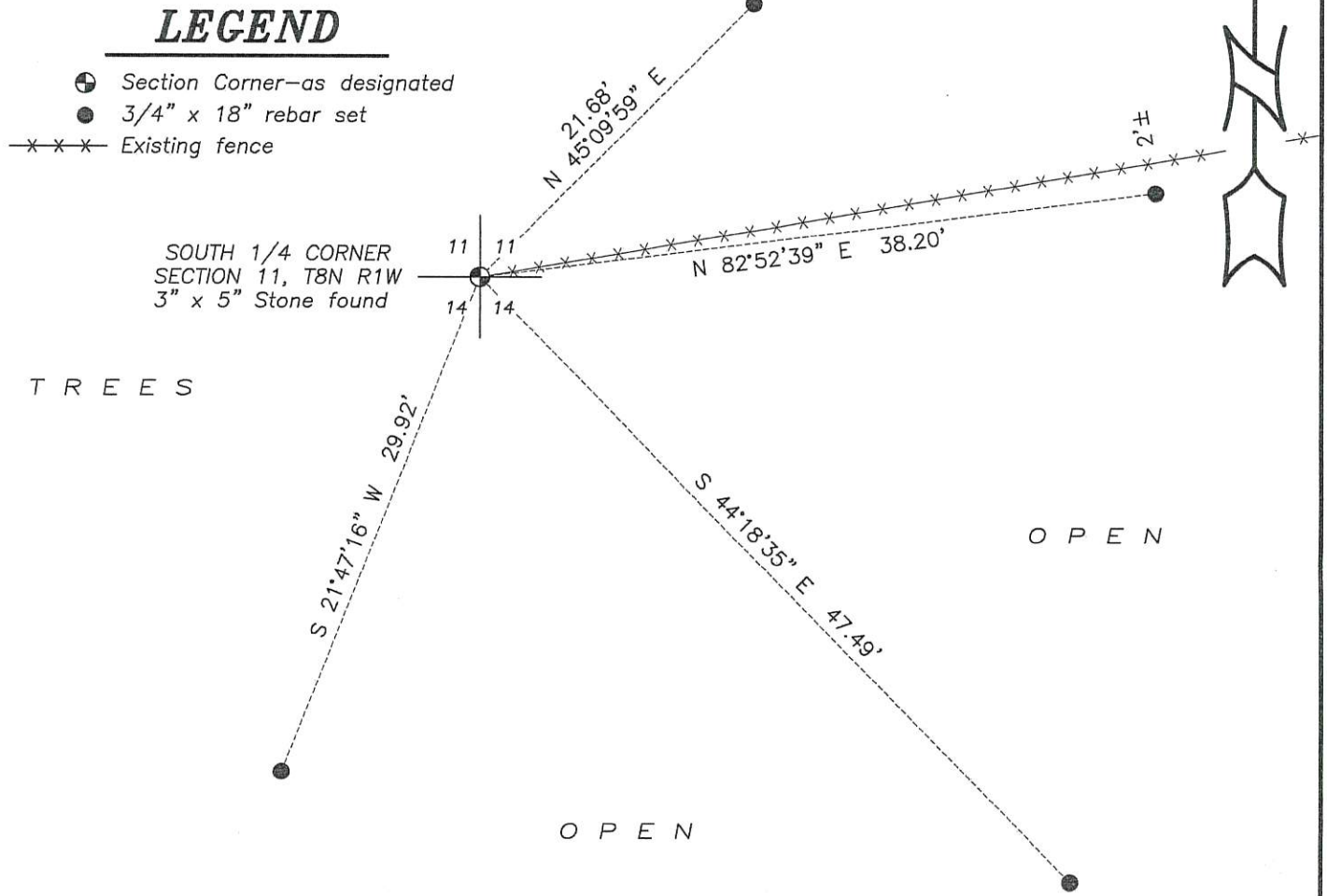
DESCRIPTION OF CORNER EVIDENCE FOUND: (b) (f) (g) (h)

I found a 3"x 5" stone next to a gate post. I set four witness corners after I verified the Monument's location with G.P.S. and E.D.M. methods.

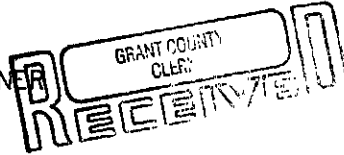
DESCRIPTION OF CORNER AND WITNESS MONUMENTS: references and accessories used to perpetuate the original or re-established location of this corner. (c) (d) (e)

Witnesses to corner location Shane Austin, Owen Austin.  
Drawn by: Owen Austin

SKETCH:



CERTIFIED LAND CORNER



JUL 26 1989

STATE OF WISCONSIN ) S.S.  
COUNTY OF GRANT )

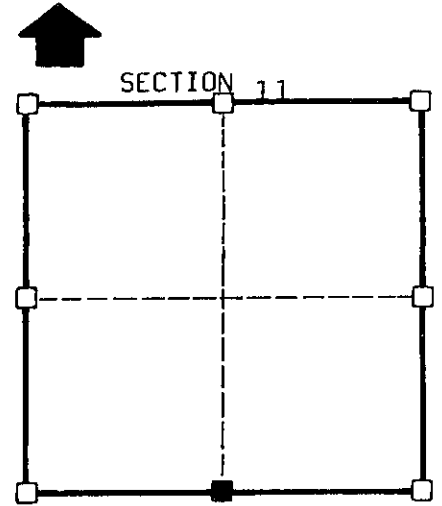
JUL 26 1989

CERTIFICATE

I, Robert M. Lampman, do hereby certify that on the 23rd day of March 1989, I found (evidence) ~~(XXXXXX)~~ of the S 1/4 corner of Section 11, T 8 N, R 1 W, Fourth Principal Meridian, and I re-established said corner according to the Wisconsin Statutes as shown and described hereon.

Dated this 28th day of March 19 89

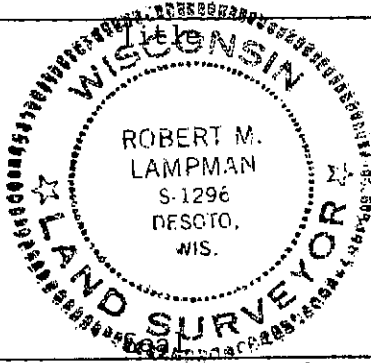
Robert M. Lampman S-1296



■ = corner location

T 8 N R 1 W

Town of: Muscoda



History of original corner establishment:  
Original survey by Sibley in 1833.

Description of corner evidence found:  
Found existing stone used on former surveys.

Description of corner and witness monuments, references and accessories used to perpetuate the original or re-established location of this corner:

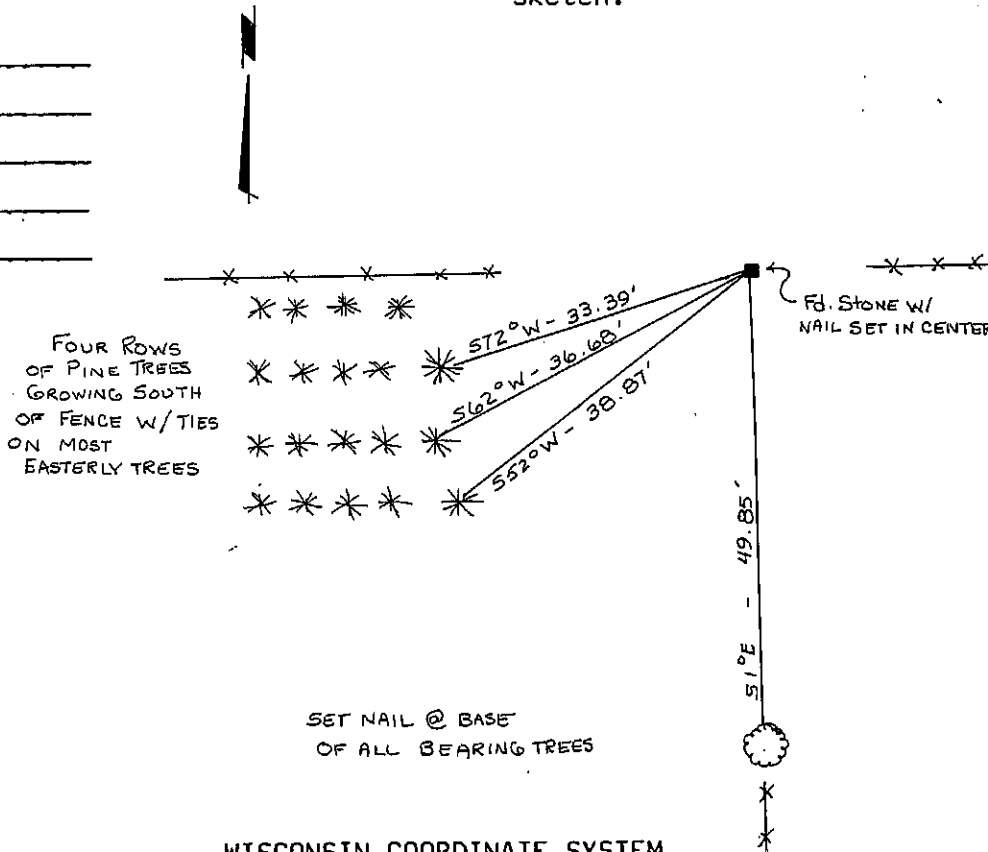
Witnesses to corner location:

Robert M. Lampman

Jerry L. Torgerson

Jessica A. Zamor

Sketch:



SURVEY CONTROL ORDER

Horizontal

Vertical

Corner	East(X)	North(Y)	Elevation(Z)	Zone
Control Sta. Name				

WISCONSIN COORDINATE SYSTEM