

GRANT COUNTY CERTIFIED LAND CORNER

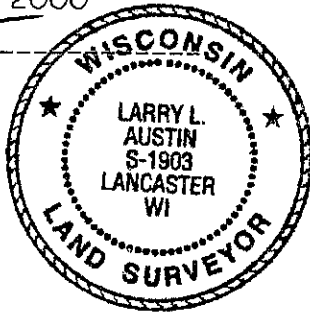
CORNER NUMBER 39

CERTIFICATE:

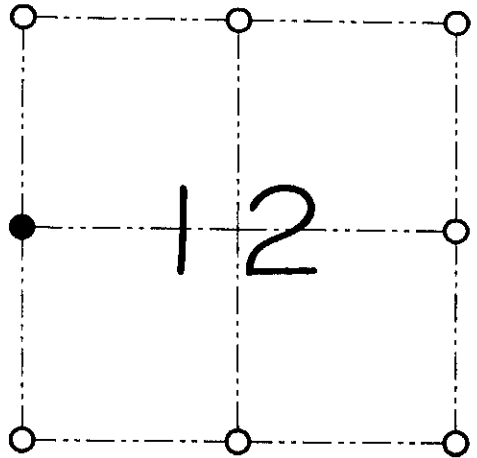
I, Larry L. Austin, do hereby certify that on the 2nd day of February, 2000, I found evidence of the West 1/4 corner of Section 12, Town 8 North, Range 1 West, of the 4th Principal Meridian, and I re-established said corner according to the Wisconsin statutes as shown and described hereon.

Dated this 23rd day of June, 2000

Larry L. Austin
Larry L. Austin S-1903



SEAL



● = CORNER LOCATION

WEST 1/4 CORNER OF
SECTION 12, T 8 N R 1 W
TOWN OF MUSCODA

HISTORY OF ORIGINAL CORNER ESTABLISHMENT:

Corner was originally set in 1833 by Harvey Parke.
Matthew Janiak set a 1.5" iron pipe in 1989.

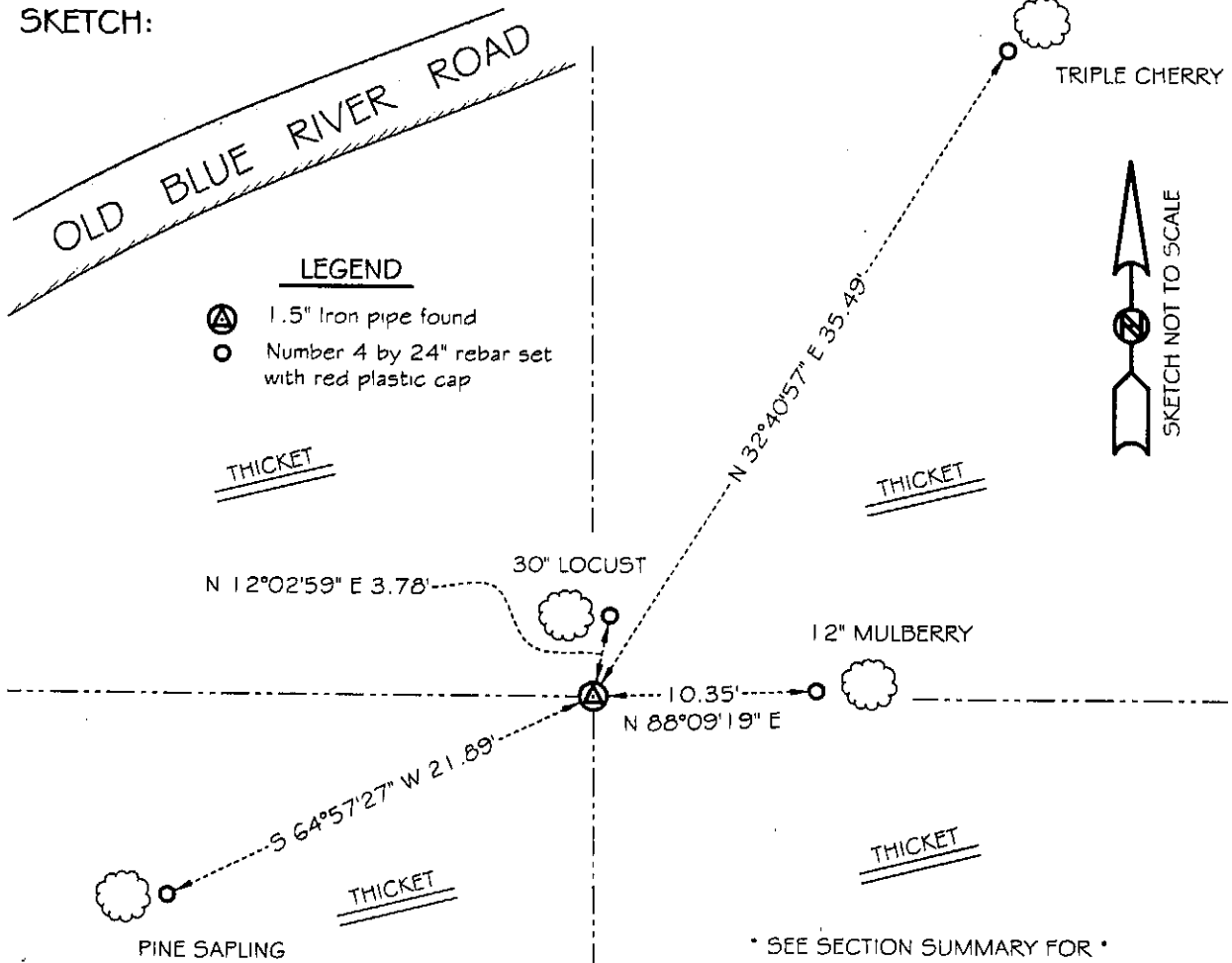
DESCRIPTION OF CORNER EVIDENCE FOUND:

I found and accepted the 1.5" iron pipe. I set new ties due to the others being lost. Verified this location using E.D.M. & G.P.S. methods.

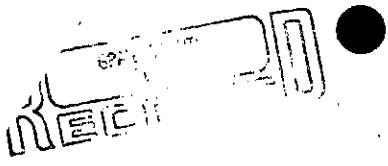
DESCRIPTION OF CORNER AND WITNESS MONUMENTS, references and accessories used to perpetuate the original or re-established location of this corner

WITNESS TO THE CORNER LOCATION: SHANE AUSTIN & SHELBY BLINDERT & BOBBY SEDGWICK

SKETCH:



* SEE SECTION SUMMARY FOR *
RELATIONSHIP TO AREA CORNERS



AUG 1 1989
RECEIVED

AUG 1 1989

GRANT COUNTY GOVERNMENT CORNER RECORD

E 1/4 CORNER, SECTION 11, TOWNSHIP 8 NORTH, RANGE 1 W
TOWN, CITY OR VILLAGE OF MUSCODA

TYPE OF MONUMENT: 1-1/2" IRON PIPE ELEVATION-M.S.L. DATUM

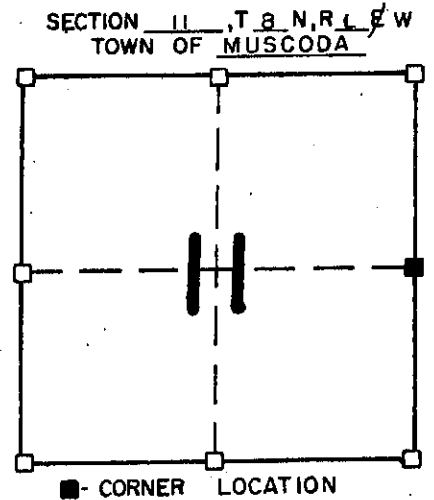
STATE PLANE COORDINATES: N

WISCONSIN SOUTH ZONE E

WITNESSES TO CORNER LOCATION

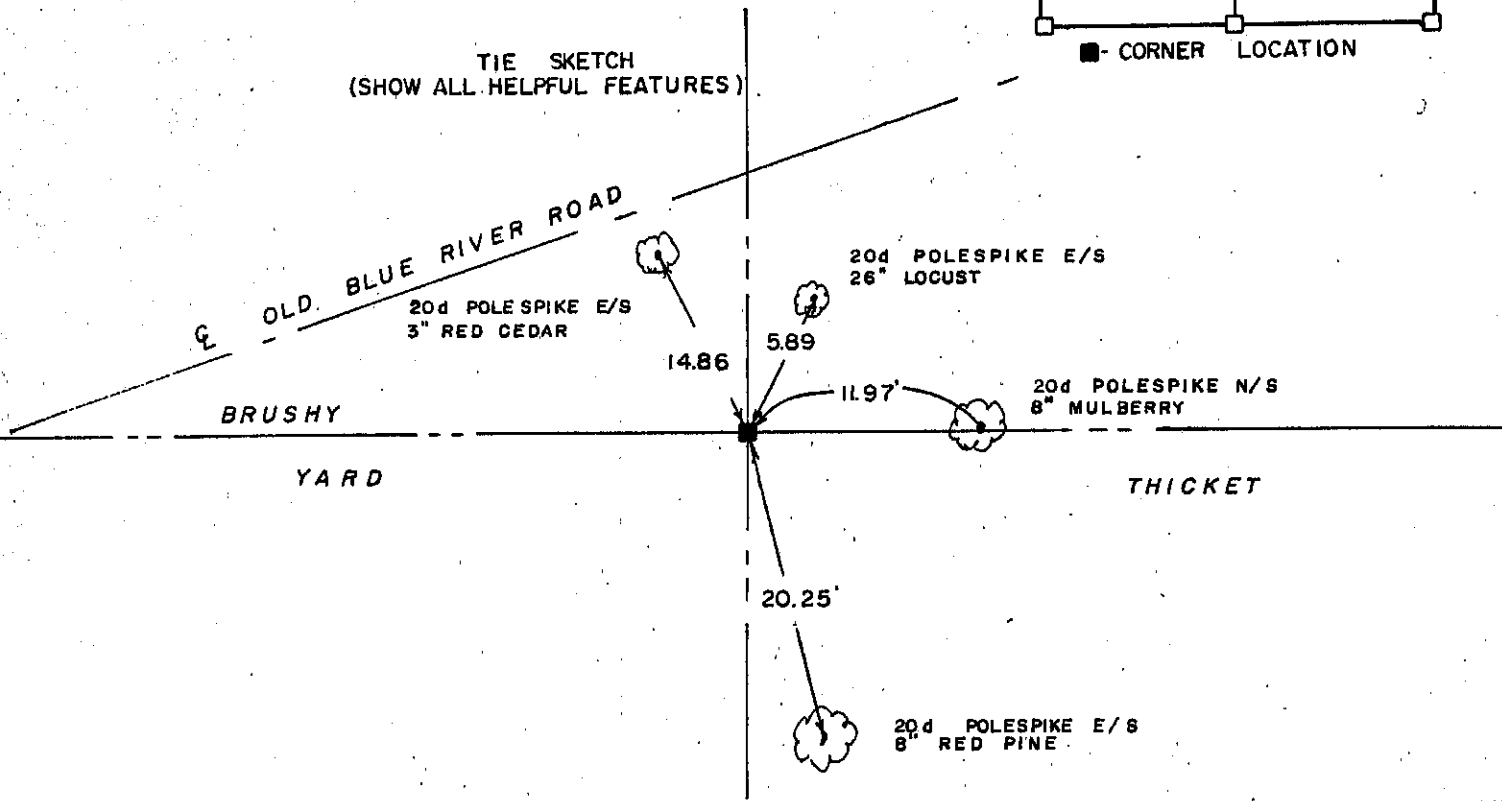
MATTHEW J. JANIAK

SEAN M. WALSH



NORTH

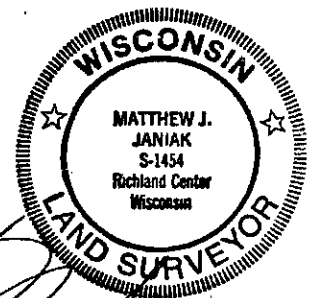
TIE SKETCH
(SHOW ALL HELPFUL FEATURES)



SURVEYOR'S CERTIFICATE
STATE OF WISCONSIN)
COUNTY) SS

SEAL S- 1454

I, Matthew J. Janiak, DO HEREBY CERTIFY THAT I located an iron pipe (1 1/2" diameter) at the above corner and that I took the above reference information to perpetuate this location. That this location and information are correct to the best of my knowledge and belief.



DATED THIS 18th DAY OF May, 19 89

REGISTERED LAND SURVEYOR

CORNER CODE

(OVER)

39