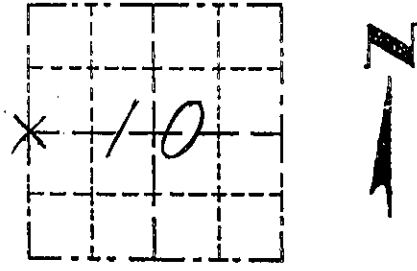


REC'D DEC 2 1998

Survey Monument Record

TYPE OF MONUMENT 3/4" REBAR FOUND
STATE PLANE COORDINATES: N
E
ELEVATION - M.S.L. DATUM:
THETA ANGLE:
FIELD BOOK: 98-8
PAGE

CORNER NO.
SECTION 10
TOWN 8N
RANGE 1W



BASIS FOR MONUMENT LOCATION

(Use reverse side if necessary)
Show info such as: History of corner, with reference to Vol. and pg., dates, surveyor; exact description of monument replaced; location computed, by taped or EDM traverse; landowner, remarks, etc.

LOCATION (Indicated by "X")
FOUND PERPETUATED LOCATION
OBLITERATED EVIDENCE LOCATION
LOST CORNER (RESTORED BY PROPORTIONATE METHODS)

A 3/4" rebar found at the W 1/4 corner as computed from measurements recorded in C.S.M.'s 268 & 269 (BREF) was accepted as the corner's location. This location provided better relationships to the original government records than an existing rebar set by Janiak in the road centerline. Many area descriptions were actually measured off the road centerline using standard B20's and 660's and due to the small size of the section, this has created many problems in the middle.

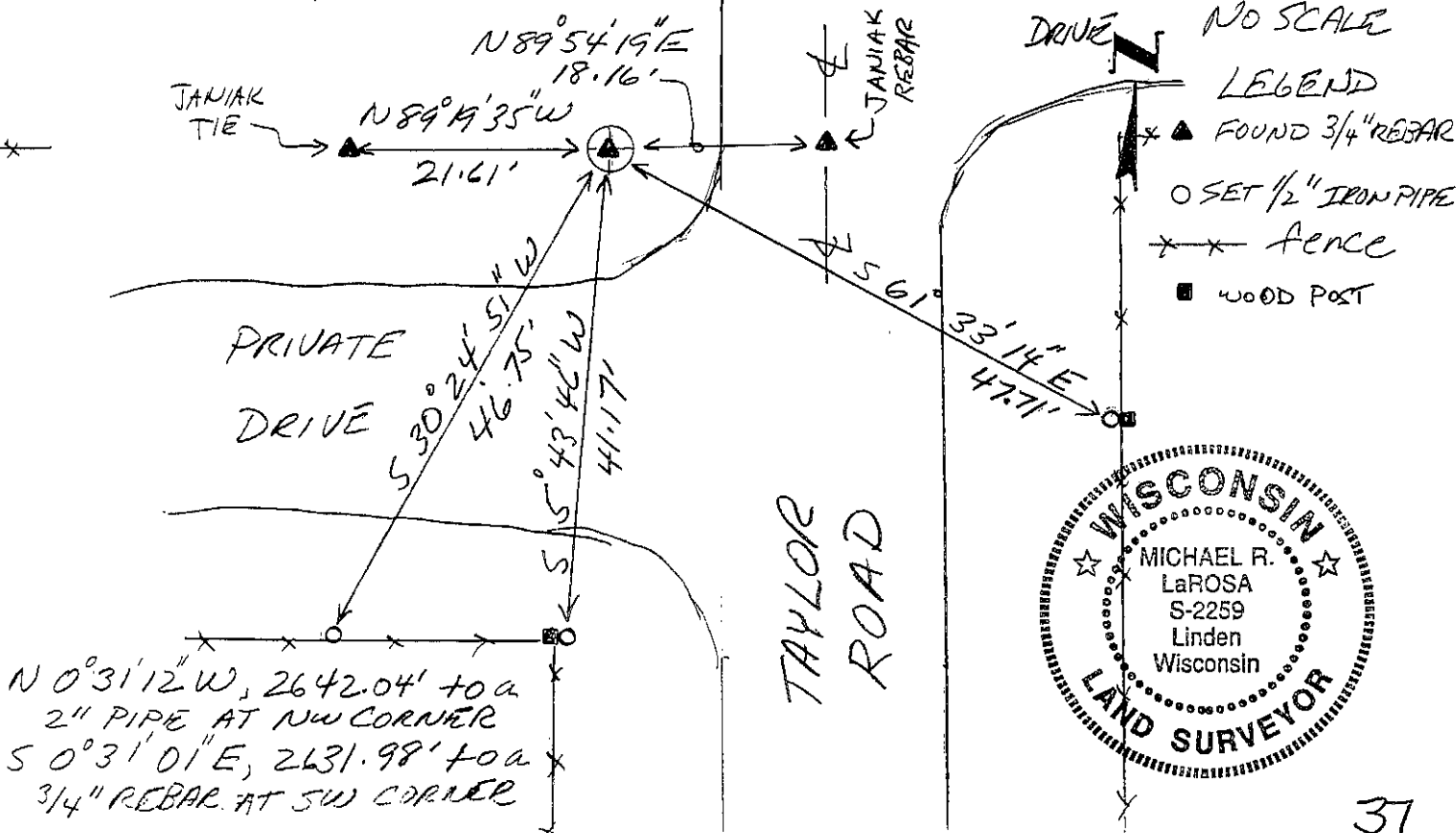
CERTIFIED CORRECT TO THE BEST OF MY KNOWLEDGE AND BELIEF

Michael R. LaRosa
Registered Land Surveyor

DATE: 10/28/1998

TIE SKETCH

Show at least: (4) ties and monument



# GRANT COUNTY GOVERNMENT CORNER RECORD

E 1/4 CORNER, SECTION 9, TOWNSHIP 8 NORTH, RANGE 1 WEST,  
TOWN, CITY OR VILLAGE OF MUSCODA

TYPE OF MONUMENT: 3/4" X 24" IRON ROD ELEVATION-M.S.L. DATUM \_\_\_\_\_

STATE PLANE COORDINATES: N \_\_\_\_\_

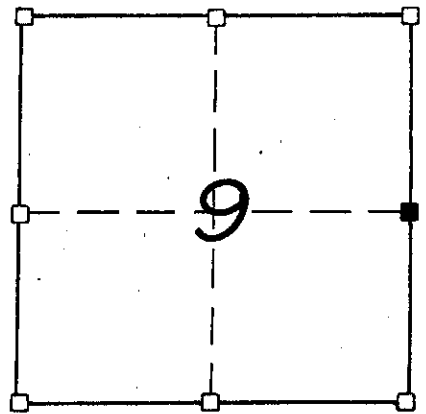
WISCONSIN SOUTH ZONE E \_\_\_\_\_

WITNESSES TO CORNER LOCATION

\_\_\_\_\_  
SEAN M. WALSH

\_\_\_\_\_  
PATRICK J. DEDERICH

SECTION 9, T 8 N, R 1 W  
TOWN OF MUSCODA



- - CORNER LOCATION
- - 3/4" IRON ROD SET
- - 1/2" IRON ROD FOUND
- ▲ - RAILROAD SPIKE SET

TIE SKETCH  
(SHOW ALL HELPFUL FEATURES)

X - MAS TREES

FIELD

TAYLOR ROAD

39.90'

63.77'

64.36'

24.16'

YARD

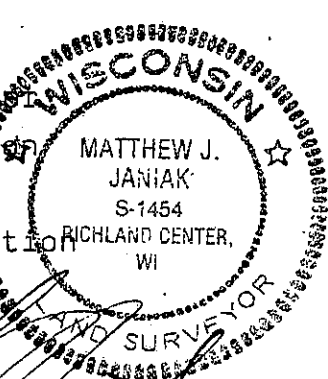
WOODED

SURVEYOR'S CERTIFICATE  
STATE OF WISCONSIN )  
COUNTY ) SS

SEAL S-1454

I, Matthew J. Janiak, DO HEREBY CERTIFY THAT the above corner  
has been established and perpetuated under my direction  
according to the information shown hereon and that  
such information is correct to the best of my information  
knowledge and belief.

(over)



DATED THIS 22ND DAY OF SEPT., 19 89

REGISTERED LAND SURVEYOR

CORNER CODE

( OVER )

P-37

this corner was established at the location of a 60 penny spike found at the occupied east one-quarter corner, this location fits very well with the east line of section 9 as measured between previously established corners to the North and South.