

GRANT COUNTY CERTIFIED LAND CORNER

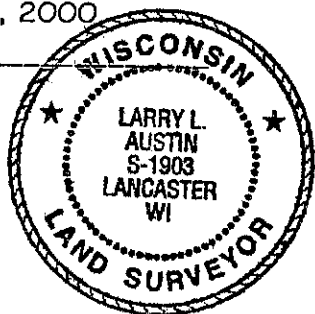
CORNER NUMBER 36

CERTIFICATE:

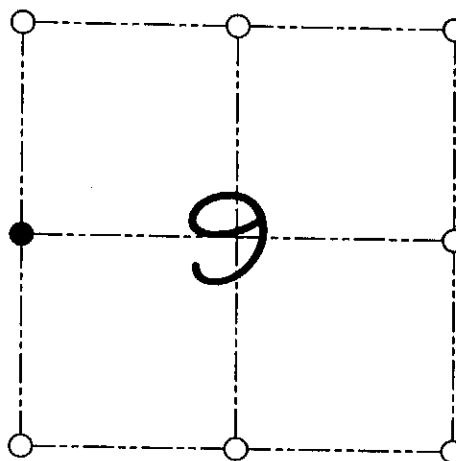
I, Larry L. Austin, do hereby certify that on the 2nd day of December, 2000, I found evidence of the West 1/4 corner of Section 9, Town 8 North, Range 1 West, of the 4th Principal Meridian, and I re-established said corner according to the Wisconsin statutes as shown and described hereon.

Dated this 23rd day of June, 2000

Larry L. Austin
Larry L. Austin S-1903



SEAL



● = CORNER LOCATION
WEST 1/4 CORNER OF SECTION 9, T 8 N R 1 W TOWN OF MUSCODA

HISTORY OF ORIGINAL CORNER ESTABLISHMENT:

Corner was originally set in 1833 by Harvey Parke.
In 1989 Matthew Janiak set a Number 6 iron bar at this location.

DESCRIPTION OF CORNER EVIDENCE FOUND:

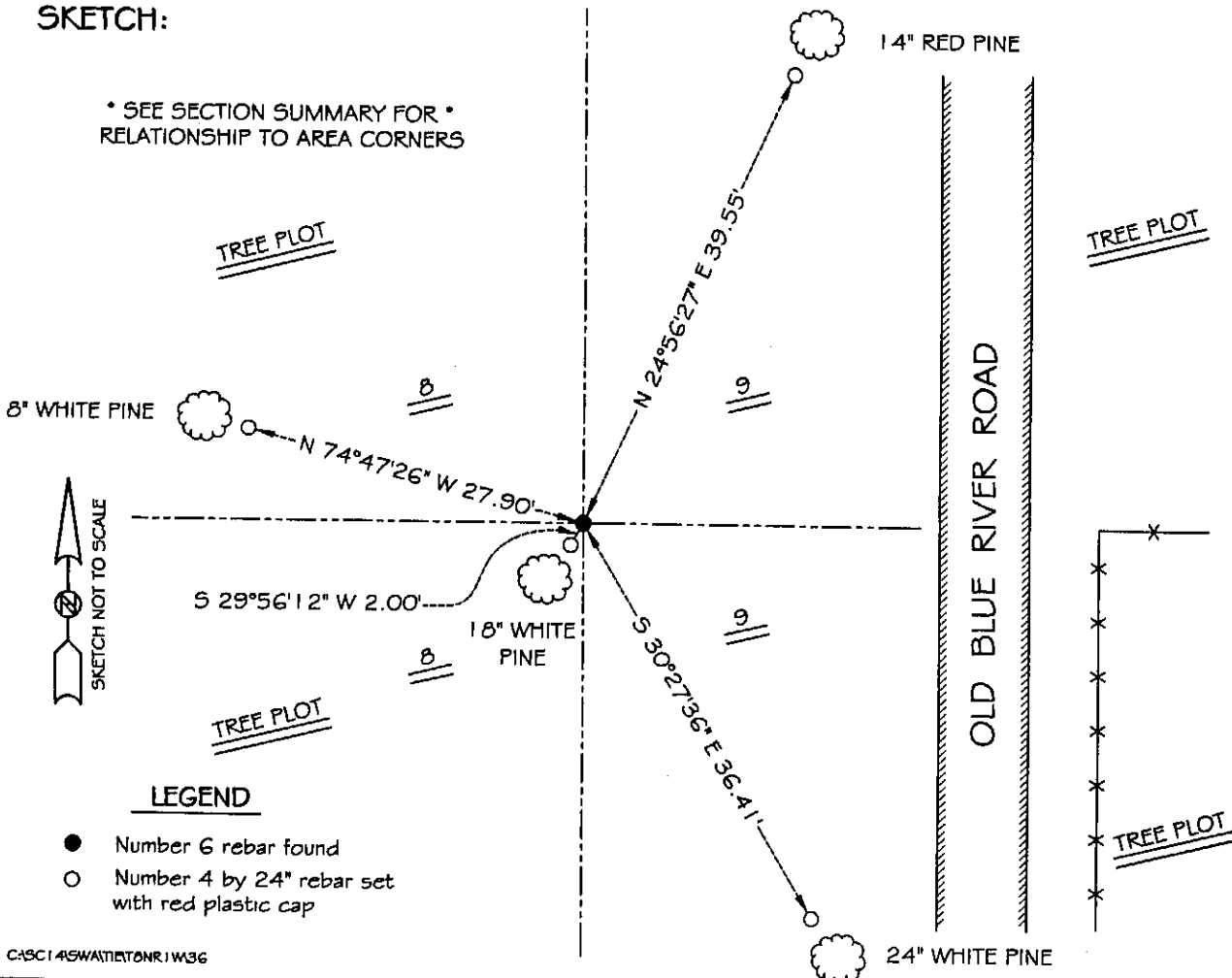
I found the Number 6 iron bar and accepted it's location after an E.D.M. & G.P.S. traverse of the area.

DESCRIPTION OF CORNER AND WITNESS MONUMENTS, references and accessories used to perpetuate the original or re-established location of this corner

WITNESS TO THE CORNER LOCATION: SHANE AUSTIN & SHELBY BLINDERT & BOBBY SEDGWICK

SKETCH:

* SEE SECTION SUMMARY FOR *
RELATIONSHIP TO AREA CORNERS



LEGEND

- Number 6 rebar found
- Number 4 by 24" rebar set with red plastic cap

608-935-3200

GRANT COUNTY GOVERNMENT CORNER RECORD

W 1/4 CORNER, SECTION 9 TOWNSHIP 8 NORTH, RANGE 1 WEST
TOWN, CITY OR VILLAGE OF MUSCODA

TYPE OF MONUMENT: 3/4" X 24" IRON ROD ELEVATION-M.S.L. DATUM _____

STATE PLANE COORDINATES: N _____

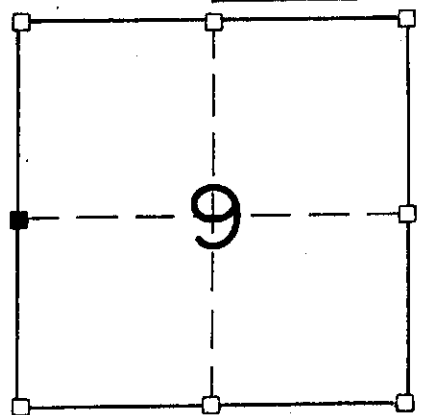
WISCONSIN SOUTH ZONE E _____

WITNESSES TO CORNER LOCATION

SEAN M. WALSH

PATRICK J. DEDERICH

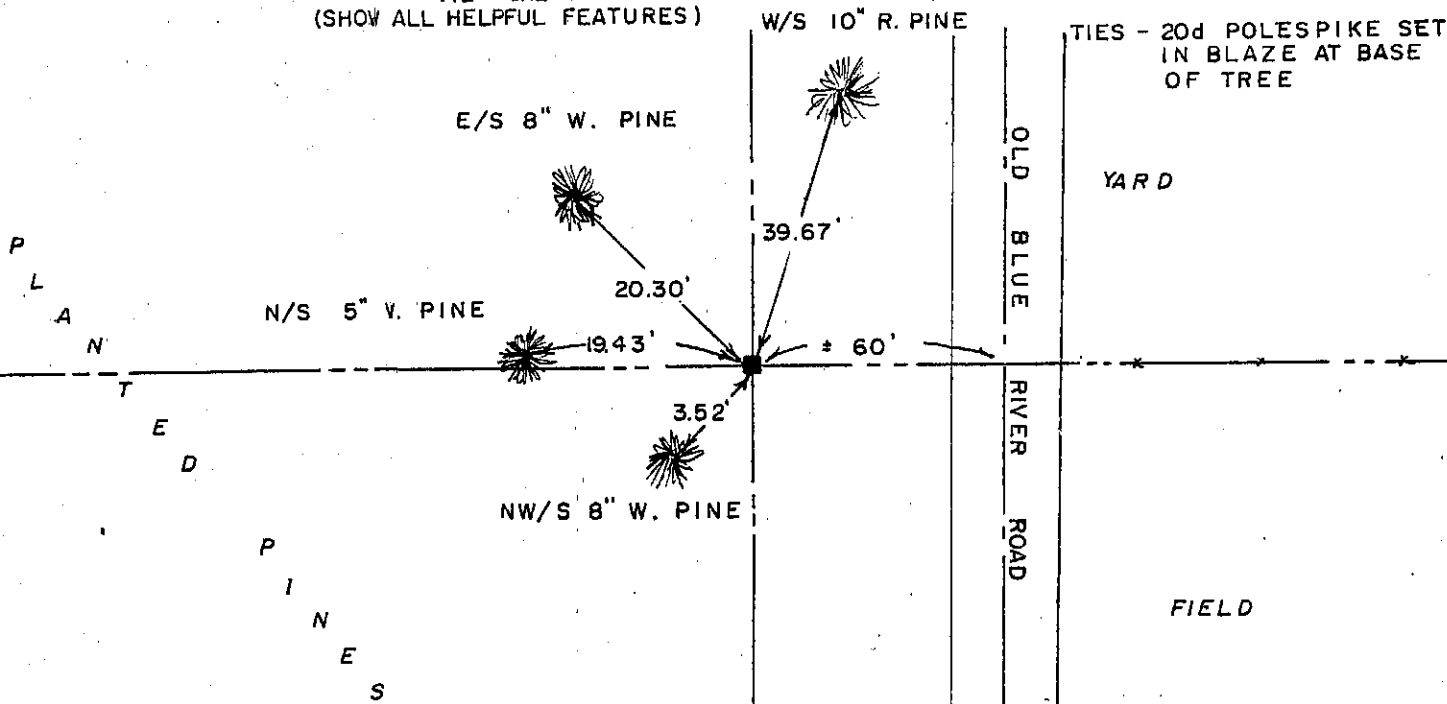
SECTION 9 T 8 N, R 1 W
TOWN OF MUSCODA



NORTH

■ - CORNER LOCATION

TIE SKETCH
(SHOW ALL HELPFUL FEATURES)



SURVEYOR'S CERTIFICATE
STATE OF WISCONSIN)
COUNTY) SS

SEAL S-1454

I, Matthew J. Janiak DO HEREBY CERTIFY THAT the above corner
has been established under my direction according to the
information shown hereon and that this information is
correct to the best of my information knowledge and
belief. (over)



DATED THIS 22ND DAY OF SEPT, 19 89

Matthew J. Janiak
REGISTERED LAND SURVEYOR

CORNER CODE

(OVER)

p. 36