

Muscoda T.

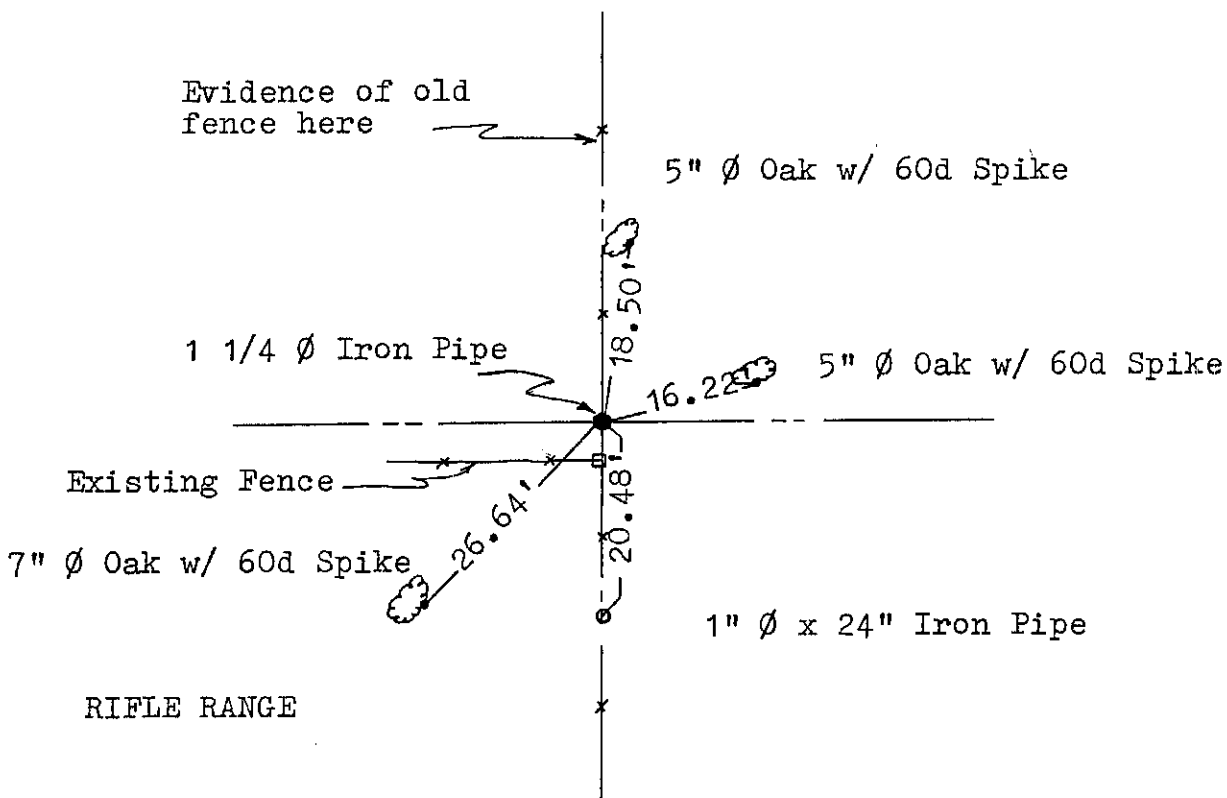
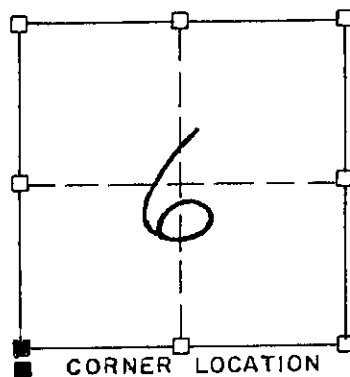
Stock No. 26273

SHEET 6 OF 13

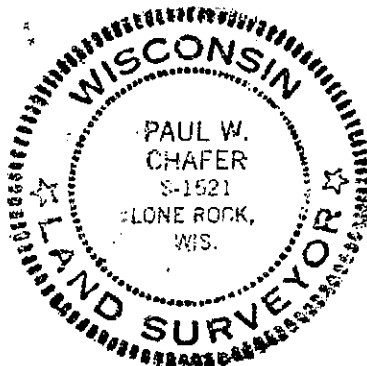
RECORD OF CORNER MONUMENTATION

SW CORNER, SECTION 6 TOWNSHIP 8 N., RANGE 1 West Grant COUNTY, WISCONSIN

N



A search of the records reveals this corner to have been established in 1833, no evidence of the original corner exists, however, a 1 1/4" Ø Iron Pipe was located at the above position. An EDM/T2 traverse of the South Line of Section 6 compared very well with the government notes and a witness verified this pipe as the corner. I accepted and hereby certify the above location and the ties as shown for perpetuating said corner.



RECEIVED

AUG 29 1986

pa 33

Paul W. Chafer
PAUL W. CHAFER S-1521
REGISTERED LAND SURVEYOR