

GRANT COUNTY CERTIFIED LAND CORNER

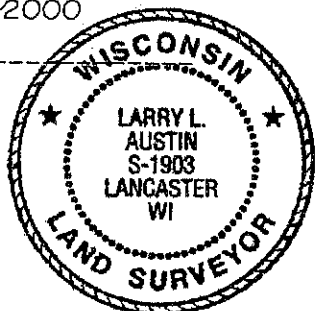
CORNER NUMBER 31

CERTIFICATE:

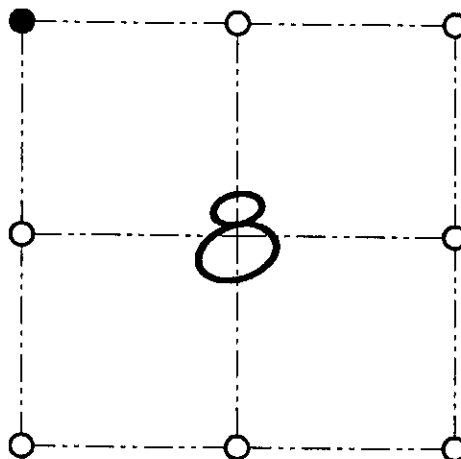
I, Larry L. Austin, do hereby certify that on the 8th day of February, 2000, I found evidence of the Northwest corner of Section 8, Town 8 North, Range 1 West, of the 4th Principal Meridian, and I re-established said corner according to the Wisconsin statutes as shown and described hereon.

Dated this 23rd day of June, 2000

Larry L. Austin
Larry L. Austin S-1903



SEAL



● = CORNER LOCATION
NORTHWEST CORNER OF SECTION 8, T 8 N R 1 W TOWN OF MUSCODA

HISTORY OF ORIGINAL CORNER ESTABLISHMENT:

Corner was originally set in 1833 by Harvey Parke.
In 1986 Paul Chafer set a 2" iron pipe at this location.

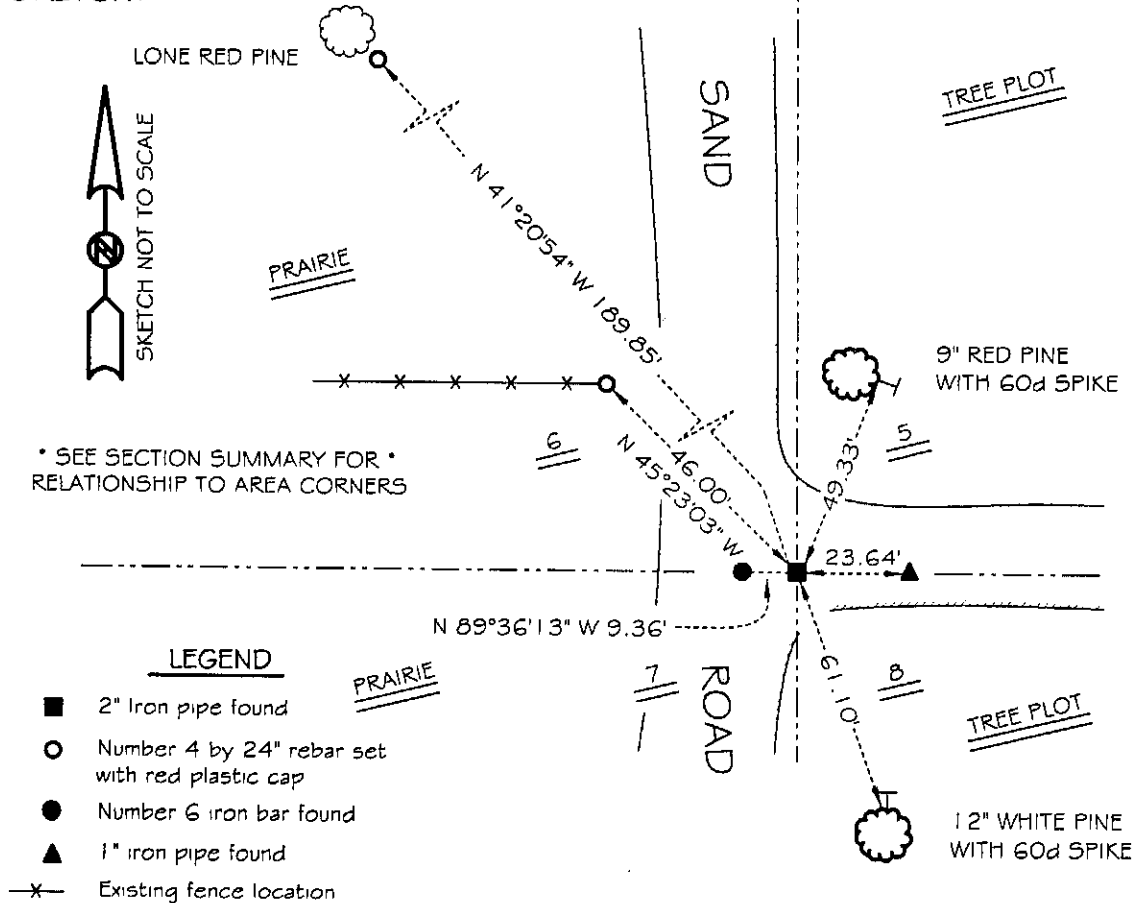
DESCRIPTION OF CORNER EVIDENCE FOUND:

I found the existing 2" iron pipe and accepted it's location after an E.D.M. & G.P.S. traverse of the area.

DESCRIPTION OF CORNER AND WITNESS MONUMENTS, references and accessories used to perpetuate the original or re-established location of this corner

WITNESS TO THE CORNER LOCATION: SHANE AUSTIN & SHELBY BLINDERT & BOBBY SEDGWICK

SKETCH:

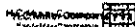


* SEE SECTION SUMMARY FOR *
RELATIONSHIP TO AREA CORNERS

LEGEND

- 2" Iron pipe found
- Number 4 by 24" rebar set with red plastic cap
- Number 6 iron bar found
- ▲ 1" iron pipe found
- x- Existing fence location

Muscoda T.

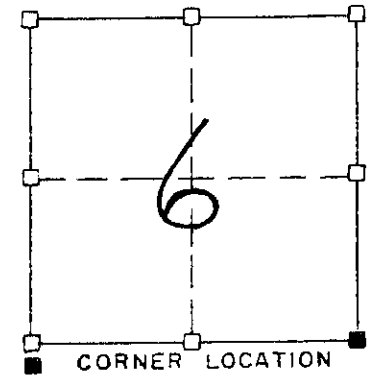
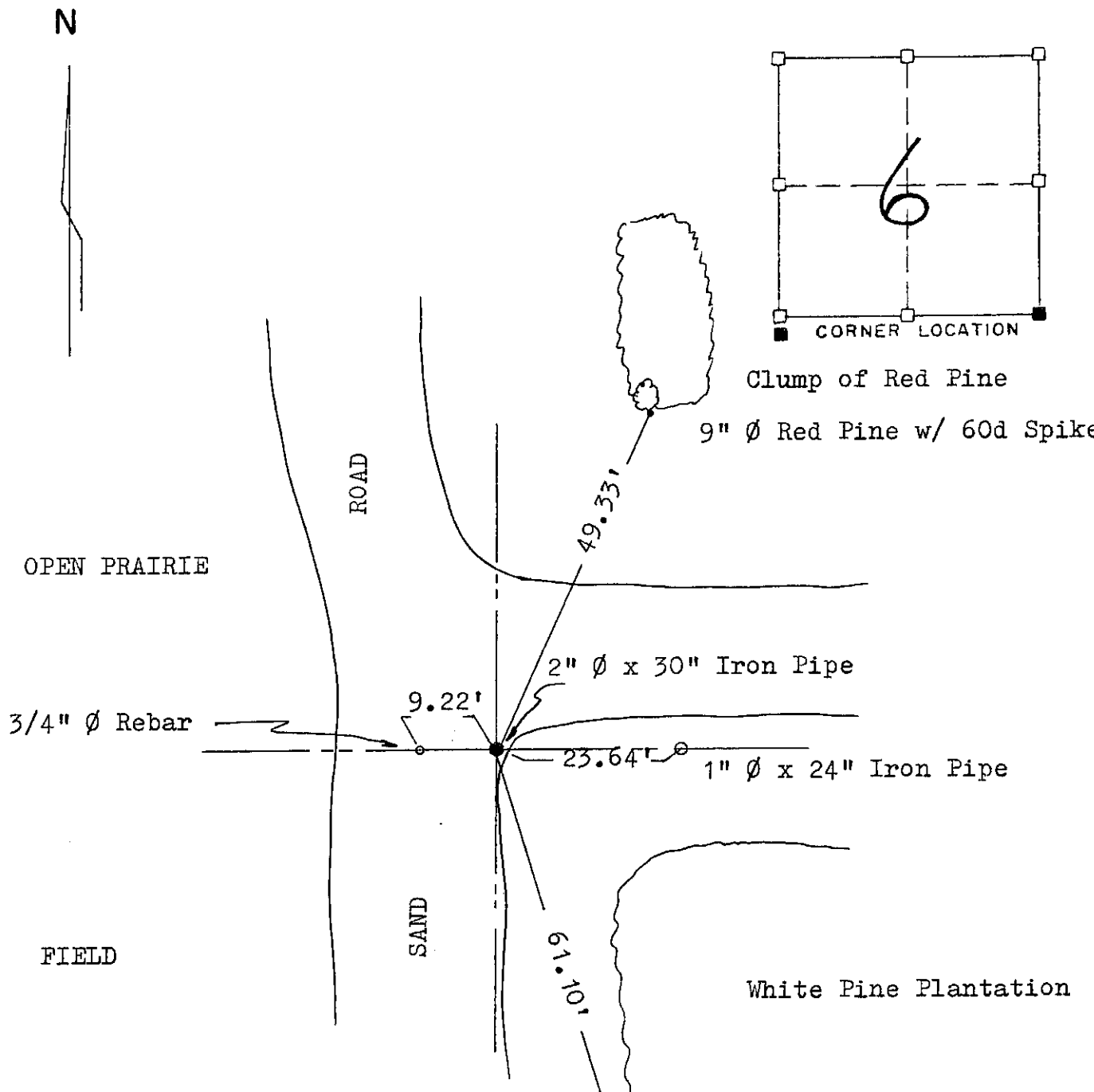


Stock No. 216279

SHEET 8 OF 13

RECORD OF CORNER MONUMENTATION

SE CORNER, SECTION 6 TOWNSHIP 8 N., RANGE 1 West
Grant COUNTY, WISCONSIN



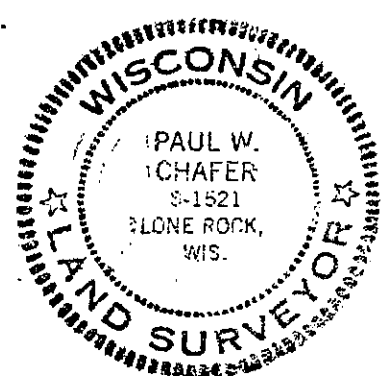
Clump of Red Pine
9" \emptyset Red Pine w/ 60d Spike

White Pine Plantation

12" \emptyset White Pine w/ 60d Spike

This corner was originally established in 1833, no evidence of the corner exists. Several markers were found in the area, some which the records show as being used for this corner, however, no retracement of said corner was performed. An EDM/T2 traverse of the South Line of Sections 6 and 7 helped to determine the proper placement of the corner. I hereby certify that this corner and the ties are correct to the best of my knowledge and belief.

RECORDED



Paul W. Chafer
PAUL W. CHAFER S-1521
REGISTERED LAND SURVEYOR

AUG 29 1986

p. 31