



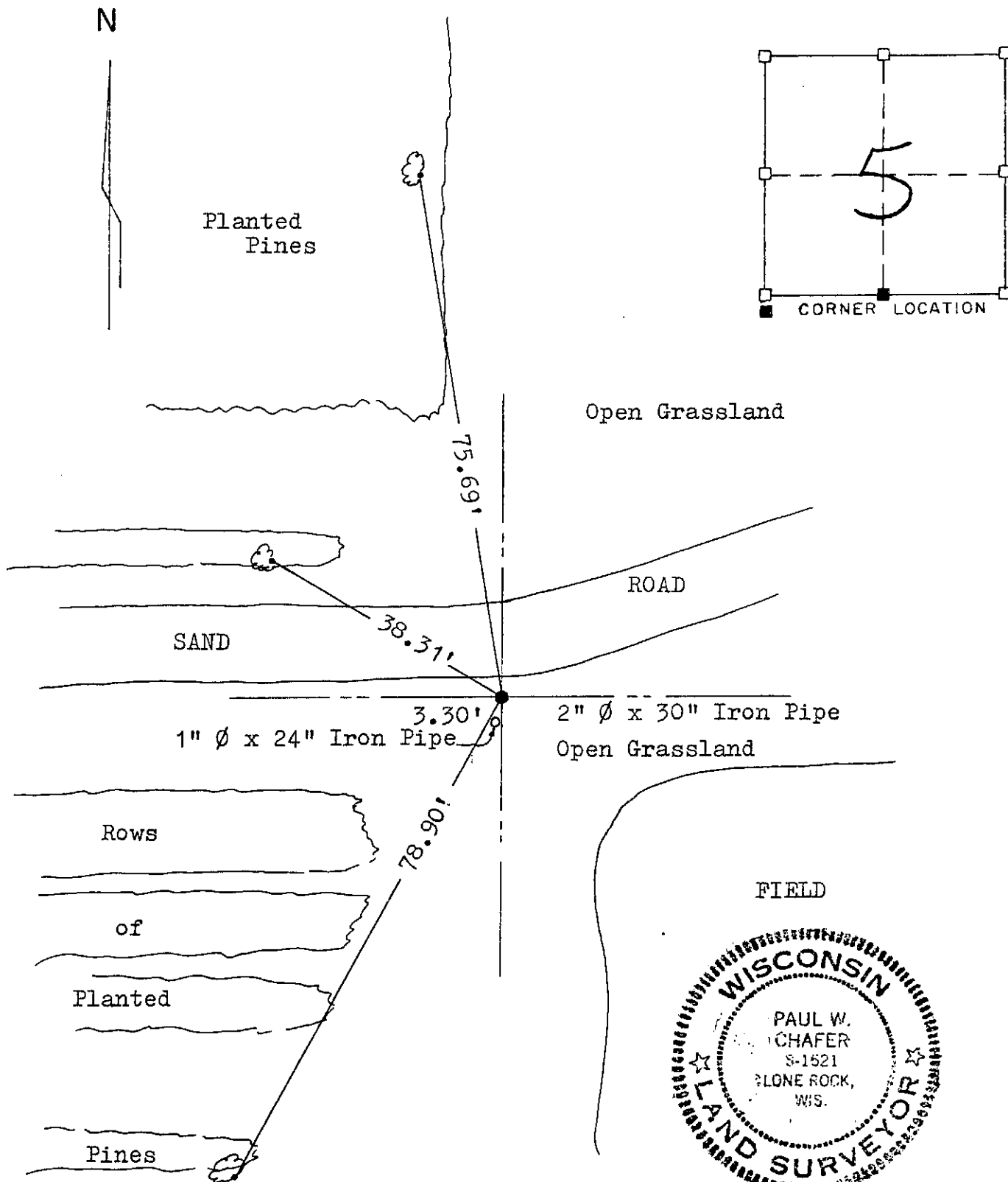
Book No. 26273

Muscoda T.

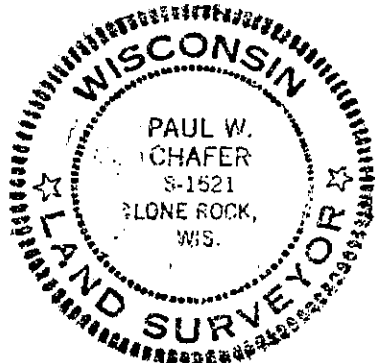
SHEET 9 OF 13

RECORD OF CORNER MONUMENTATION

S1/4 CORNER, SECTION 5 TOWNSHIP 8 N, RANGE 1 West Grant COUNTY, WISCONSIN



The original government notes show this corner being established in 1833, no evidence of the corner exists. An EDM/T2 traverse of the South Line of Section 5, compared well with the records. Therefore, I have monumented this corner as shown and taken the ties to perpetuate that location. I hereby certify the above to be correct to the best of my knowledge and belief.



Paul W. Chafer
 PAUL W. CHAFER S-1521
 REGISTERED LAND SURVEYOR

AUG 29 1986

p. 30