

GRANT COUNTY CERTIFIED LAND CORNER

CORNER NUMBER 29

CERTIFICATE:

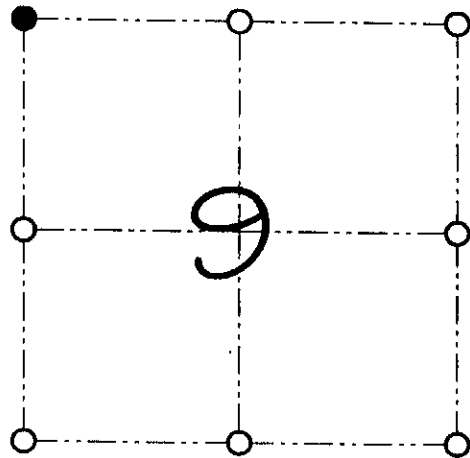
I, Larry L. Austin, do hereby certify that on the 2nd day of February, 2000, I found evidence of the Northwest corner of Section 9, Town 8 North, Range 1 West, of the 4th Principal Meridian, and I re-established said corner according to the Wisconsin statutes as shown and described hereon.

Dated this 23rd day of June, 2000

Larry L. Austin
Larry L. Austin S-1903



SEAL



● = CORNER LOCATION

NORTHWEST CORNER OF SECTION 9, T 8 N R 1 W TOWN OF MUSCODA

HISTORY OF ORIGINAL CORNER ESTABLISHMENT:

Corner was set in 1833 by Harvey Parke.
In 1986 Paul Chafer set a 2" iron pipe at this location.

DESCRIPTION OF CORNER EVIDENCE FOUND:

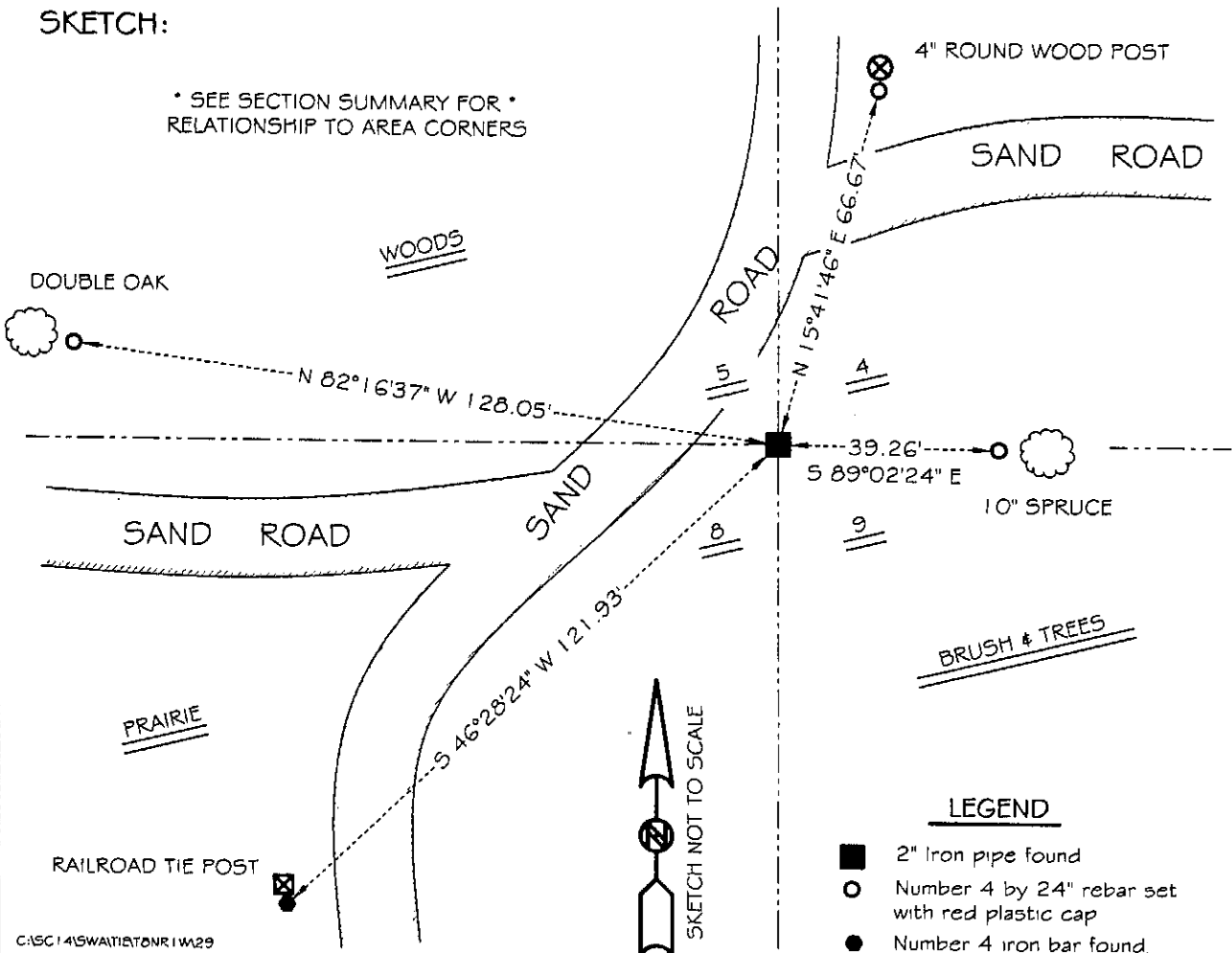
I found the 2" iron pipe and accepted it's location after an E.D.M. & G.P.S. traverse of the area.

DESCRIPTION OF CORNER AND WITNESS MONUMENTS, references and accessories used to perpetuate the original or re-established location of this corner

WITNESS TO THE CORNER LOCATION: SHANE AUSTIN & SHELBY BLINDERT & BOBBY SEDGWICK

SKETCH:

* SEE SECTION SUMMARY FOR *
RELATIONSHIP TO AREA CORNERS



LEGEND

- 2" Iron pipe found
- Number 4 by 24" rebar set with red plastic cap
- Number 4 iron bar found

Muscoda T

FORM NO. 985-A

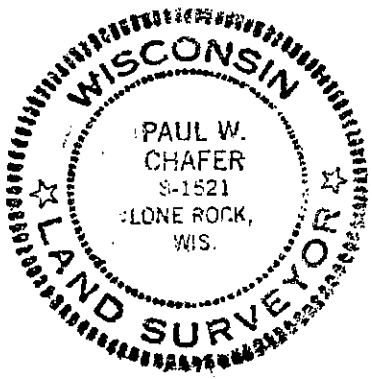
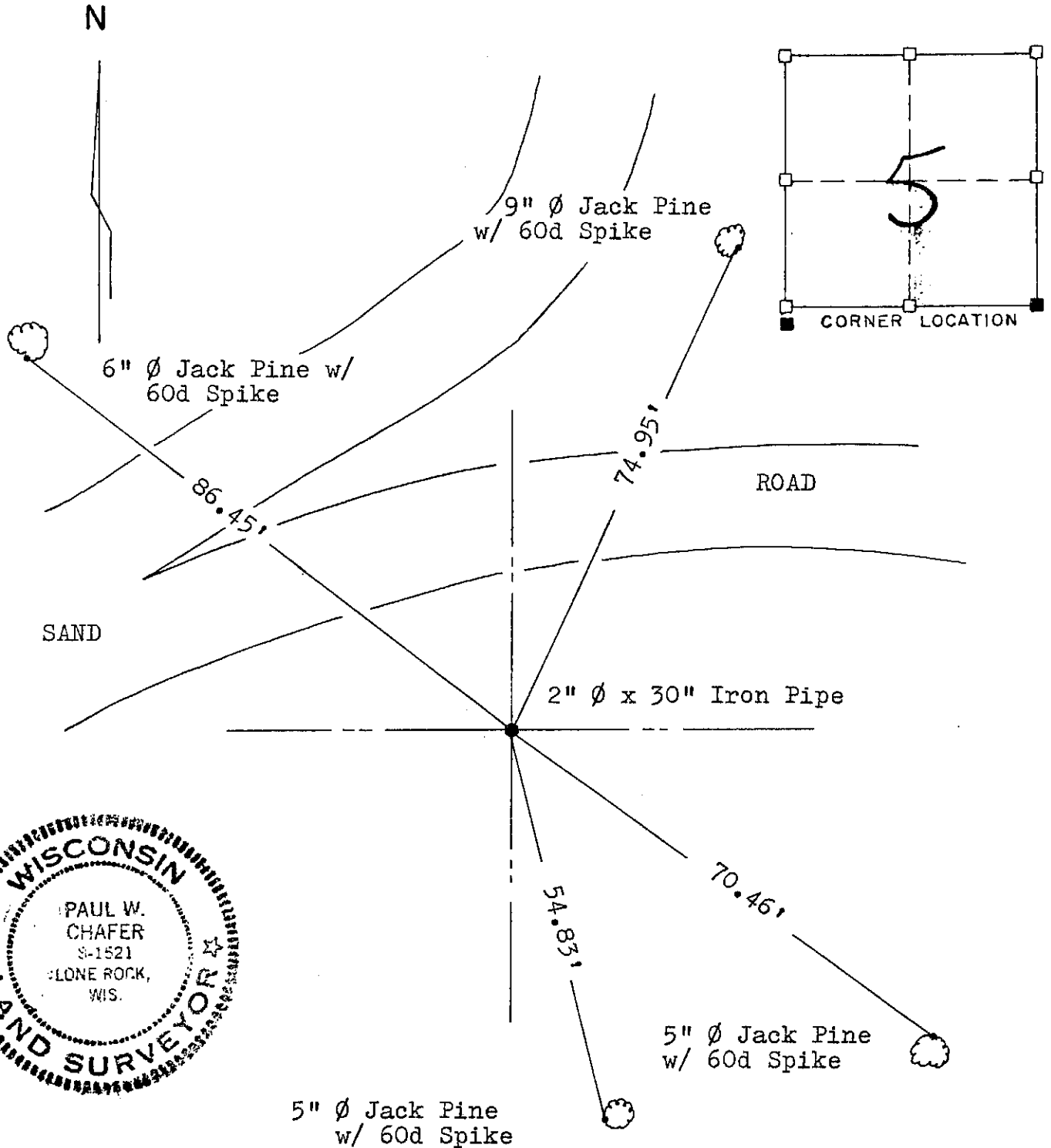
FORM NO. 985-A
H.C. Miller Company
H.C. Miller Company

Stock No. 26273
Stock No. 26273

SHEET 10 OF 13

RECORD OF CORNER MONUMENTATION

SE CORNER, SECTION 5 TOWNSHIP 8 N., RANGE 1 West
Grant COUNTY, WISCONSIN



The original corner was established in 1833, no evidence of this corner exists. An EDM/T2 traverse of the South Line of Sections 4 and 5 indicates this to be the correct location of said corner. I hereby certify that I have monumented the corner as indicated above and have taken the ties to perpetuate this location. The above is correct to the best of my knowledge and belief.

[Signature]

Paul W. Chafer
PAUL W. CHAFER S-1521
REGISTERED LAND SURVEYOR

[AUG 29 1986]

1029