

GRANT COUNTY CERTIFIED LAND CORNER

CORNER NUMBER 28

CERTIFICATE:

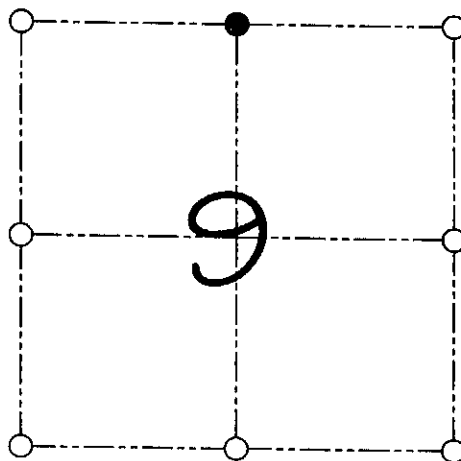
I, Larry L. Austin, do hereby certify that on the 2nd day of February, 2000, I found evidence of the North 1/4 corner of Section 9, Town 8 North, Range 1 West, of the 4th Principal Meridian, and I re-established said corner according to the Wisconsin statutes as shown and described hereon.

Dated this 23rd day of June, 2000

Larry L. Austin
Larry L. Austin S-1903



SEAL



● = CORNER LOCATION

NORTH 1/4 CORNER OF
SECTION 9, T 8 N R 1 W
TOWN OF MUSCODA

HISTORY OF ORIGINAL CORNER ESTABLISHMENT:

Corner was originally set in 1833 by Harvey Parke.
In 1986 Paul Chafer set a 2" iron pipe at this location.

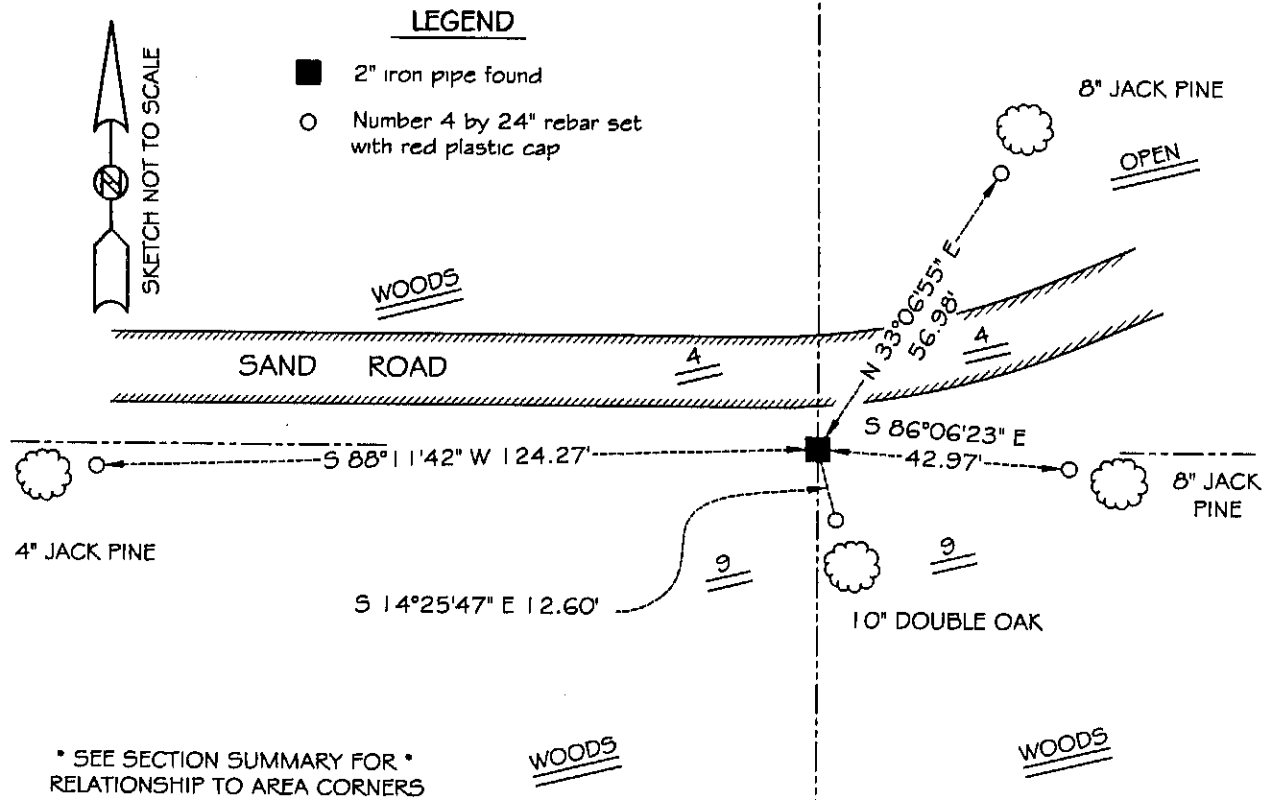
DESCRIPTION OF CORNER EVIDENCE FOUND:

I found the 2" iron pipe and accepted it's location after an
E.D.M. & G.P.S. traverse of the area. The ties were lost do to tree harvesting.

DESCRIPTION OF CORNER AND WITNESS MONUMENTS, references and accessories used to perpetuate the original or re-established location of this corner

WITNESS TO THE CORNER LOCATION: SHANE AUSTIN & SHELBY BLINDERT & BOBBY SEDGWICK

SKETCH:



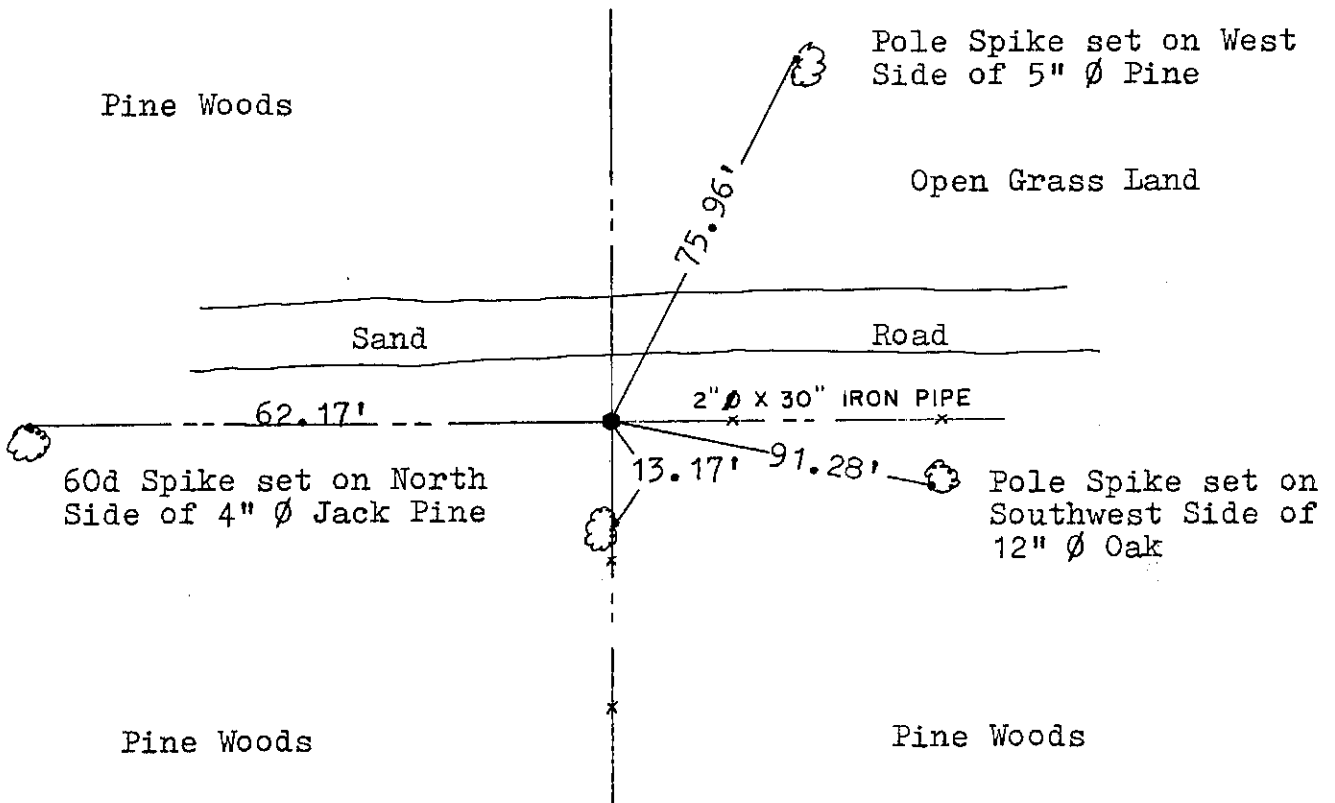
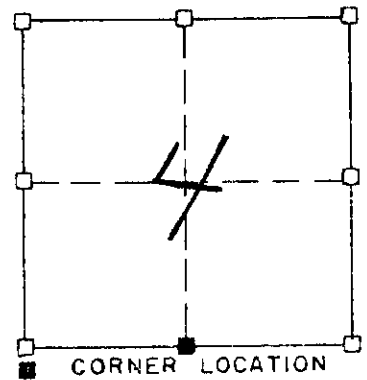
Stack No. 26273
Stock No. 26273

SHEET 11 OF 13

RECORD OF CORNER MONUMENTATION

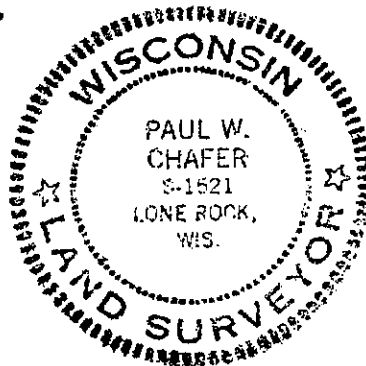
S1/4 CORNER, SECTION 4 TOWNSHIP 8 N., RANGE 1 West
Grant COUNTY, WISCONSIN

N



This corner was originally established in 1833, no evidence exists. A reinforcing bar was located at the corner and the corner was referenced in 1983. However, one of the witness trees has been destroyed. I replaced said corner with a 2" \emptyset x 30" Iron Pipe and established a new tie. I hereby certify that the above location and monumentation is correct to the best of my knowledge and belief.

Paul W. Chafer
PAUL W. CHAFER S-1821
REGISTERED LAND SURVEYOR



RECORDED

AUG 29 1986

p. 28