

GRANT COUNTY CERTIFIED LAND CORNER

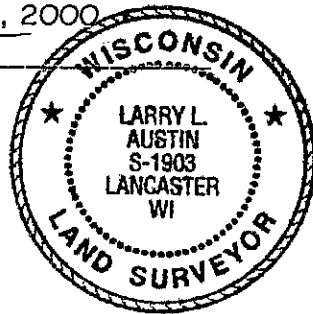
CORNER NUMBER 27

CERTIFICATE:

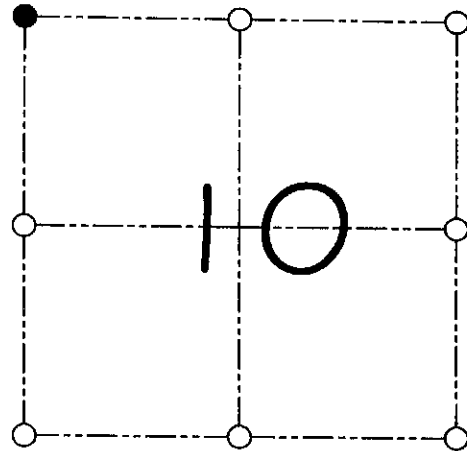
I, Larry L. Austin, do hereby certify that on the 2nd day of December, 1999, I found evidence of the Northwest corner of Section 10, Town 8 North, Range 1 West, of the 4th Principal Meridian, and I re-established said corner according to the Wisconsin statutes as shown and described hereon.

Dated this 23rd day of June, 2000

Larry L. Austin
Larry L. Austin S-1903



SEAL



● = CORNER LOCATION

NORTHWEST CORNER OF
SECTION 10, T 8 N R 1 W
TOWN OF MUSCODA

HISTORY OF ORIGINAL CORNER ESTABLISHMENT:

Corner was originally set in 1833 by Harvey Parke.
In 1986 Paul Chafer set a 2" iron pipe.

DESCRIPTION OF CORNER EVIDENCE FOUND:

I found and accepted the 2" iron pipe & set new ties.
Verified this location using E.D.M. & G.P.S. methods.

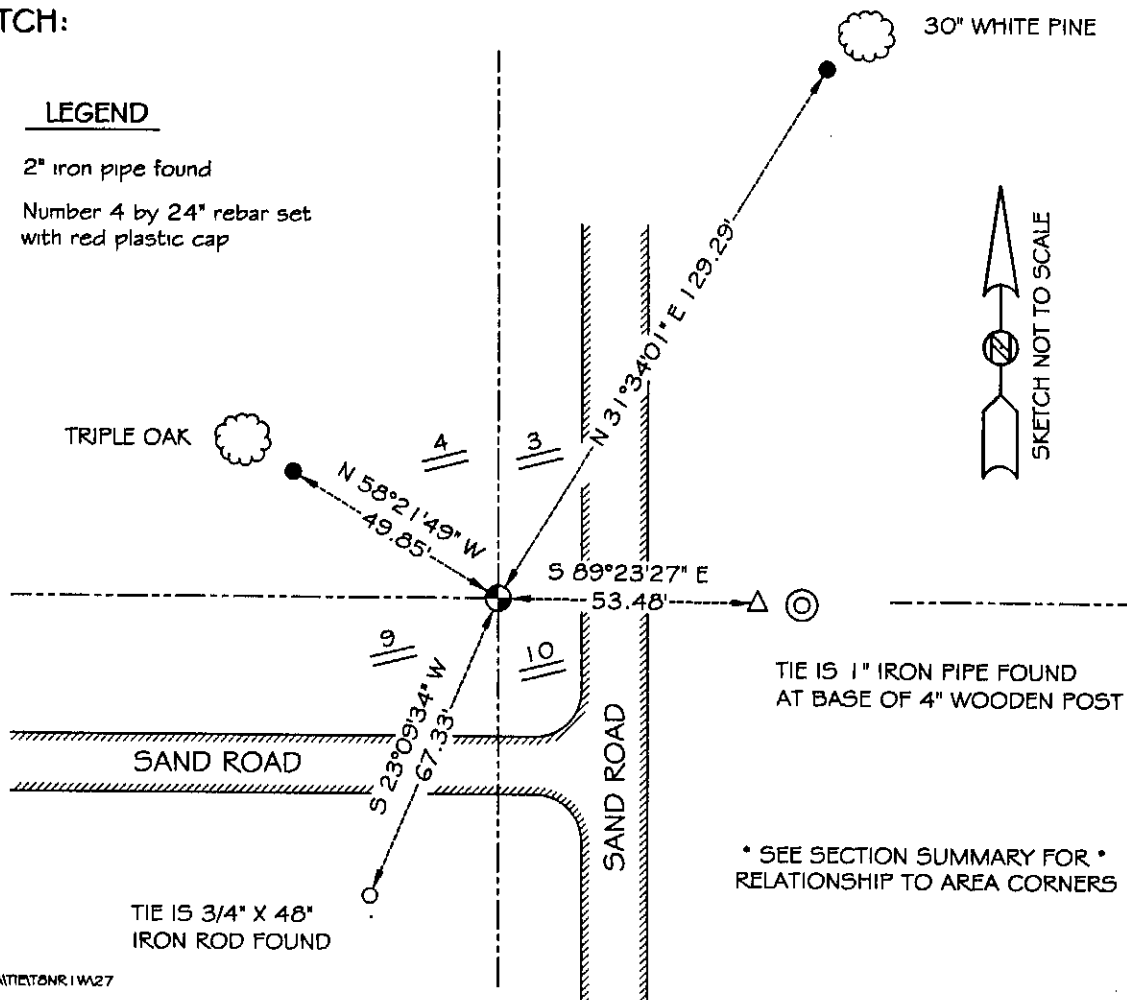
DESCRIPTION OF CORNER AND WITNESS MONUMENTS, references and accessories used to perpetuate the original or re-established location of this corner

WITNESS TO THE CORNER LOCATION: SHANE AUSTIN & SHELBY BLINDERT & BOBBY SEDGWICK

SKETCH:

LEGEND

- 2" iron pipe found
- Number 4 by 24" rebar set with red plastic cap



GRANT COUNTY

GOVERNMENT CORNER RECORD

NE CORNER, SECTION 9, TOWNSHIP 8 NORTH, RANGE 1 WEST.
 TOWN, CITY OR VILLAGE OF MUSCODA

TYPE OF MONUMENT: 2" DIA. IRON PIPE ELEVATION - M.S.L. DATUM _____

STATE PLANE COORDINATES: N _____

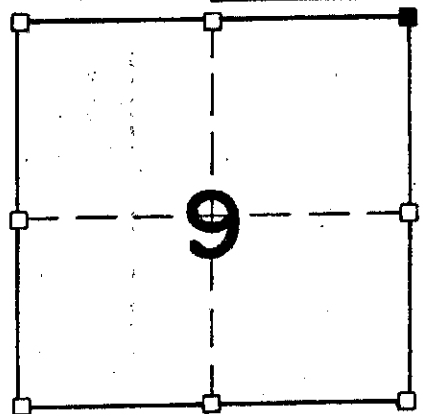
WISCONSIN SOUTH ZONE E _____

WITNESSES TO CORNER LOCATION

SEAN M. WALSH

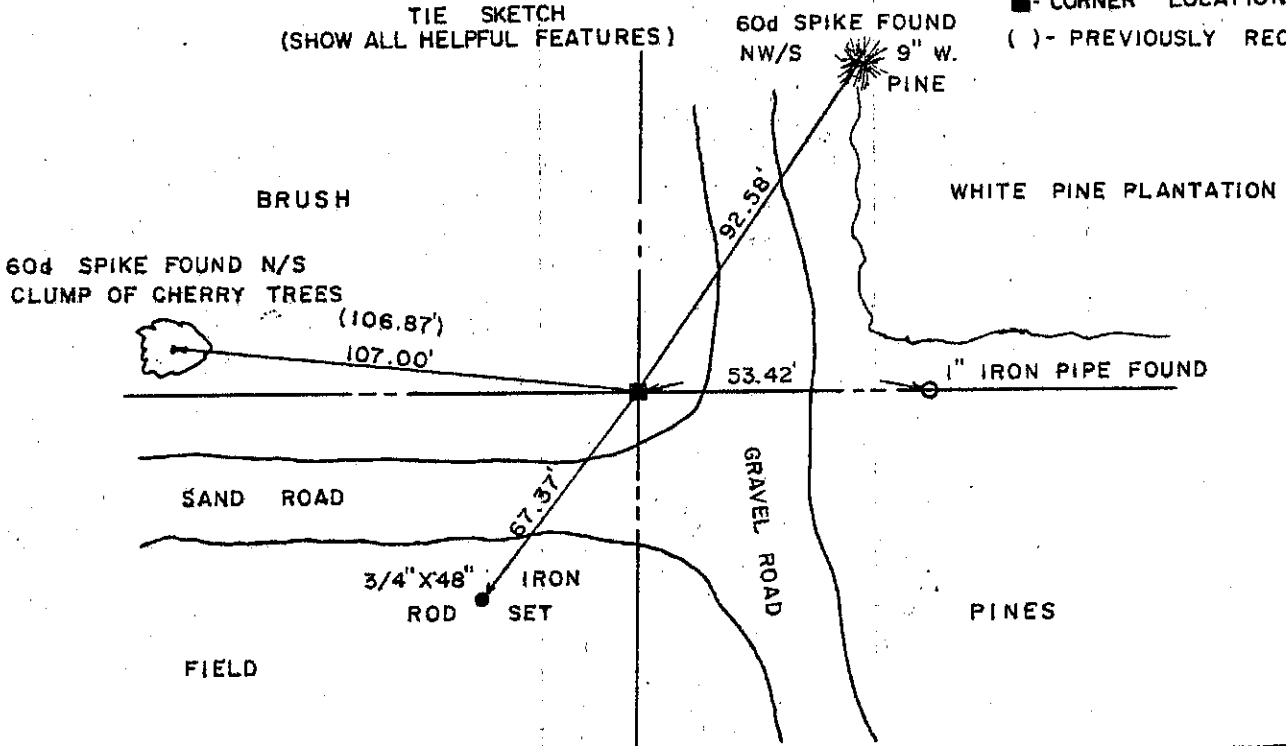
PATRICK J. DEDERICH

SECTION 9, T 8 N, R 1 W
 TOWN OF MUSCODA



■ - CORNER LOCATION
 () - PREVIOUSLY RECORDED AS

TIE SKETCH
 (SHOW ALL HELPFUL FEATURES)



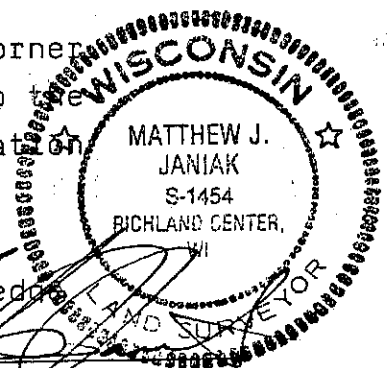
SURVEYOR'S CERTIFICATE
 STATE OF WISCONSIN)
 COUNTY) SS

SEAL S-1454

I, Matthew J. Janiak, DO HEREBY CERTIFY THAT the above corner
has been perpetuated under my direction according to the
information shown hereon at the above described location
currently marked by a 2 inch diameter iron pipe
referenced as shown hereon and that the information
contained hereon is correct to the best of my knowledge,
information and belief.

DATED THIS 22nd DAY OF Sept, 19 89

REGISTERED LAND SURVEYOR



CORNER CODE

(OVER)

227

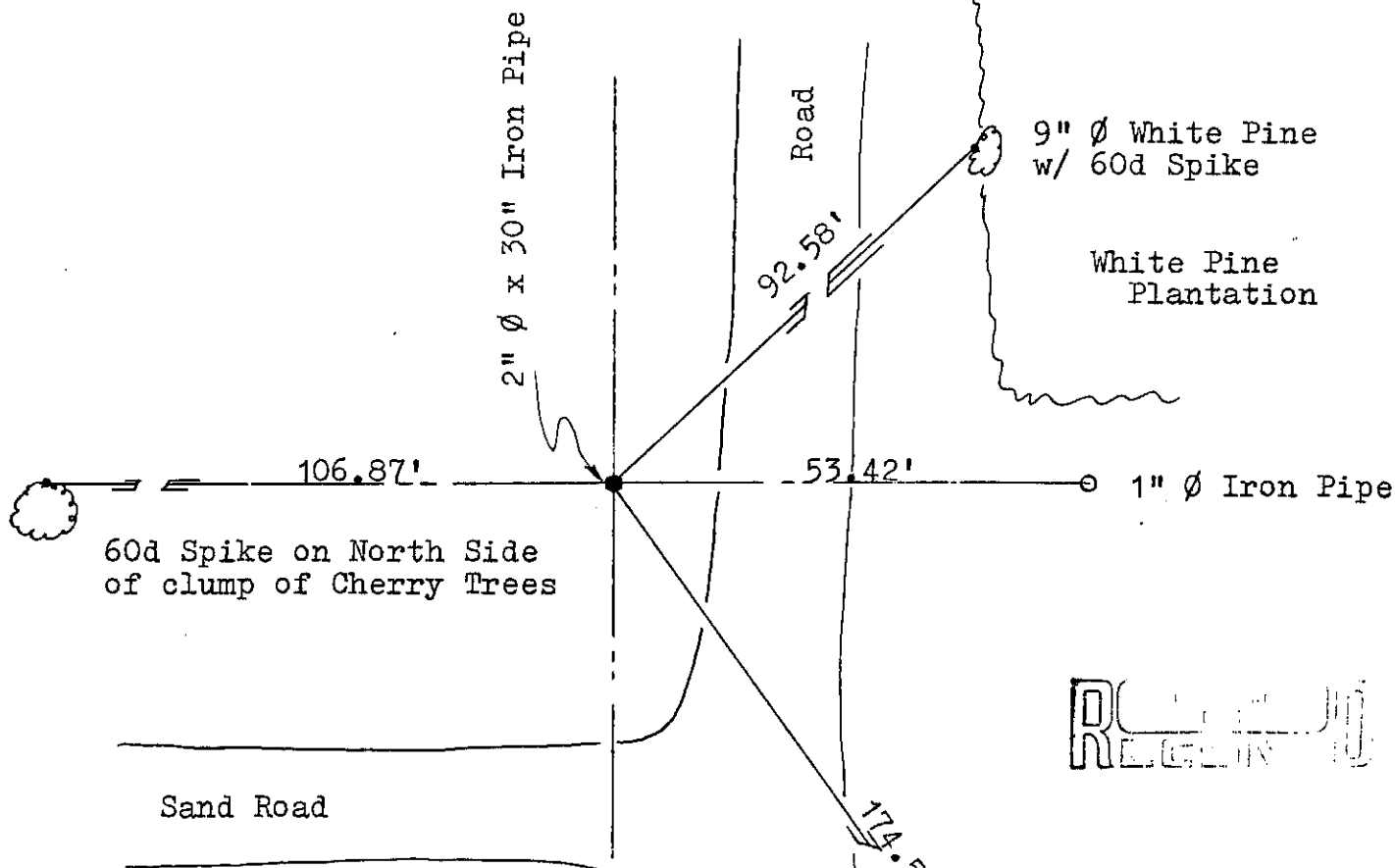
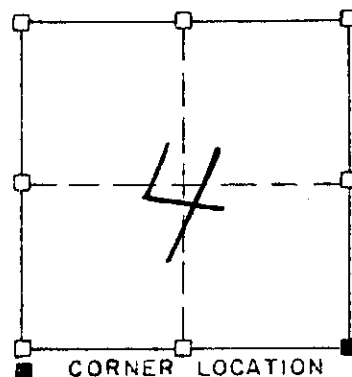
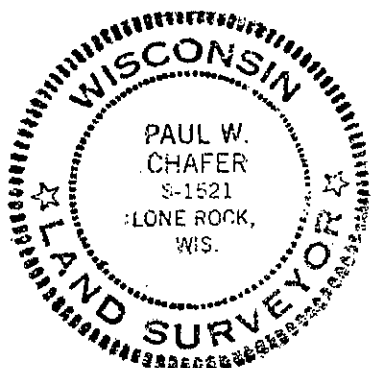
Muscoda T.

SHEET 12 OF 13

RECORD OF CORNER MONUMENTATION

SE CORNER, SECTION 4 TOWNSHIP 8 N., RANGE 1 West
 Grant COUNTY, WISCONSIN

N



REGISTERED

AUG 29 1926

This corner was established in 1833, no evidence exists of said corner. An EDM/T2 traverse of the South Line of Sections 3, 4 and 5 show the total distance to fit the original notes very well, however, Section 3 as determined by existing survey records is about 52 feet short and the East one half of Section 4 long by an equal distance. No evidence was available which would indicate any retracement, nor were the data for Sections 4 and 5 ever correlated. A distance North to the high bank checked with the government notes. I accepted a position which best coincides with the government notes and hereby certify said location and ties to be correct to the best of my knowledge and belief.

Paul W. Chaffer
 PAUL W. CHAFER S-1521
 REGISTERED LAND SURVEYOR