

GRANT COUNTY CERTIFIED LAND CORNER

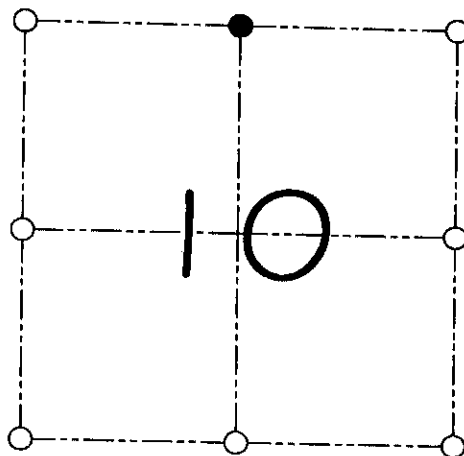
CORNER NUMBER 26

CERTIFICATE:

I, Larry L. Austin, do hereby certify that on the 8th day of December, 1999, I found evidence of the North 1/4 corner of Section 10, Town 8 North, Range 1 West, of the 4th Principal Meridian, and I re-established said corner according to the Wisconsin statutes as shown and described hereon.

Dated this 23rd day of June, 2000

Larry L. Austin
Larry L. Austin S-1903



● = CORNER LOCATION

NORTH 1/4 CORNER OF SECTION 10, T 8 N R 1 W TOWN OF MUSCODA

HISTORY OF ORIGINAL CORNER ESTABLISHMENT:

Corner was originally set in 1833 by Harvey Parke.
In 1986 Paul Chafer set a 2" iron pipe at this location.

DESCRIPTION OF CORNER EVIDENCE FOUND:

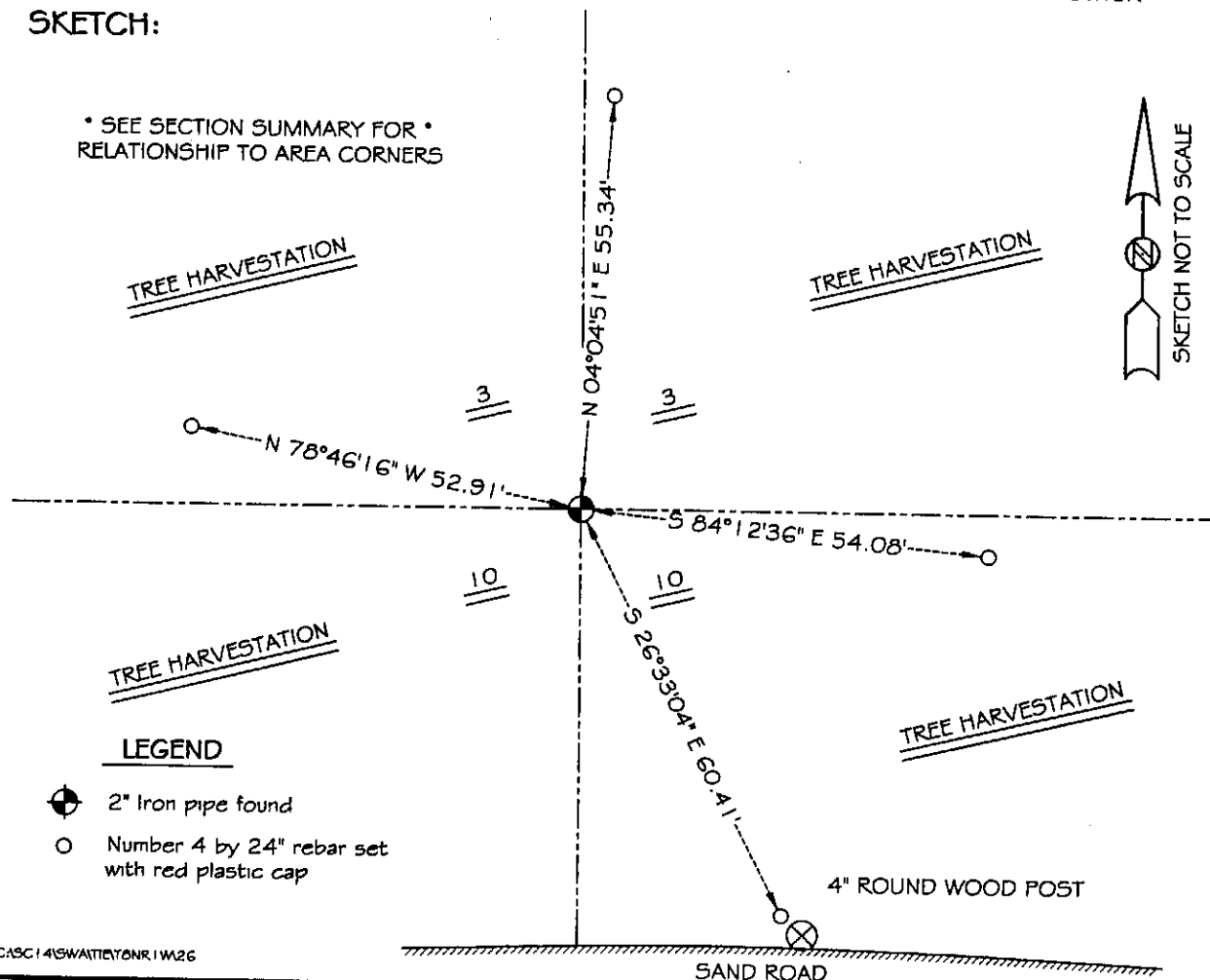
I found and accepted the 2" iron pipe. I reset the ties due to tree harvesting.
Verified this location using E.D.M. & G.P.S. methods.

DESCRIPTION OF CORNER AND WITNESS MONUMENTS, references and accessories used to perpetuate the original or re-established location of this corner

WITNESS TO THE CORNER LOCATION: SHANE AUSTIN & SHELBY BLINDERT & BOBBY SEDGWICK

SKETCH:

* SEE SECTION SUMMARY FOR *
RELATIONSHIP TO AREA CORNERS



LEGEND

- ⊕ 2" Iron pipe found
- Number 4 by 24" rebar set with red plastic cap

Muscoda T.

FORM NO. 985-A

FORM NO. 985-A

H.C. Miller Company
H. CHAFFER COMPANY
SURVEYING INSTRUMENTS

Stock No. 26273
Stock No. 26273

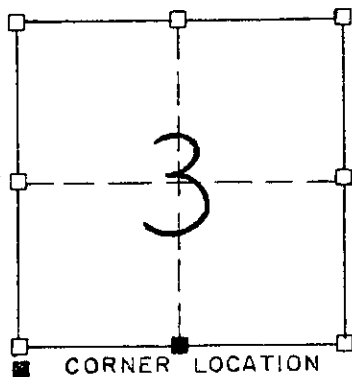
SHEET 13 OF 13

RECORD OF CORNER MONUMENTATION

S1/4 CORNER, SECTION 3 TOWNSHIP 8 N., RANGE 1 West
Grant COUNTY, WISCONSIN

N

8" Ø White Pine
w/ 60d Spike



CORNER LOCATION

Fields

Fields

11" Ø White Pine
w/ 60d Spike

83.45'

42.71'

2" Ø x 30" Iron
Pipe

33.89'

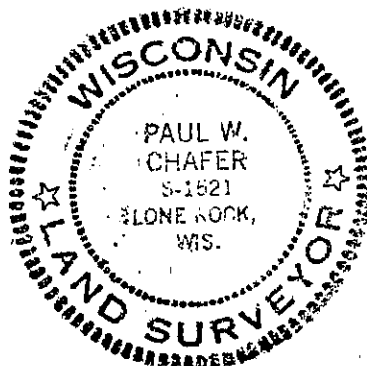
9" Ø Red Pine w/
60d Spike

61.13'

Fields

Fields

9" Ø Red Pine w/
60d Spike



RECORDED

AUG 29 1986

This corner was established in 1833, no evidence exists. The corner falls in a cultivated field and was established equidistant from the SW and SE corners of Section 3, as determined by an EDM/T2 traverse of said section. I hereby certify this location is correct to the best of my knowledge and belief and have taken the above shown ties to perpetuate said location.

Paul W. Chafer.
PAUL W. CHAFER S1521
REGISTERED LAND SURVEYOR

p. 26