

U.S. PUBLIC LAND SURVEY MONUMENT RECORD - GRANT COUNTY, WI

Section 11, Town 8 North Range 1 West, Town of Muscoda (a)

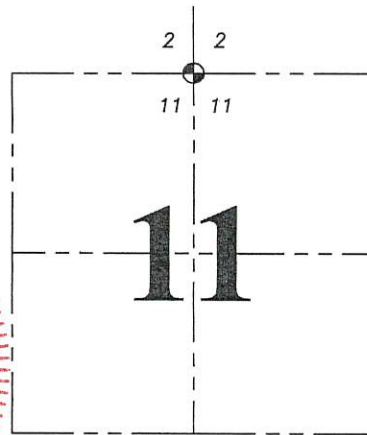
NOTE: This form is intended and designed to fulfill all requirements of the Wisconsin Administrative Code Chapter A-E 7.08, U.S. Public Land Survey Monument Record (3) (a) (b) (c) (d) (e) (f) (g) (h) (i).

CERTIFICATE: (i)

I, Aaron J. Austin, Wisconsin Professional Land Surveyor, do hereby certify that the corner location on this record was determined by me and/or under my direct supervision and that this U.S. Public Land Survey Monument Record is correct and complete to the best of my knowledge and belief.

Dated this 18th day of July, 2019.

Aaron J. Austin (signature)
Aaron J. Austin, S-2922



⊕ = CORNER LOCATION

Grant County Coordinates:
NAD 83 (2011)
Northing: 648,583.85
Easting: 885,943.80

HISTORY OF CORNER ESTABLISHMENT:

Original corner was set in 1833 by Sibley.
Robert Lampman set a 3/4" iron bar and prepared a Survey Monument Record.

DESCRIPTION OF CORNER EVIDENCE FOUND: (b) (f) (g) (h)

I found the monument and two witness corners set by Lampman. I set two additional witness corners after I verified the Monument's location with G.P.S. and E.D.M. methods.

DESCRIPTION OF CORNER AND WITNESS MONUMENTS, references and accessories used to perpetuate the original or re-established location of this corner. (c) (d) (e)

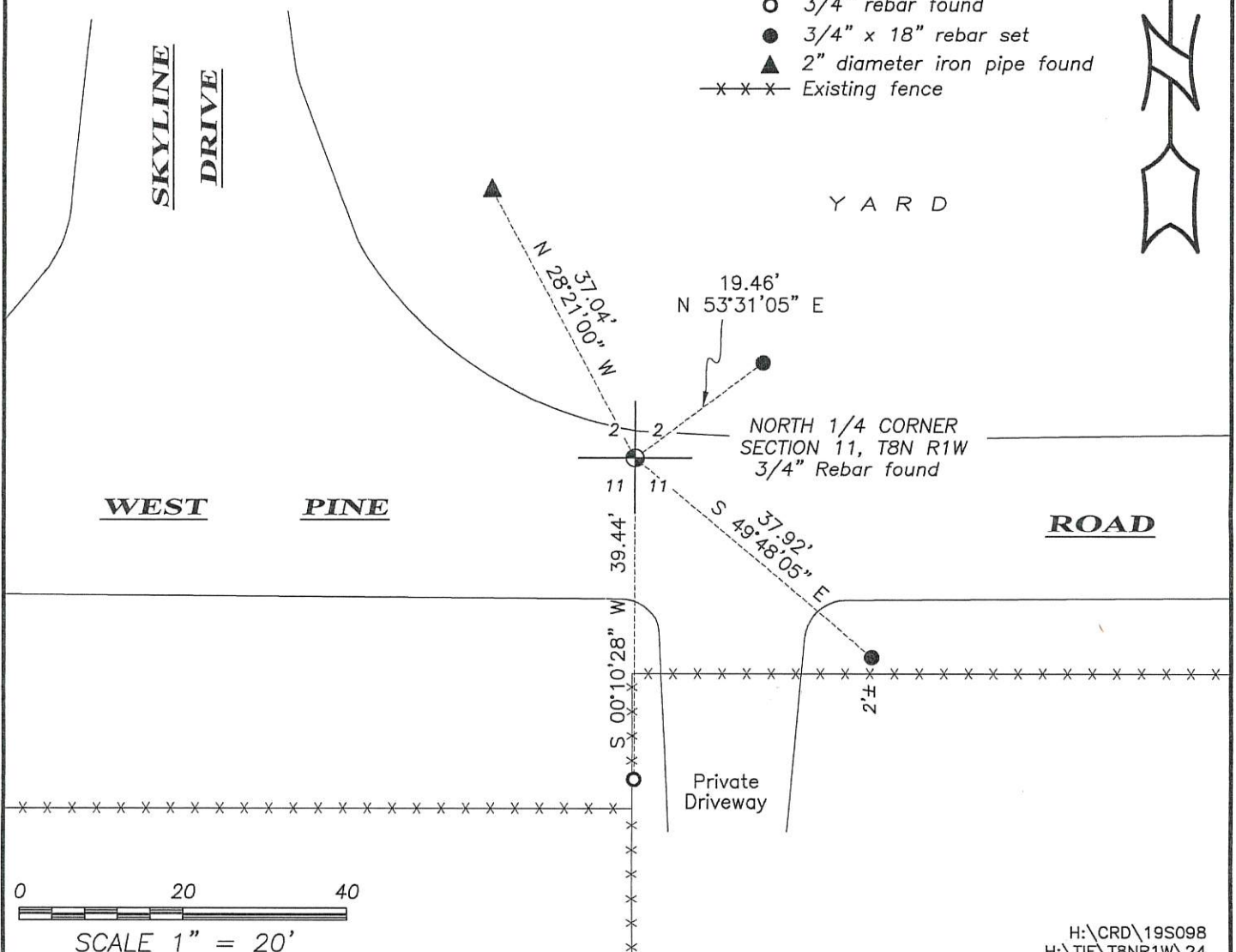
Witnesses to corner location Shane Austin, Owen Austin.

Drawn by: Owen Austin

SKETCH:

LEGEND

- ⊕ Section Corner—as designated
○ 3/4" rebar found
● 3/4" x 18" rebar set
▲ 2" diameter iron pipe found
-x-x-x Existing fence



0 20 40
SCALE 1" = 20'

CERTIFIED LAND CORNER

GRANT COUNTY
RECEIVED
JUL 26 1989

STATE OF WISCONSIN)
COUNTY OF GRANT) S.S.

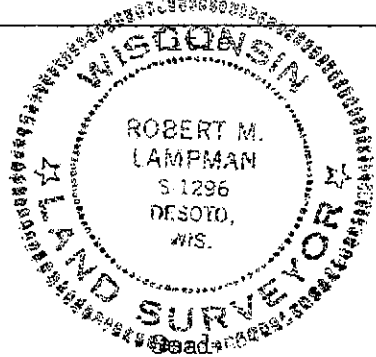
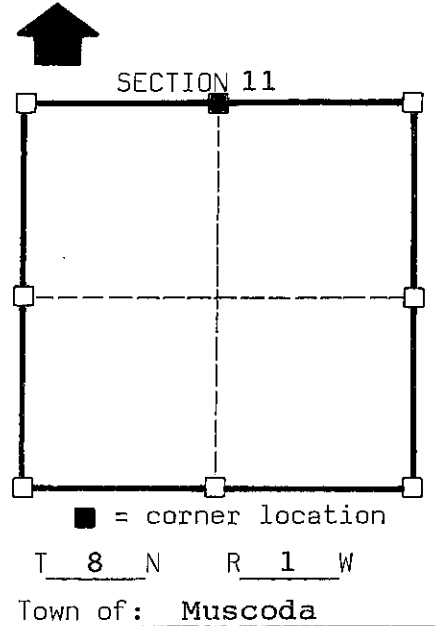
JUL 26 1989

CERTIFICATE

I, Robert M. Lampman, do hereby certify that on the 23rd day of March 1989, I found (evidence)(no evidence) of the N 1/4 corner of Section 11, T8 N, R1 W, Fourth Principal Meridian, and I re-established said corner according to the Wisconsin Statutes as shown and described hereon.

Dated this 28th day of March 1989

Robert M. Lampman S-1296



History of original corner establishment:
Original survey by Sibley in 1833.

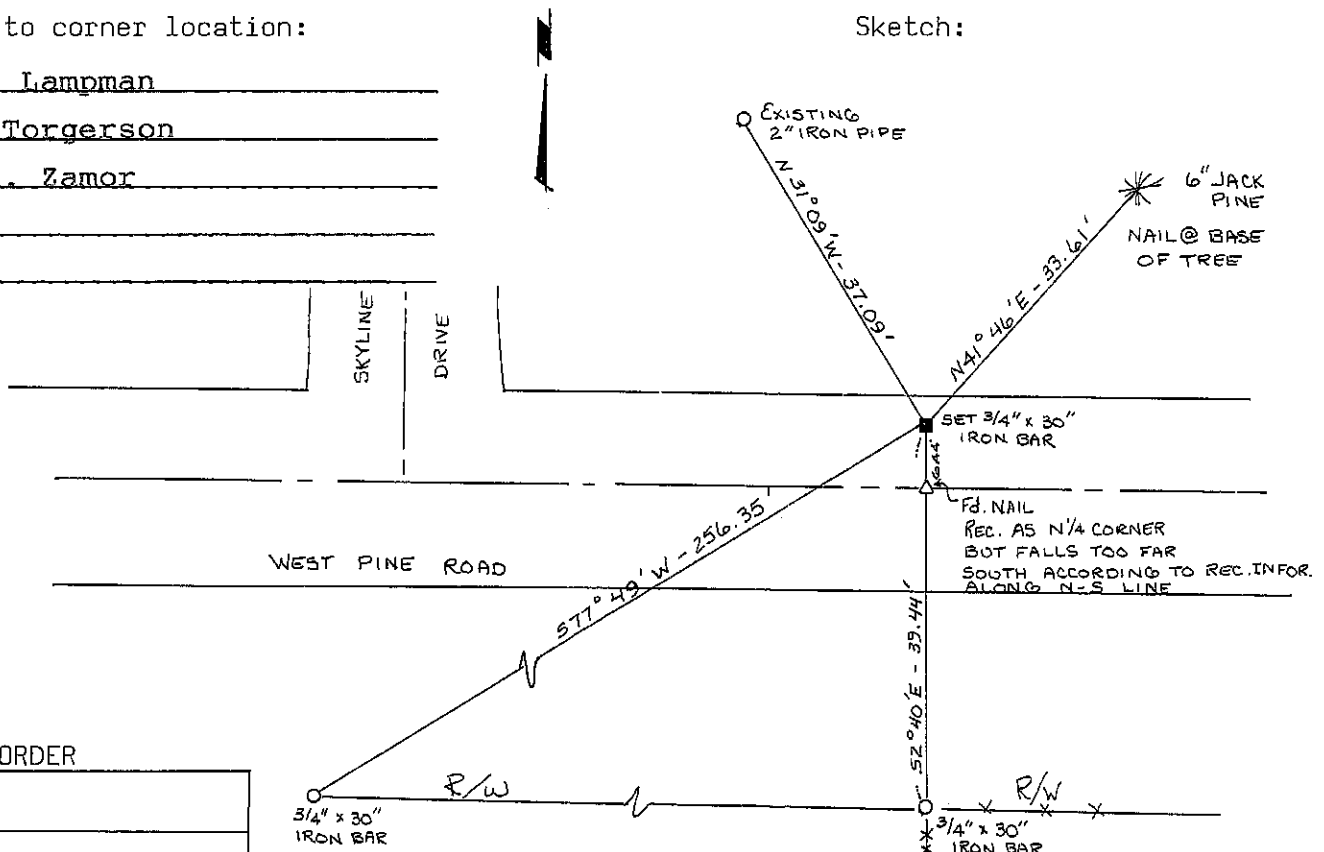
Description of corner evidence found:
Used existing monumentation along N-S 1/4 line together with recorded deeds to set North one-quarter corner.

Description of corner and witness monuments, references and accessories used to perpetuate the original or re-established location of this corner:

Witnesses to corner location:

Robert M. Lampman
Jerry L. Torgerson
Jessica A. Zamor

Sketch:



SURVEY CONTROL ORDER

Horizontal
Vertical

WISCONSIN COORDINATE SYSTEM

Corner	East(X)	North(Y)	Elevation(Z)	Zone
Control Sta. Name				