

RECEIVED

AUG 1 1989

RECORDED

AUG 1 1989

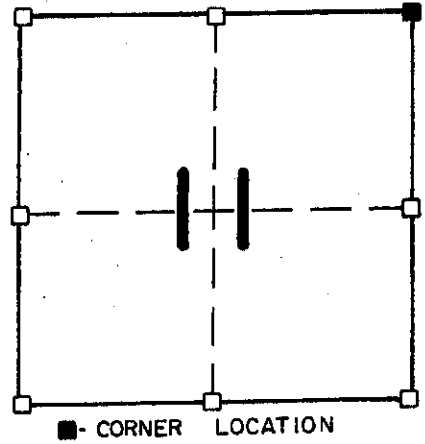
GRANT COUNTY GOVERNMENT CORNER RECORD

NE CORNER, SECTION 11, TOWNSHIP 8 NORTH, RANGE 1 W.
TOWN, CITY OR VILLAGE OF MUSCODA,
TYPE OF MONUMENT: RAILROAD SPIKE SET ELEVATION - M.S.L. DATUM _____
STATE PLANE COORDINATES: N _____
WISCONSIN SOUTH ZONE E _____

WITNESSES TO CORNER LOCATION

MATTHEW J. JANIAK
SEAN M. WALSH

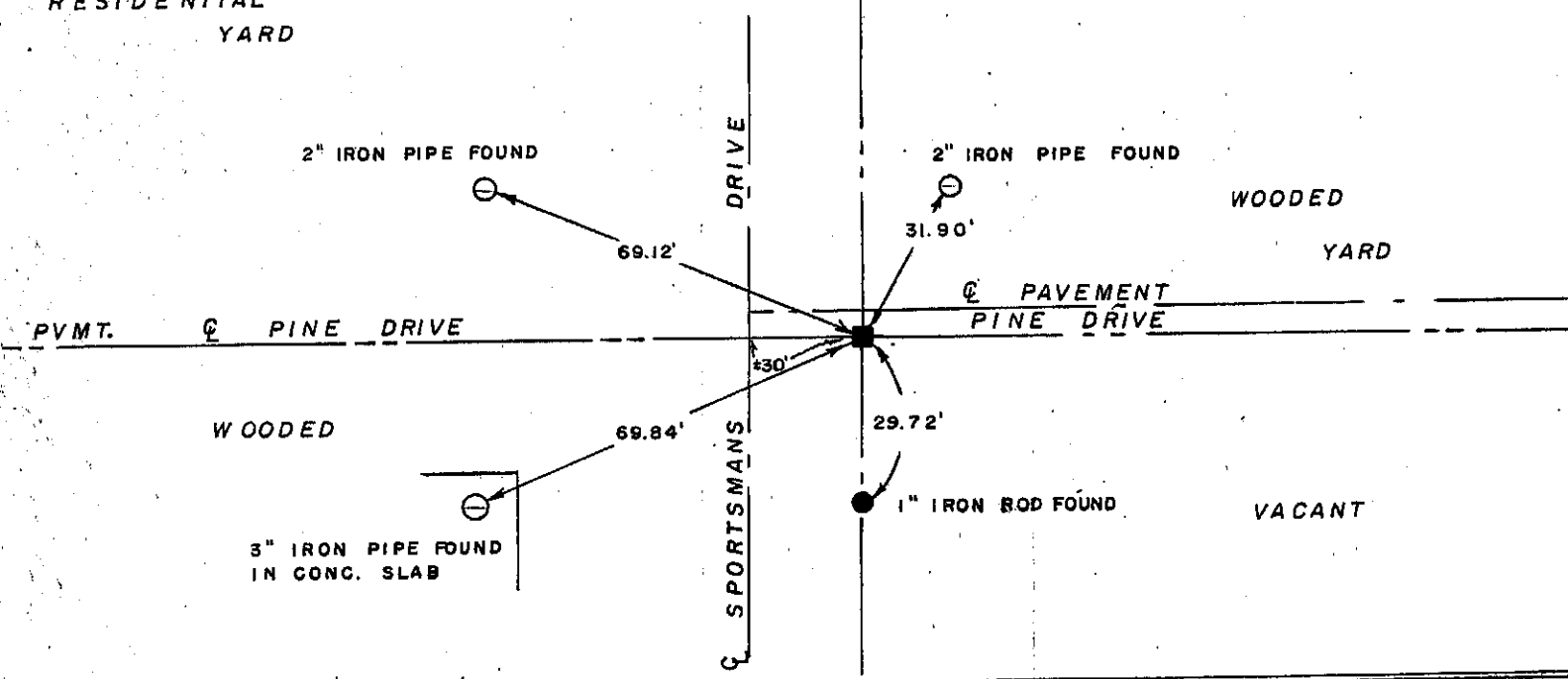
SECTION 11, T 8 N, R 1 E W
TOWN OF _____



NORTH

TIE SKETCH
(SHOW ALL HELPFUL FEATURES)

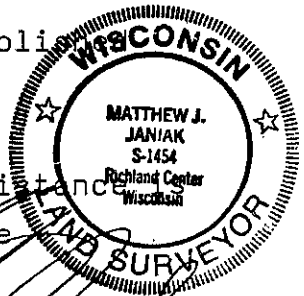
RESIDENTIAL
YARD



SURVEYOR'S CERTIFICATE
STATE OF WISCONSIN)
COUNTY) SS

SEAL S-1454

I, Matthew J. Janiak, DO HEREBY CERTIFY THAT I have re-established
the above corner on the West Line of the Original Plat of
Muscoda extended North to a point 867.84 feet North of the
Southwest Corner of Block 115 of the Original Plat. This distance
the last referenced information to the corner that could be
located.



DATED THIS 18th DAY OF May, 19 89

REGISTERED LAND SURVEYOR

CORNER CODE

(OVER)

23