

# GRANT COUNTY CERTIFIED LAND CORNER

CORNER NUMBER 22

**CERTIFICATE:**

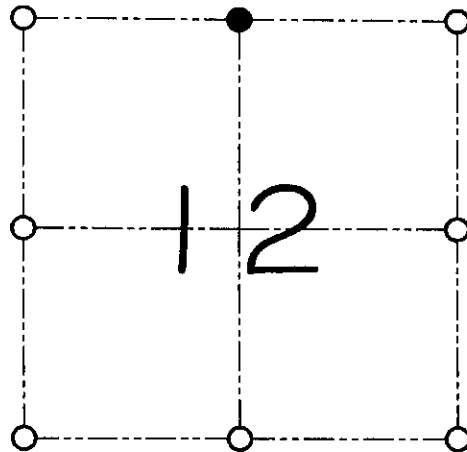
I, Larry L. Austin, do hereby certify that on the 21st day of February, 2000, I found evidence of the North 1/4 of Section 12, Town 8 North, Range 1 West, of the 4th Principal Meridian, and I re-established said corner according to the Wisconsin statutes as shown and described hereon.

Dated this 23rd day of June, 2000

*Larry L. Austin*  
Larry L. Austin S-1903



SEAL



● = CORNER LOCATION

NORTH 1/4 CORNER OF  
SECTION 12, T 8 N R 1 W  
TOWN OF MUSCODA

**HISTORY OF ORIGINAL CORNER ESTABLISHMENT:**

Corner was originally set in 1833 by Sibley.  
No other record of the corner was found.

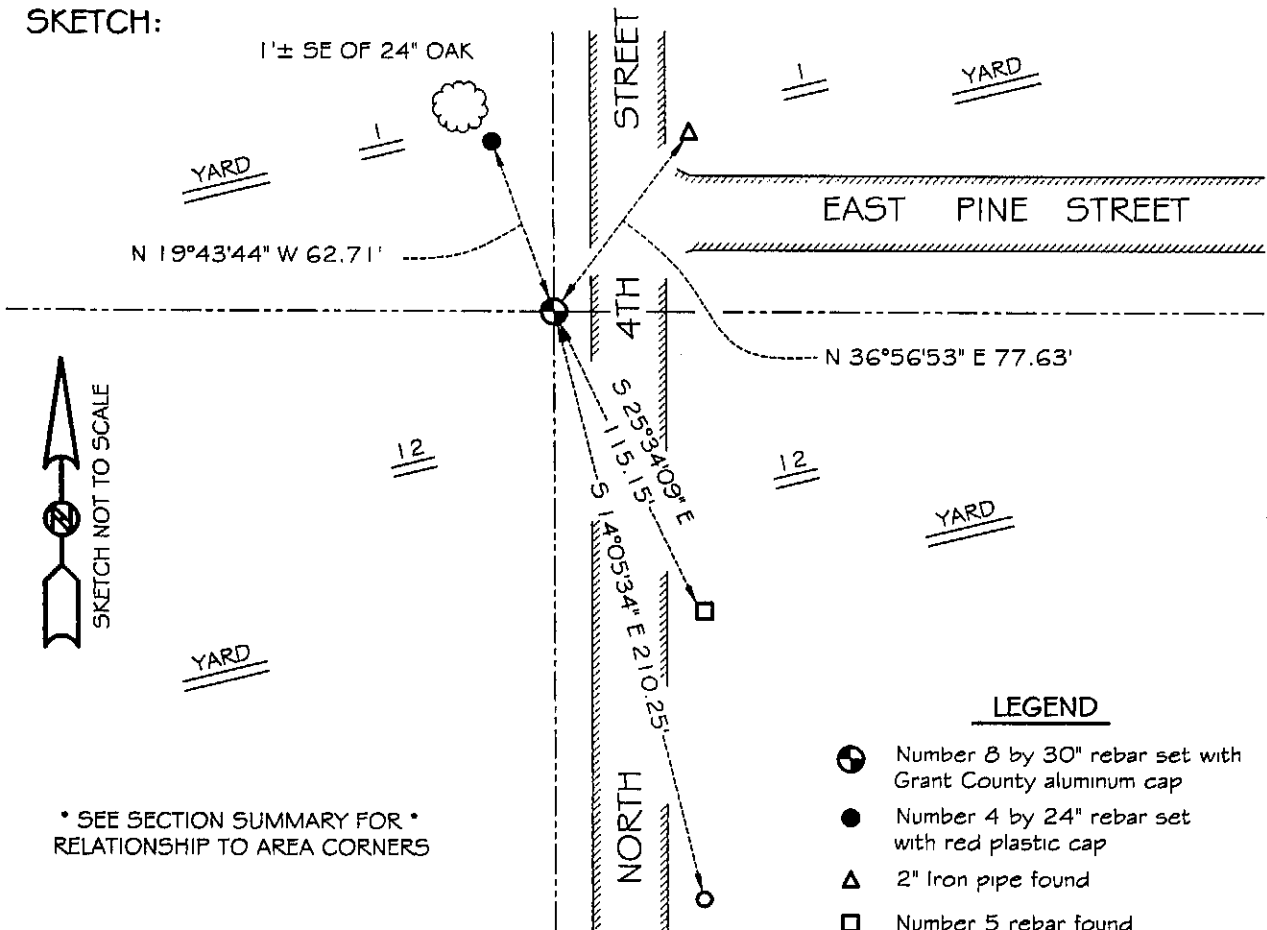
**DESCRIPTION OF CORNER EVIDENCE FOUND:**

I reset the corner based on measurements to the whole section  
and all area surveys. Verified this location using EDM & GPS methods.

**DESCRIPTION OF CORNER AND WITNESS MONUMENTS, references and accessories used to perpetuate the original or re-established location of this corner**

WITNESS TO THE CORNER LOCATION: SHELBY BLINDERT & SHAWN BEHREND

**SKETCH:**



\* SEE SECTION SUMMARY FOR \*  
RELATIONSHIP TO AREA CORNERS

LEGEND

- Number 8 by 30" rebar set with Grant County aluminum cap
- Number 4 by 24" rebar set with red plastic cap
- ▲ 2" Iron pipe found
- Number 5 rebar found
- Number 6 rebar found