

81027

U.S. PUBLIC LAND SURVEY MONUMENT RECORD GRANT COUNTY, WISCONSIN

in accordance with the Wisconsin Administrative Code, Chapter A-E 7.08 Requirements

(A) Identify the corner by reference to the U.S. Public Land Survey System.

SECTION 12 - TOWNSHIP 8 NORTH - RANGE 1 WEST

VILLAGE OF: MUSCODA

COORDINATES: WISCONSIN COUNTY COORDINATE SYSTEM - GRANT

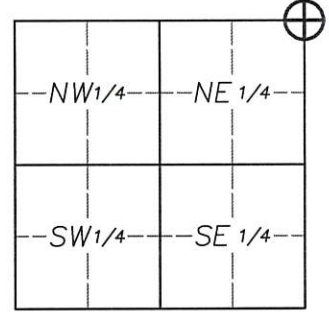
NORTHING: 648690.944

HORIZONTAL DATUM: NAD 83 (2011)

EASTING: 893882.559

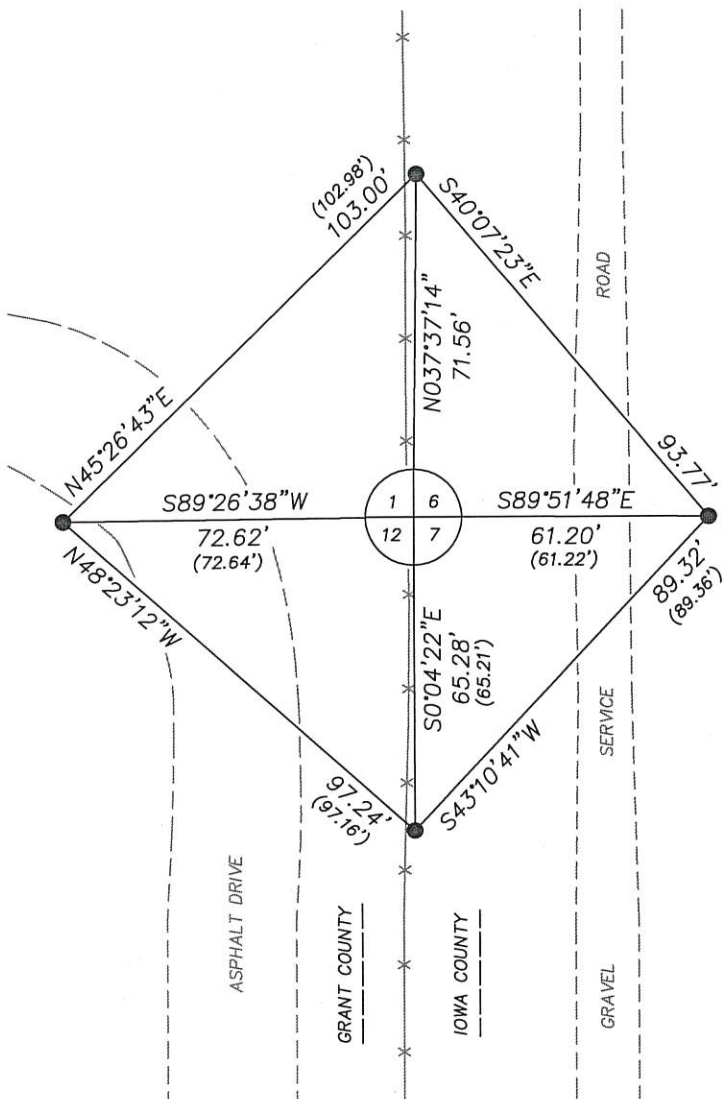
VERTICAL DATUM: NAVD 88

ELEVATION: 684.28'

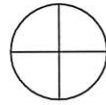


CORNER LOCATION:

Plan View Drawing:



LEGEND:



2" x 36" iron pipe with brass cap found, as was previously set by the Bureau of Land Management in 1948.



3/4" x 24" solid round iron rod found.



Existing fence line.

SCALE: 1" = 40'



January 14th, 2021

NOTE:

Bearings are referenced to the East line of the NE 1/4 of Section 12, which bears N0°48'33"E, according to the Grant County Coordinate System, as defined by the Wisconsin Department of Transportation and determined by GPS observation, 2011 Adjustment.