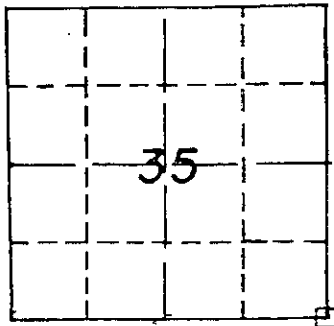


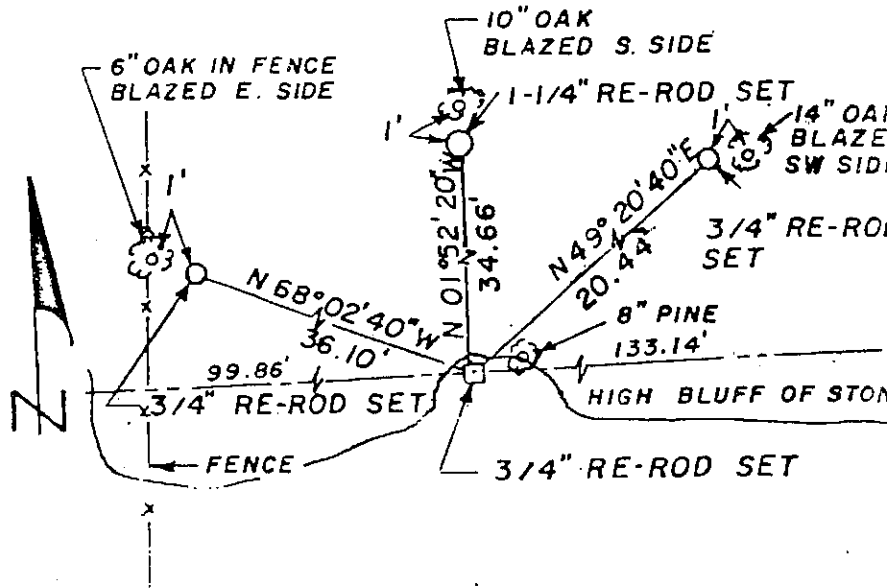
GOVERNMENT CORNER REFERENCE  
Grant County, Wisconsin

Government corner 35 | 36  
 Township 7 North  
 Range 5 West  
 Date of survey 11/20/77  
 Fieldbook \_\_\_\_\_



LOCATION SKETCH

This space for drawing of corner showing: type of Monument set, distance and direction to reference monument, a note if distances are not measured on a horizontal plane, and where measurement is taken on reference point.



BEARINGS ARE BASED ON MAGNETIC NORTH  
AS OBSERVED, 11/13/75

**SURVEYORS AFFIDAVIT** (Surveyor must certify the method by which the above described corner STATE OF WISCONSIN } ss has been located or relocated.)  
 COUNTY OF GRANT }

I hereby certify that the SE corner was re-established by running horizontal control throughout Sections 25, 26, 35 and 36, T7N, R5W and that said control contained the best available physical evidence and was correlated by computation with the original government survey notes to determine the position shown. I further certify that the original government survey ties to a "high bluff of stone" were used to determine the position of said corner and that a 3/4 inch solid round iron rod was set and referenced as shown and that said iron will be replaced by a State of Wisconsin cast aluminum magnetized monument at the convenience of the Department of Natural Resources.

*Harry M. Burdwell*  
 Registered Land Surveyor - Number S-516

CORNER NUMBER