

GRANT COUNTY CERTIFIED LAND CORNER

CORNER NUMBER 101

CERTIFICATE:

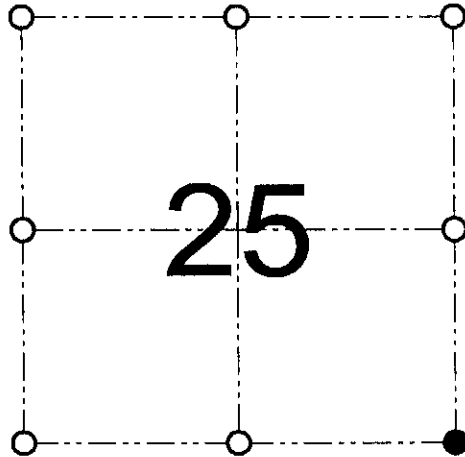
I, Larry L. Austin, do hereby certify that on the 22nd day of June, 2000, I found no evidence of the Southeast corner of Section 25, Town 7 North, Range 5 West, of the 4th Principal Meridian, and I re-established said corner according to the Wisconsin statutes as shown and described hereon.

Dated this 27th day of December, 2000

Larry L. Austin
Larry L. Austin S-1903



SEAL



● = CORNER LOCATION

SOUTHEAST CORNER OF
SECTION 25, T 7 N R 5 W
TOWN OF MILLVILLE

HISTORY OF ORIGINAL CORNER ESTABLISHMENT:

Corner was originally set in 1832 by Sibley.
No other record of the corner was found.

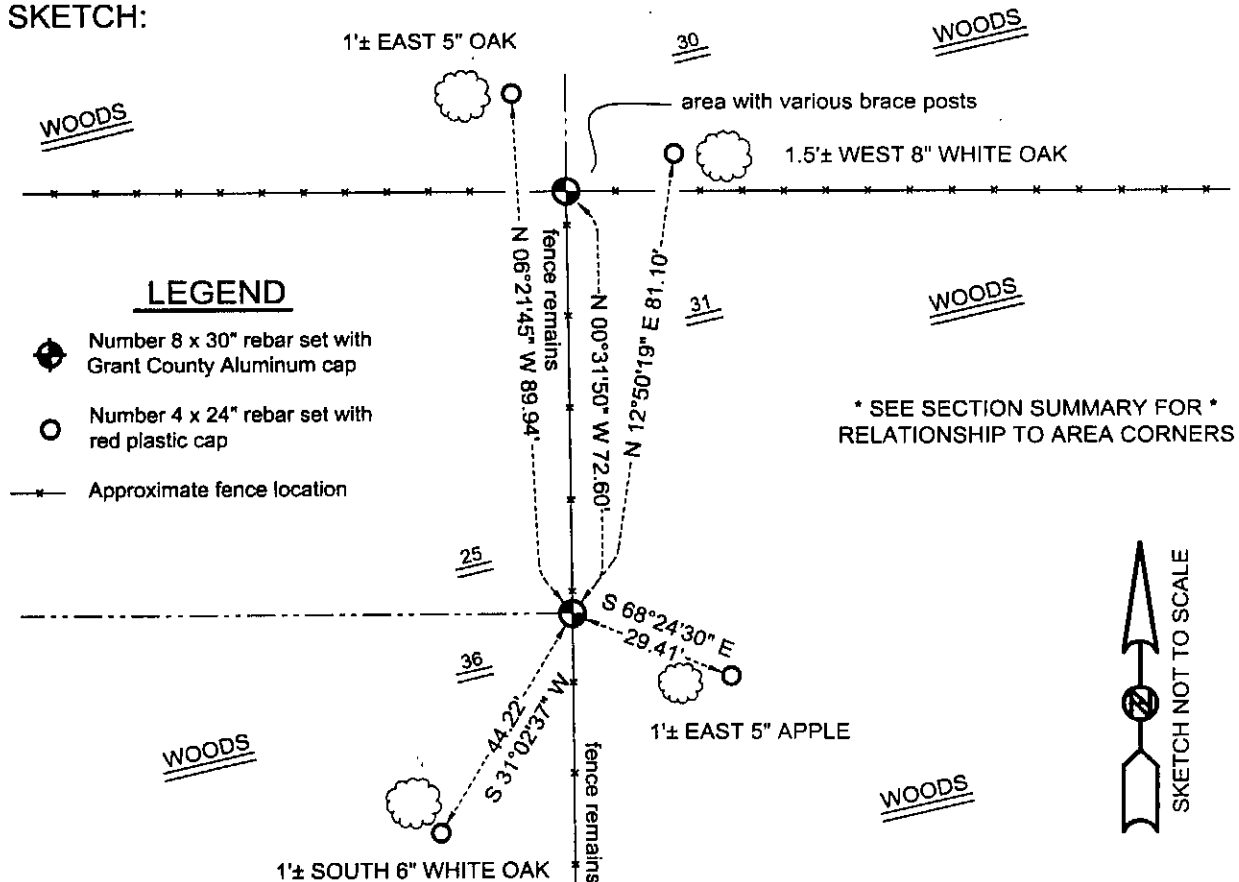
DESCRIPTION OF CORNER EVIDENCE FOUND:

I found an existing East-West fence with various brace posts all in one area at the occupied Southwest corner of Section 30, T7N R4W. I also found remains of fence to the South. I reset the corner at the recorded offset from the occupied Southwest corner of said Section 30. I verified this location using EDM & GPS methods.

DESCRIPTION OF CORNER AND WITNESS MONUMENTS, references and accessories used to perpetuate the original or re-established location of this corner

WITNESS TO THE CORNER LOCATION: SHANE AUSTIN & SHELBY BLINDERT & BOBBY SEDGWICK

SKETCH:



AUSTIN ENGINEERING, LLC
4211 HWY 81 E, LANCASTER, WI 53813
PHONE 608-723-6363 FAX 608-723-6702

FIELDBOOK: SDR33, 2006
G:\T7NR4W\32A
C:\SC14\SWA\TIE\T7NR5W\101

DRAWN BY: SW AUSTIN
APPROVED: LL AUSTIN
CREW: BS - SB - SA