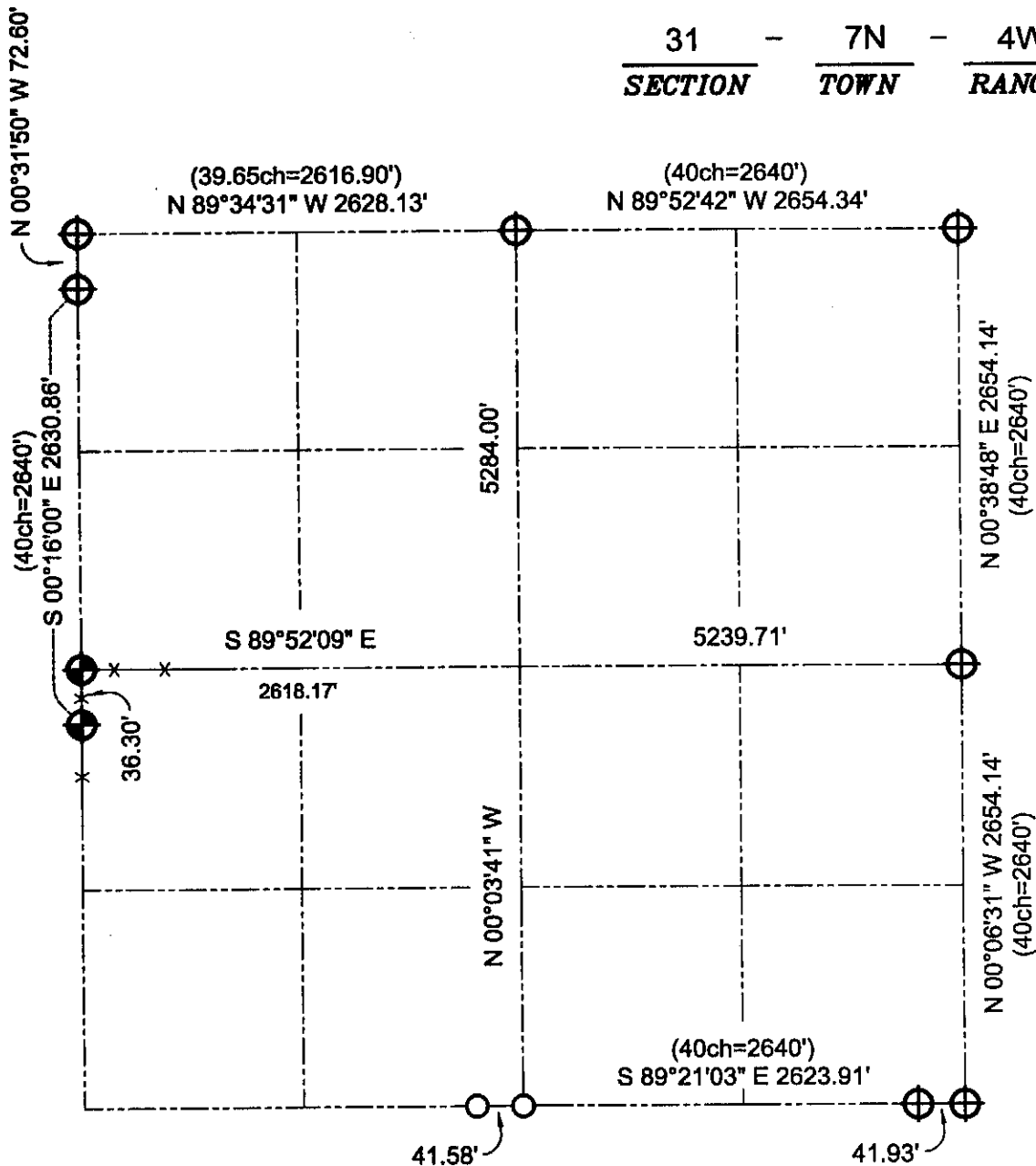


GRANT COUNTY SECTION SUMMARY

31
-
7N
-
4W
SECTION
TOWN
RANGE

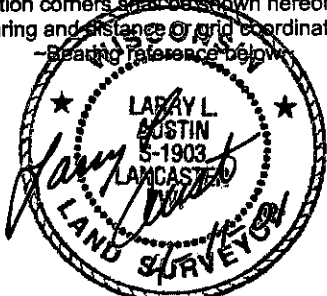


LEGEND

- Number 8 x 30" rebar set with Grant County Aluminum Cap
- Number 8 rebar found with Grant County Aluminum Cap
- Number 6 rebar found with Grant County Aluminum Cap
- Approximate fence
- Recorded as

NOTE

Relationships of all section corners to other section corners shall be shown hereon by bearing and distance or grid coordinates.



Bearings referenced to the North line of the Northwest Quarter of Section 31, which is assumed to bear N 89°34'31" W.