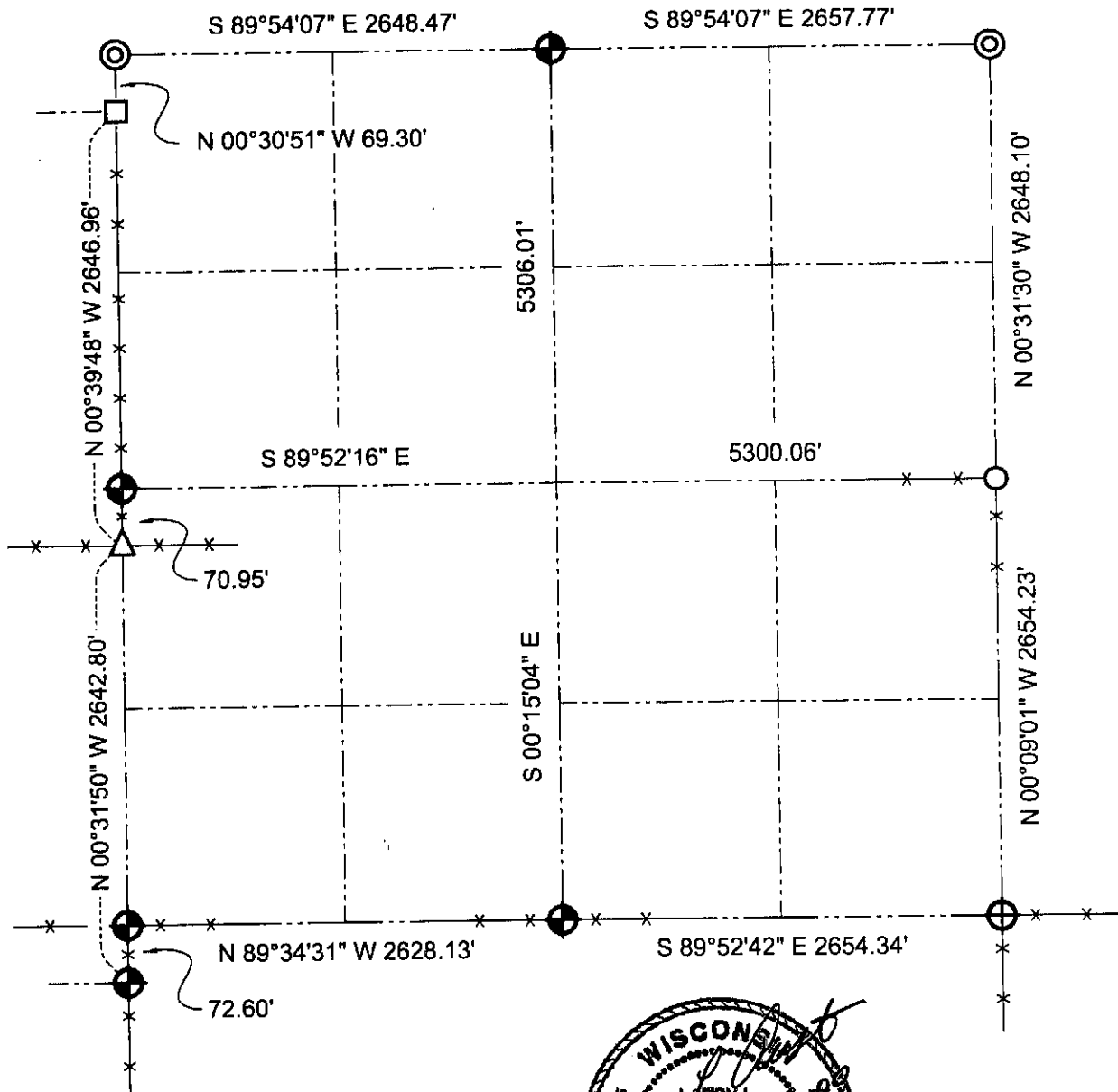


# GRANT COUNTY SECTION SUMMARY

30    -    7N    -    4W  
SECTION    TOWN    RANGE



### LEGEND

- Number 8 x 30" rebar set with Grant County Aluminum Cap
- Number 8 rebar found with Grant County Aluminum Cap
- Number 6 rebar found with Grant County Aluminum Cap
- Number 10 rebar found
- Cast Aluminum monument found
- 1" Iron pipe found



**NOTE:**  
Relationships of all section corners to other section corners shall be shown hereon by bearing and distance or grid coordinates.  
-Bearing reference below-



Bearings referenced to the South line of the SW Quarter of Section 30, which is assumed to bear N 89°34'31" W.

**AUSTIN ENGINEERING, LLC**  
4211 HWY 81 E, LANCASTER, WI 53813  
PHONE 608-723-6363 FAX 608-723-6702

FIELDBOOK: SDR33, 2006  
G:\T7NR4W\32A  
C:\SC14\SWA\TIE\T7NR4W\30SUM

DRAWN BY: SW AUSTIN  
APPROVED: LL AUSTIN  
CREW: BS - SB - SA